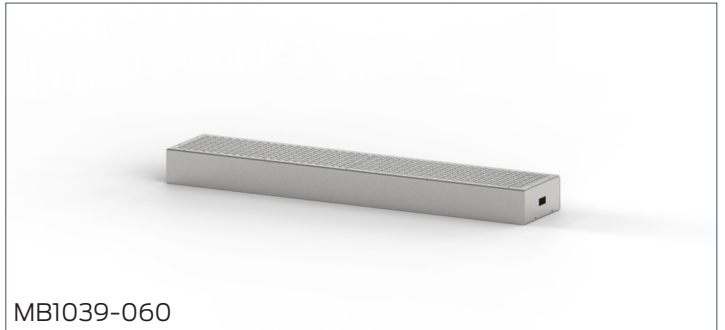


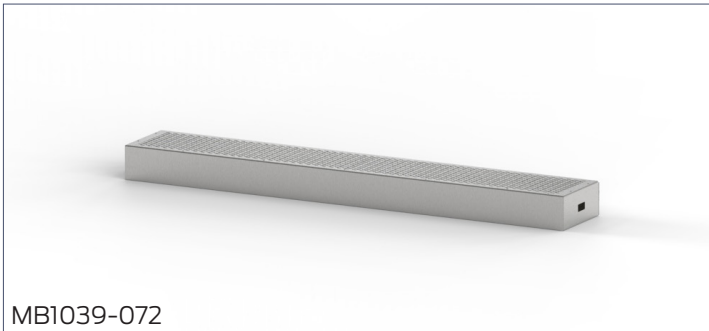
Maestro Recirculating Box



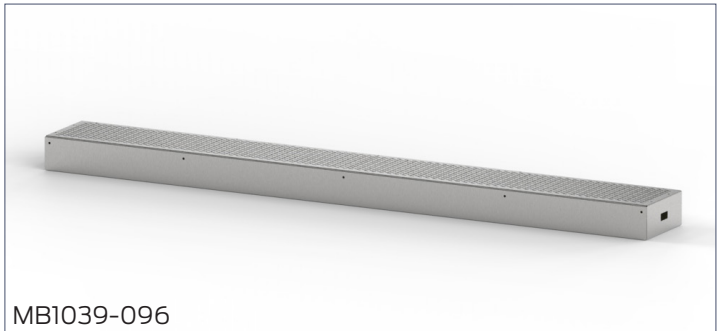
MB1039-048



MB1039-060



MB1039-072



MB1039-096

SPECIFICATIONS

Construction

- Exhaust air is recirculated through a potassium permanganate filtering system and then returned to the room through the top of the grossing station
- Designed as an alternative to the standard in-house ventilation system provided by the facility
- Includes variable speed blowers, wiring harness, and first set of filters (quantity dependent on unit size)

Materials

- 304 stainless steel construction with a polished No. 4 finish

Dimensions

- 10.3" D x 4.7" H
- MB1039-048: 41" L
- MB1039-060: 53" L
- MB1039-072: 65" L
- MB1039-096: 89" L

Compatibility

- Must be ordered at the time of purchase and installed during manufacturing of grossing station
- Compatible with potassium permanganate filters:
 - MB1039-048: BF052
 - MB1039-060: BF054
 - MB1039-072: BF056
 - MB1039-096: BF058

NOTE:

- Variable recirculating blowers operate between 65-82 decibels (dBA). Long-term noise exposure requires hearing protection.

Variations

Model No.	Description	Dimensions	Filters
MB1039-048	Recirculating Box, 48" Units	41" L x 10.3" D x 4.7" H	BF052
MB1039-060	Recirculating Box, 60" Units	53" L x 10.3" D x 4.7" H	BF054
MB1039-072	Recirculating Box, 72" Units	65" L x 10.3" D x 4.7" H	BF056
MB1039-096	Recirculating Box, 96" Units	89" L x 10.3" D x 4.7" H	BF058

MOPEC
GROUP

mopec
ELEVATING PATHOLOGY

MORTECH
MANUFACTURING

www.mopecgroup.com

800.362.8491

800 Tech Row, Madison Heights, MI