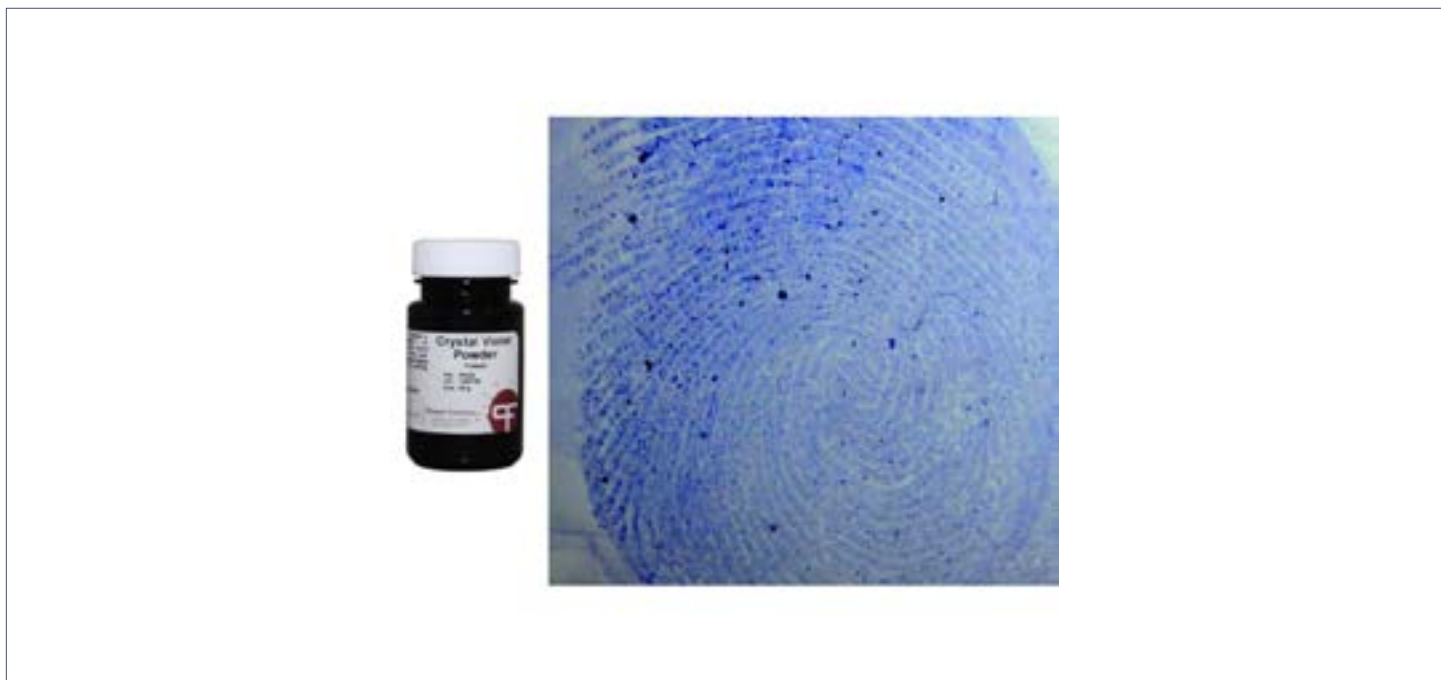


Crystal Violet Powder

A latent print development chemical used for processing fingerprints on the adhesive side of tape.



SPECIFICATIONS

Performance

- Develops latent prints on adhesive surfaces
- Used for sticky-side tape processing
- Creates working solution when mixed with water

Capacity

- 25 g

MOPEC
GROUP

mopec
ELEVATING TECHNOLOGY

MORTECH
MANUFACTURING

www.mopecgroup.com

800.362.8491

800 Tech Row, Madison Heights, MI