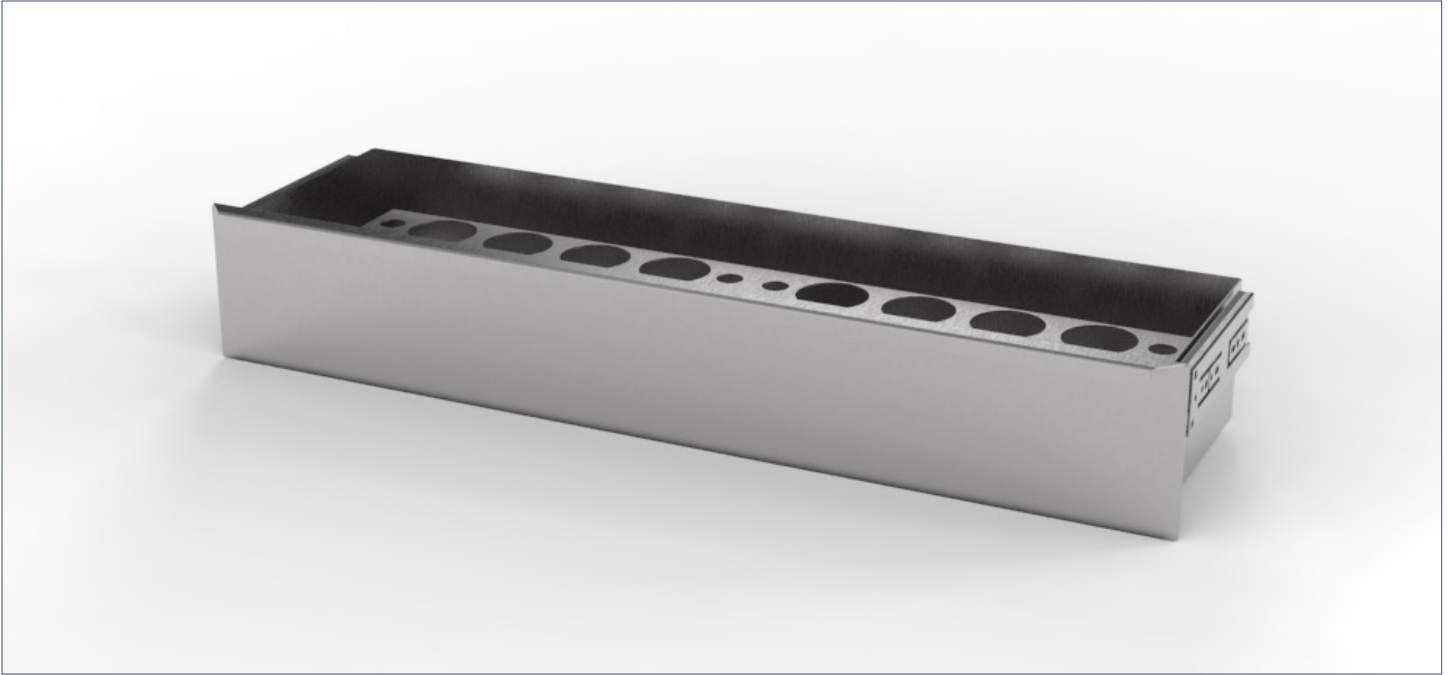


# Ensemble Large Drawer with Dye Holders



## SPECIFICATIONS

### Construction

- Provides storage for instruments, supplies, and other consumable items to keep your workspace clutter-free
- Includes (2) AX004 Marking Dye Holders to hold up to 18 large dye bottles less than 2" in diameter

### Materials

- 304 stainless steel construction with a polished No. 4 finish

### Dimensions

- Overall: 28.3" L x 8.1" D x 4.7" H
- Usable area: 26.9" W 7.3" D x 4" H

### Capacity

- 20 lbs

### Compatibility

- 48" units: can fit 1 large drawer
- 60" units: can fit 1 large drawer
- 72" units: can fit 1 large drawer
- 96" units: can fit 2 large drawers

## NOTE:

- This item must be ordered at the time of purchase to be properly installed during manufacturing of the grossing station.

Unit Size	Small Drawers Capability	Large Drawers Capability
48"	1 total (AX096 <b>or</b> AX097)	1 total (AX098 <b>or</b> AX099)
60"	2 total (AX096 <b>and/or</b> AX097)	1 total (AX098 <b>or</b> AX099)
72"	2 total (AX096 <b>and/or</b> AX097)	1 total (AX098 <b>or</b> AX099)
96"	2 total (AX096 <b>and/or</b> AX097)	2 total (AX098 <b>and/or</b> AX099)

**MOPEC**  
GROUP

**mopec**  
ELEVATING PATHOLOGY

**MORTECH**  
MANUFACTURING

[www.mopecgroup.com](http://www.mopecgroup.com)

800.362.8491

800 Tech Row, Madison Heights, MI