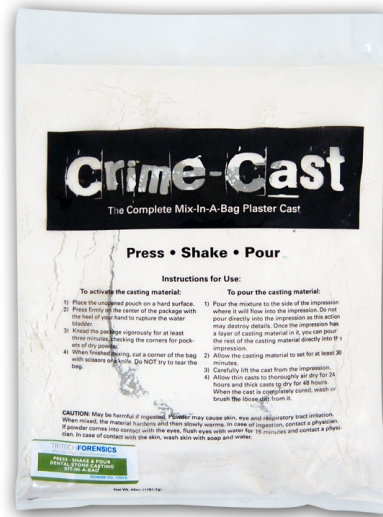


# Press, Shake, & Pour Casting Kit-In-A-Bag

The Casting Kit-In-A-Bag is a self-contained system for making tire and footprint casts without measuring or mixing. It includes a water bladder and casting material inside a sealed bag that is activated by breaking the bladder and shaking before pouring.



FS391

## SPECIFICATIONS

### Construction

- Water bladder and casting material in sealed bag

### Materials

- Polyethylene bag

### Dimensions

- 9" W X 11" H
- 6 mil thick outer bag

### Performance

- Place the bag on a flat surface, press down on the bag to break the internal water bladder, shake bag to mix, then pour

**MOPEC**  
GROUP

**mopec**  
ELEVATING PATHOLOGY

**MORTECH**  
MANUFACTURING

[www.mopecgroup.com](http://www.mopecgroup.com)

800.362.8491

800 Tech Row, Madison Heights, MI