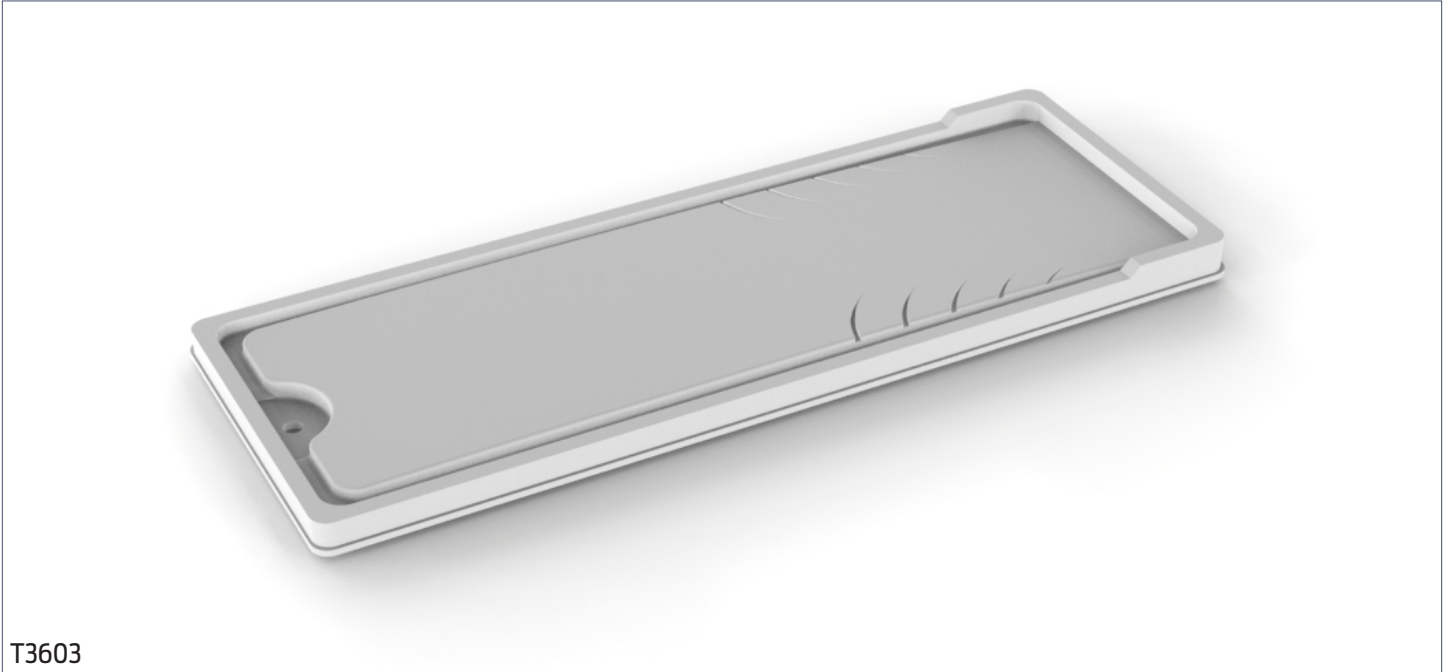


# Molded Plastic Carrier Chassis Tray

The Hi-Tech Molded Plastic Carrier Chassis Tray is shaped to fit the subframe of the carrier chassis. The detachable hi-tech plastic top is a real-time and energy saver, ensuring a secure fit with no mechanical fastening devices. The platform's top is fire retardant formed with ribs to promote drainage to the outer trough and drain hole. Perform X-rays without removing the cadaver from the autopsy table. A reinforced structure on the bottom enables easy mobility from rack to chassis through a cadaver lift.



T3603

## SPECIFICATIONS

### Construction

- Molded plastic top and tray chassis bonded together

### Materials

- High-Tech Molded Plastic

### Dimensions

- 82" L x 31" W x 1.5" H

### Capacity

- 500 lbs

### Compatibility

- IA32/IB32/ Racks
- JD405, JD450, JD451 but ONLY when paired with JD460 forks

**MOPEC**  
GROUP

**mopec**  
ELEVATING PATHOLOGY

**MORTECH**  
MANUFACTURING

[www.mopecgroup.com](http://www.mopecgroup.com)

800.362.8491

800 Tech Row, Madison Heights, MI