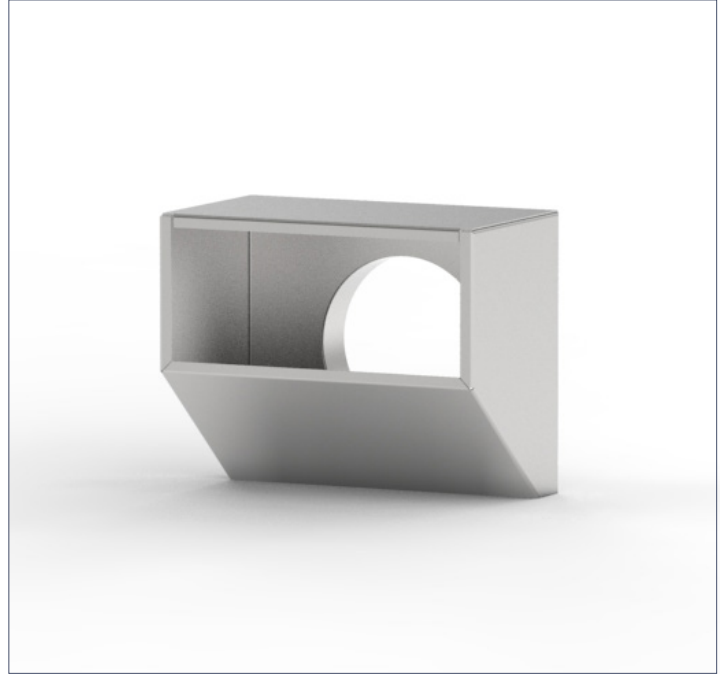
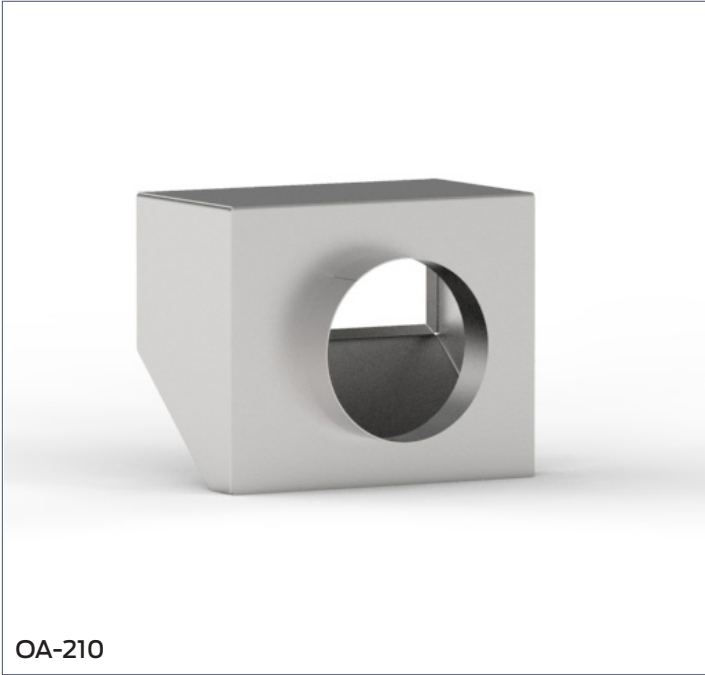


Duct Connection

Mopec's Sink Options & Accessories are designed to enhance the functionality, efficiency, and customization of Mopec autopsy sinks. These components provide users with flexible solutions to meet specific workflow needs, improve safety, and support specialized procedures.



SPECIFICATIONS

Construction

- This vent duct adapter goes on top of various pieces of equipment to go from the rectangular 10.125" x 4.25" connection to a 6" round duct stub connection

Materials

- Type 304 Stainless Steel with No. 4 finish

Dimensions

- 11" W x 9" D x 7.9" H

MOPEC
GROUP

Mopec
ELEVATING PATHOLOGY

MORTECH
MANUFACTURING

www.mopecgroup.com

800.362.8491

800 Tech Row, Madison Heights, MI