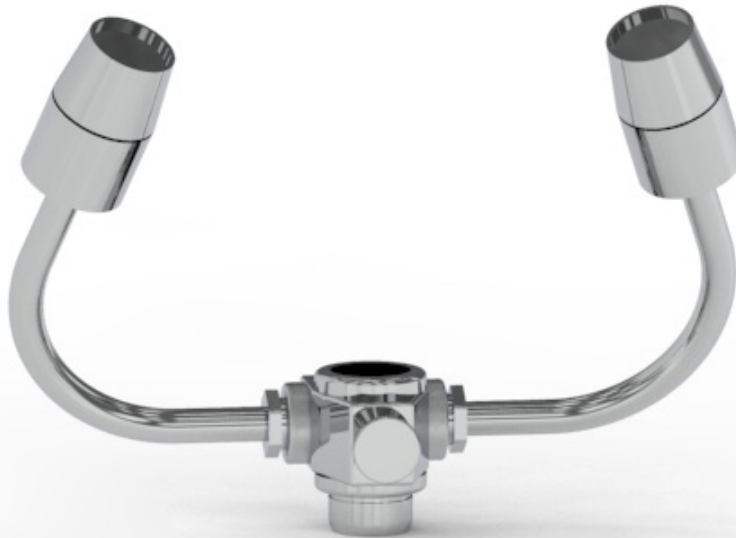


Eyewash Assembly, Faucet Style

Mopec's Sink Options & Accessories are designed to enhance the functionality, efficiency, and customization of Mopec autopsy sinks. These components provide users with flexible solutions to meet specific workflow needs, improve safety, and support specialized procedures.



OA-112

SPECIFICATIONS

Construction

- 3.2 gpm once activated
- Dual spray heads
- Turn lever clockwise to begin the flow of water: turn lever counterclockwise to stop the flow of water

Materials

- HDPE spray head

Dimensions

- 1 - 1/2" Spray head diameter
- 3/8" inlet pipe size

Utilities / Power

- 300 PSI maximum water pressure

MOPEC
GROUP

Mopec
ELEVATING PATHOLOGY

MORTECH
MANUFACTURING

www.mopecgroup.com

800.362.8491

800 Tech Row, Madison Heights, MI