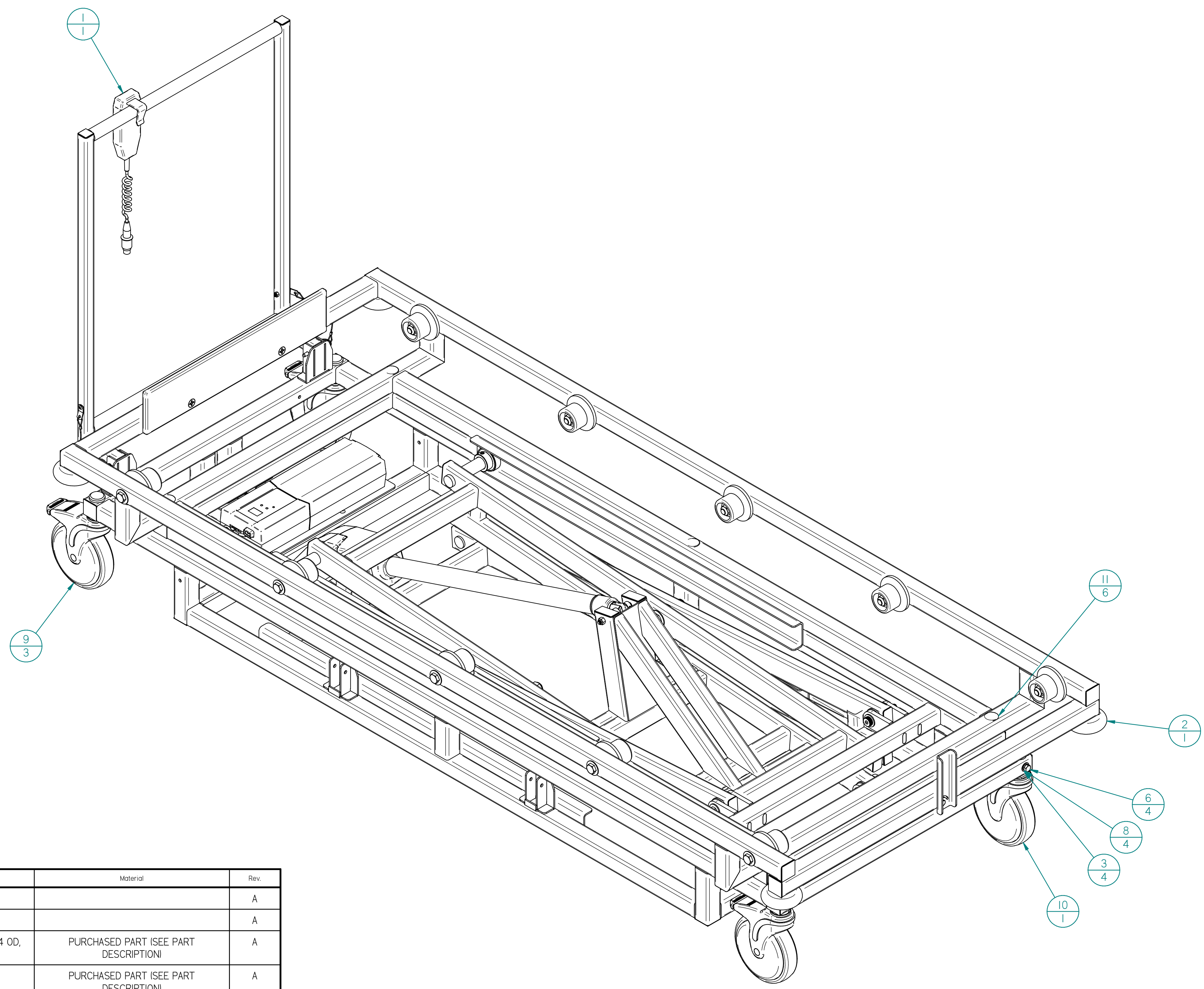


REV	DESCRIPTION	DATE	ECN #	APPR
A	INITIAL RELEASE	00-XXX-19	XXXXX	MM

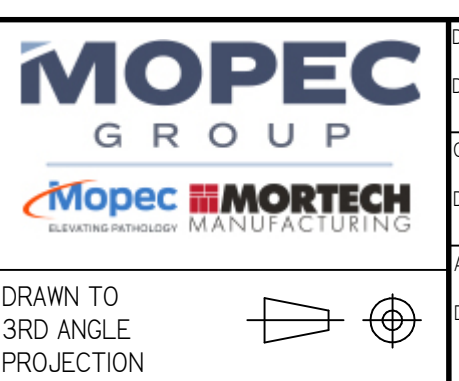


Item #	Qty.	File Name	Title	Material	Rev.
1	1	M690-712-Aasm	PORTABLE SCISSOR LIFT		A
2	1	M690E-31-701-Aasm	SUBFRAME, 31" END LOAD LIFT		A
3	4	PB0019.par	WASHER - SS, 5/16" FLAT, 11/32 ID x 3/4 OD, 0.50" TH	PURCHASED PART (SEE PART DESCRIPTION)	A
4	6	PB0091.par	WASHER - SS, 3/8" SCREW SIZE	PURCHASED PART (SEE PART DESCRIPTION)	A
5	6	PB0158.par	WASHER - SS, 3/8", SPLIT LOCK	PURCHASED PART (SEE PART DESCRIPTION)	A
6	4	PB0792.par	SCREW, METRIC CAP- M8 X 1.25 X 50 L SS	PURCHASED PART (SEE PART DESCRIPTION)	A
7	6	PB0812.par	SCREW, HEX HEAD CAP- .375-16 X 1" L, SS	PURCHASED PART (SEE PART DESCRIPTION)	A
8	4	PB0858.par	WASHER, LOCK- .312, SS	PURCHASED PART (SEE PART DESCRIPTION)	A
9	3	PD0094.par	CASTER, SWIVEL, 6" X 1" WITH 32MM STEM AND BRAKE, TOTAL LOCK	PURCHASED PART (SEE PART DESCRIPTION)	A
10	1	PD0095.par	CASTER, SWIVEL, 6" X 1" WITH 32MM STEM AND BRAKE, DIRECTIONAL LOCK	PURCHASED PART (SEE PART DESCRIPTION)	A
11	6	PM0193.par	PLUG, SNAP IN 1" ID NICKEL PLATED STEEL	PURCHASED PART (SEE PART DESCRIPTION)	A

MOPEC LEGAL NOTE
 THIS DOCUMENT CONTAINS PROPRIETARY INFORMATION OF MOPEC, AND MAY NOT BE COPIED IN WHOLE OR PART, AND NO USE SHALL BE MADE OF IT OTHER THAN FOR WHICH IT HAS BEEN SUBMITTED WITHOUT THE WRITTEN PERMISSION OF A MOPEC MANAGER
 MOPEC 2026

UNLESS OTHERWISE SPECIFIED ALL DIMENSIONS IN INCHES
 TOLERANCES
 0.00 ± 0.01 in
 0.000 ± 0.005 in
 0.0000 ± 0.010 in
 0.00000 ± 0.0010 in
 ANGLES ± 0.5°
 BREAK ALL CORNERS 0.063 X 45°
 ALL FILLET RADII R0.063 / 0.125 in
 INSPECT OVAL DIMENSIONS

MATERIAL

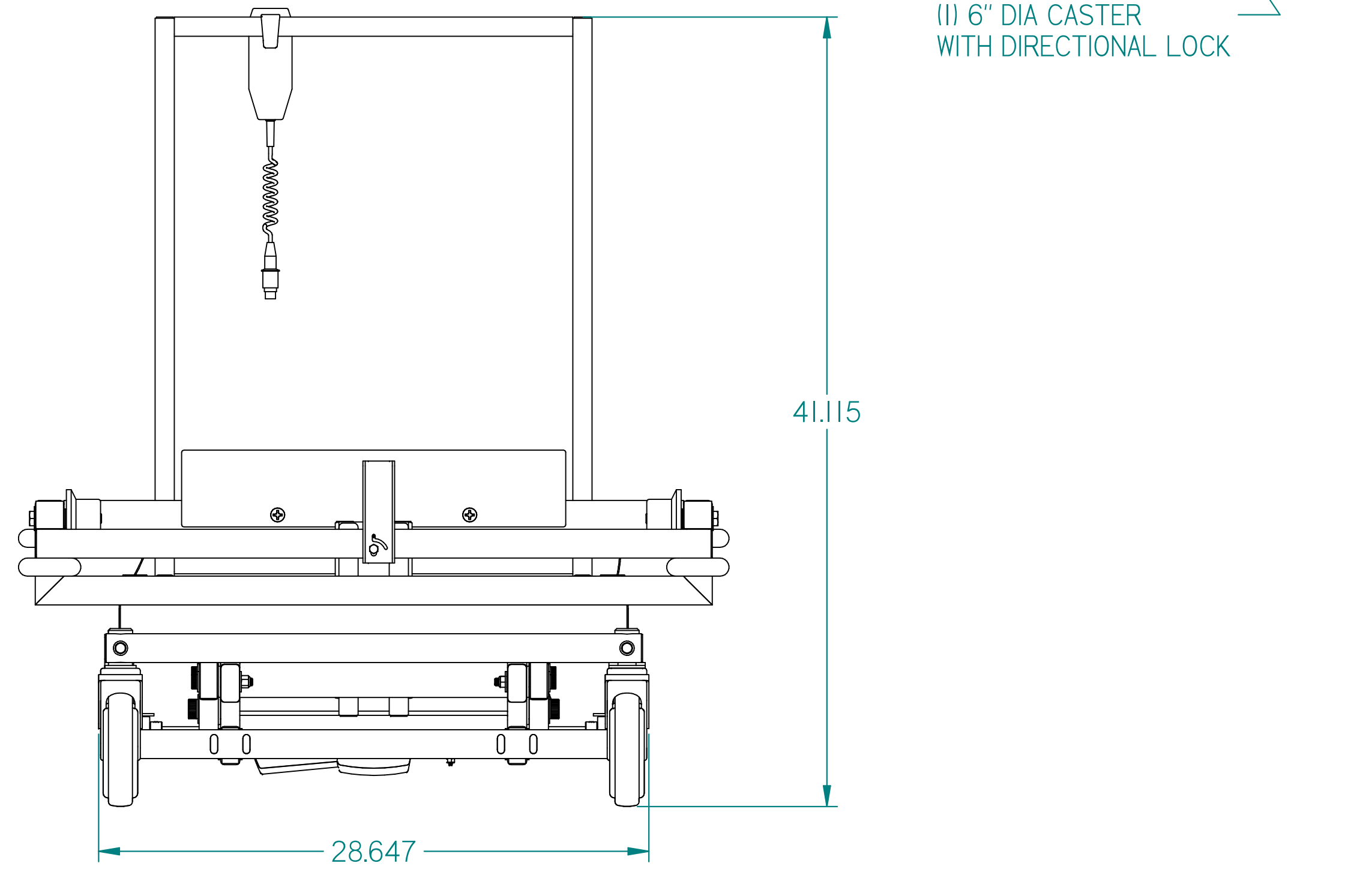
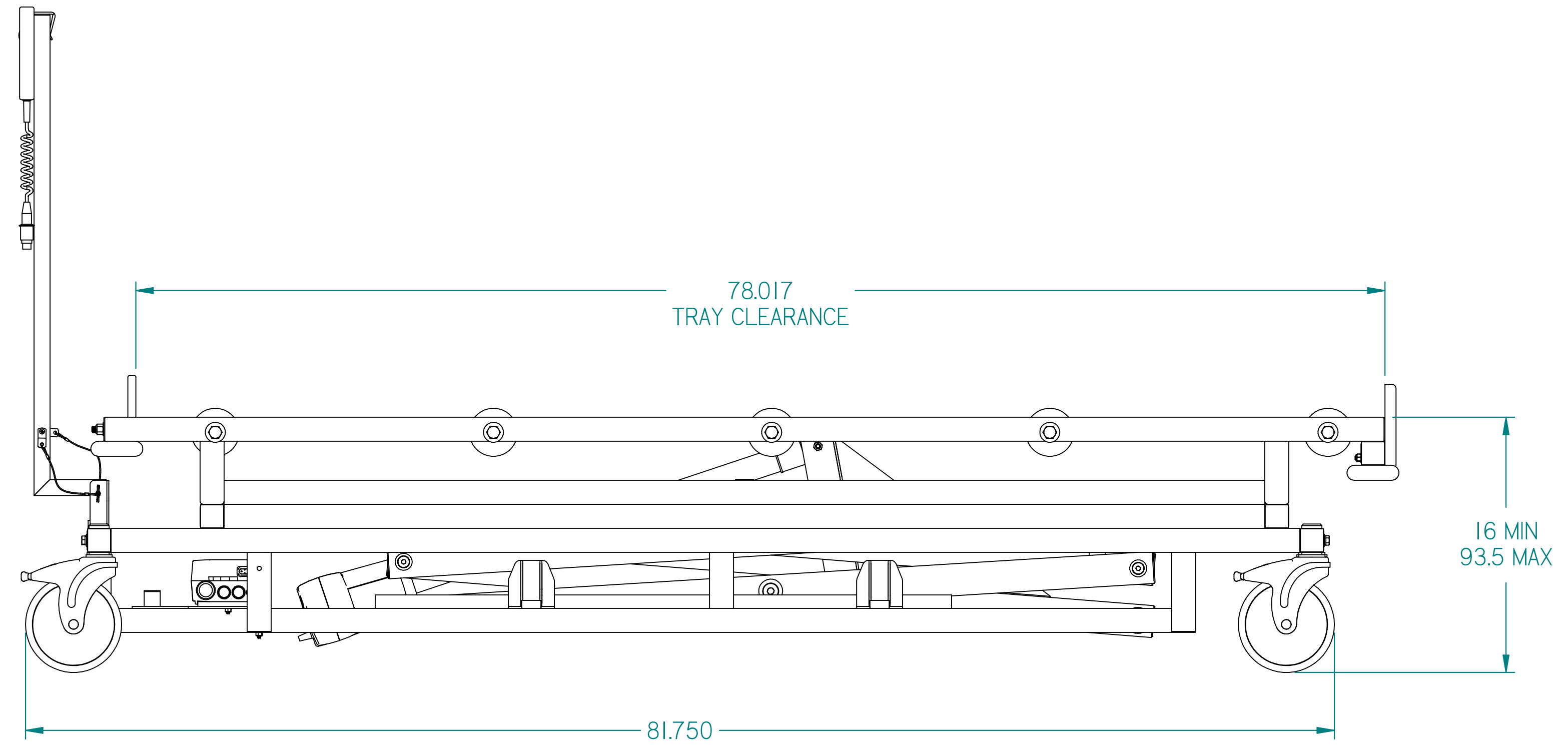
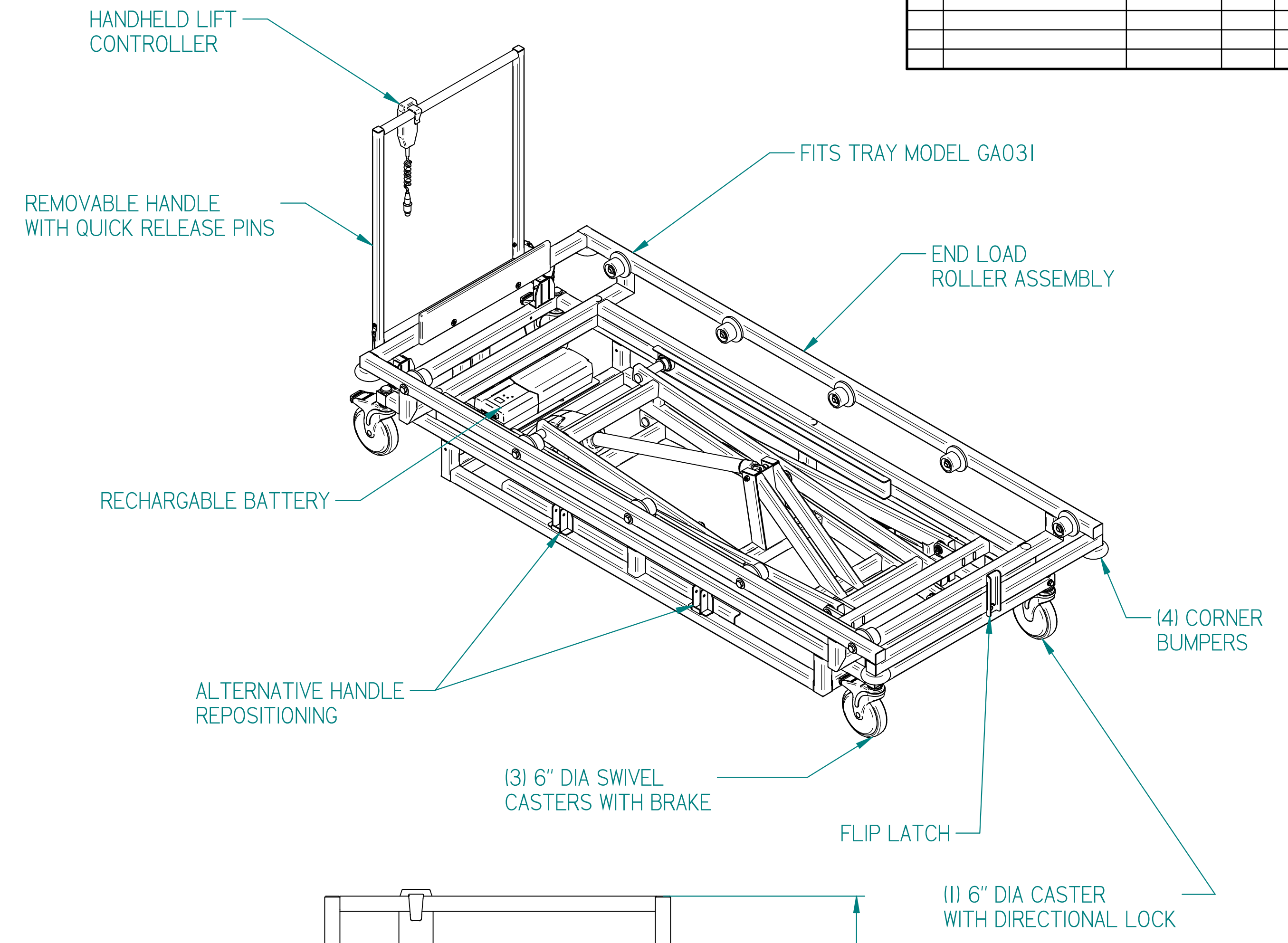
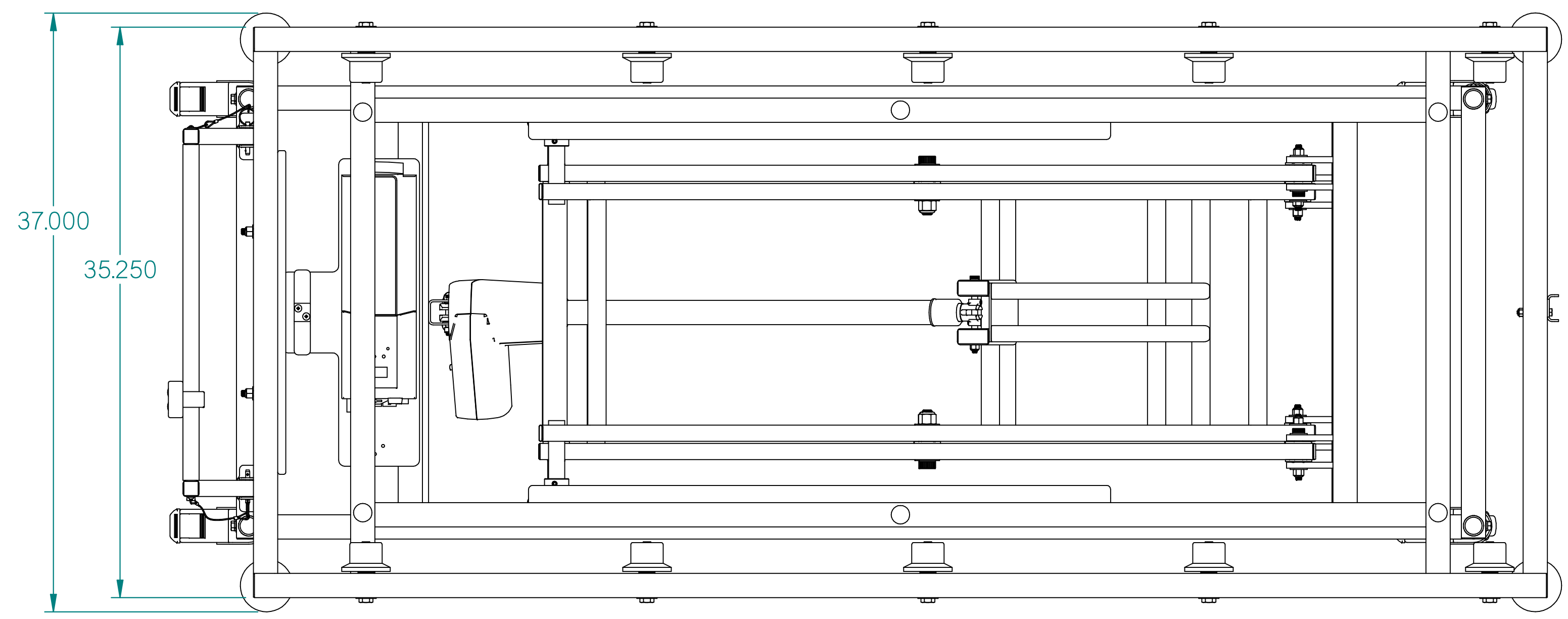


DRAWN BY: bdevins
 DATE: 4/28/2026
 CHECKED BY:
 DATE: 4/28/2026
 APPROVED BY:
 DATE: M.McCLAIN 4/28/2026

PART NUMBER: M690E-31-A
 DESCRIPTION: SCISSOR LIFT, END LOAD, 27" TRAY
 SIZE: A2
 FILE NAME: M690E-31-A.dft
 SCALE: 1:5
 DO NOT SCALE IF IN DOUBT ASK
 SHEET 1 OF 2

M690E-31-A.dft

REV	DESCRIPTION	DATE	ECN #	APPR
A	INITIAL RELEASE	00-XXX-19	XXXXX	MM



MOPEC LEGAL NOTE THIS DOCUMENT CONTAINS PROPRIETARY INFORMATION OF MOPEC, AND MAY NOT BE COPIED IN WHOLE OR PART, AND NO USE SHALL BE MADE OF IT OTHER THAN FOR WHICH IT HAS BEEN SUBMITTED WITHOUT THE WRITTEN PERMISSION OF A MOPEC MANAGER MOPEC 2026	UNLESS OTHERWISE SPECIFIED ALL DIMENSIONS IN INCHES TOLERANCES 0.0 ± 0.1 in 0.00 ± 0.05 in 0.000 ± 0.010 in 0.0000 ± 0.0010 in ANGLES ± 0.5° BREAK ALL CORNERS 0.063 X 45° ALL FILLET RADII R0.063 / 0.125 in INSPECT OVAL DIMENSIONS	MATERIAL 	 MOPEC GROUP MORTECH MANUFACTURING	DRAWN BY: bdevins DATE: 4/28/2026 CHECKED BY: --- DATE: 4/28/2026 APPROVED BY: M.McCLAIN DATE: 4/28/2026	PART NUMBER: M690E-31-A DESCRIPTION: SCISSOR LIFT, END LOAD, 27" TRAY SIZE: A2 FILE NAME: M690E-31-A.dft SCALE: 1:6 DO NOT SCALE IF IN DOUBT ASK	REV: A SHEET 2 OF 2
	DRAWN TO 3RD ANGLE PROJECTION 	DRAWN BY: M.McCLAIN DATE: 4/28/2026	SHEET 2 OF 2			

M690E-31-A.dft