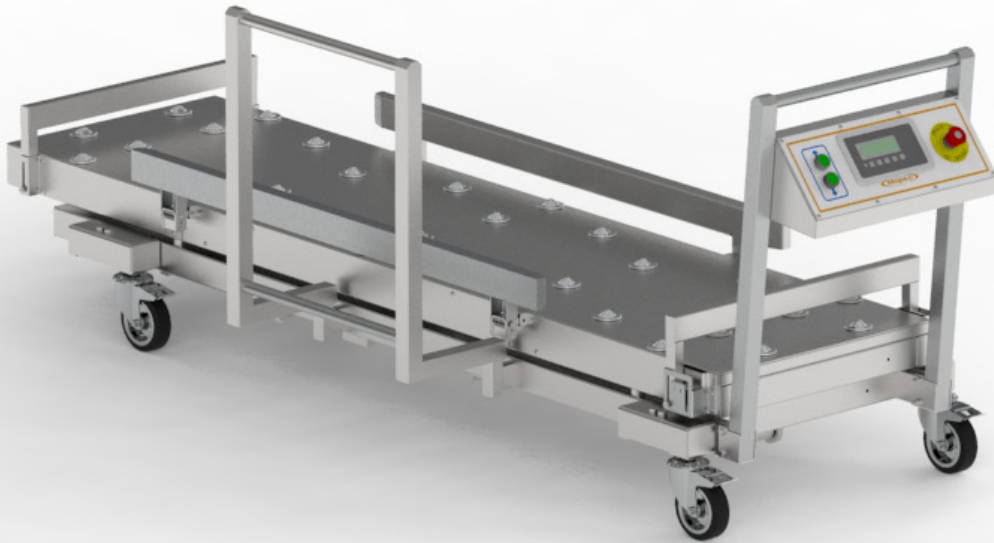


Cadaver Lift, End/Side Loading

Mopec's lifts are engineered to deliver effortless, smooth, and controlled lifting. Designed for safe maneuverability in mortuaries, laboratories, and medical facilities. These lifts enable operators to transport and elevate loads with precision and confidence.



JD5000

SPECIFICATIONS

Construction

- End and side-loading
- Fits 23" and 27" trays (sold separately)
- (4) tray stops
- (4) 5" Full-swivel casters with brakes
- Multi-directional transfer balls which allow for end and side loading
- Integrated lift controller with scale display

Materials

- 11GA 304 Stainless steel tubing, various gauges of stainless steel sheet metal
- Stainless steel transfer balls

Dimensions

- 95.2" L x 29.2" to 33.2" W (36.4" W including side handle) x 13.3" (minimum) – 76.7" (maximum) H

Capacity

- 375 lbs (tray weight limit)

Utilities / Power

- Battery-operated electromechanical, scissor lifting system
- 24V power system, (2 Rechargeable deep-cycle 12-volt batteries included) battery cord accepts any standard 120V/1hp/60V outlet

Compatibility

- JC Series 23" and 27" trays
- Note: Only compatible with Mopec JC trays, not compatible with Mortech Legacy trays

Note:

- Trays sold separately.

MOPEC
GROUP

mopec
ELEVATING PATHOLOGY

MORTECH
MANUFACTURING

www.mopecgroup.com

800.362.8491

800 Tech Row, Madison Heights, MI