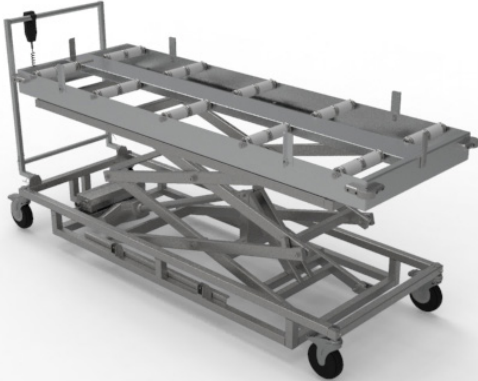
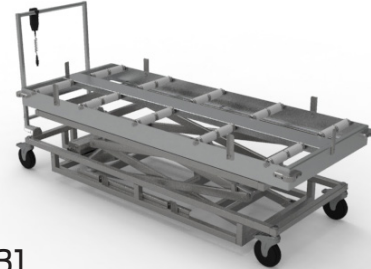


# Scissor Lift, End and Side Loading

The M690ES Scissor Lifts are a heavy-duty, electromechanical cadaver handling lift designed for mortuary, hospital, and pathology settings. It uses a powered scissor action system with an integral battery charger to eliminate manual lifting, safely raising and lowering body trays up to the height of storage racks. It accommodates body trays and reduces physical strain during transfer and storage tasks.



M690ES-23



M690ES-31



M690ES-27

## SPECIFICATIONS

### Construction

- End and side-loading
- Battery-operated electromechanical, scissor lifting system
- Integral battery charger and rechargeable battery
- (6) Flip-latches provided to secure loads and help prevent shifting
- (4) Full-swivel casters with brakes, (3) with brakes and (1) with directional lock
- Removable handle with quick release pins
- Multi-directional rollers which allow for end and side loading
- Plastic hand-held lift controller
- Fits 23", 27", or 31" trays (sold separately)

### Materials

- 11GA 304 Stainless steel tubing
- Various gages of stainless steel sheet metal
- (10) Nylon/PVC rollers

### Dimensions

- M690ES-23: 85.9" L x 28.5" W x 15.5" (minimum) – 93" (maximum) H
- M690ES-27: 85.9" L x 30" W x 15.5" (minimum) – 93" (maximum) H
- M690ES-31: 85.9" L x 34" W x 15.5" (minimum) – 93" (maximum) H

### Capacity

- 500 lbs

### Utilities / Power

- 24V power system, (2 Rechargeable deep-cycle 12-volt batteries included) battery cord accepts any standard 120V/1hp/60V outlet

### Compatibility

- M690ES-23: JC023 and JC023D trays
- M690ES-27: JC027 and JC027D trays
- M690ES-31: GA031 tray
- **Note:** Trays sold separately

## Variations

Model No.	Description	Dimensions
<b>M690ES-23</b>	Scissor Lift, End/Side Loading, 23" Trays	85.9"L x 28.5"W x 15.5" - 93"H
<b>M690ES-27</b>	Scissor Lift, End/Side Loading, 27" Trays	85.9"L x 30"W x 15.5" - 93"H
<b>M690ES-31</b>	Scissor Lift, End/Side Loading, 31" Trays	85.9"L x 34"W x 15.5" - 93"H

**MOPEC**  
GROUP

**mopec**  
ELEVATING PATHOLOGY

**MORTECH**  
MANUFACTURING

[www.mopecgroup.com](http://www.mopecgroup.com)

800.362.8491

800 Tech Row, Madison Heights, MI