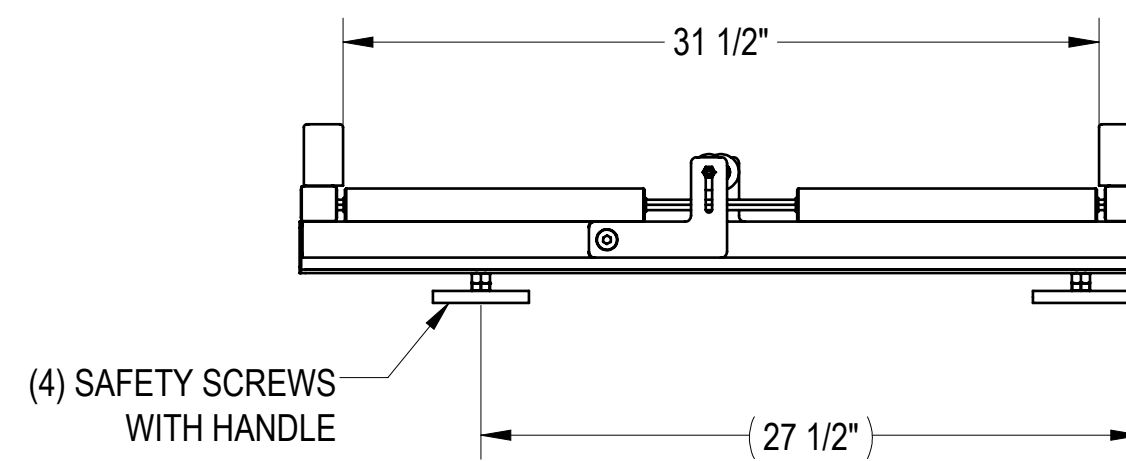
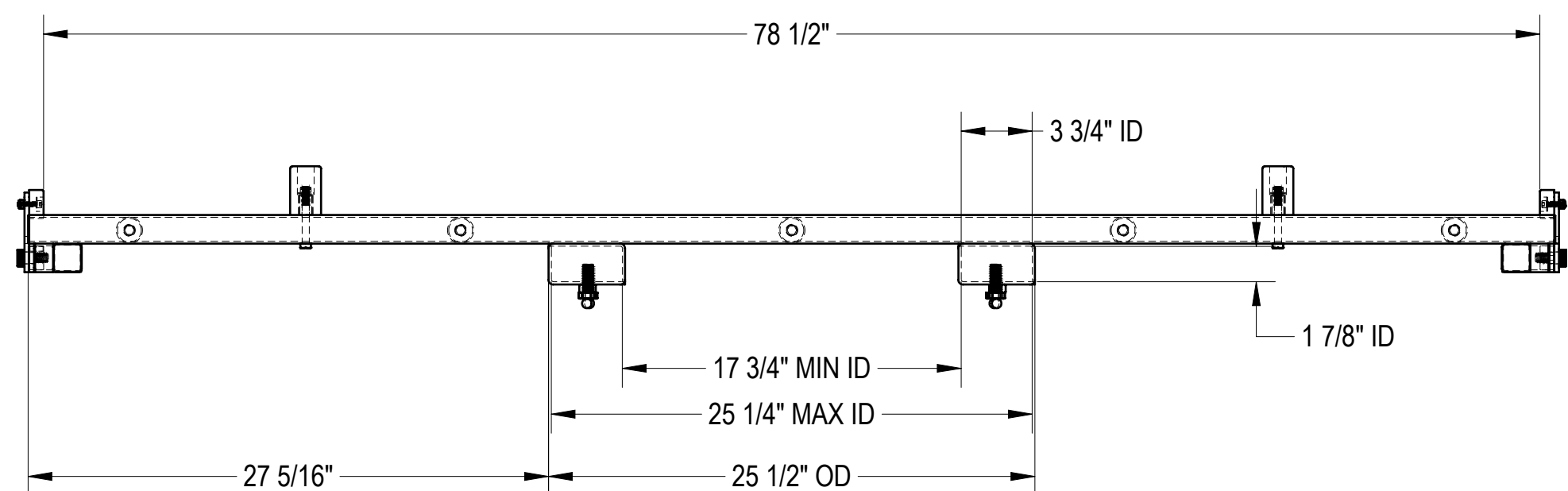
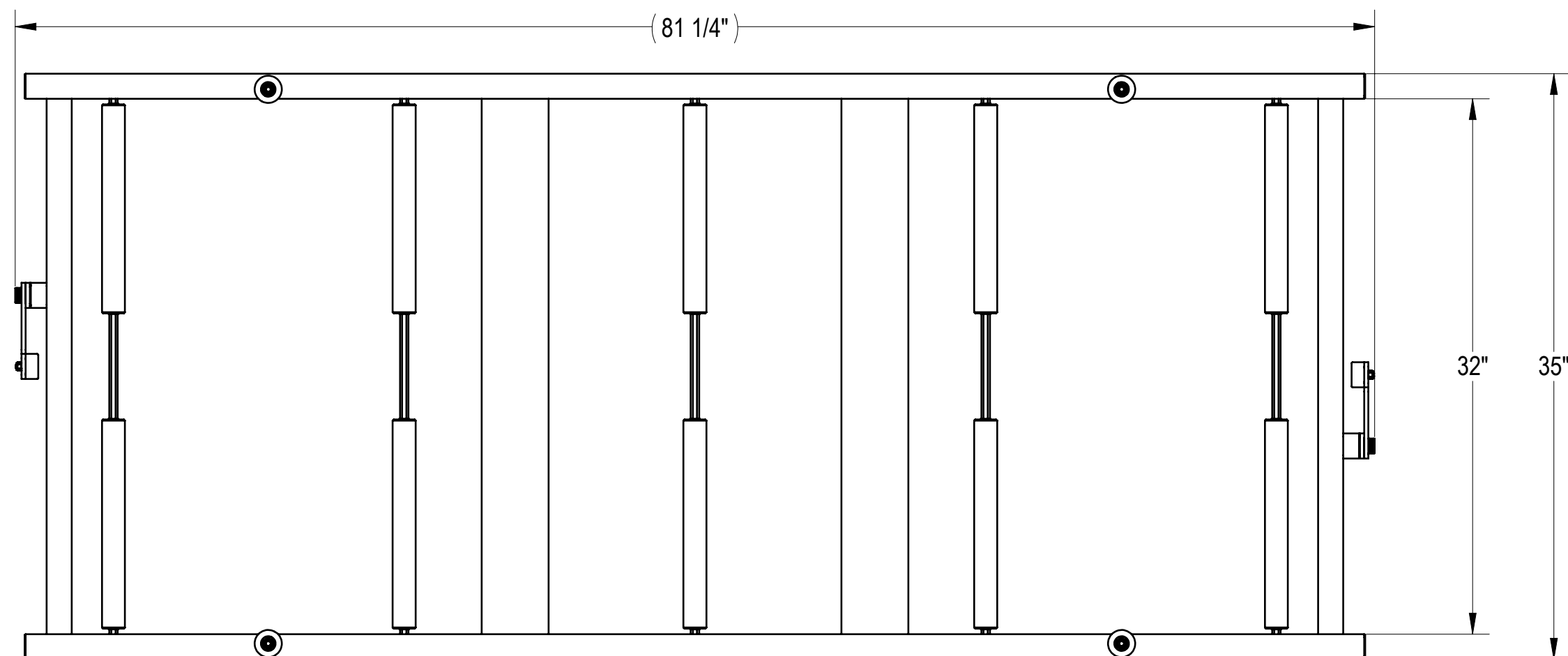
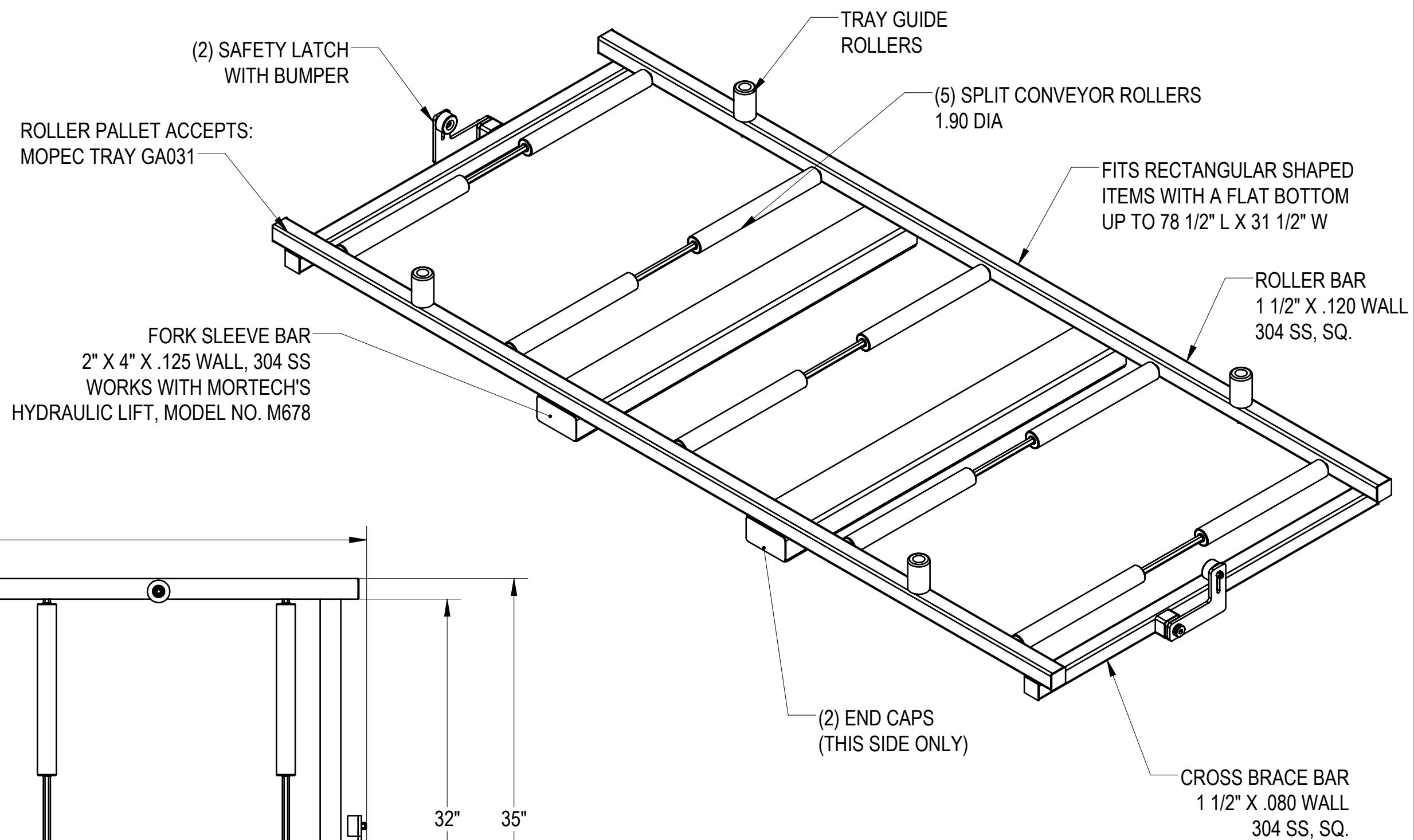


NOTES: UNLESS OTHERWISE SPECIFIED

1. APPLICABLE STANDARDS AND SPECIFICATIONS:
 ASMEY14.5-2009, DIMENSIONING AND TOLERANCING
 ASME Y14.5-2007, ABBREVIATIONS

REVISIONS				
REV.	DCN#	DESCRIPTION	DATE	CHANGED/APPROVED
X01	-	PRELIMINARY RELEASE	03/16/21	ES/



CUSTOMER CUSTOMER NAME		APPROVAL		PROPRIETARY THIS DOCUMENT AND THE DATE DISCLOSED HEREIN AND HEREWITH IS NOT TO BE REPRODUCED, USED, OR OTHERWISE DISCLOSED IN WHOLE OR IN PART TO ANYONE WITHOUT WRITTEN AUTHORIZATION FROM MORTECH MFG.			MOPEC GROUP MORTECH MANUFACTURING		411 North Aerojet Avenue Azusa, CA 91702 tel: (800) 410-0100 (626) 334-1471 fax: (626) 334-1704 www.motechmfg.com		
PROJECT PROJECT NAME		SIGNATURE		DATE		DO NOT SCALE DRAWING	APPROVALS	DATE	TITLE MODEL M601H-31 FULL ROLLER PALLET ASSEMBLY- 31", HYDRAULIC		
						MATERIAL 304 STAINLESS STEEL	CHECKED BY ELISEO S.	03/16/21	SIZE C	DWG NO. M601H-31AP	REV. X01
						FINISH GRAINED	APPROVED BY		SCALE 1:8	NEXT ASSY.	SHEET 1 OF 1