

REV	DESCRIPTION	DATE	ECN #	APPR
A	INITIAL RELEASE	00-XXX-19	XXXXX	MM

Item #	Qty.	File Name	Title	Material	Rev.
1	1	6494-B.asm	MIDDLE	JD5000 SERIES LIFT	B
2	1	6547-C.asm	JD SIDE HANDLE		C
3	1	662301-A.psm	FRONT GATE BRACKET - RH	SHT, SS, 14 GA, 304	A
4	1	662302-A.psm	FRONT GATE BRACKET - LH	SHT, SS, 14 GA, 304	A
5	1	6641-A.asm	32 TRAY	END LOAD ADJ. ROLLER PALLET	A

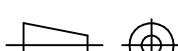
MOPEC LEGAL NOTE
THIS DOCUMENT CONTAINS
PROPRIETARY INFORMATION OF
MOPEC, AND MAY NOT BE COPIED IN WHOLE
OR PART, AND NO USE SHALL BE MADE OF
IT OTHER THAN FOR WHICH IT HAS BEEN
SUBMITTED WITHOUT THE WRITTEN
PERMISSION OF A MOPEC MANAGER
MOPEC 2026

UNLESS OTHERWISE SPECIFIED:
ALL DIMENSIONS IN INCHES
TOLERANCES
0.0 ± 0.1 in
0.00 ± 0.05 in
0.000 ± 0.010 in
0.0000 ± 0.0010 in
ANGLES ± 0.5°
BREAK ALL CORNERS 0.063 X 45°
ALL FILLET RADII R0.063 /0.125in
INSPECT OVAL DIMENSIONS

MATERIAL



DRAWN TO
3RD ANGLE
PROJECTION



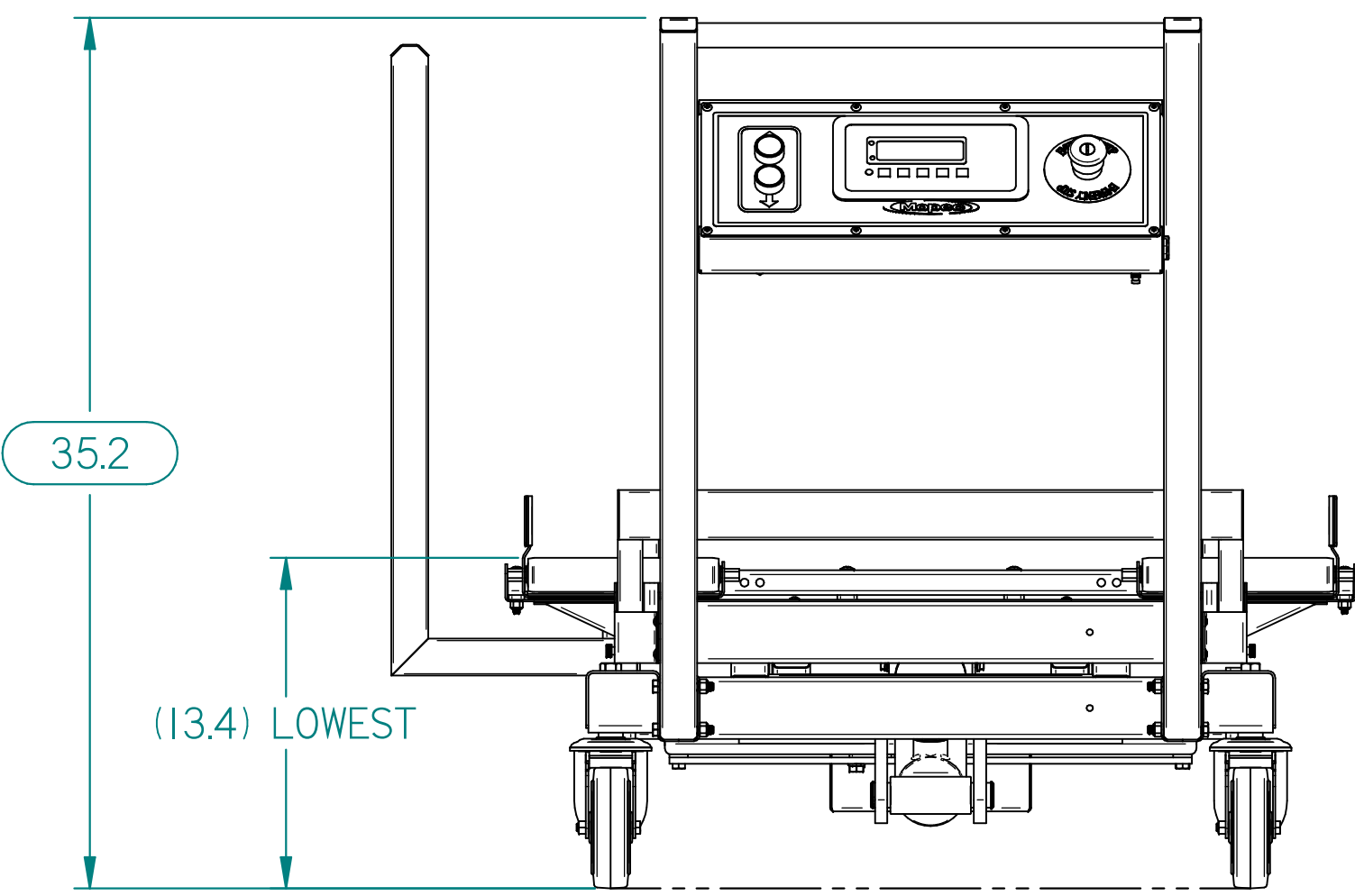
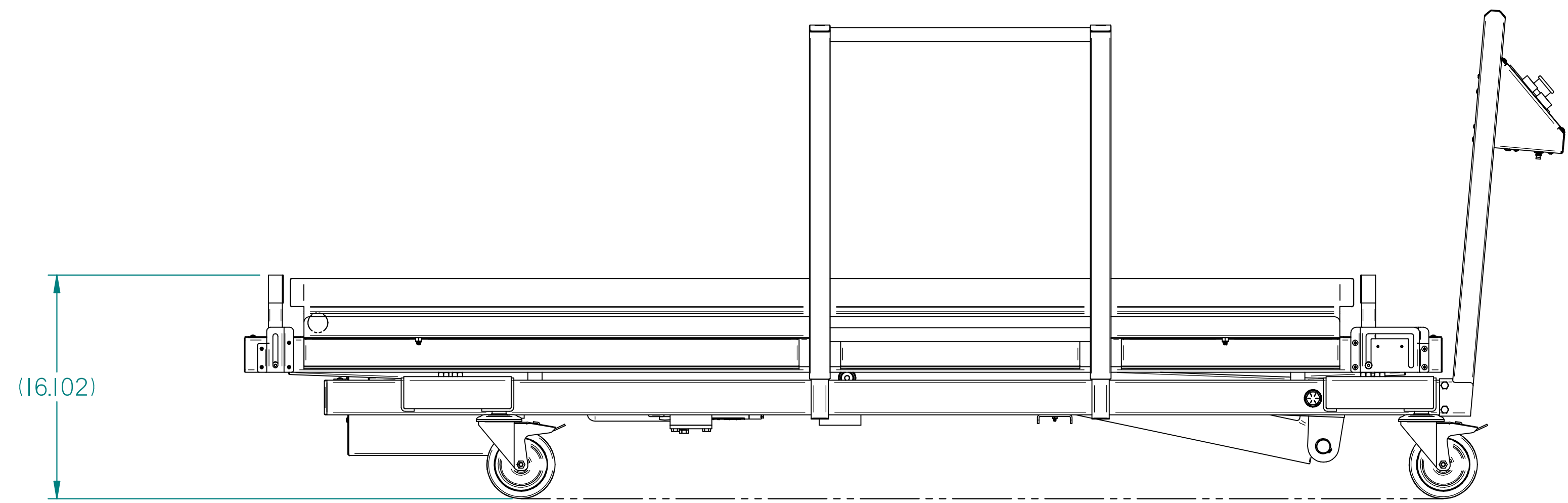
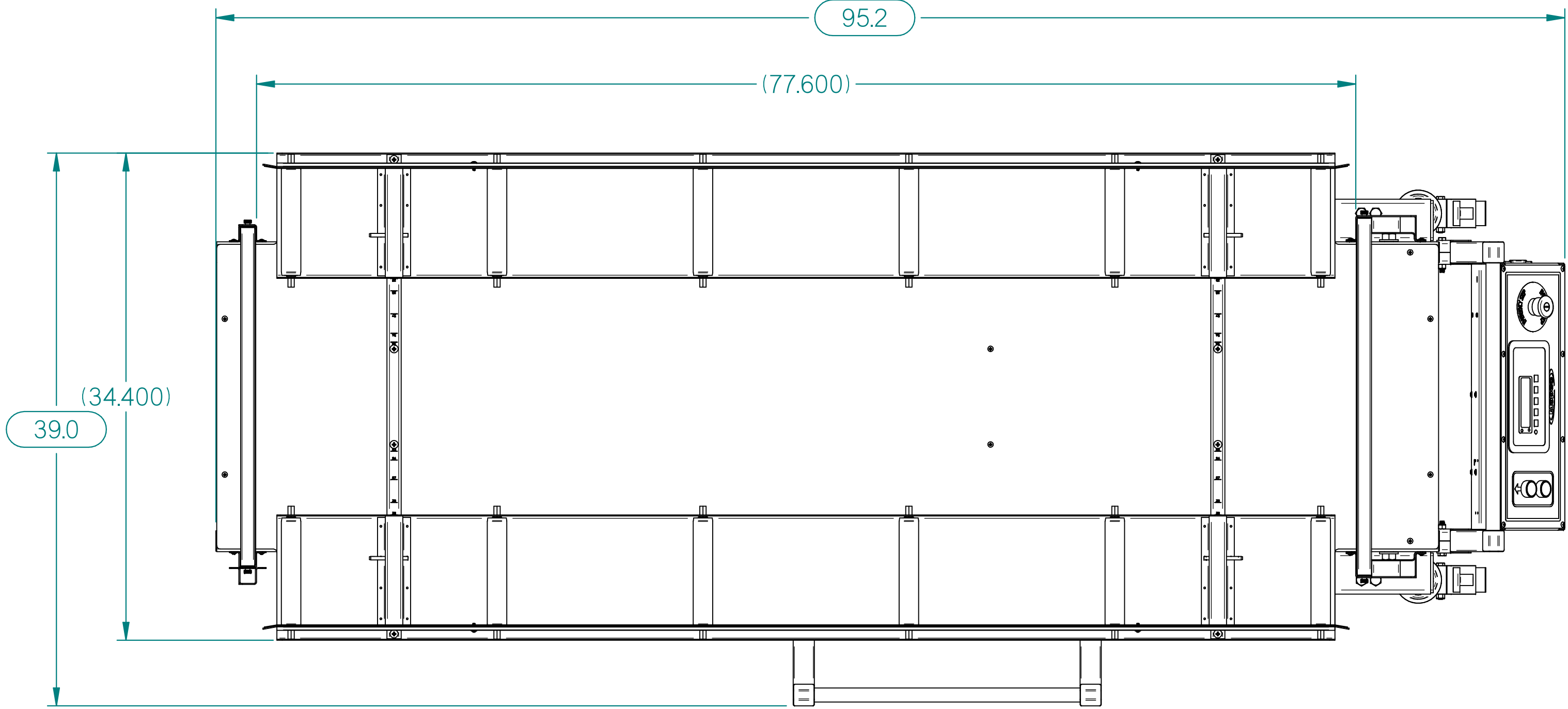
DRAWN BY:
DATE: dstewart
4/15/2025
CHECKED BY:
DATE: ---
4/15/2025
APPROVED BY:
DATE: MMcCLAIN
4/15/2025

PART
NUMBER: JD5001-A
DESCRIPTION: 5 TIER CADAVER LIFT W/ ADJ. PASS THROUGH PALLET
SIZE: A2
FILE
NAME: JD5001-A.dft
SCALE: 1:4
DO NOT SCALE
IF IN DOUBT ASK
SHEET 1 OF 3

A
B
C
D
E
F
G
H

I 2 3 4 5 6 7 8 9 10 11

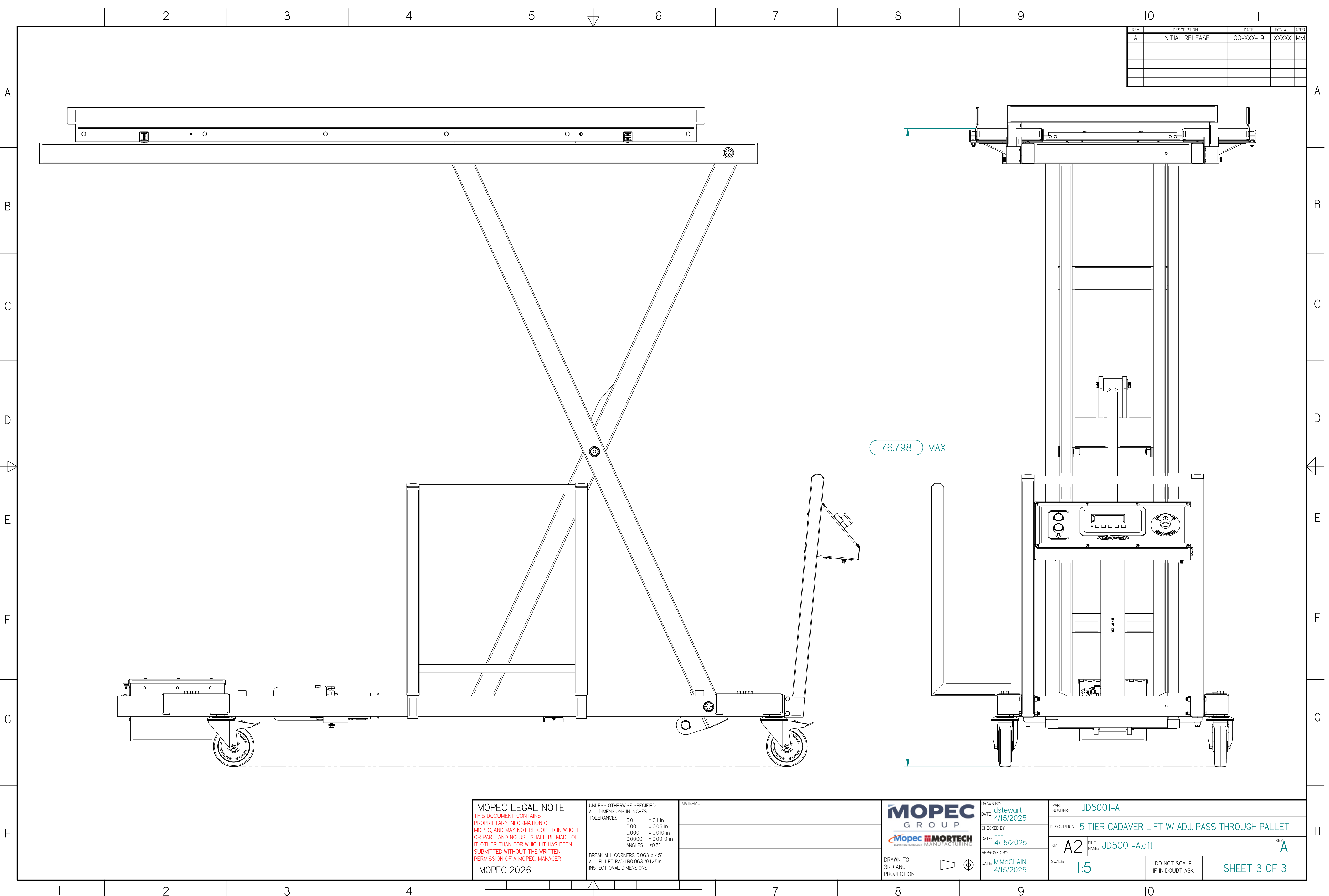
REV	DESCRIPTION	DATE	ECN #	APPR
A	INITIAL RELEASE	00-XXX-19	XXXXX	MM



MOPEC LEGAL NOTE THIS DOCUMENT CONTAINS PROPRIETARY INFORMATION OF MOPEC, AND MAY NOT BE COPIED IN WHOLE OR PART, AND NO USE SHALL BE MADE OF IT OTHER THAN FOR WHICH IT HAS BEEN SUBMITTED WITHOUT THE WRITTEN PERMISSION OF A MOPEC MANAGER MOPEC 2026		UNLESS OTHERWISE SPECIFIED: ALL DIMENSIONS IN INCHES TOLERANCES 0.0 ± 0.1 in 0.00 ± 0.05 in 0.000 ± 0.010 in 0.0000 ± 0.0010 in ANGLES ± 0.5° BREAK ALL CORNERS 0.063 X 45° ALL FILLET RADII R0.063 /0.125in INSPECT OVAL DIMENSIONS	MATERIAL	MOPEC GROUP Mopec MORTTECH ADVANCED TECHNOLOGY MANUFACTURING		DRAWN BY: dstewart DATE: 4/15/2025 CHECKED BY: --- DATE: 4/15/2025 APPROVED BY: MMcCLAIN DATE: 4/15/2025	PART NUMBER: JD5001-A DESCRIPTION: 5 TIER CADAVER LIFT W/ ADJ. PASS THROUGH PALLET SIZE: A2 FILE NAME: JD5001-A.dft SCALE: 1:7	REV: A DO NOT SCALE IF IN DOUBT ASK	SHEET 2 OF 3
-----------------------------------------------------------------------------------------------------------------------------------------------------------------------------------------------------------------------------------------------------------------------	--	--------------------------------------------------------------------------------------------------------------------------------------------------------------------------------------------------------------------------------------------------------------------	----------	----------------------------------------------------------------------------------	--	-------------------------------------------------------------------------------------------------------------------------	--------------------------------------------------------------------------------------------------------------------------------------------	----------------------------------------	--------------

I 2 3 4 5 6 7 8 9 10

JD5001-A.dft



REV	DESCRIPTION	DATE	ECN #	APPR
A	INITIAL RELEASE	00-XXX-19	XXXXX	MM

MOPEC LEGAL NOTE

THIS DOCUMENT CONTAINS PROPRIETARY INFORMATION OF MOPEC, AND MAY NOT BE COPIED IN WHOLE OR PART, AND NO USE SHALL BE MADE OF IT OTHER THAN FOR WHICH IT HAS BEEN SUBMITTED WITHOUT THE WRITTEN PERMISSION OF A MOPEC MANAGER

MOPEC 2026

UNLESS OTHERWISE SPECIFIED:
ALL DIMENSIONS IN INCHES

TOLERANCES

0.0	± 0.1 in
0.00	± 0.05 in
0.000	± 0.010 in
0.0000	± 0.0010 in
ANGLES	± 0.5°

BREAK ALL CORNERS 0.063 X 45°
ALL FILLET RADII R0.063 /0.125in
INSPECT OVAL DIMENSIONS

MATERIAL

MOPEC GROUP

MORTECH
ADVANCED TECHNOLOGY MANUFACTURING

DRAWN TO 3RD ANGLE PROJECTION

DRAWN BY: **dstewart**
DATE: **4/15/2025**

CHECKED BY: **---**
DATE: **4/15/2025**

APPROVED BY: **MMcCLAIN**
DATE: **4/15/2025**

PART NUMBER: **JD5001-A**

DESCRIPTION: **5 TIER CADAVER LIFT W/ ADJ. PASS THROUGH PALLET**

SIZE: **A2** FILE NAME: **JD5001-A.dft** REV: **A**

SCALE: **1:5**

DO NOT SCALE IF IN DOUBT ASK

SHEET 3 OF 3

* JD5001-A.dft*