

| REV | DESCRIPTION | DATE | ECN # | APPR |
|-----|-----------------|-----------|-------|------|
| A | INITIAL RELEASE | 00-XXX-19 | XXXXX | MM |
| | | | | |
| | | | | |
| | | | | |
| | | | | |

| Item Number | Quantity | File Name | Title | Material |
|-------------|----------|------------|---------|---------------------------------|
| 1 | 1 | 6494-B.asm | MIDDLE | JD5000 SERIES LIFT |
| 2 | 1 | 6576-A.asm | 23 TRAY | ADJUSTABLE END-SIDE LOAD PALLET |
| 3 | 1 | 6547-C.asm | | JD SIDE HANDLE |

THIS DOCUMENT CONTAINS PROPRIETARY INFORMATION OF MOPEC, AND MAY NOT BE COPIED IN WHOLE OR PART, AND NO USE SHALL BE MADE OF IT OTHER THAN FOR WHICH IT HAS BEEN SUBMITTED WITHOUT THE WRITTEN PERMISSION OF A MOPEC MANAGER

MOPEC 2020

UNLESS OTHERWISE SPECIFIED, ALL DIMENSIONS IN INCHES

TOLERANCES

| | |
|--------|-------------|
| 0.0 | ± 0.1 in |
| 0.00 | ± 0.05 in |
| 0.000 | ± 0.010 in |
| 0.0000 | ± 0.0010 in |
| ANGLES | ±0.5° |

BREAK ALL CORNERS 0.063 X 45°

ALL FILLET RADIUS 0.063 / 0.125 in

INSPECT OVAL DIMENSIONS

MATERIAL

MATERIAL USAGE

Error: No reference

FINISH

Error: No reference

MOPEC GROUP

MOPEC MORTECH

800 Tech Row,
Madison Heights, MI 48071

DRAWN TO 3RD ANGLE PROJECTION

DRAWN BY: dstewart

DATE: 1/30/2020

CHECKED BY:

DATE: 1/30/2020

APPROVED BY:

DATE: M.McCLAIN 1/30/2020

PART NUMBER: PASSTHRU

DESCRIPTION: END-SIDE ACCESS CAD LIFT

SIZE: A2

FILE NAME: JD5000.dft

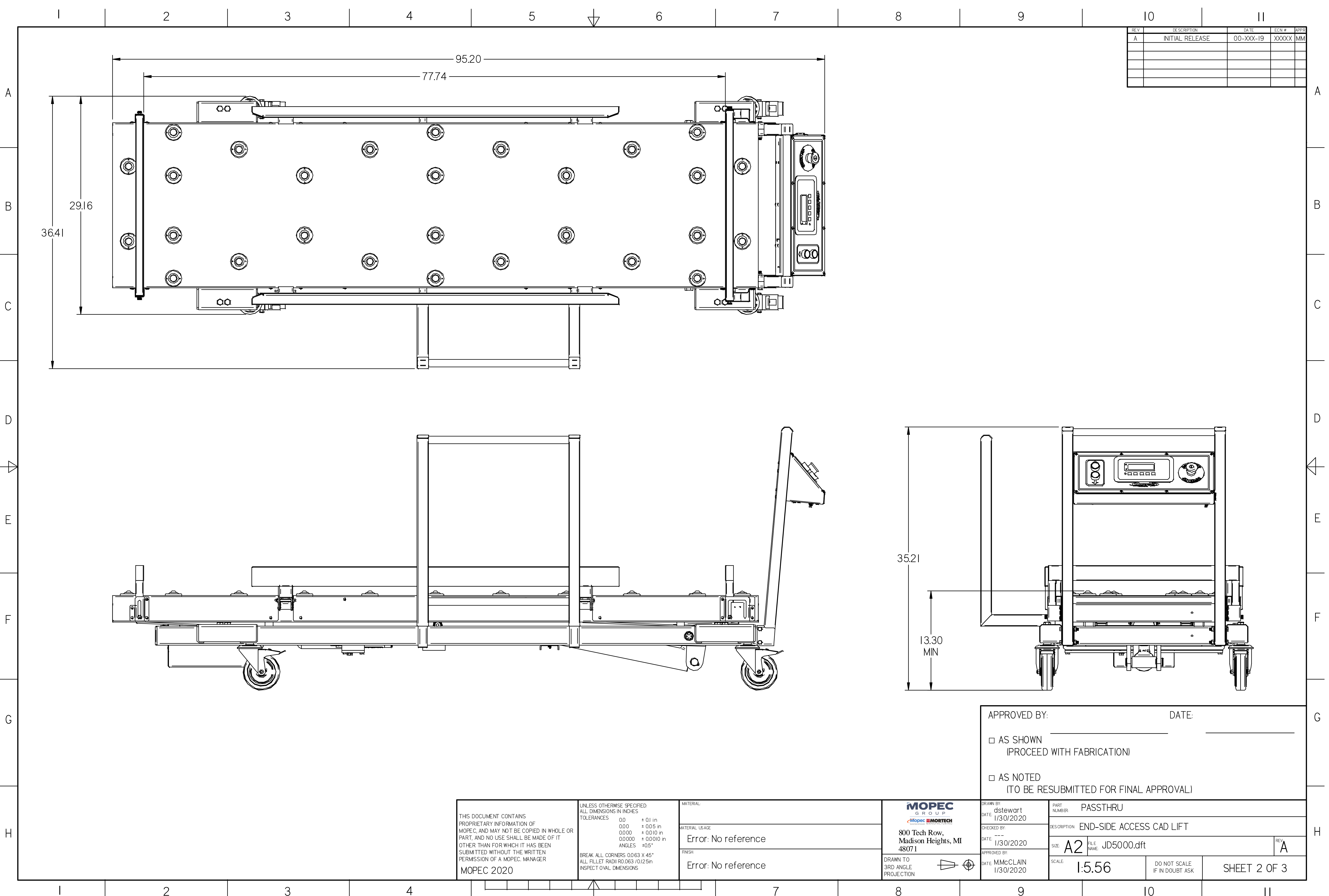
REV: A

SCALE: 1:5

DO NOT SCALE IF IN DOUBT ASK

SHEET 1 OF 3

JD5000.dft

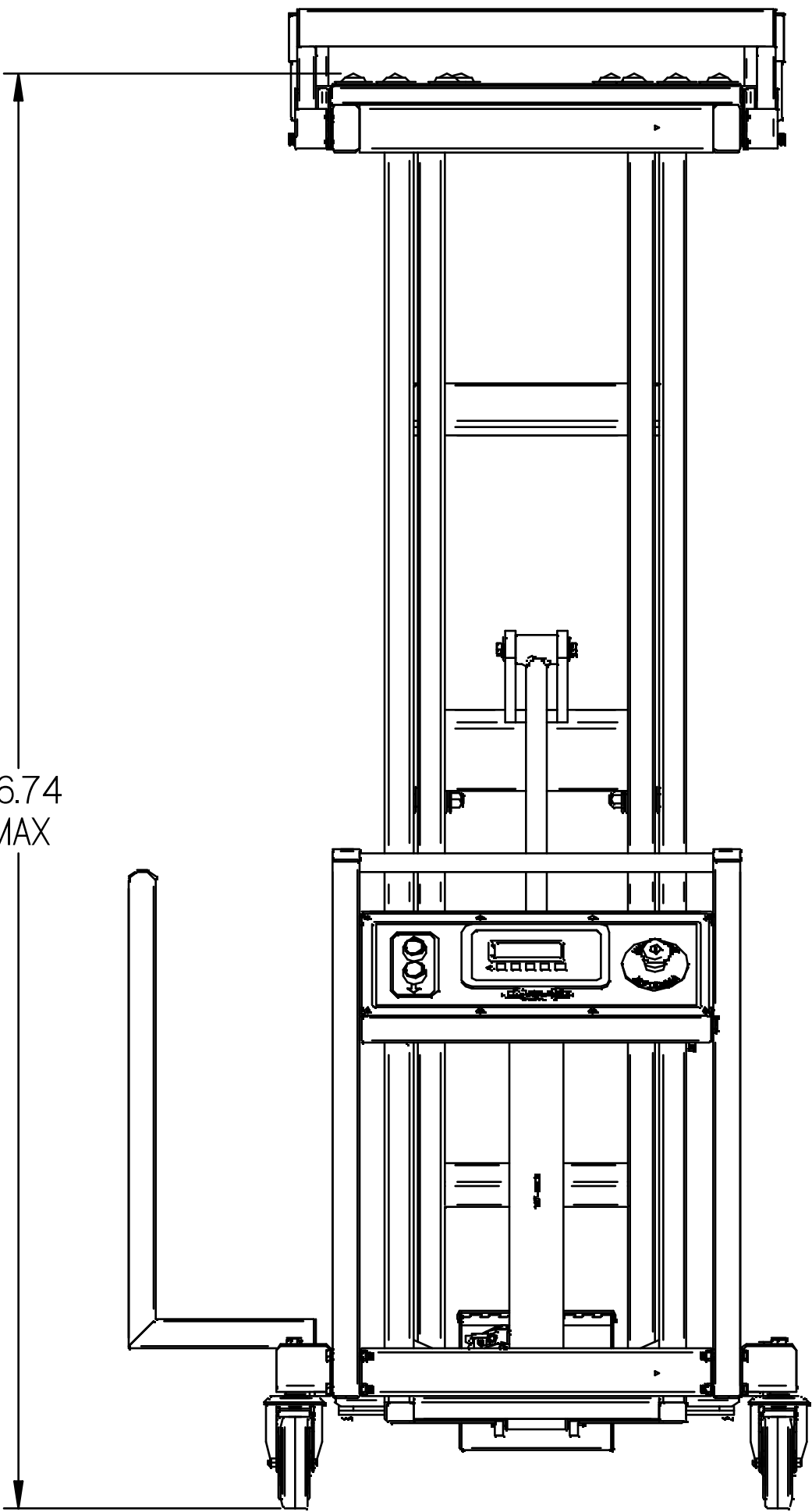
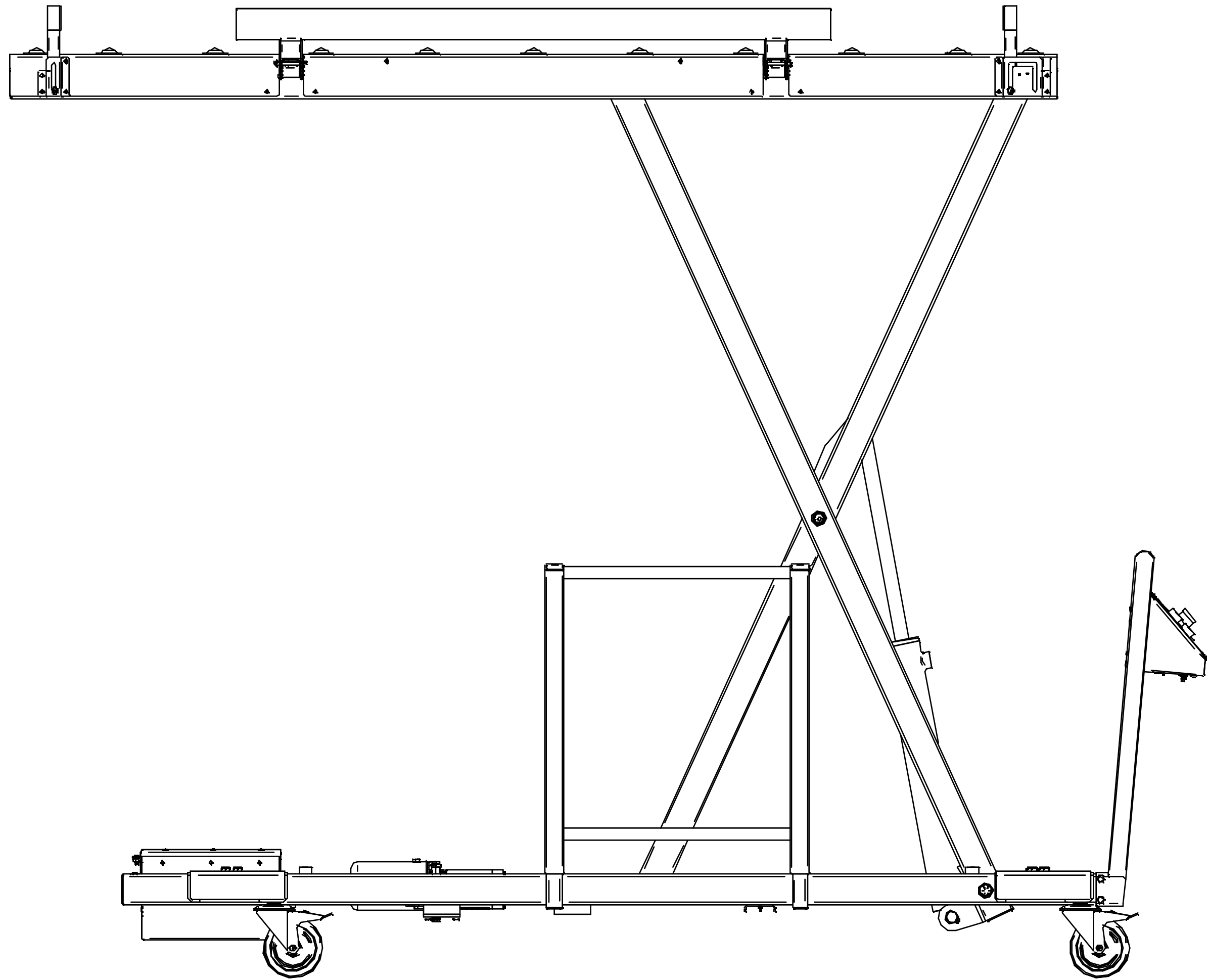
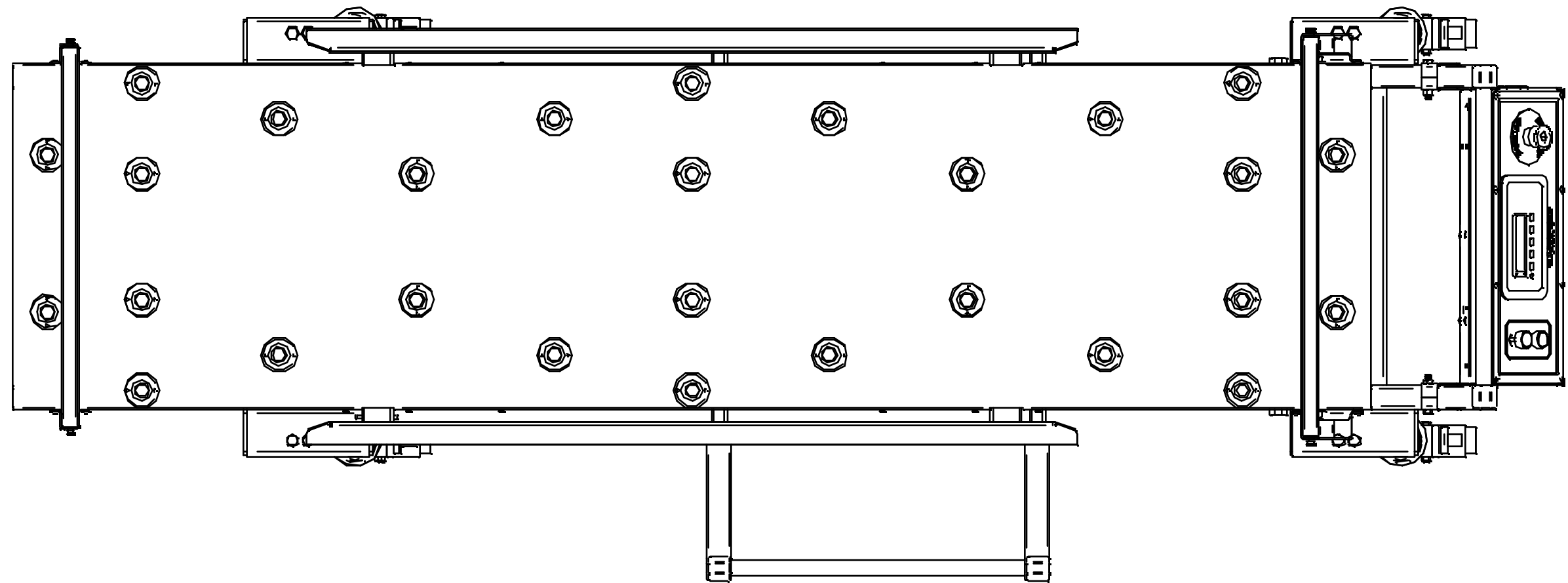


JD5000.dft

A
B
C
D
E
F
G
H

I 2 3 4 5 6 7 8 9 10 11

| REV | DESCRIPTION | DATE | ECN # | APPR |
|-----|-----------------|-----------|-------|------|
| A | INITIAL RELEASE | 00-XXX-19 | XXXXX | MM |
| | | | | |
| | | | | |
| | | | | |
| | | | | |



76.74
MAX

THIS DOCUMENT CONTAINS PROPRIETARY INFORMATION OF MOPEC, AND MAY NOT BE COPIED IN WHOLE OR PART, AND NO USE SHALL BE MADE OF IT OTHER THAN FOR WHICH IT HAS BEEN SUBMITTED WITHOUT THE WRITTEN PERMISSION OF A MOPEC MANAGER

MOPEC 2020

UNLESS OTHERWISE SPECIFIED, ALL DIMENSIONS IN INCHES

| | | |
|------------|--------|-------------|
| TOLERANCES | 0.0 | ± 0.1 in |
| | 0.00 | ± 0.05 in |
| | 0.000 | ± 0.010 in |
| | 0.0000 | ± 0.0010 in |
| | ANGLES | ± 0.5° |

BREAK ALL CORNERS 0.063 X 45°
ALL FILLET RADI R0.063 / 0.125 in
INSPECT OVAL DIMENSIONS

MATERIAL

MATERIAL USAGE

Error: No reference

FINISH

Error: No reference

MOPEC GROUP

MOPEC MORTECH

800 Tech Row,
Madison Heights, MI
48071

DRAWN TO 3RD ANGLE PROJECTION

DRAWN BY: dstewart
DATE: 1/30/2020

CHECKED BY: ---
DATE: 1/30/2020

APPROVED BY: ---
DATE: M.McCLAIN
1/30/2020

PART NUMBER: PASSTHRU

DESCRIPTION: END-SIDE ACCESS CAD LIFT

SIZE: A2

FILE NAME: JD5000.dft

SCALE: 1:8

DO NOT SCALE IF IN DOUBT ASK

SHEET 3 OF 3

REV: A

* JD5000.dft*