

TRAY REFERENCE ONLY

REV	DESCRIPTION	DATE	ECN #	APPR
A	INITIAL RELEASE	00-XXX-19	XXXXX	MM

Item #	Qty.	File Name	Title	Material	Rev.
1	1	600040ELECT.asm	MIN HEIGHTS BASE AND SCISSOR ASSEMBLY		
2	1	JC027-B.asm	BODY TRAY, 27X77, HAND SLOTS		B
3	1	JC030-B.asm	BODY TRAY, 30X77, HAND SLOTS		B
4	1	JZ025-A.par	CADAVER COVER ELASTANE BLUE 79.4 "L TO 85.5"L		A
5	2	PA0023-A.par	Bushing Powdered Metal Bronze .5025 x .753 x 1		A
6	1	PA0024-A.par	BUSHING, 1.00 OD X .75 ID X 1.00 L		A
7	8	PB0137.par	BOLT - ZINC, M8 x 1.25 x 14mm, HEX HEAD		A
8	8	PB0211.par	WASHER - SS, M8 x 5/16", SERRATED BELLEVILLE		A
9	3	PM0803.par	5"x1" CASTER WHEEL, WITH BRAKE. GREY LOCK		A
10	1	PM0804.par	5"x1" CASTER WHEEL, WITH BRAKE. DRIVE LOCK GREEN		A
11	1	S7444-A.asm	CONCEALED CARRY, END/SIDE LOAD PALLET		A

MOPEC LEGAL NOTE

THIS DOCUMENT CONTAINS PROPRIETARY INFORMATION OF MOPEC, AND MAY NOT BE COPIED IN WHOLE OR PART, AND NO USE SHALL BE MADE OF IT OTHER THAN FOR WHICH IT HAS BEEN SUBMITTED WITHOUT THE WRITTEN PERMISSION OF A MOPEC MANAGER

MOPEC 2026

UNLESS OTHERWISE SPECIFIED:
ALL DIMENSIONS IN INCHES

TOLERANCES

0.0	± 0.1 in
0.00	± 0.05 in
0.000	± 0.010 in
0.0000	± 0.0010 in
ANGLES	± 0.5°

BREAK ALL CORNERS 0.063 X 45°
ALL FILLET RADII R0.063 / 0.125 in
INSPECT OVAL DIMENSIONS

MATERIAL

MOPEC GROUP

MOPEC MORTTECH

ADVANCED TECHNOLOGY MANUFACTURING

DRAWN TO 3RD ANGLE PROJECTION

DRAWN BY: dstewart2
DATE: 3/10/2022

CHECKED BY: ---
DATE: 3/10/2022

APPROVED BY: MMcCLAIN
DATE: 3/10/2022

PART NUMBER: JD4000-F

DESCRIPTION: CONCEALED TRANSPORT LIFT, END ACCESS/SIDE ACCESS

SIZE: A2

FILE NAME: JD4000-F.dft

SCALE: 1:4

DO NOT SCALE IF IN DOUBT ASK

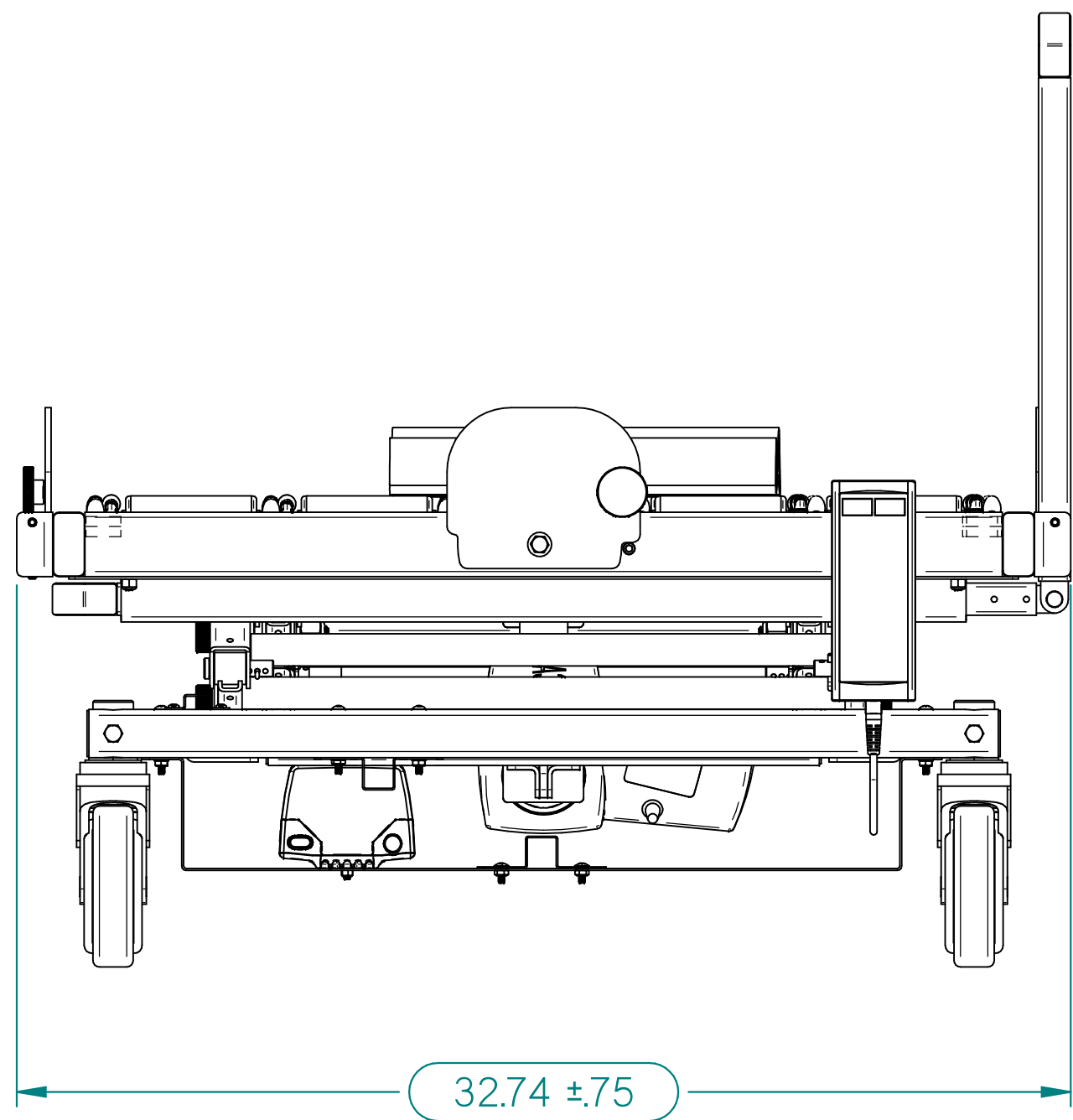
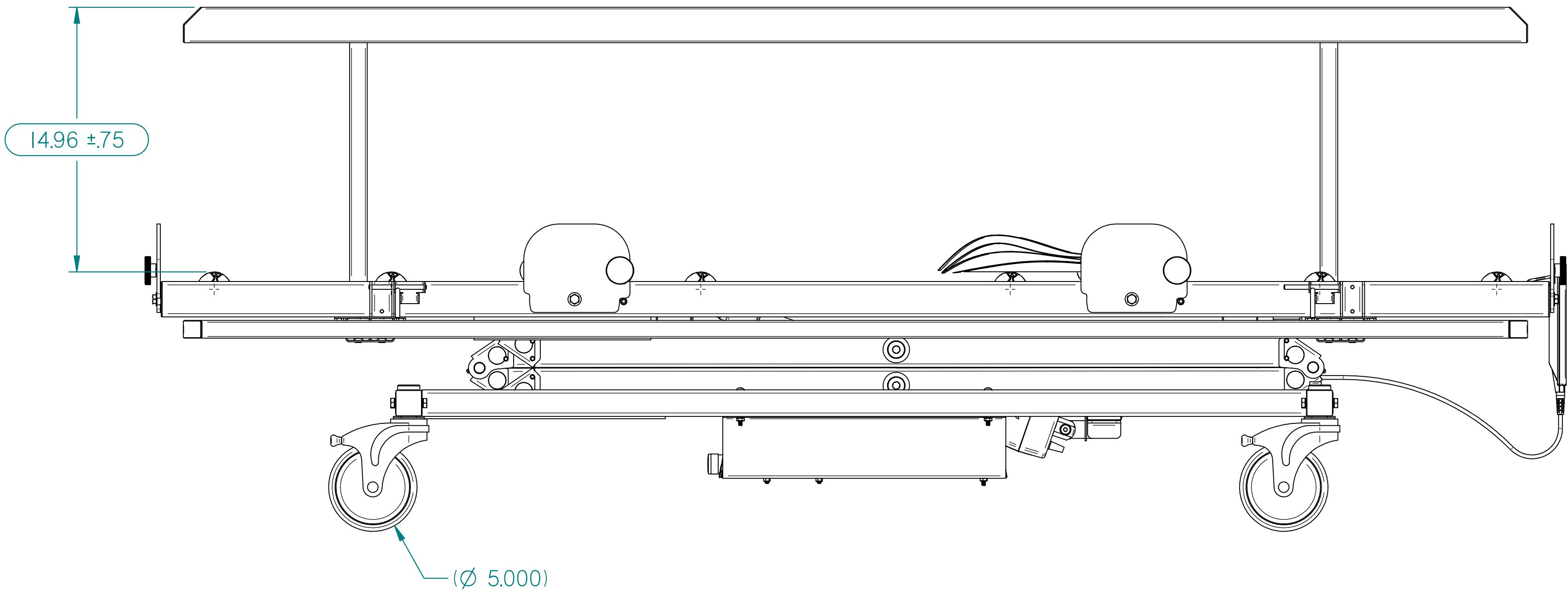
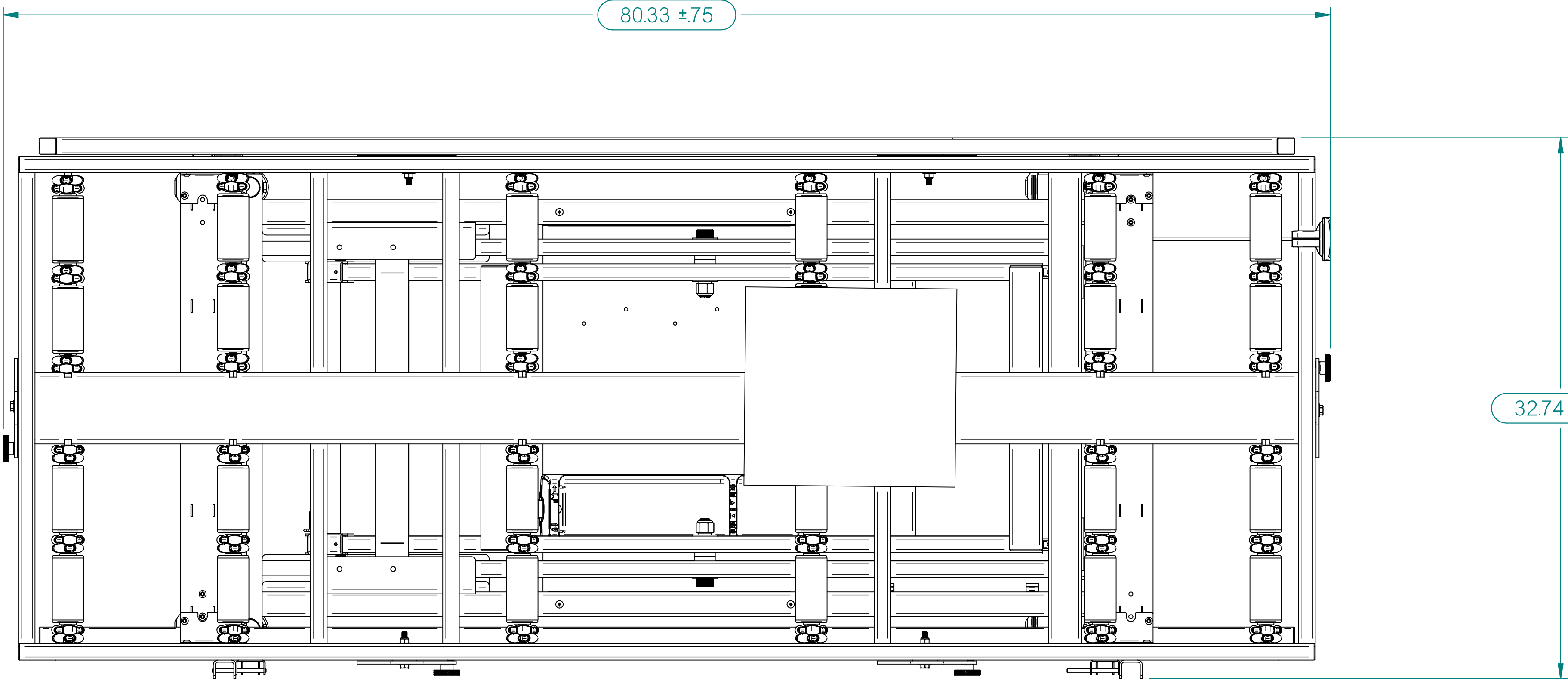
SHEET 1 OF 3

JD4000-F.dft

A
B
C
D
E
F
G
H

I 2 3 4 5 6 7 8 9 10 11

REV	DESCRIPTION	DATE	ECN #	APPR
A	INITIAL RELEASE	00-XXX-19	XXXXX	MM



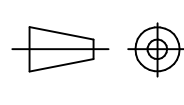
MOPEC LEGAL NOTE
THIS DOCUMENT CONTAINS
PROPRIETARY INFORMATION OF
MOPEC, AND MAY NOT BE COPIED IN WHOLE
OR PART, AND NO USE SHALL BE MADE OF
IT OTHER THAN FOR WHICH IT HAS BEEN
SUBMITTED WITHOUT THE WRITTEN
PERMISSION OF A MOPEC MANAGER
MOPEC 2026

UNLESS OTHERWISE SPECIFIED:
ALL DIMENSIONS IN INCHES
TOLERANCES
0.0 ± 0.1 in
0.00 ± 0.05 in
0.000 ± 0.010 in
0.0000 ± 0.0010 in
ANGLES ± 0.5°
BREAK ALL CORNERS 0.063 X 45°
ALL FILLET RADII R0.063 / 0.125 in
INSPECT OVAL DIMENSIONS

MATERIAL



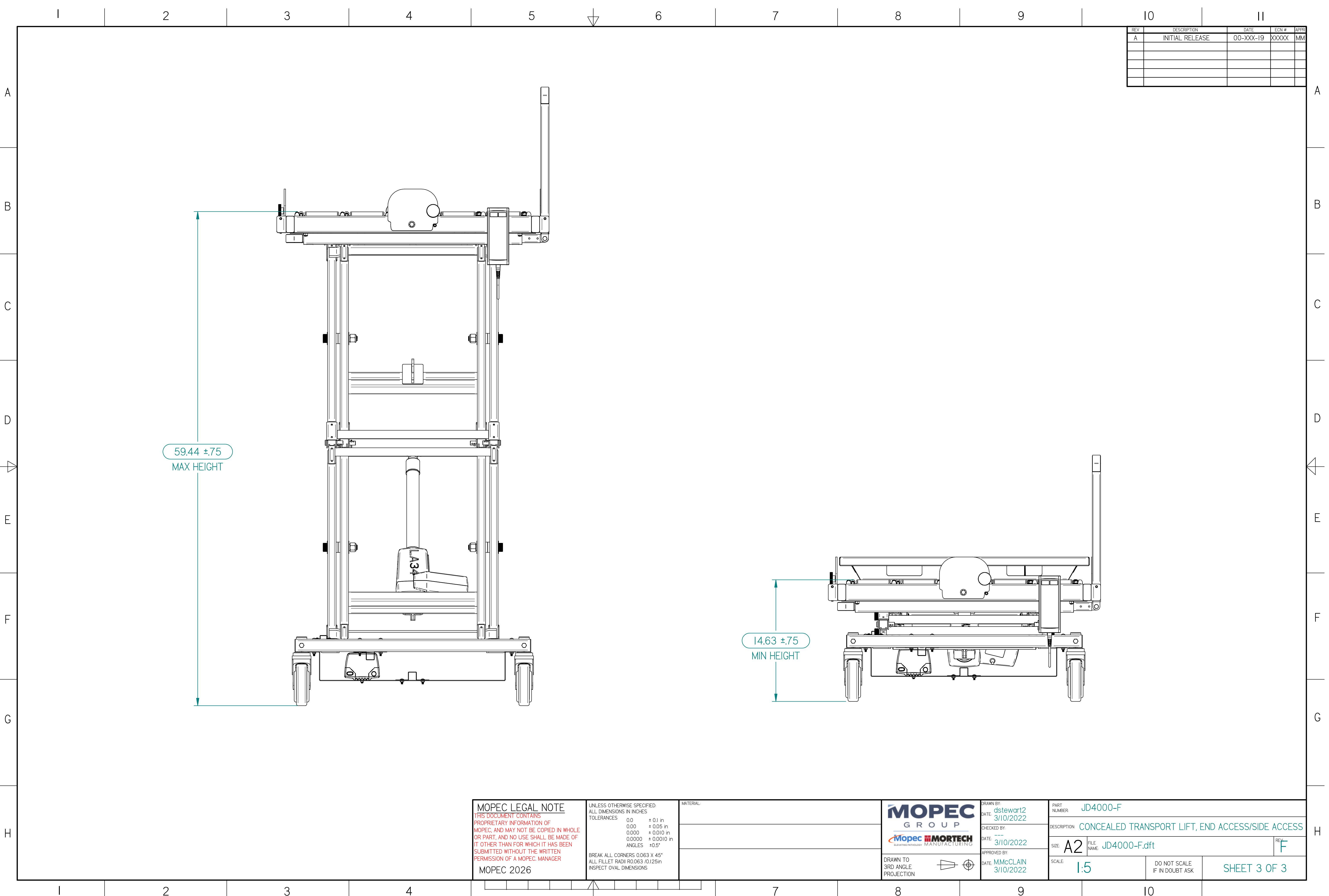
DRAWN TO
3RD ANGLE
PROJECTION



DRAWN BY:
DATE: dstewart2
3/10/2022
CHECKED BY:
DATE: 3/10/2022
APPROVED BY:
DATE: MMcCLAIN
3/10/2022

PART
NUMBER: JD4000-F
DESCRIPTION: CONCEALED TRANSPORT LIFT, END ACCESS/SIDE ACCESS
SIZE: A2
FILE
NAME: JD4000-F.dft
SCALE: 1:5
DO NOT SCALE
IF IN DOUBT ASK
SHEET 2 OF 3

JD4000-F.dft



REV	DESCRIPTION	DATE	ECN #	APPR
A	INITIAL RELEASE	00-XXX-19	XXXXX	MM

MOPEC LEGAL NOTE

THIS DOCUMENT CONTAINS PROPRIETARY INFORMATION OF MOPEC, AND MAY NOT BE COPIED IN WHOLE OR PART, AND NO USE SHALL BE MADE OF IT OTHER THAN FOR WHICH IT HAS BEEN SUBMITTED WITHOUT THE WRITTEN PERMISSION OF A MOPEC MANAGER

MOPEC 2026

UNLESS OTHERWISE SPECIFIED:
ALL DIMENSIONS IN INCHES

TOLERANCES	0.0	± 0.1 in
	0.00	± 0.05 in
	0.000	± 0.010 in
	0.0000	± 0.0010 in
	ANGLES	± 0.5°

BREAK ALL CORNERS 0.063 X 45°
ALL FILLET RADII R0.063 /0.125in
INSPECT OVAL DIMENSIONS

MATERIAL

MOPEC GROUP

Mopec MORTECH
ADVANCED TECHNOLOGY MANUFACTURING

DRAWN TO 3RD ANGLE PROJECTION

DRAWN BY: dstewart2
DATE: 3/10/2022

CHECKED BY: ---
DATE: 3/10/2022

APPROVED BY: MMcCLAIN
DATE: 3/10/2022

PART NUMBER: JD4000-F

DESCRIPTION: CONCEALED TRANSPORT LIFT, END ACCESS/SIDE ACCESS

SIZE: A2

SCALE: 1:5

DO NOT SCALE IF IN DOUBT ASK

SHEET 3 OF 3

FILE NAME: JD4000-F.dft

REV: F

* JD4000-F.dft*