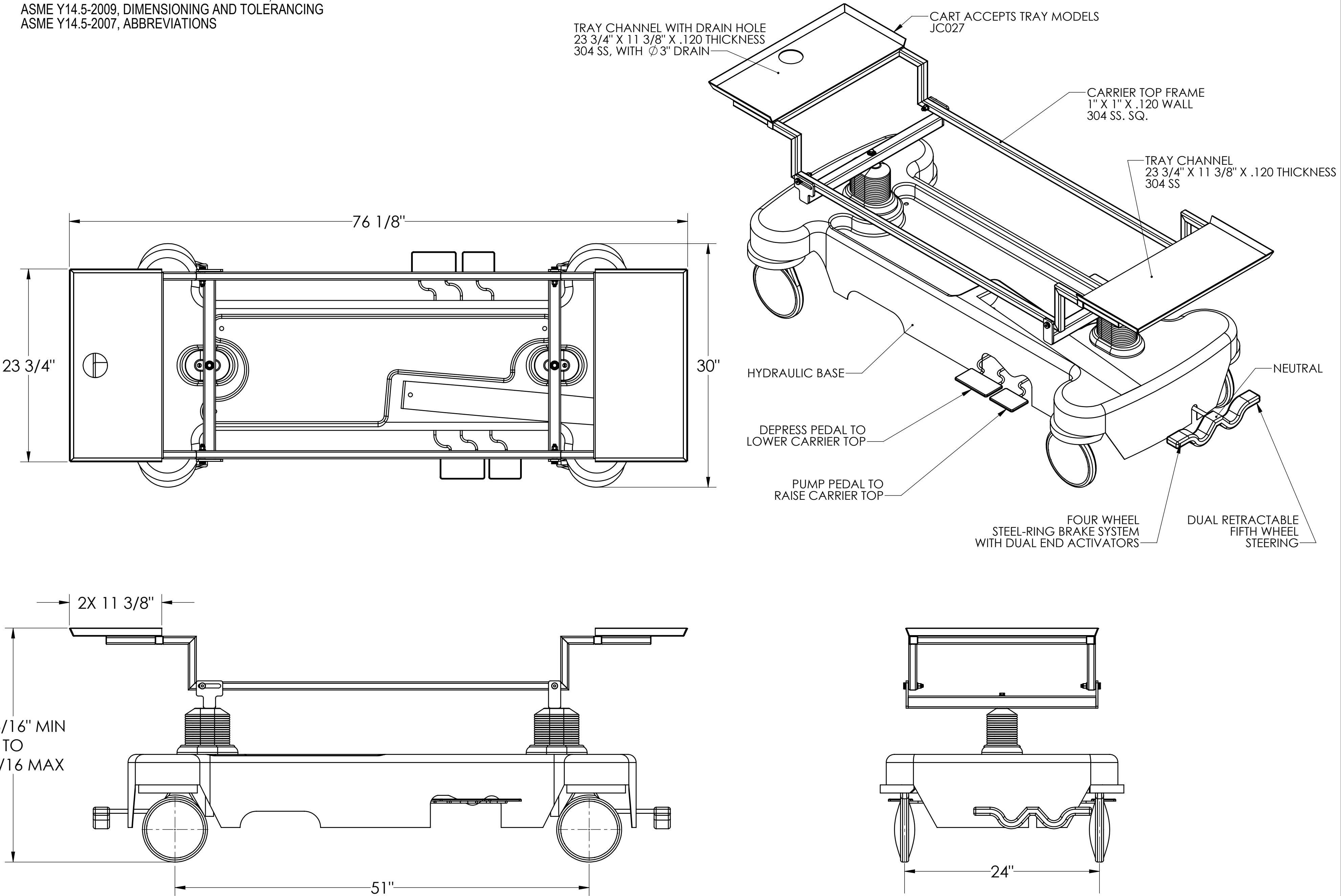


NOTES: UNLESS OTHERWISE SPECIFIED

1. APPLICABLE STANDARDS AND SPECIFICATIONS;
ASME Y14.5-2009, DIMENSIONING AND TOLERANCING
ASME Y14.5-2007, ABBREVIATIONS

REVISIONS				
REV.	DCN#	DESCRIPTION	DATE	CHANGED/APPROVED
A	-	PRODUCTION RELEASE	03/10/14	GG/RR



CUSTOMER		APPROVAL		<div>PROPRIETARY</div> <div>THIS DOCUMENT AND THE DATE DISCLOSED HEREIN AND HEREWITH IS NOT TO BE REPRODUCED, USED, OR OTHERWISE DISCLOSED IN WHOLE OR IN PART TO ANYONE WITHOUT WRITTEN AUTHORIZATION FROM MORTECH MFG.</div>		<div><div><div>MOPEC GROUP</div><div>MORTECH</div></div><div>ISO 9001:2015 CERTIFIED COMPANY</div><div>411 North Aerojet Avenue Azusa, CA 91702 tel: (800) 410-0100 (626) 334-1471 fax: (626) 334-1704 www.moritechmfg.com</div></div>			
PROJECT						TITLE			
LINE 1				DO NOT SCALE DRAWING		APPROVALS		DATE	
		SIGNATURE		DATE		MATERIAL		DRAWN BY	
						N/A			
						FINISH		CHECKED BY	
						APPROVED BY			
								SIZE	
								C	
								DWG NO.	
								600018-H-JC027AP	
								REV.	
								A	
								SCALE	
								1:8	
								NEXT ASSY.	
								SHEET	
								1	
								OF	
								1	