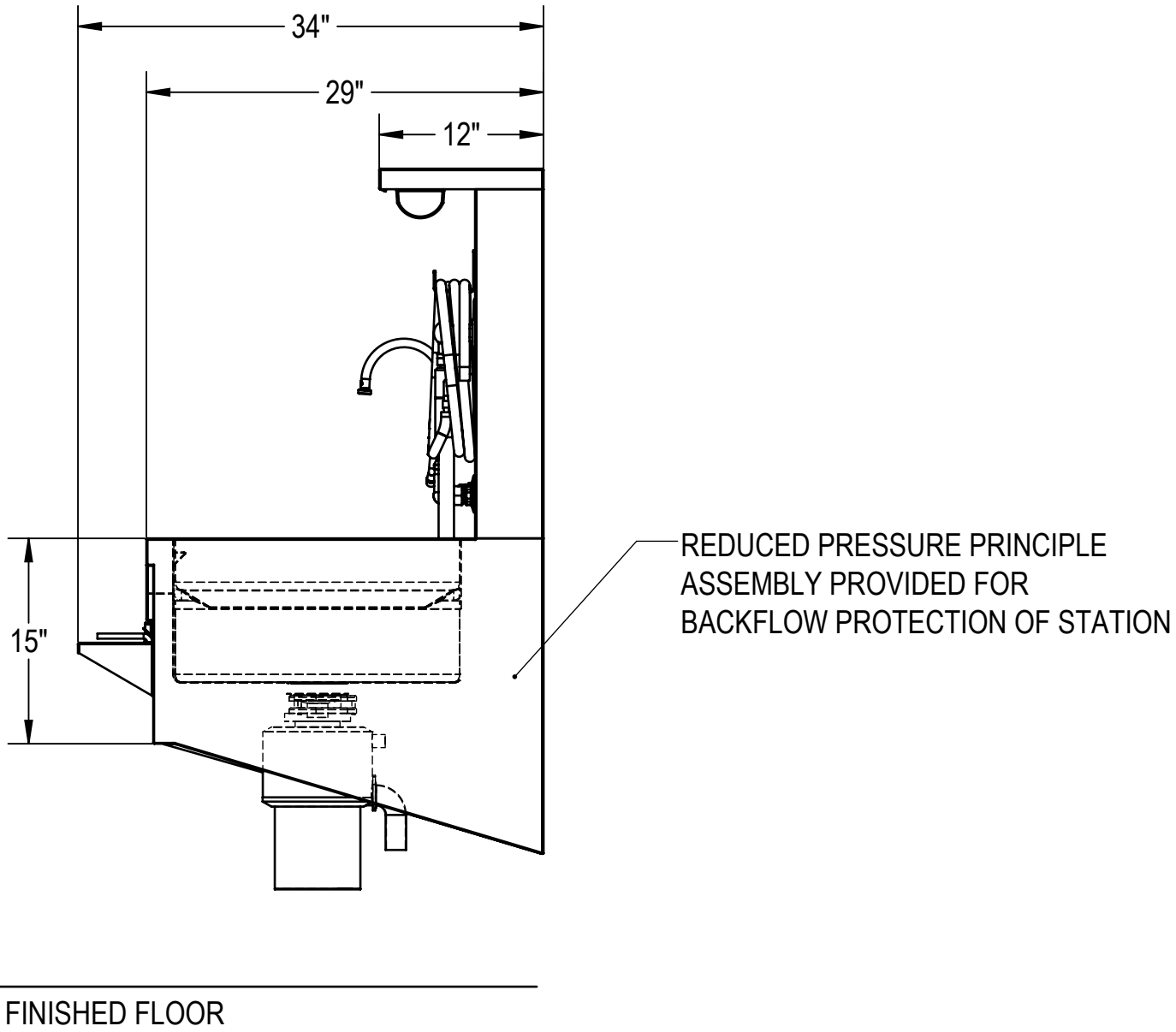
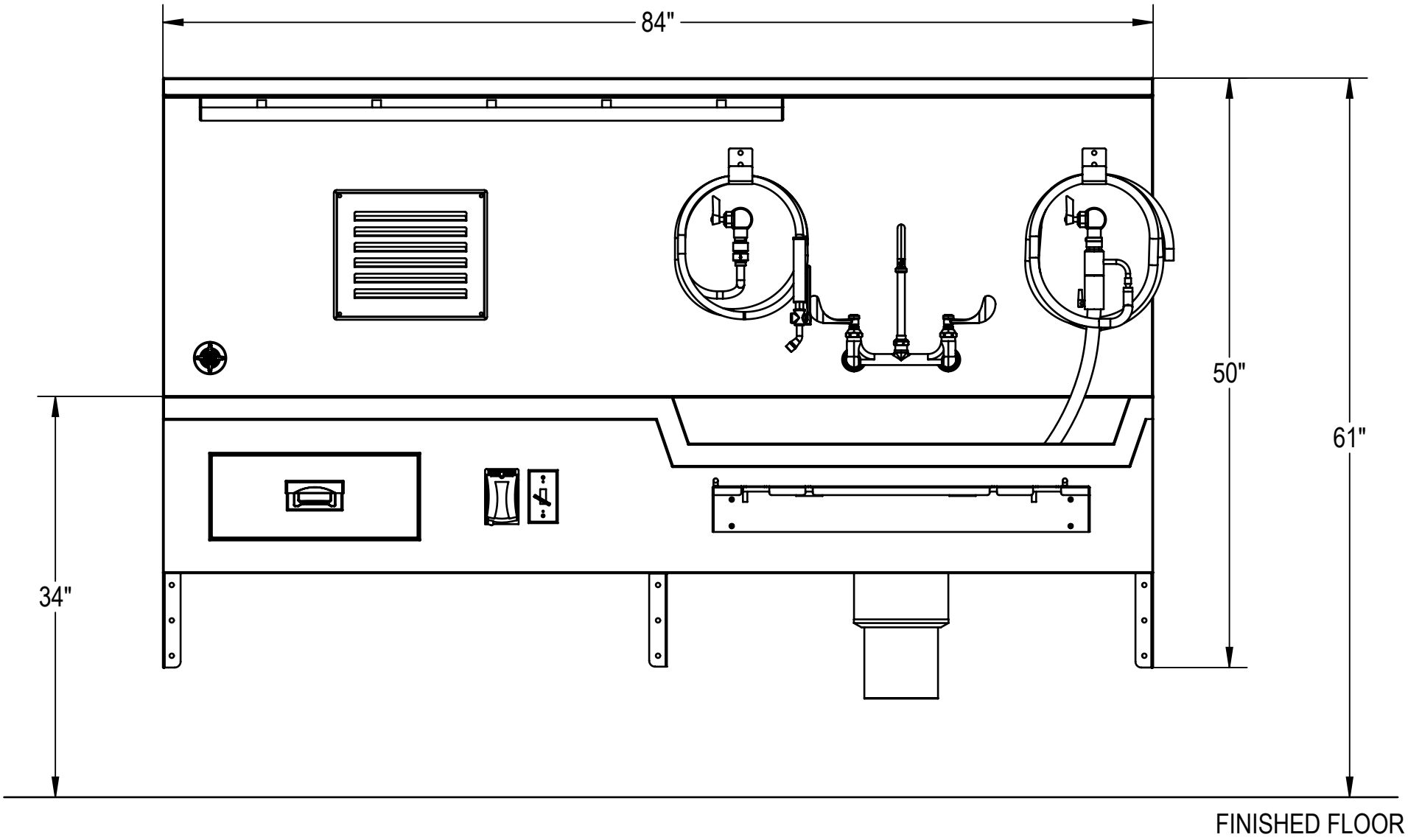
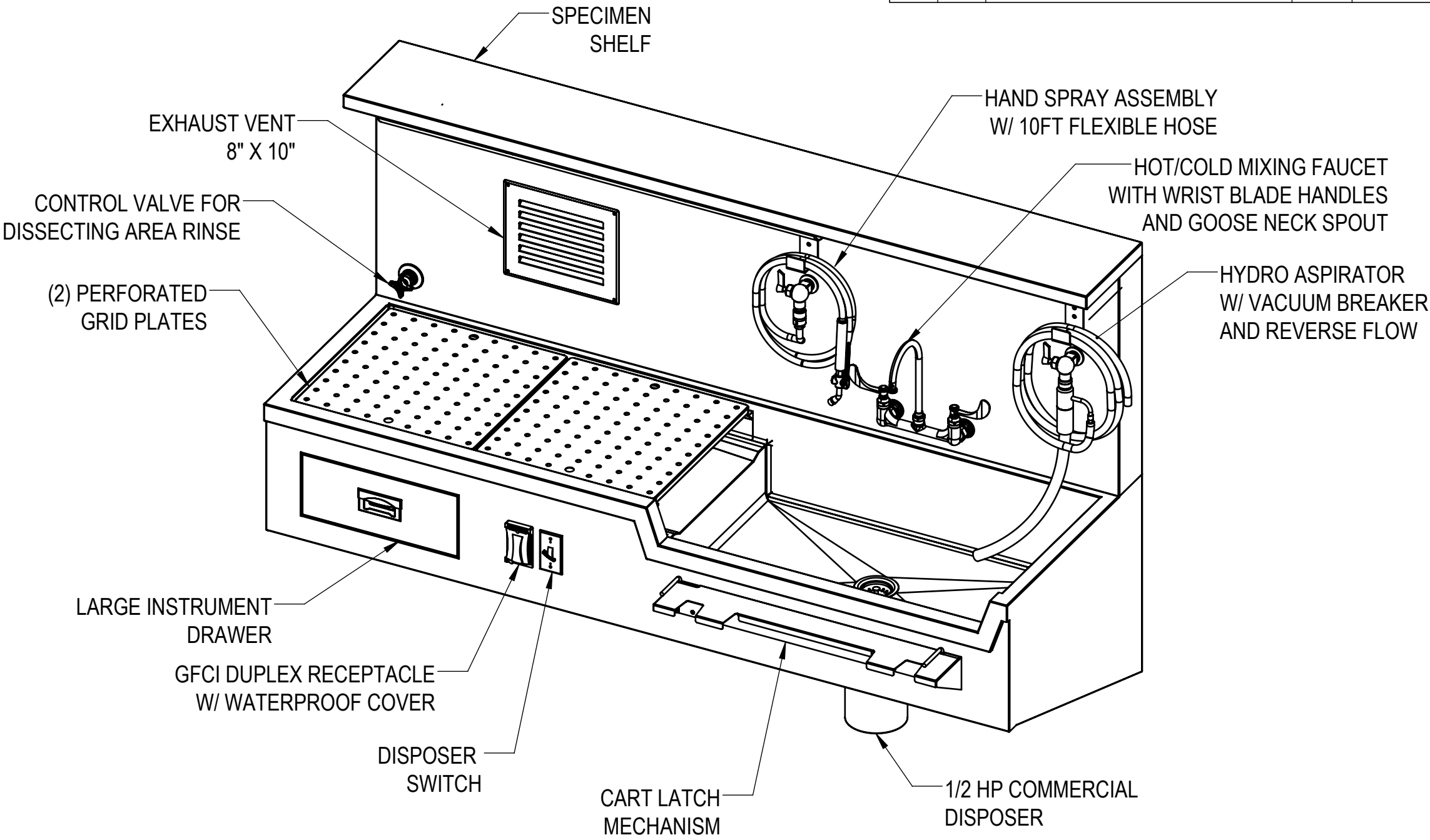
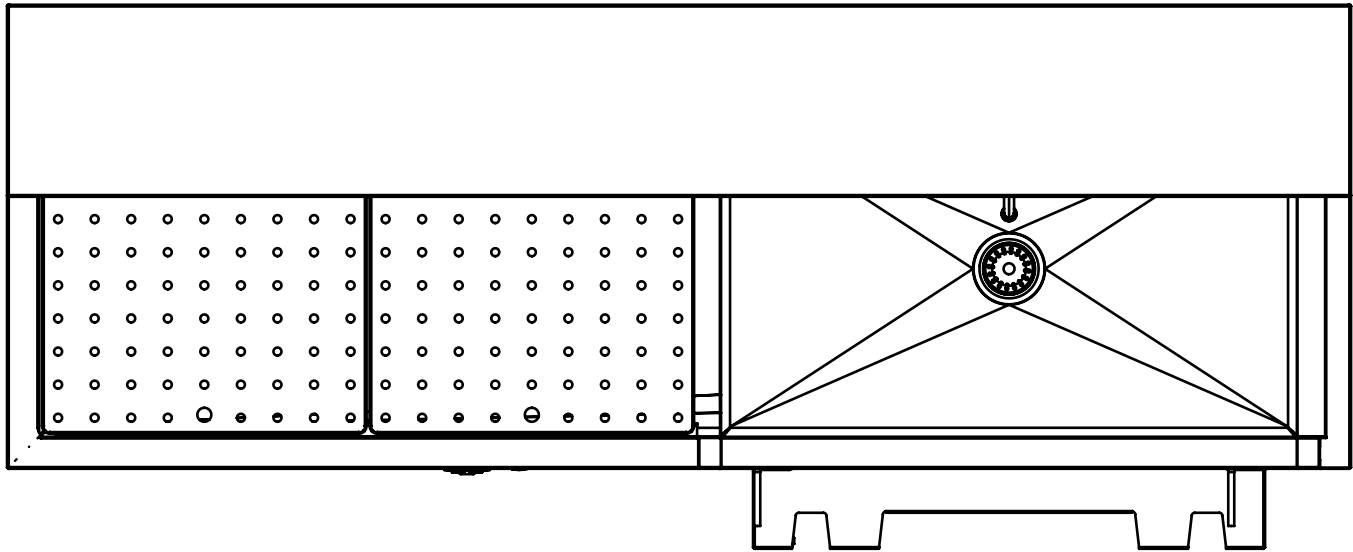


NOTES: UNLESS OTHERWISE SPECIFIED

1. APPLICABLE STANDARDS AND SPECIFICATIONS;
ANSI Y14.5M, DIMENSIONS AND TOLERANCES
ANSI Y1.1, ABBREVIATIONS

REVISIONS				
REV.	DCN#	DESCRIPTION	DATE	CHANGED/APPROVED
A		PRELIMINARY RELEASE	9/10/2019	FY



CUSTOMER CUSTOMER NAME		APPROVAL		<div>PROPRIETARY</div> <div>THIS DOCUMENT AND THE DATE DISCLOSED HEREIN AND HEREWITH IS NOT TO BE REPRODUCED, USED, OR OTHERWISE DISCLOSED IN WHOLE OR IN PART TO ANYONE WITHOUT WRITTEN AUTHORIZATION FROM MORTECH MFG.</div>	<div>MOPEC GROUP</div> <div>411 North Aerojet Avenue Azusa, CA 91702 tel: (800) 410-0100 (626) 334-1471 fax: (626) 334-1704 www.mortechmfg.com</div>		
PROJECT PROJECT NAME		SIGNATURE					
		DATE					
				DO NOT SCALE DRAWING	APPROVALS	DATE	
				MATERIAL 304 STAINLESS STEEL	DRAWN BY BRIAN W.	03/26/19	
				FINISH #4 SATIN	CHECKED BY		
				APPROVED BY			
				TITLE MODEL 1036-8			
				SIZE C			
				DWG NO. 1036-8AP		REV. A	
				SCALE 1:12	NEXT ASSY.	SHEET 1 OF 3	

1. FLUSH LINES CLEAR BEFORE CONNECTING TO STATION.
2. PLUMBER TO PROVIDE SHUT OFF VALVES FOR WATER CONNECTIONS AND P-TRAP FOR DRAIN.
3. PROVIDE 20-65 PSI WATER PRESSURE AND 4 GALLONS PER MINUTE OF FLOW FOR PROPER OPERATION OF HYDRO ASPIRATOR.
4. ELECTRICIAN TO PROVIDE LIQUID TIGHT JUNCTION BOX AND CONDUIT CONNECTIONS PER LOCAL CODES.
5. RECOMMENDED EXHAUST: 350-400 CFM PER EXHAUST GRILL WITH APPROXIMATE PRESSURE DROP OF @ 0.25 w.g.
6. EXHAUST ROUGH IN SHOWN AS UNEXPOSED CONNECTION THROUGH REAR OF UNIT.
7. EXPOSED CONNECTION OUT TOP OF SINK CAN BE PROVIDED. (PLEASE SPECIFY)

Technical drawing of a kitchen island showing top and side views with dimensions and electrical layout.

Top View Dimensions:


- Overall width: 84"
- Overall depth: 61"
- Left side depth segments: 8", 42", 34"
- Right side depth: 50"
- Internal width segments: 16", 10"

Side View Dimensions:

- Overall depth: 61"
- Left side depth segments: 8", 42", 34"
- Right side depth: 50"

Electrical Layout Details:

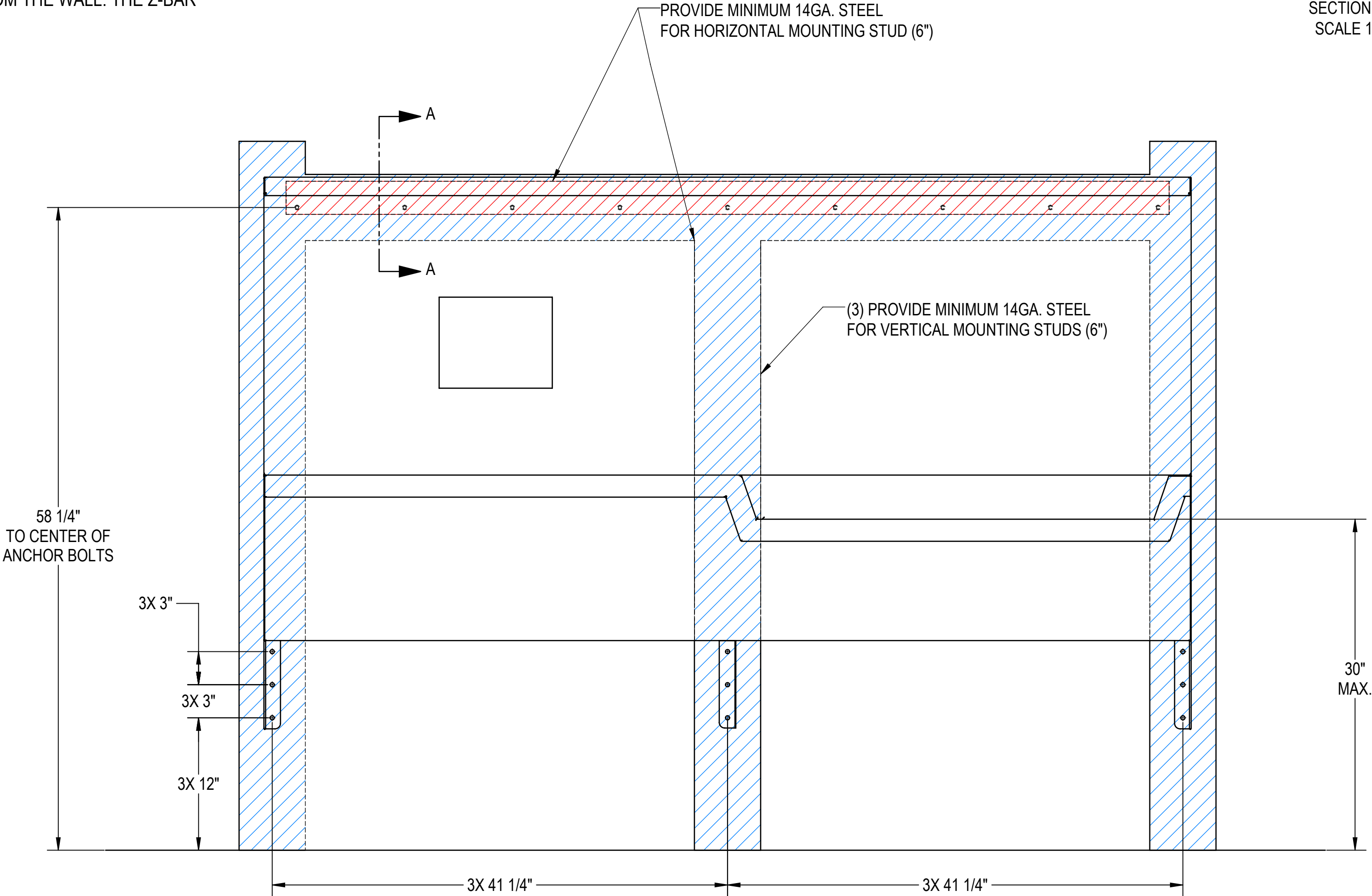
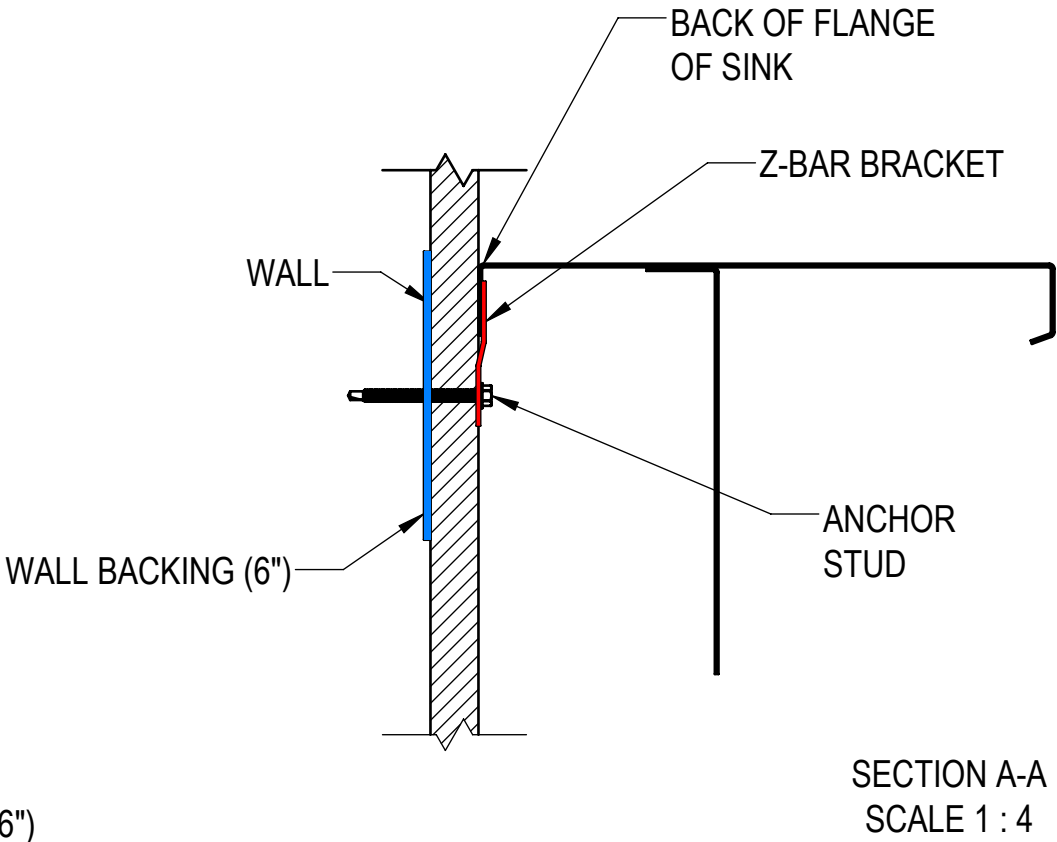
- 4" X 4" JUNCTION BOX FOR HARDWIRE CONNECTION.**
 - (1) 115V/60Hz/1 PH/15A (STATION)
 - (1) 115V/60Hz/1 PH/15A (DISPOSER)
- EXHAUST CONNECTION** (indicated by a hatched box in the top view)
- Wiring and Connections:**
 - $\phi 1/2"$ HOT
 - $\phi 1/2"$ COLD
 - $\phi 1 1/2"$ DRAIN
 - $\phi 3/4"$ COLD
 - 2X 10" (spacing)
 - 8" (spacing)
 - 21" (spacing)
 - 32 1/2" (spacing)
- FINISHED FLOOR** (indicated by a horizontal line at the bottom)

CUSTOMER	CUSTOMER NAME		APPROVAL		PROPRIETARY		 411 North Aerojet Avenue Azusa, CA 91702 tel: (800) 410-0100 (626) 334-1471 fax: (626) 334-1704 www.mortechmfg.com		
PROJECT	PROJECT NAME				THIS DOCUMENT AND THE DATE DISCLOSED HEREIN AND HEREWITH IS NOT TO BE REPRODUCED, USED, OR OTHERWISE DISCLOSED IN WHOLE OR IN PART TO ANYONE WITHOUT WRITTEN AUTHORIZATION FROM MORTECH MFG.		TITLE		
		DO NOT SCALE DRAWING			APPROVALS	DATE	MODEL 1036-8 WALL MOUNT AUTOPSY STATION, RIGHT SINK ROUGH-IN		
		MATERIAL 304 STAINLESS STEEL			DRAWN BY BRIAN W.	03/26/19	SIZE C		
		FINISH #4 SATIN		CHECKED BY		DWG NO.		REV.	
		APPROVED BY				1036-8AP		A	
		SIGNATURE		DATE		SCALE 1:8		NEXT ASSY.	
						SHEET 2		OF 3	

WALL MOUNTING NOTES:

1. Z-BAR SHIPPED WITHOUT MOUNTING HOLES FOR ADOPTION TO FIELD CONDITIONS. HOLES TO BE DRILLED BY INSTALLER.
2. INSTALL MINIMUM (8) UPPER ANCHORS..
FIRST HOLE: 1" IN FROM SIDE OF Z-BAR.
Z-BAR LENGTH: 80" LONG.
ADDITIONAL ANCHORS CAN BE ADDED AS NEEDED.
3. USE MINIMUM 1/4" TEK SCREWS 2 3/4" LONG. ADJUST LENGTH PER WALL THICKNESS.
4. ANCHORS USED MUST BE FLUSH TO Z-BAR AS MUCH AS POSSIBLE. THEY MUST NOT INTERFERE WITH PLUMBING BEHIND WALL.
5. THE LOWER ANCHORS ARE USED TO KEEP THE BOTTOM OF THE SINK FROM PULLING AWAY FROM THE WALL. THE Z-BAR HOLDS THE WEIGHT OF THE SINK.

6. USE MINIMUM OF (2) 1/4" TEK SCREWS PER LOWER GUSSET
7. INSTALLATION IS BASED ON ROUGH-IN MOUNTING DETAIL PROVIDED.
- SUPPORT LOCATION FOR SINK MOUNTING ONLY.
ADDITIONAL WALL SUPPORTS MAY BE REQUIRED.



CUSTOMER CUSTOMER NAME		APPROVAL		PROPRIETARY THIS DOCUMENT AND THE DATE DISCLOSED HEREIN AND HEREWITH IS NOT TO BE REPRODUCED, USED, OR OTHERWISE DISCLOSED IN WHOLE OR IN PART TO ANYONE WITHOUT WRITTEN AUTHORIZATION FROM MORTECH MFG.			MOPEC GROUP 411 North Aerojet Avenue Azusa, CA 91702 tel: (800) 410-0100 (626) 334-1471 fax: (626) 334-1704 www.mortechmfg.com					
PROJECT PROJECT NAME		SIGNATURE		DATE		DO NOT SCALE DRAWING		APPROVALS		DATE		
						MATERIAL 304 STAINLESS STEEL		DRAWN BY BRIAN W.		03/26/19		
						FINISH #4 SATIN		CHECKED BY				
								APPROVED BY				
TITLE MODEL 1036-8 WALL MOUNT AUTOPSY STATION, RIGHT SINK WALL-MOUNTING							SIZE C		DWG NO. 1036-8AP		REV. A	
SCALE 1:8							NEXT ASSY.		SHEET 3		OF 3	