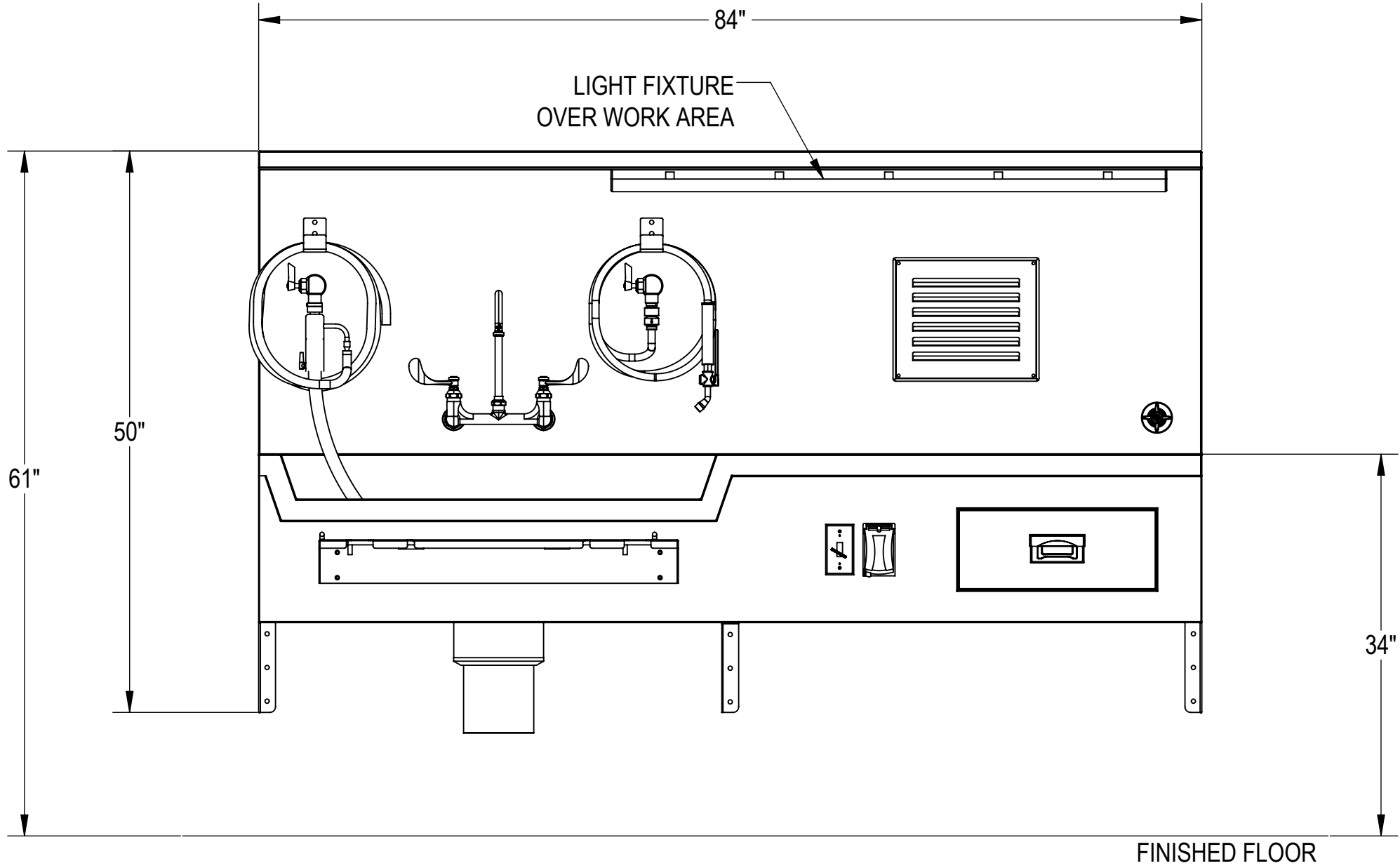
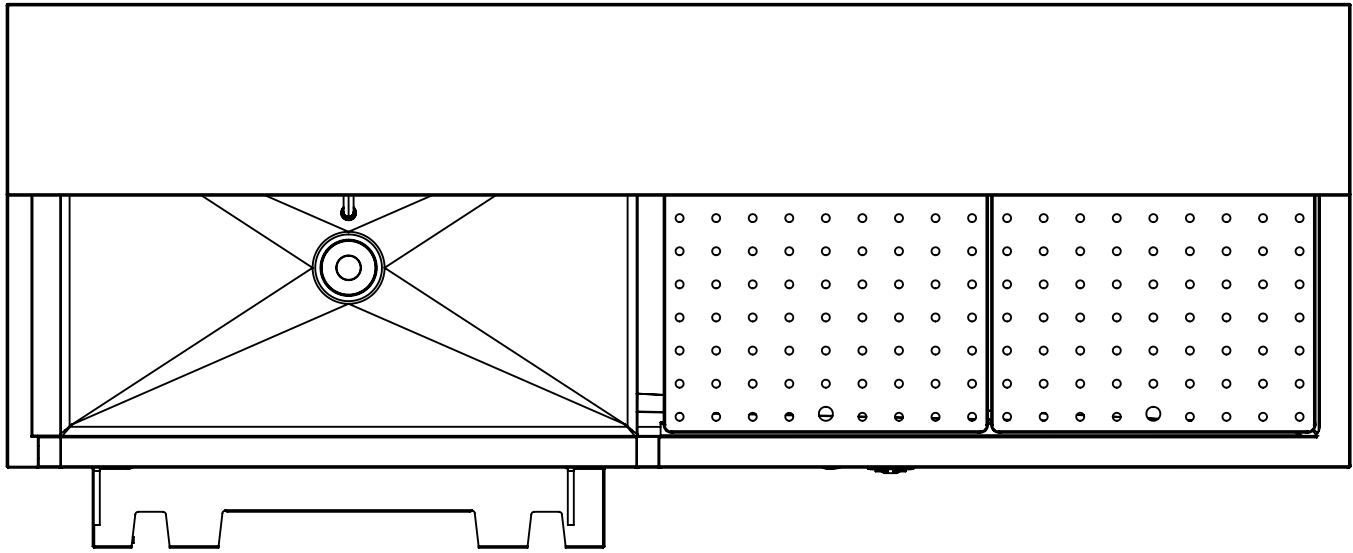
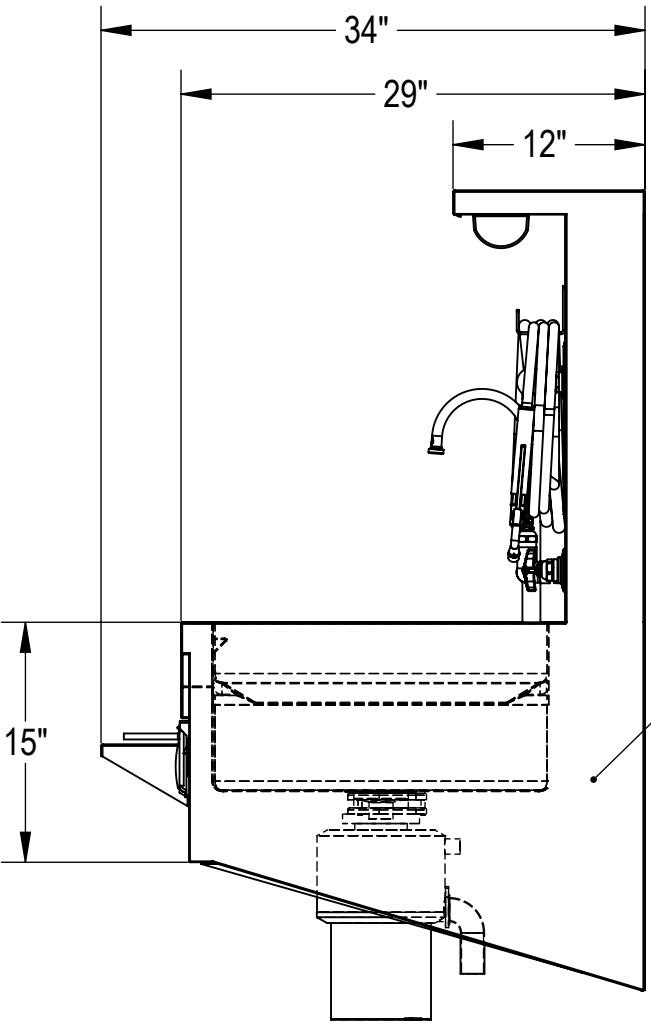
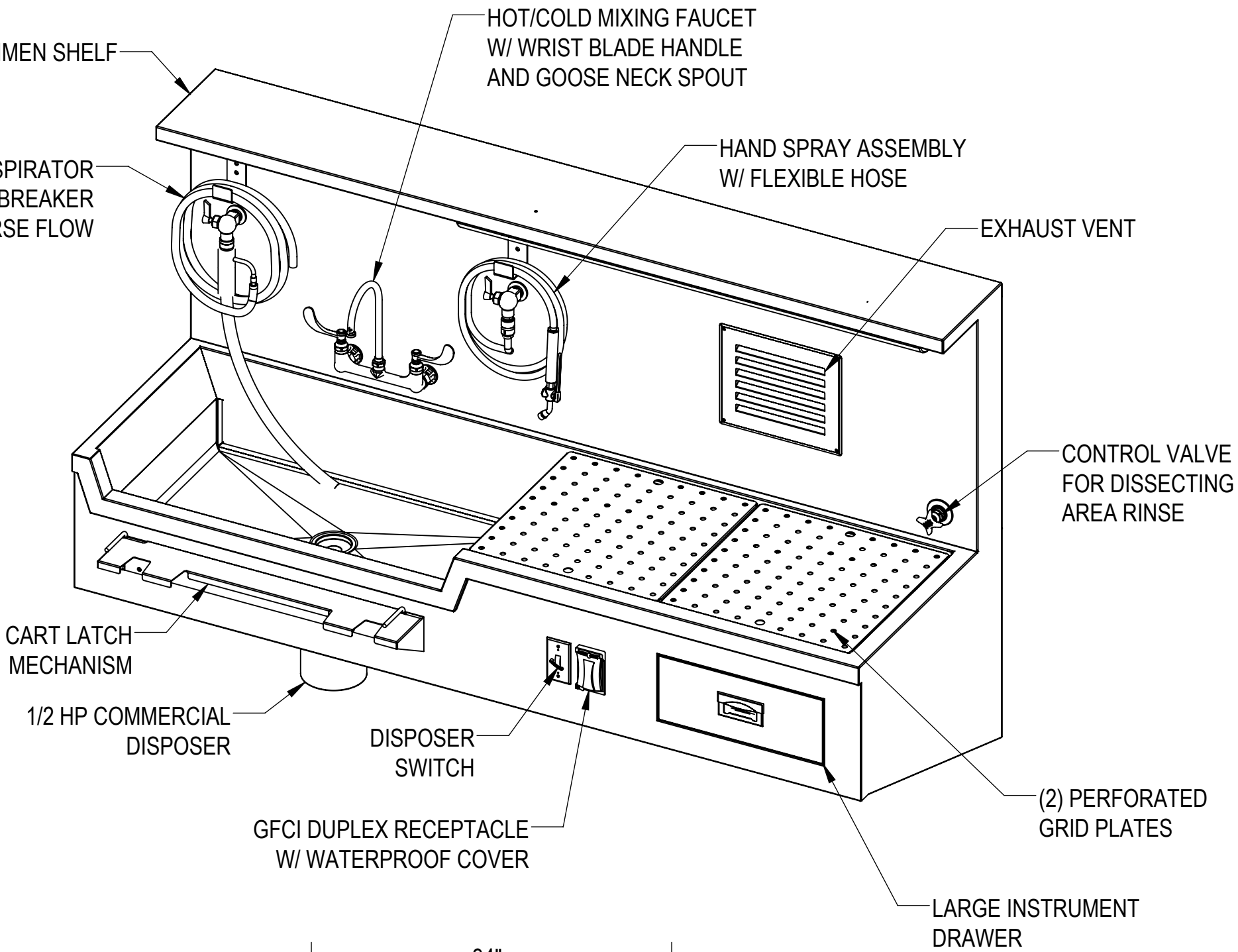


NOTES: UNLESS OTHERWISE SPECIFIED

1. APPLICABLE STANDARDS AND SPECIFICATIONS;
ASMEY14.5-2009, DIMENSIONING AND TOLERANCING
ASME Y14.5-2007, ABBREVIATIONS



FINISHED FLOOR



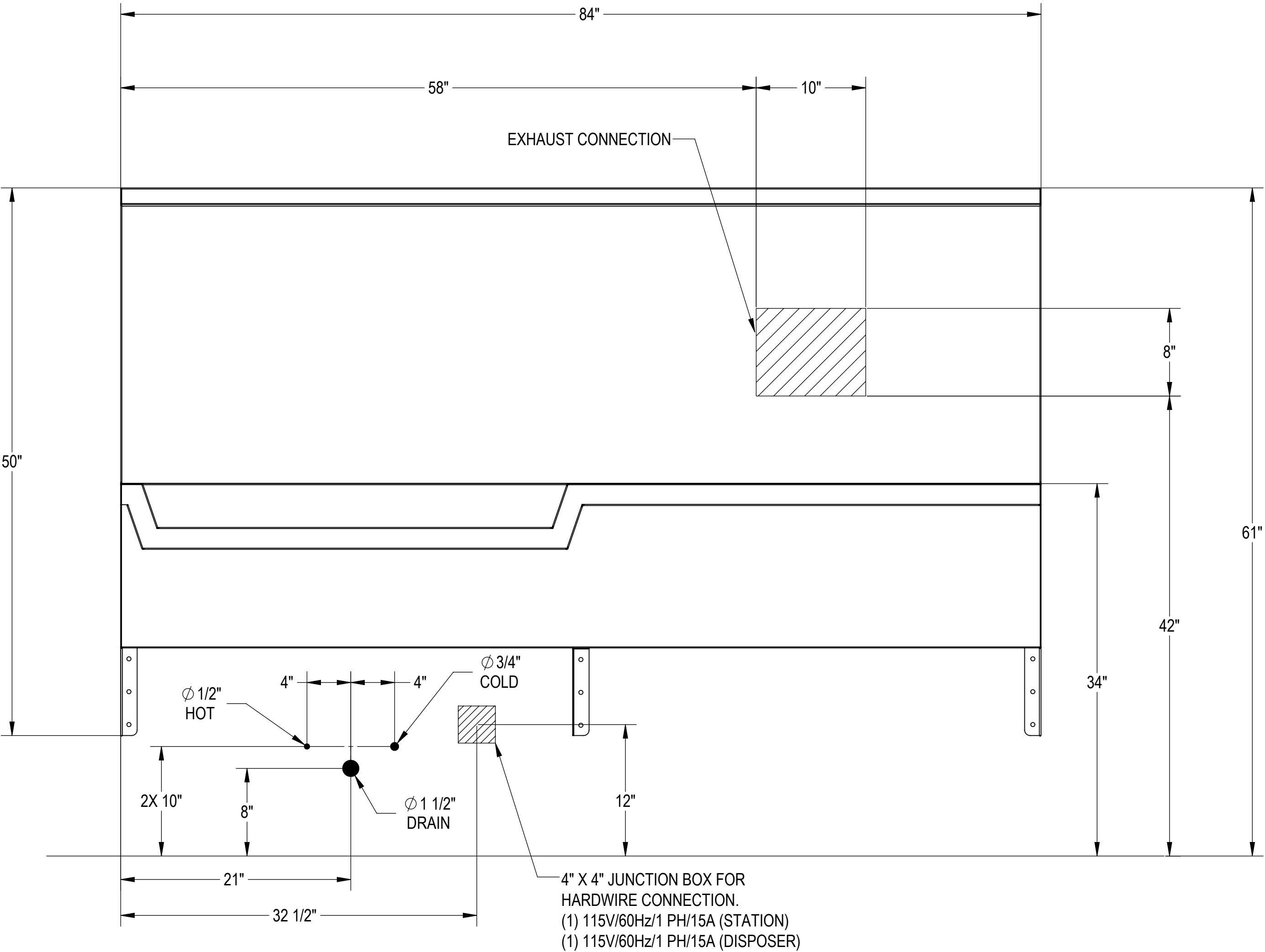
FINISHED FLOOR

CUSTOMER		APPROVAL		PROPRIETARY		MOPEC GROUP		411 North Aerojet Avenue Azusa, CA 91702 tel: (800) 410-0100 (626) 334-1471 fax: (626) 334-1704 www.mortechmfg.com	
PROJECT		SIGNATURE		DATE		THIS DOCUMENT AND THE DATE DISCLOSED HEREIN AND HERewith IS NOT TO BE REPRODUCED, USED, OR OTHERWISE DISCLOSED IN WHOLE OR IN PART TO ANYONE WITHOUT WRITTEN AUTHORIZATION FROM MORTECH MFG.		ISO 9001:2015 CERTIFIED COMPANY	
CUSTOMER NAME		DATE		APPROVALS		DO NOT SCALE DRAWING		MODEL 1036-7	
LINE 1		DATE		F. YANEZ		MATERIAL		WALL MOUNT AUTOPSY STATION, LEFT SINK	
LINE 2		DATE		APPROVED BY		304 STAINLESS STEEL		1036-7AP	
		DATE				#4 SATIN		X01	
		DATE						SCALE 1:12	
		DATE						NEXT ASSY.	
		DATE						SHEET 1 OF 3	

UTILITY REQUIREMENT NOTES:

1. FLUSH LINES CLEAR BEFORE CONNECTING TO STATION.
2. PLUMBER TO PROVIDE SHUT-OFF VALVES FOR WATER CONNECTIONS AND P-TRAP FOR DRAIN.
3. PROVIDE 60-65 PSI WATER PRESSURE AND 4 GALLONS PER MINUTE OF FLOW FOR PROPER OPERATION OF HYDRO ASPIRATOR.
4. ELECTRICIAN TO PROVIDE LIQUID TIGHT JUNCTION BOX AND CONDUIT CONNECTIONS PER LOCAL CODES.
5. RECOMMENDED EXHAUST: 600-650cfm PER EXHAUST GRILL WITH APPROXIMATE PRESSURE DROP OF @ 0.25w.g.
6. EXHAUST ROUGH-IN SHOWN AS UNEXPOSED CONNECTION THROUGH REAR OF UNIT.
7. EXPOSED CONNECTION OUT TOP OF SINK CAN BE PROVIDED. (PLEASE SPECIFY)

BACK FLOW PREVENTION PROVIDED REDUCED PRESSURE ZONE ASSEMBLY WITH AIR GAP. PROJECT PLUMBER TO CONNECT TO BUILDING DRAIN.



CUSTOMER		APPROVAL		PROPRIETARY			MOPEC GROUP		
PROJECT				THIS DOCUMENT AND THE DATE DISCLOSED HEREIN AND HEREWITH IS NOT TO BE REPRODUCED, USED, OR OTHERWISE DISCLOSED IN WHOLE OR IN PART TO ANYONE WITHOUT WRITTEN AUTHORIZATION FROM MORTECH MFG.			411 North Aerojet Avenue Azusa, CA 91702 tel: (800) 410-0100 (626) 334-1471 fax: (626) 334-1704 www.mortechmfg.com		
CUSTOMER NAME				DO NOT SCALE DRAWING			TITLE		
LINE 1				MATERIAL			APPROVALS		
LINE 2				304 STAINLESS STEEL			DRAWN BY		
				FINISH			CHECKED BY		
				#4 SATIN			APPROVED BY		
							DATE		
							SIZE		
							C		
							DWG NO.		
							1036-7AP		
							REV.		
							X01		
							SCALE		
							1:8		
							NEXT ASSY.		
							SHEET		
							2 OF 3		

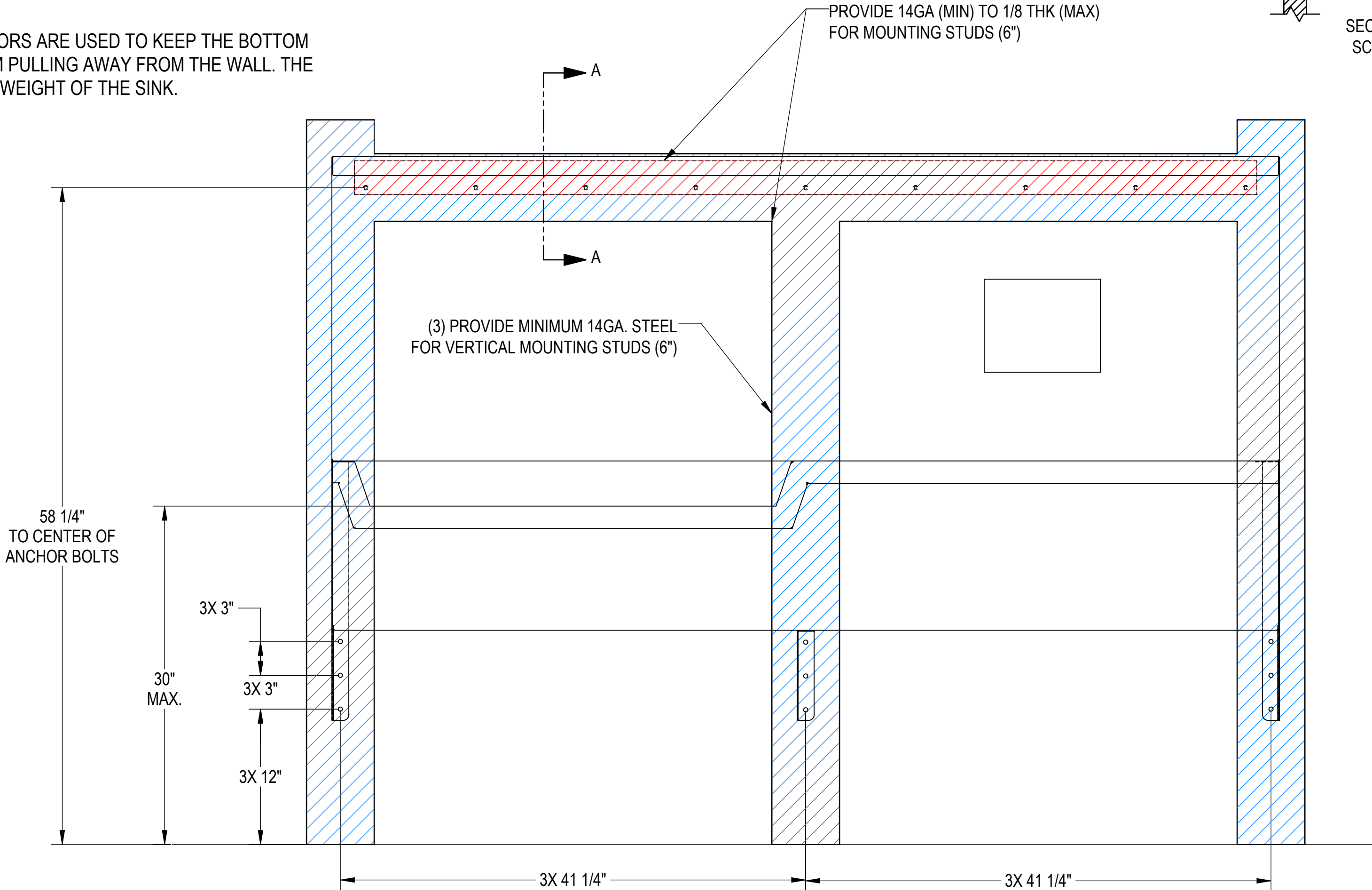
WALL MOUNTING NOTES:


6. USE MINIMUM OF (2) 1/4" TEK SCREWS PER LOWER GUSSET.
7. INSTALLATION IS BASED ON ROUGH-IN MOUNTING DETAIL PROVIDED.

Diagram illustrating the cross-section (SECTION A-A) of a wall and floor assembly, showing the connection of a sink flange to the wall structure. The components labeled are:

- WALL
- BACK OF FLANGE OF SINK
- Z-BAR BRACKET
- ANCHOR STUD
- WALL BACKING (6")

SECTION A-A
SCALE 1 : 4



CUSTOMER			APPROVAL		PROPRIETARY THIS DOCUMENT AND THE DATE DISCLOSED HEREIN AND HEREWIT IS NOT TO BE REPRODUCED, USED, OR OTHERWISE DISCLOSED IN WHOLE OR IN PART TO ANYONE WITHOUT WRITTEN AUTHORIZATION FROM MORTECH MFG.		 <div style="float: right;"> 411 North Aerojet Avenue Azusa, CA 91702 tel: (800) 410-0100 (626) 334-1471 fax: (626) 334-1704 www.mortechmfg.com </div>					
PROJECT							ISO 9001:2015 CERTIFIED COMPANY					
LINE 1 LINE 2							TITLE					
							MODEL 1036-7					
							WALL MOUNT AUTOPSY STATION, LEFT SINK					
							WALL-MOUNTING					
			SIGNATURE	DATE			SIZE	DWG NO.				REV.
							C		1036-7AP			X01
							SCALE	1:8	NEXT ASSY.	SHEET	3	OF 3