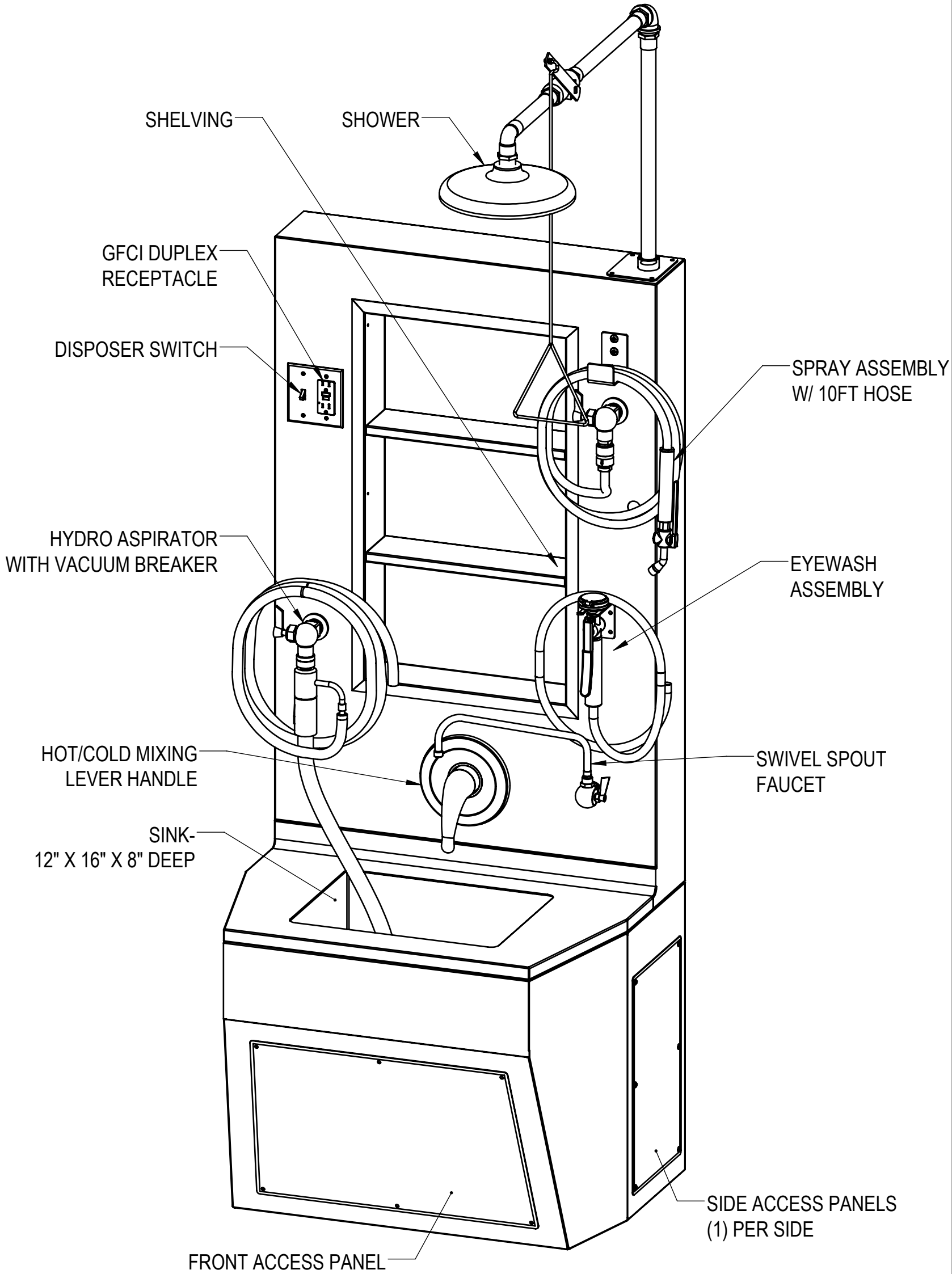
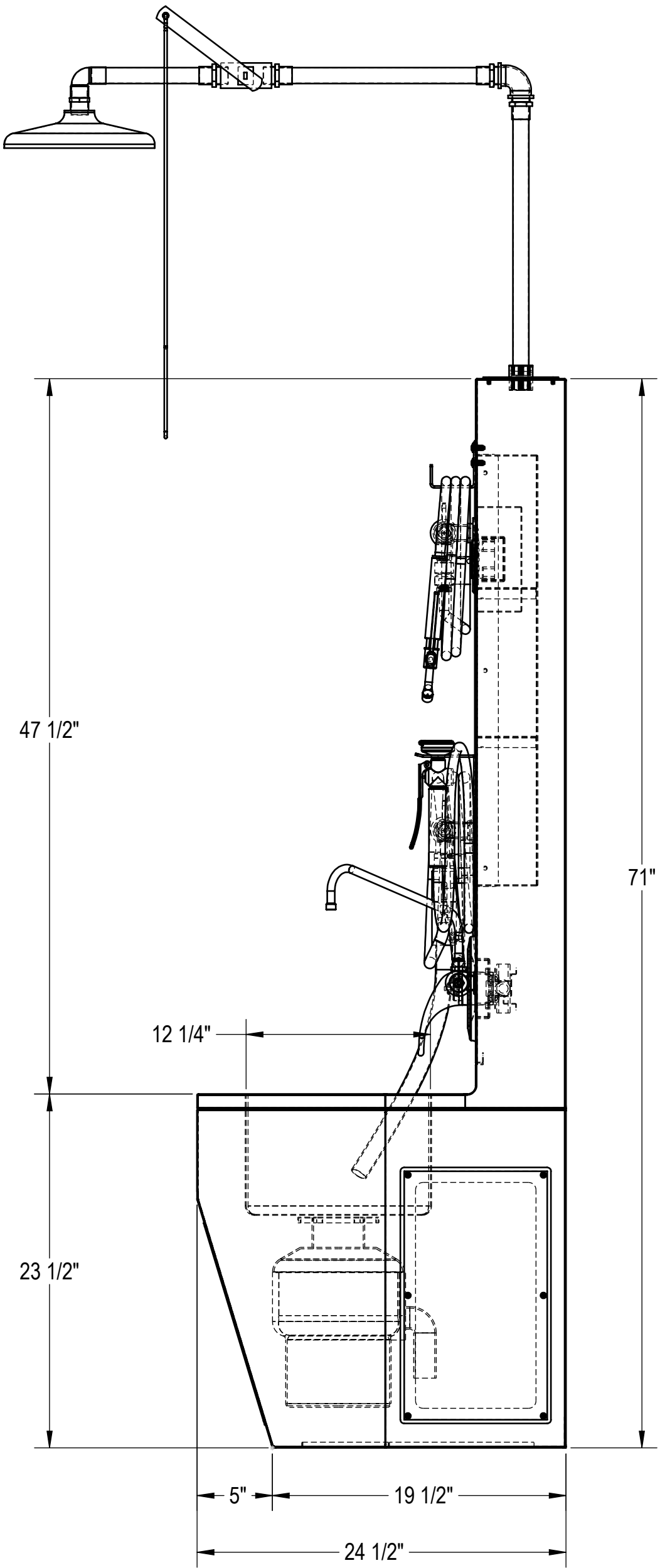
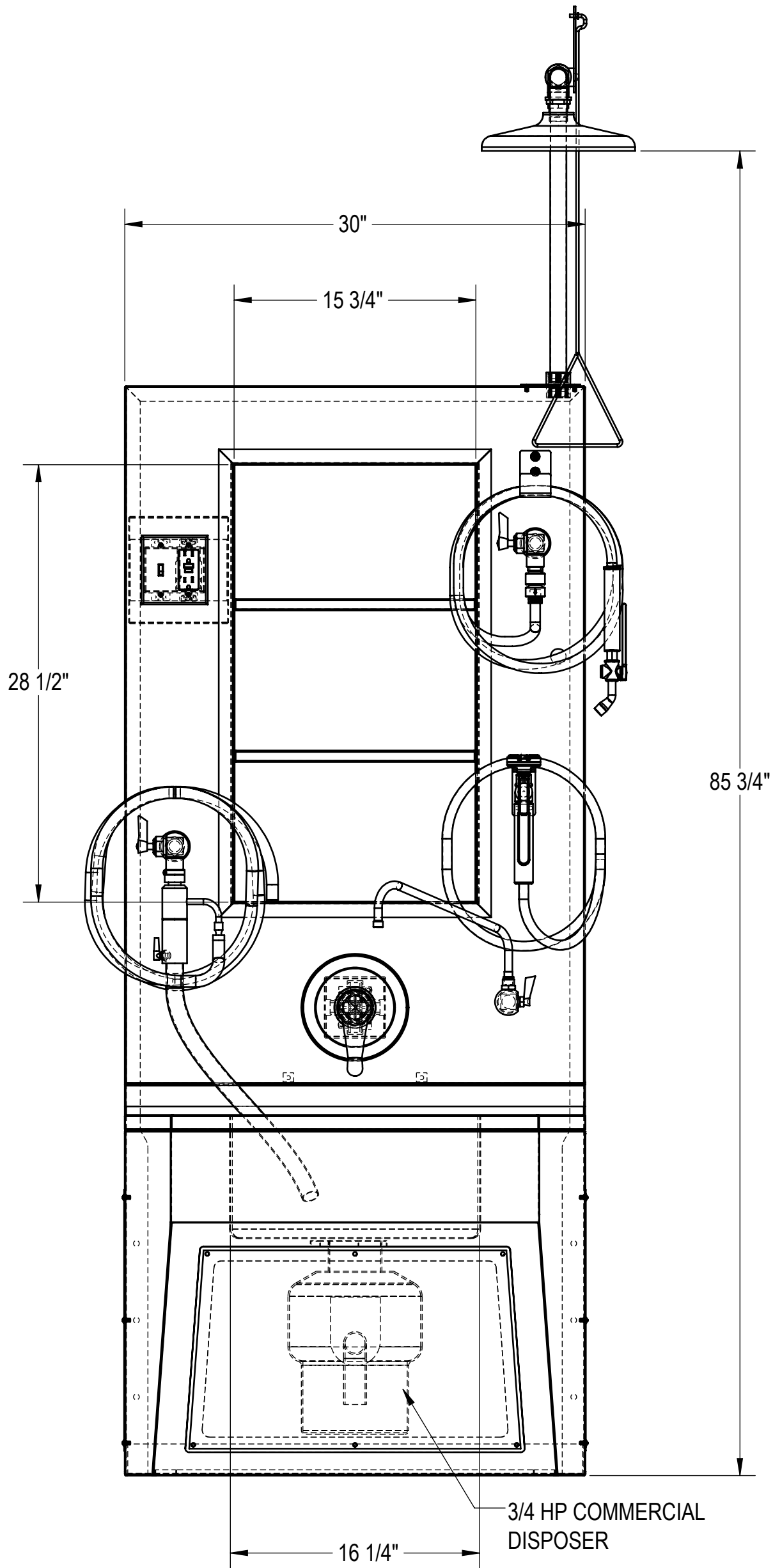


NOTES: UNLESS OTHERWISE SPECIFIED

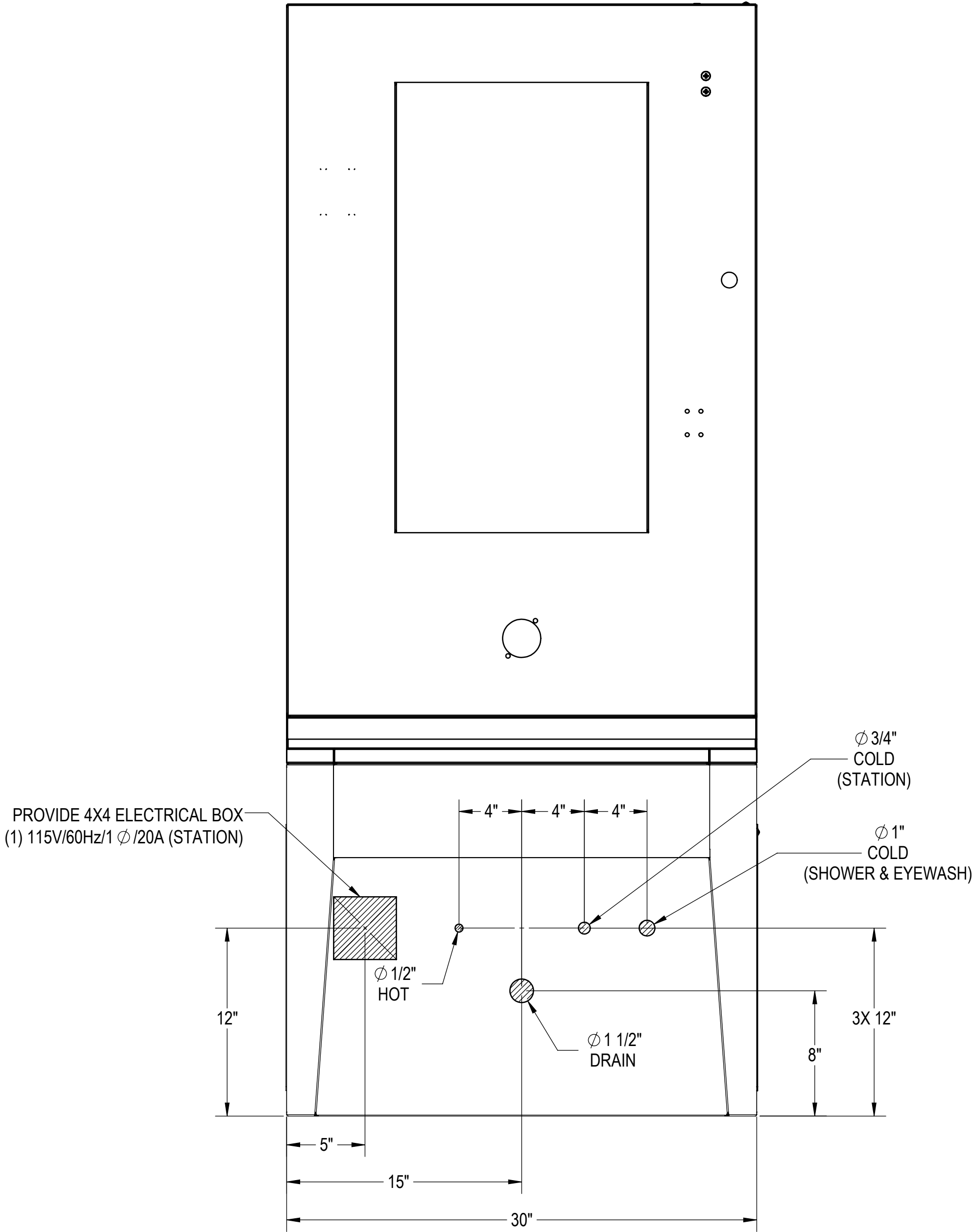
1. APPLICABLE STANDARDS AND SPECIFICATIONS;  
ANSI Y14.5M, DIMENSIONS AND TOLERANCES  
ANSI Y1.1, ABBREVIATIONS



CUSTOMER		APPROVAL		PROPRIETARY			MOPEC GROUP			411 North Aerojet Avenue Azusa, CA 91702 tel: (800) 410-0100 (626) 334-1471 fax: (626) 334-1704 www.mortechmfg.com		
PROJECT				THIS DOCUMENT AND THE DATE DISCLOSED HEREIN AND HEREWITH IS NOT TO BE REPRODUCED, USED, OR OTHERWISE DISCLOSED IN WHOLE OR IN PART TO ANYONE WITHOUT WRITTEN AUTHORIZATION FROM MORTECH MFG.			TITLE			MODEL 1036-2SE		
				DO NOT SCALE DRAWING			APPROVALS			WALL-MOUNTED SERVICE STATION		
				MATERIAL			DRAWN BY			SIZE		
				304 STAINLESS STEEL			ELISEO S.			DWG NO.		
				FINISH			CHECKED BY			SCALE		
				#4			APPROVED BY			1:8		
										SHEET 1 OF 3		
										REV. X01		

NOTES: UNLESS OTHERWISE SPECIFIED

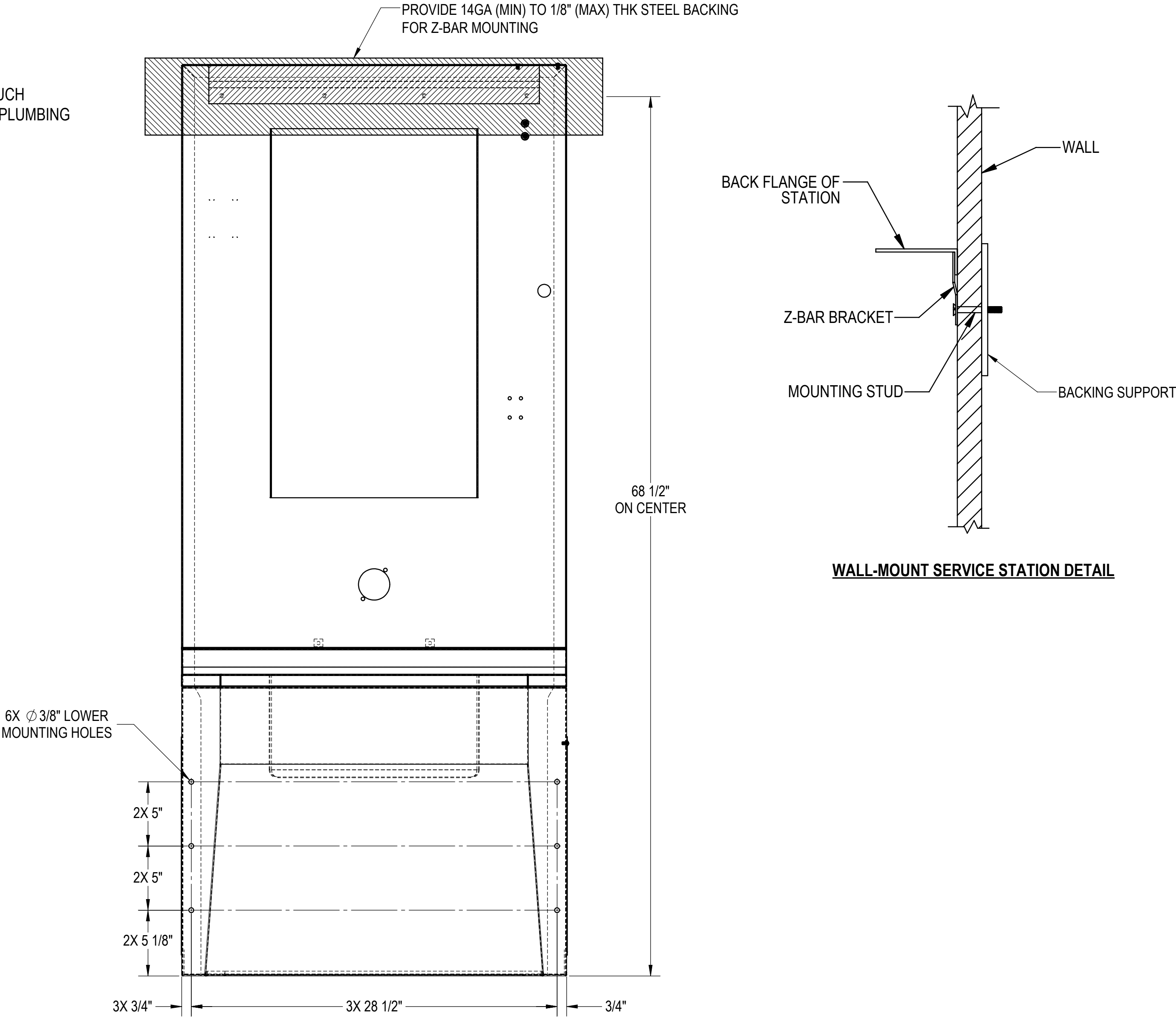
1. FLUSH LINES CLEAR BEFORE CONNECTING TO STATION.
2. PLUMBER TO PROVIDE SHUT-OFF VALVES FOR WATER CONNECTIONS AND P-TRAP FOR DRAIN.
3. PROVIDE 60-65 PSI WATER PRESSURE AND 4 GALLONS PER MINUTE OF FLOW FOR PROPER OPERATION OF HYDRO ASPIRATOR.
4. ELECTRICIAN TO PROVIDE LIQUID TIGHT JUNCTION BOX AND CONDUIT CONNECTIONS PER LOCAL CODES.



CUSTOMER	APPROVAL		PROPRIETARY THIS DOCUMENT AND THE DATE DISCLOSED HEREIN AND HERewith IS NOT TO BE REPRODUCED, USED, OR OTHERWISE DISCLOSED IN WHOLE OR IN PART TO ANYONE WITHOUT WRITTEN AUTHORIZATION FROM MORTECH MFG.			MOPEC GROUP 411 North Aerojet Avenue Azusa, CA 91702 tel: (800) 410-0100 (626) 334-1471 fax: (626) 334-1704 www.mortechmfg.com
PROJECT	SIGNATURE	DATE	DO NOT SCALE DRAWING	APPROVALS	DATE	TITLE
			MATERIAL	DRAWN BY	01/23/17	MODEL 1036-2SE WALL-MOUNTED SERVICE STATION ROUGH-INS
			304 STAINLESS STEEL	ELISEO S.		
			FINISH	CHECKED BY		
			#4	APPROVED BY		SIZE C DWG NO. 1036-2SE-AP REV. X01
			SCALE 1:6			SHEET 2 OF 3

NOTES: UNLESS OTHERWISE SPECIFIED

1. Z-BAR SHIPPED WITHOUT MOUNTING HOLES FOR ADOPTION TO FIELD CONDITIONS. HOLES TO BE DRILLED BY INSTALLER.
2. INSTALL ANCHORS AS NEEDED.
3. ANCHORS USED MUST BE FLUSH TO Z-BAR AS MUCH AS POSSIBLE. THEY MUST NOT INTERFERE WITH PLUMBING BEHIND WALL.



CUSTOMER	APPROVAL		<div>PROPRIETARY</div> <div>THIS DOCUMENT AND THE DATE DISCLOSED HEREIN AND HEREWIT IS NOT TO BE REPRODUCED, USED, OR OTHERWISE DISCLOSED IN WHOLE OR IN PART TO ANYONE WITHOUT WRITTEN AUTHORIZATION FROM MORTECH MFG.</div>			<div><div><div><div>MOPEC</div><div>GROUP</div></div><div><div>Mopec</div><div>MORTECH</div><div><small>MANUFACTURING</small></div></div></div><div>411 North Aerojet Avenue Azusa, CA 91702 tel: (800) 410-0100 (626) 334-1471 fax: (626) 334-1704 <a href="http://www.mortechmfg.com">www.mortechmfg.com</a></div></div>					
PROJECT						TITLE			MODEL 1036-2SE WALL-MOUNTED SERVICE STATION WALL-MOUNTING		
			DO NOT SCALE DRAWING			APPROVALS		DATE			
			MATERIAL		DRAWN BY		01/23/17				
			304 STAINLESS STEEL		ELISEO S.						
					CHECKED BY						
	SIGNATURE	DATE	FINISH		APPROVED BY		SCALE		DWG NO.	REV.	X01
			#4				1:6		1036-2SE-AP		
									SHEET	3	OF 3