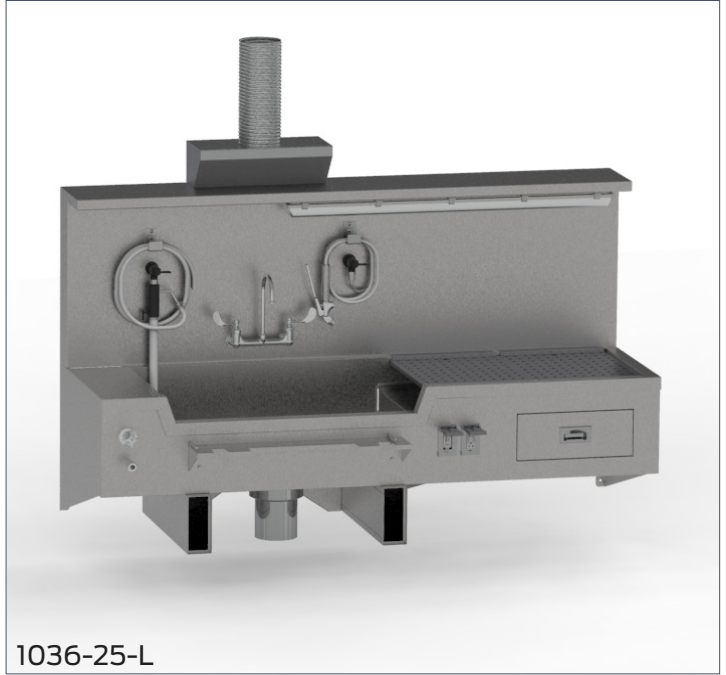
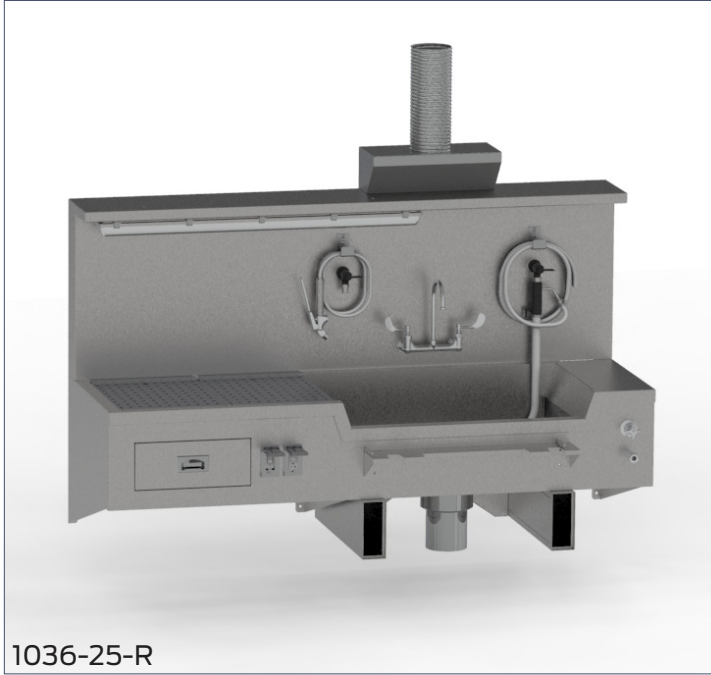


Wall Mount Embalming Station

Mopec's Autopsy Stations are a durable, stainless steel workstation designed for professional pathology and mortuary environments. It offers a spacious, easy-to-clean work surface with efficient drainage, integrated utilities, and features that support smooth workflow and sanitation. With built-in lighting, storage, waste handling, and compatibility with Mopec carts, this line is reliable for everyday use in demanding settings.



SPECIFICATIONS

Construction

- TÜV Certified
- Hot / cold water fixture with gooseneck faucet and wrist blade handles
- Vent system for connection to embalming tables
- Dissecting area rinse assembly with cold water valve
- Heavy-duty commercial waste disposer, 1/2 HP
- Deluxe aspirator with reverse flow to relieve suction clogging
- GFCI duplex receptacles with waterproof cover
- Flexible 10 ft. spray hose, with cold water control valve and nozzle
- Full length specimen shelf (12" W)
- Large instrument drawer
- Light fixtures over work area
- Cart-to-sink locking mechanism

Utilities / Power

- Water: Provide 60–65 PSI water pressure and 4 GPM of flow.
- Refer to rough-in drawings for plumbing connection sizes
- Exhaust: 400–450 CFM at 0.25 W.G.
- Electrical: Provide (2) circuits in 4" X 4" electrical box:
 - (1) 115V/60Hz / 1Ph / 15A (for station)
 - (1) 115V/60Hz / 1Ph / 15A (for disposal)

Materials

- 304 Stainless steel with No.4 finish

Dimensions

- 84" L x 34" W x 61" H (excluding exhaust connection)
- Sink: 34.8" L X 19.8" W X 5.8" H

Variations

Model No.	Description	Dimensions
1036-25-R	Wall Mount Embalming Station, Right Sink	84"L x 34"W x 61"H
1036-25-L	Wall Mount Embalming Station, Left Sink	84"L x 34"W x 61"H

MOPEC
GROUP

mopec
ELEVATING PATHOLOGY

MORTECH
MANUFACTURING

www.mopecgroup.com

800.362.8491

800 Tech Row, Madison Heights, MI