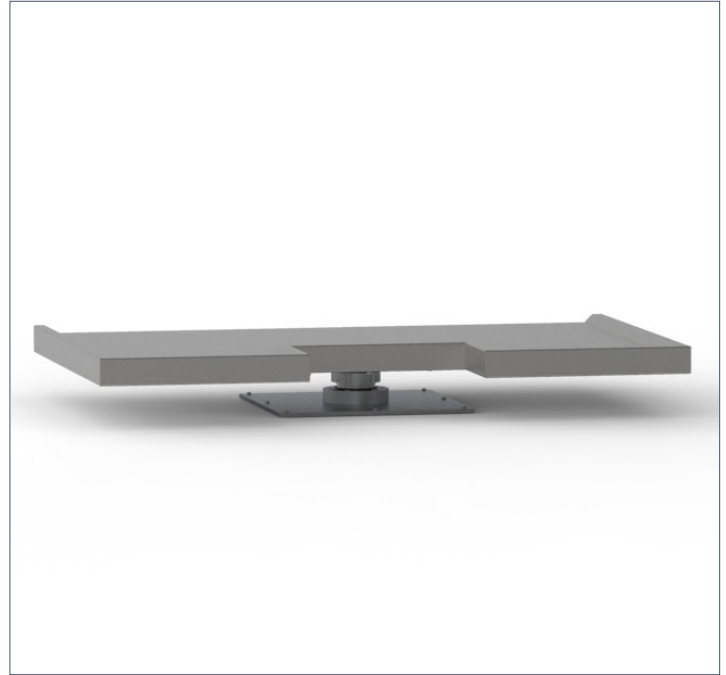
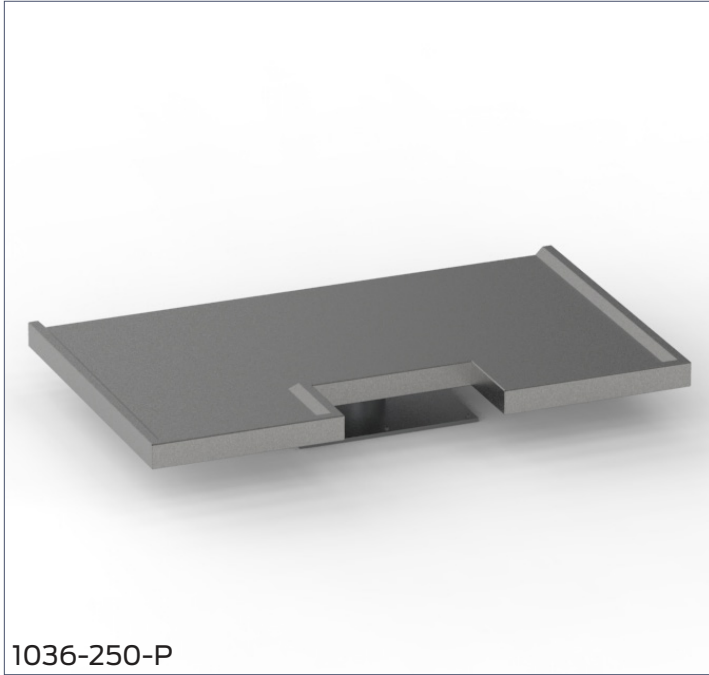


Large Hydraulic Necropsy Table

Mopec's Large Hydraulic Necropsy Table is a heavy-duty stainless steel dissection table designed for large animal necropsy work. It features a U-shaped top with an electrically hydraulic powered lift system for easy height adjustment, robust construction to support substantial loads, up to 4,000 lbs, and integrated drainage for efficient cleanup. Built for labs and veterinary environments, this table helps improve workflow during necropsy procedures.



1036-250-P

SPECIFICATIONS

Construction

- U-shaped table designed for use as a large animal necropsy table
- In-ground piston lifting mechanism
- Drain opening located on the back edge of the table (the back edge is the side opposite the "U" shaped indentation)
- Non-rotating piston/rod assembly and does not require additional support to stabilize the piston
- Pendant-mounted remote control for table elevation

Materials

- Tabletop: 304 stainless steel, 11 GA
- Lower enclosure panels and access panels: 304 stainless steel, 18 GA
- Table and Cylinder Mounting Plates: 304 stainless steel, 3/4" thick
- Internal frame and base: 304 stainless steel

Capacity

- 4,000 lbs

Dimensions

- 108" W x 66" D x 12.9" (min.) – 56.9" (max) H

Utilities / Power

- Provide electrical box with disconnect
- 208V / 60 Hz / 3 Ph / 20A
- Provide 3/4" conduit for line coming from reservoir to remote ceiling

MOPEC
GROUP

Mopec
ELEVATING PATHOLOGY

MORTECH
MANUFACTURING

www.mopecgroup.com

800.362.8491

800 Tech Row, Madison Heights, MI