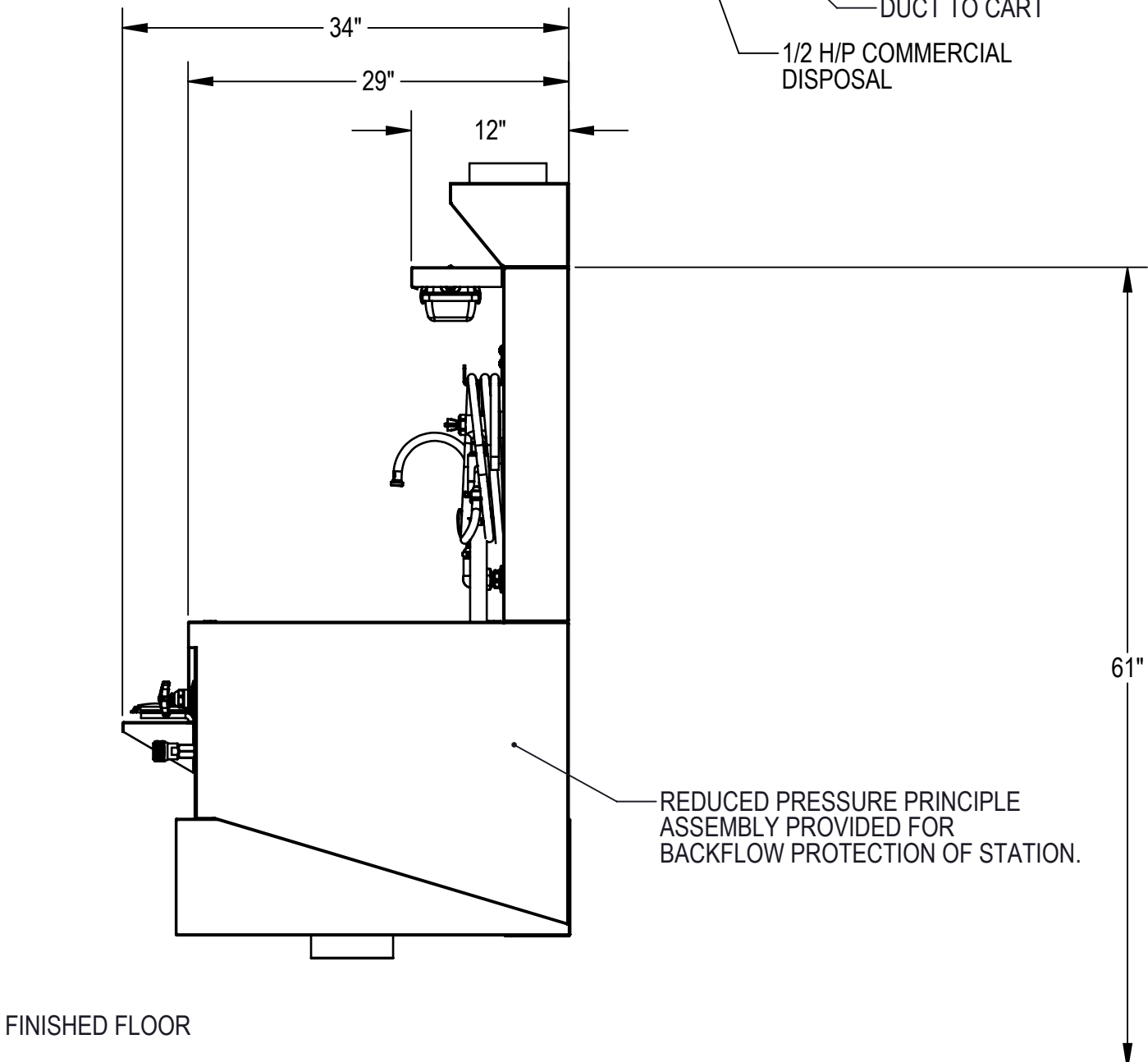
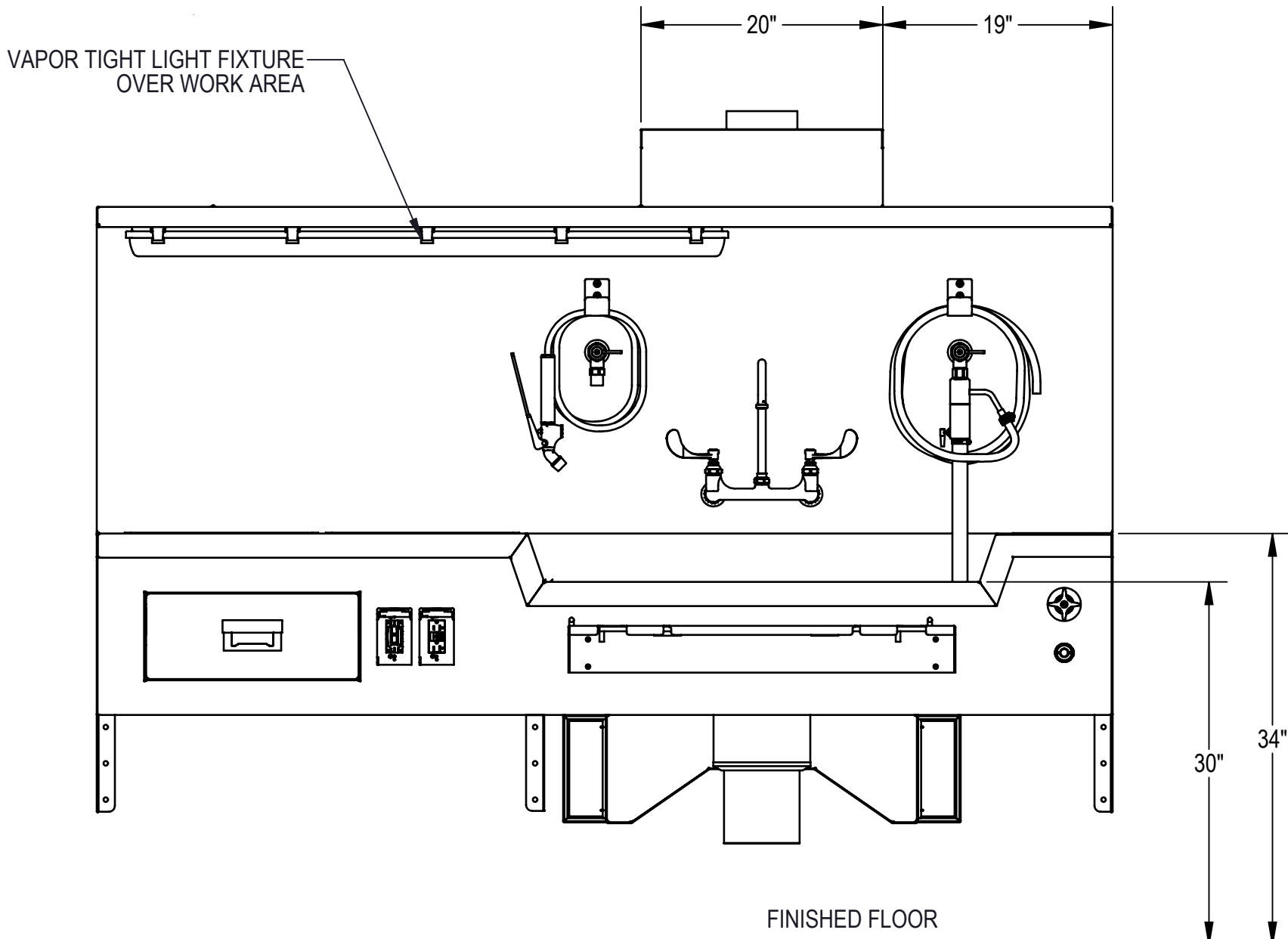
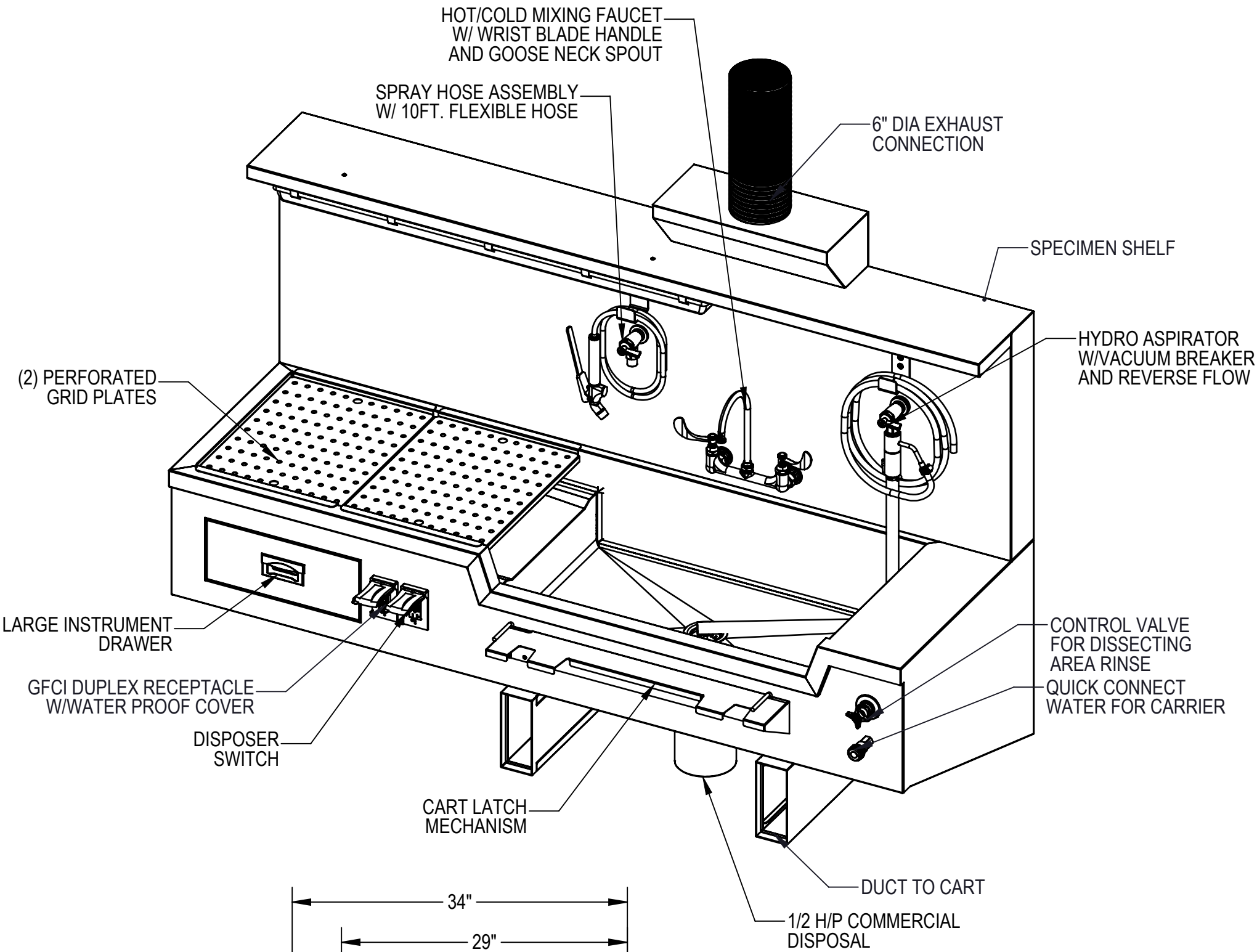
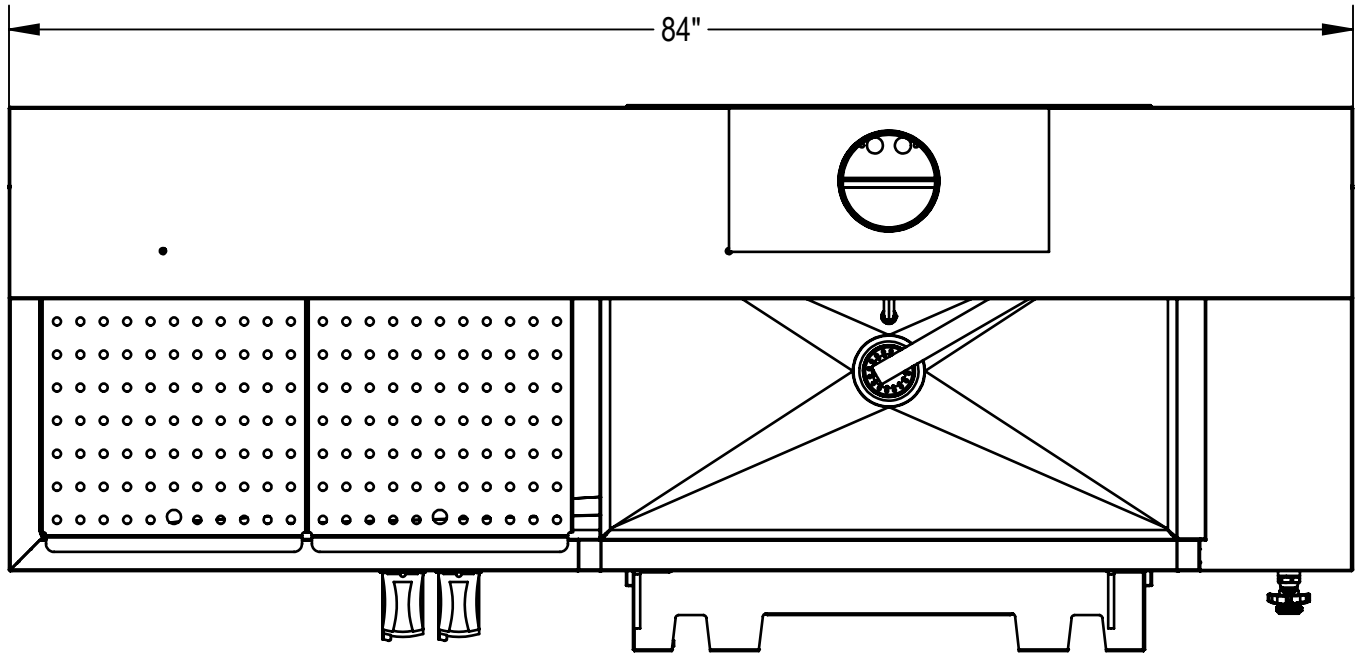


NOTES: UNLESS OTHERWISE SPECIFIED

1. APPLICABLE STANDARDS AND SPECIFICATIONS;  
ANSI Y14.5M, DIMENSIONS AND TOLERANCES  
ANSI Y1.1, ABBREVIATIONS

REVISIONS				
REV.	DCN#	DESCRIPTION	DATE	CHANGED/APPROVED
X01		PRELIMINARY RELEASE	9/19/2019	FY



FINISHED FLOOR

FINISHED FLOOR

CUSTOMER

APPROVAL

PROJECT

SIGNATURE

DATE

PROPRIETARY

THIS DOCUMENT AND THE DATE DISCLOSED HEREIN  
AND HERewith IS NOT TO BE REPRODUCED, USED, OR OTHERWISE  
DISCLOSED IN WHOLE OR IN PART TO ANYONE WITHOUT WRITTEN  
AUTHORIZATION FROM MORTECH MFG.

DO NOT SCALE DRAWING

APPROVALS

DATE

MATERIAL

DRAWN BY

03/22/19

CHECKED BY

BRIAN W.

FINISH

APPROVED BY

304 STAINLESS STEEL

#4 SATIN

**MOPEC**  
GROUP  
MORTECH MANUFACTURING

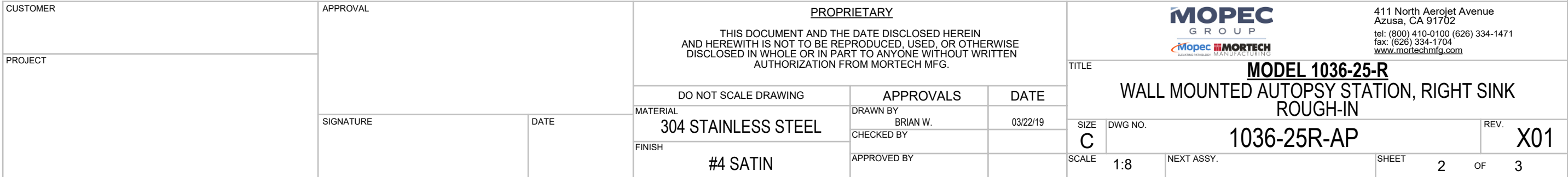
411 North Aerojet Avenue  
Azusa, CA 91702  
tel: (800) 410-0100 (626) 334-1471  
fax: (626) 334-1704  
www.mortechmfg.com

TITLE  
**MODEL 1036-25-R**  
**WALL MOUNTED AUTOPSY STATION, RIGHT SINK**

SIZE  
**C**  
DWG NO.  
**1036-25R-AP**  
REV.  
**X01**

SCALE  
1:12  
NEXT ASSY.  
SHEET  
1  
OF  
3

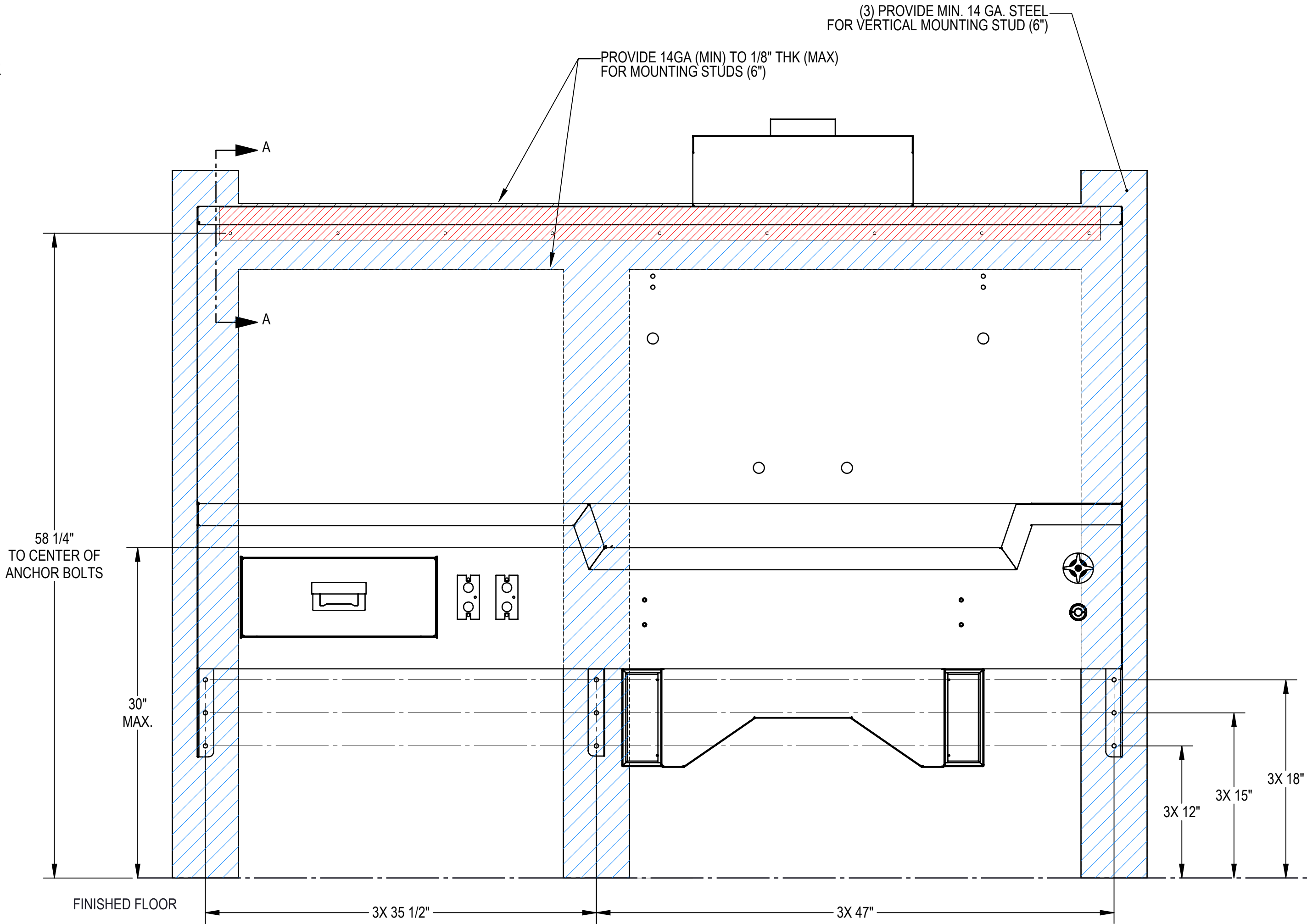
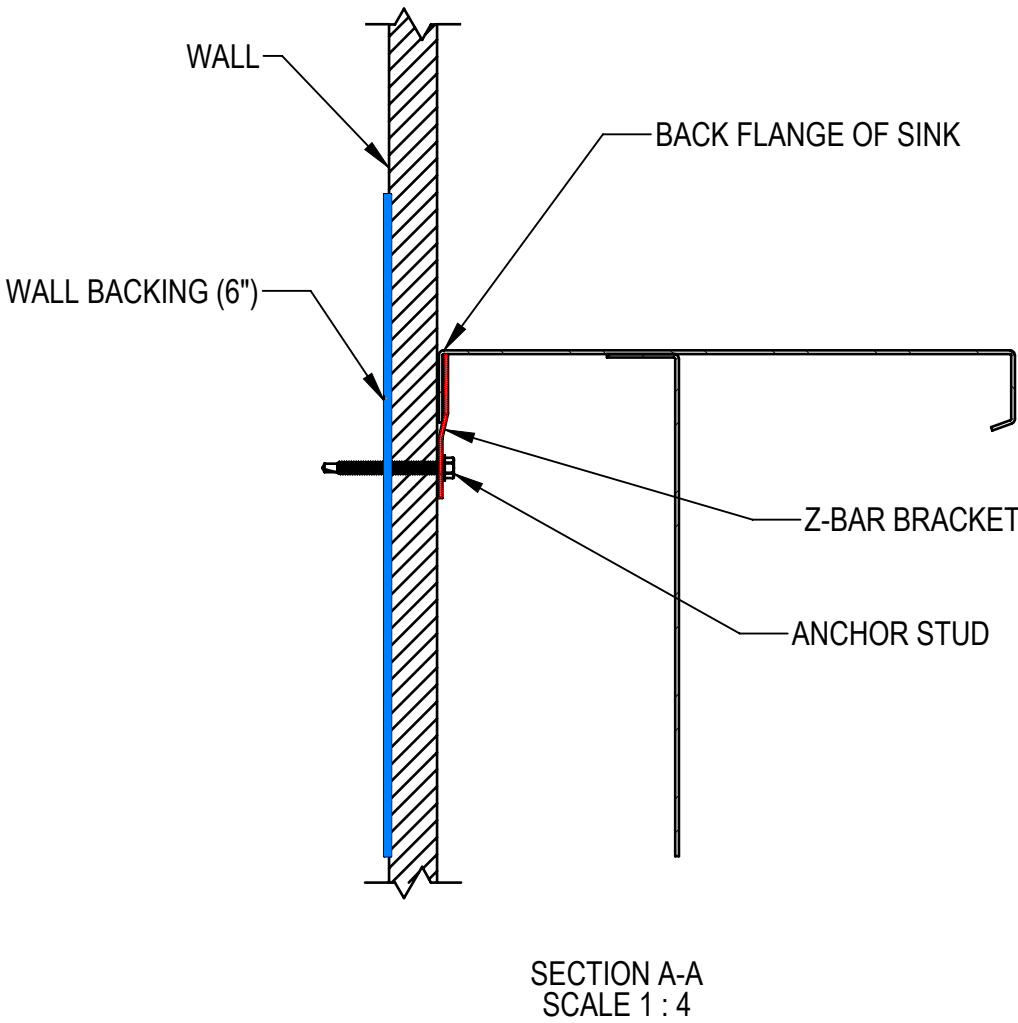
1. FLUSH LINES CLEAR BEFORE CONNECTING TO STATION.
2. PLUMBER TO PROVIDE SHUT OFF VALVES FOR WATER CONNECTIONS AND P-TRAP FOR DRAIN.
3. PROVIDE 60-65 PSI WATER PRESSURE AND 4 GALLONS PER MINUTE OF FLOW FOR PROPER OPERATION OF HYDRO ASPIRATOR.
4. ELECTRICIAN TO PROVIDE LIQUID TIGHT JUNCTION BOX AND CONDUIT CONNECTIONS PER LOCAL CODES.
5. EXHAUST RECOMMENDATIONS: 400-450 CFM @ 0.25 W.G.



WALL MOUNTING NOTES:

- 1. Z-BAR SHIPPED WITHOUT MOUNTING HOLES FOR ADOPTION TO FIELD CONDITIONS. HOLES TO BE DRILLED BY INSTALLER.
- 2. INSTALL MINIMUM (8) UPPER ANCHORS.  
FIRST HOLE: 1" IN FROM SIDE OF Z-BAR.  
Z-BAR LENGTH: 80" LONG.  
ADDITIONAL ANCHORS CAN BE ADDED AS NEEDED.
- 3. USE MINIMUM 1/4" TEK SCREWS 2 3/4" LONG. ADJUST LENGTH PER WALL THICKNESS.
- 4. ANCHORS USED MUST BE FLUSH TO Z-BAR AS MUCH AS POSSIBLE. THEY MUST NOT INTERFERE WITH PLUMBING BEHIND WALL.
- 5. THE LOWER ANCHORS ARE USED TO KEEP THE BOTTOM OF THE SINK FROM PULLING AWAY FROM THE WALL. THE Z-BAR HOLDS THE WEIGHT OF THE SINK.
- 6. INSTALLATION IS BASED ON ROUGH-IN MOUNTING DETAIL PROVIDED.

**CRITICAL INSTALLATION NOTE:**  
IT IS CRITICAL FOR THE EXHAUST CARRIER AND SINK EXHAUST DUCTS TO BE PROPERLY ALIGNED. THE CARRIER SHOULD BE PRESENT AT TIME OF INSTALLATION. THE SINK SHALL BE MOUNTED SO THAT THE CARRIER CAN BE LOCKED INTO THE SINK EXHAUST DUCTS. YOU MAY NEED TO ALLOW FOR BUILDING INCONSISTENCIES. (FOR EXAMPLE-UNEVEN FLOORS AND WALLS, ETC...)



SUPPORT LOCATION FOR SINK MOUNTING ONLY.  
ADDITIONAL WALL SUPPORTS MAY BE REQUIRED.

CUSTOMER	APPROVAL		<div>PROPRIETARY</div> <div>THIS DOCUMENT AND THE DATE DISCLOSED HEREIN AND HEREWITH IS NOT TO BE REPRODUCED, USED, OR OTHERWISE DISCLOSED IN WHOLE OR IN PART TO ANYONE WITHOUT WRITTEN AUTHORIZATION FROM MORTECH MFG.</div>			<div><div><div>MOPEC GROUP</div><div><div>MOPEC</div><div>MORTECH</div><div><small>MANUFACTURING</small></div></div></div><div>411 North Aerojet Avenue Azusa, CA 91702 tel: (800) 410-0100 (626) 334-1471 fax: (626) 334-1704 <a href="http://www.moritechmfg.com">www.moritechmfg.com</a></div></div>	
PROJECT						TITLE	
			DO NOT SCALE DRAWING		APPROVALS	DATE	
			MATERIAL	DRAWN BY	03/22/19		
			304 STAINLESS STEEL	BRIAN W.			
		SIGNATURE	DATE	CHECKED BY			
				FINISH	APPROVED BY		
				#4 SATIN			
				SCALE		1:8	
				NEXT ASSY.			
				SHEET		3 OF 3	
				REV.		X01	
				DWG NO.		1036-25R-AP	