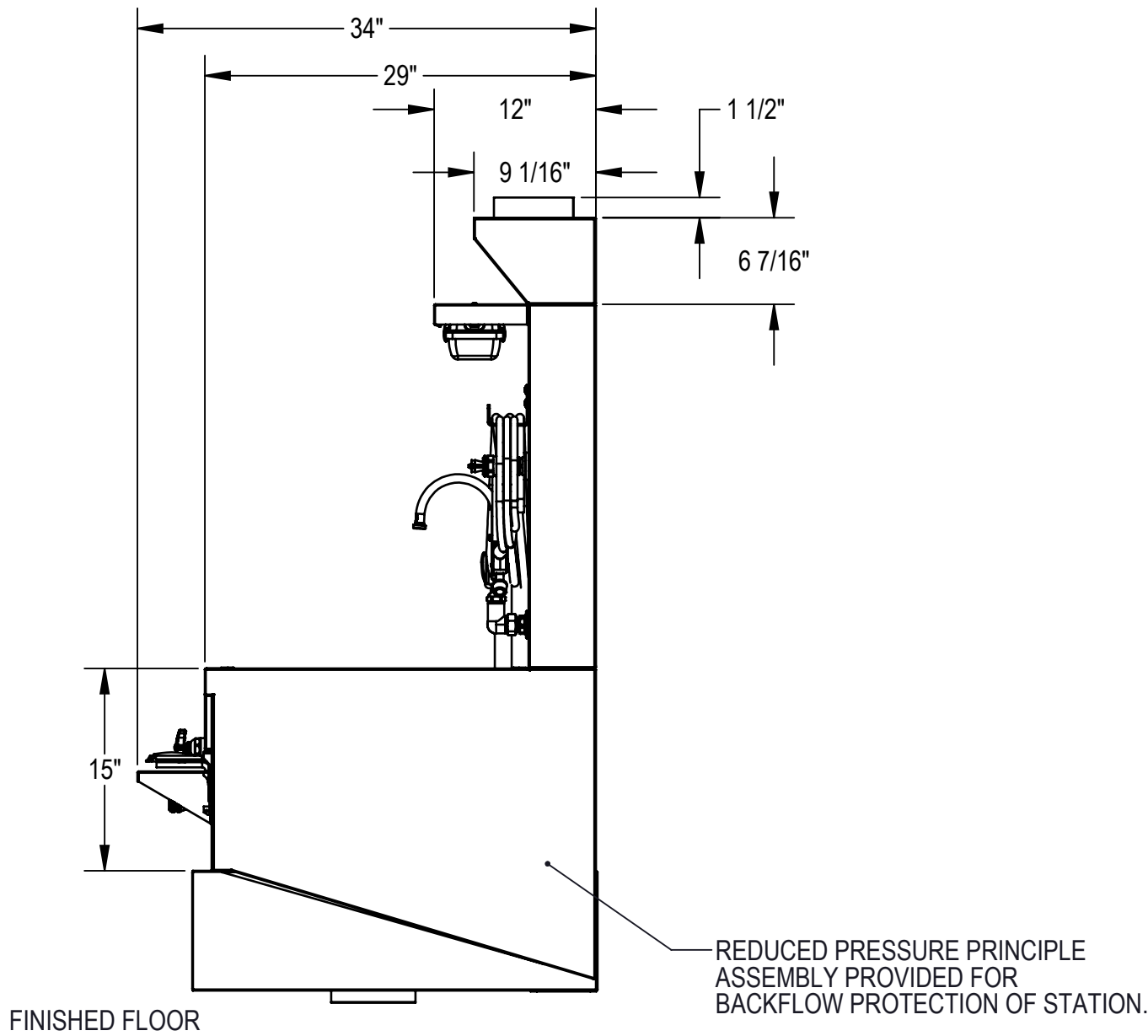
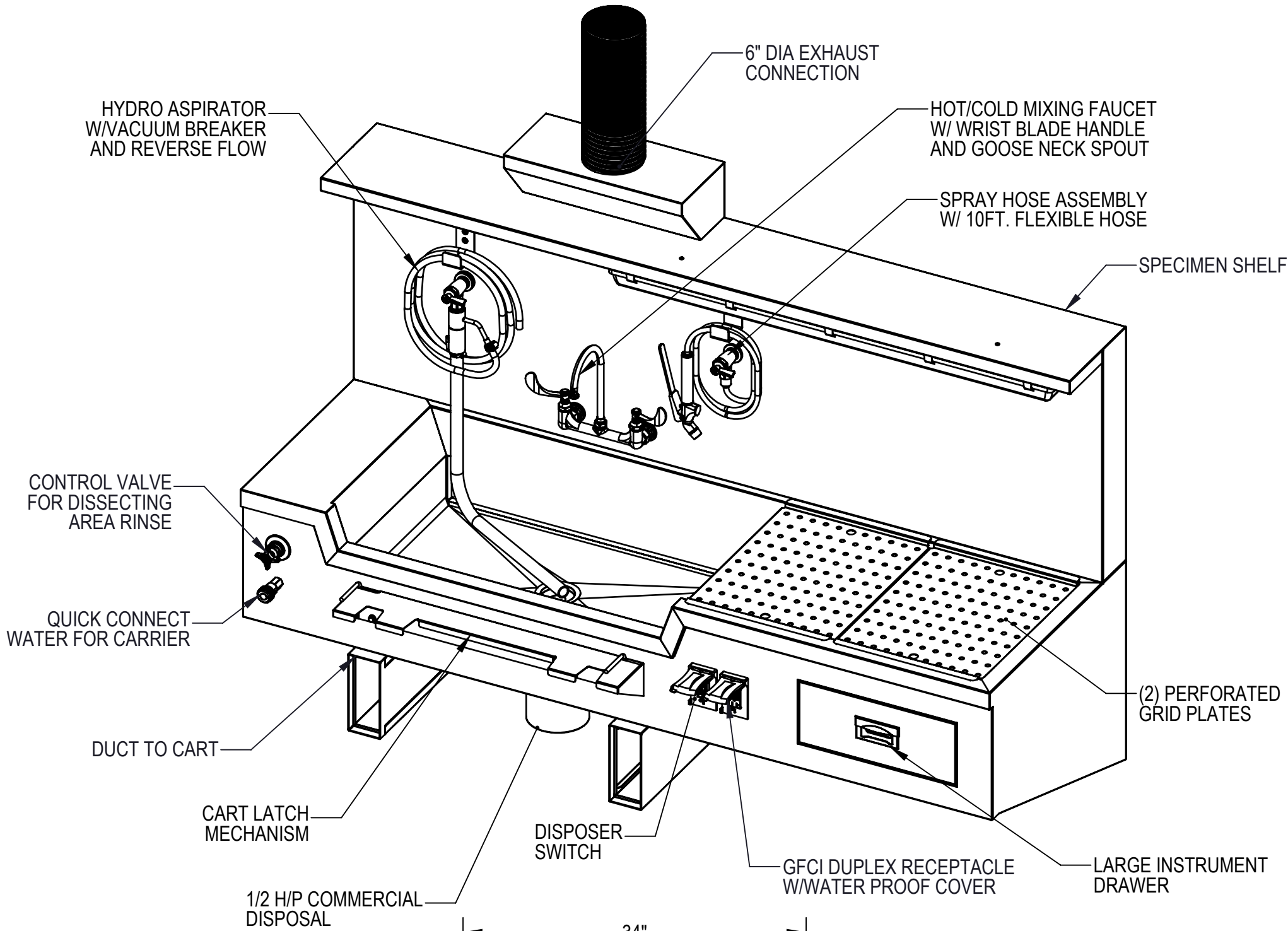
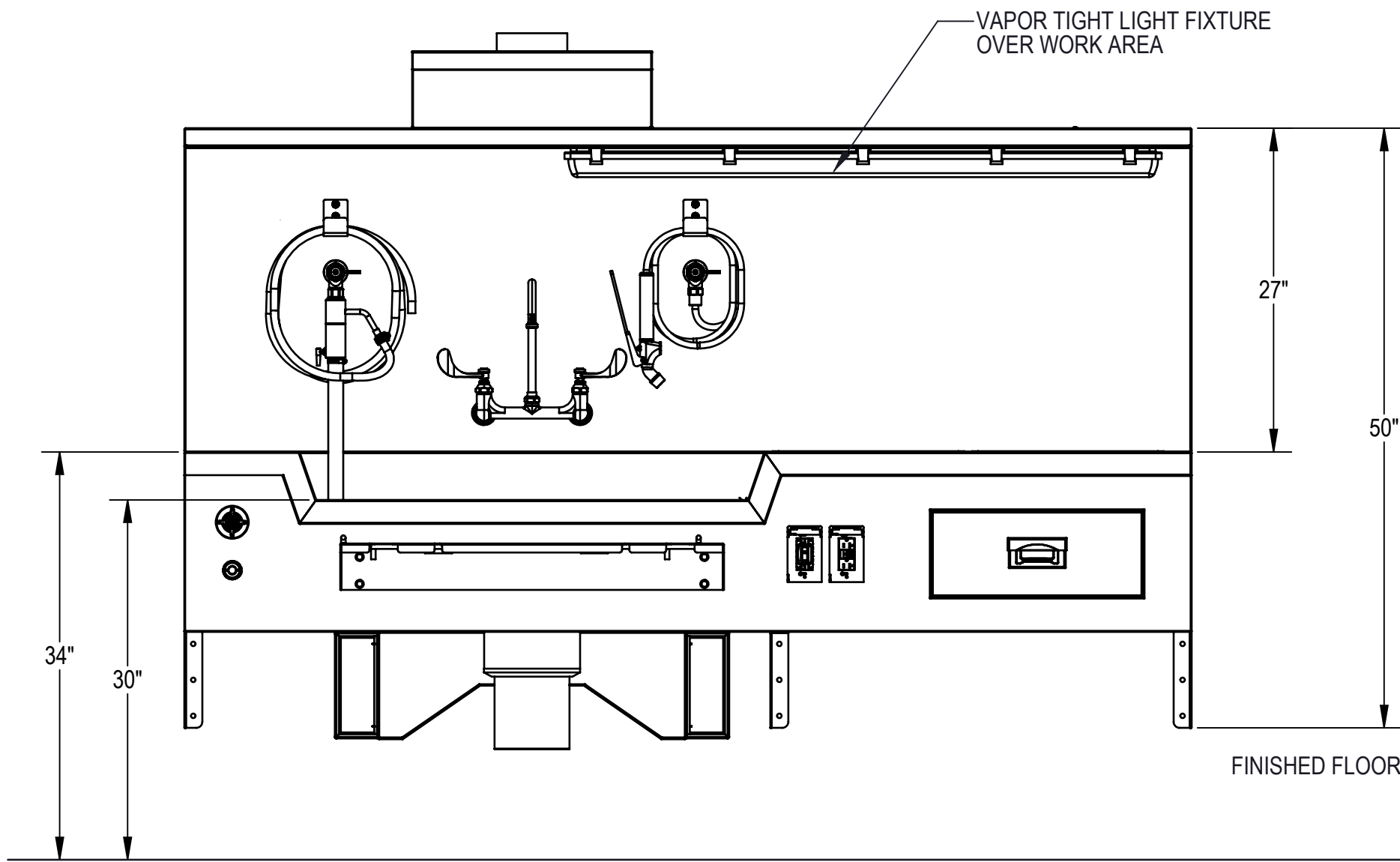
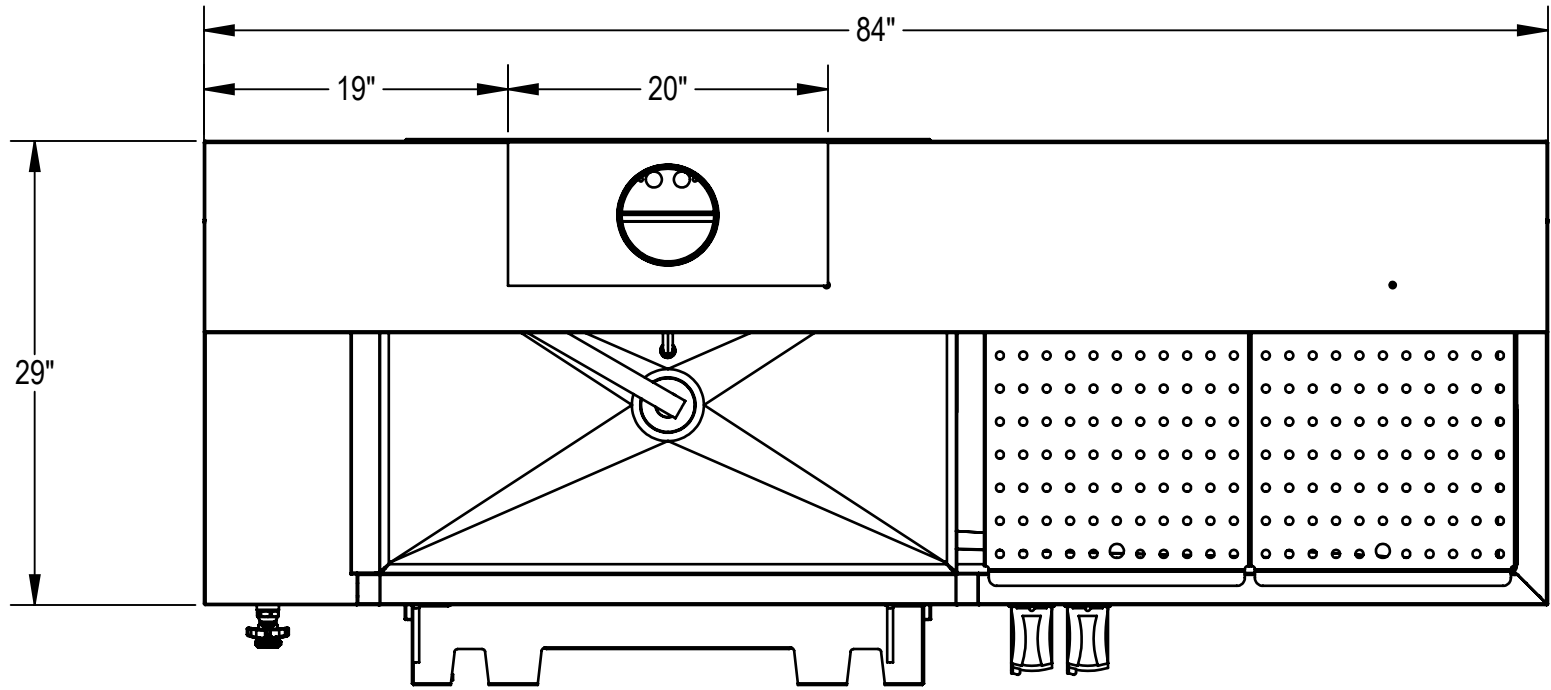


NOTES: UNLESS OTHERWISE SPECIFIED

1. APPLICABLE STANDARDS AND SPECIFICATIONS;
ANSI Y14.5M, DIMENSIONS AND TOLERANCES
ANSI Y1.1, ABBREVIATIONS



CUSTOMER		APPROVAL	
PROJECT			
SIGNATURE		DATE	

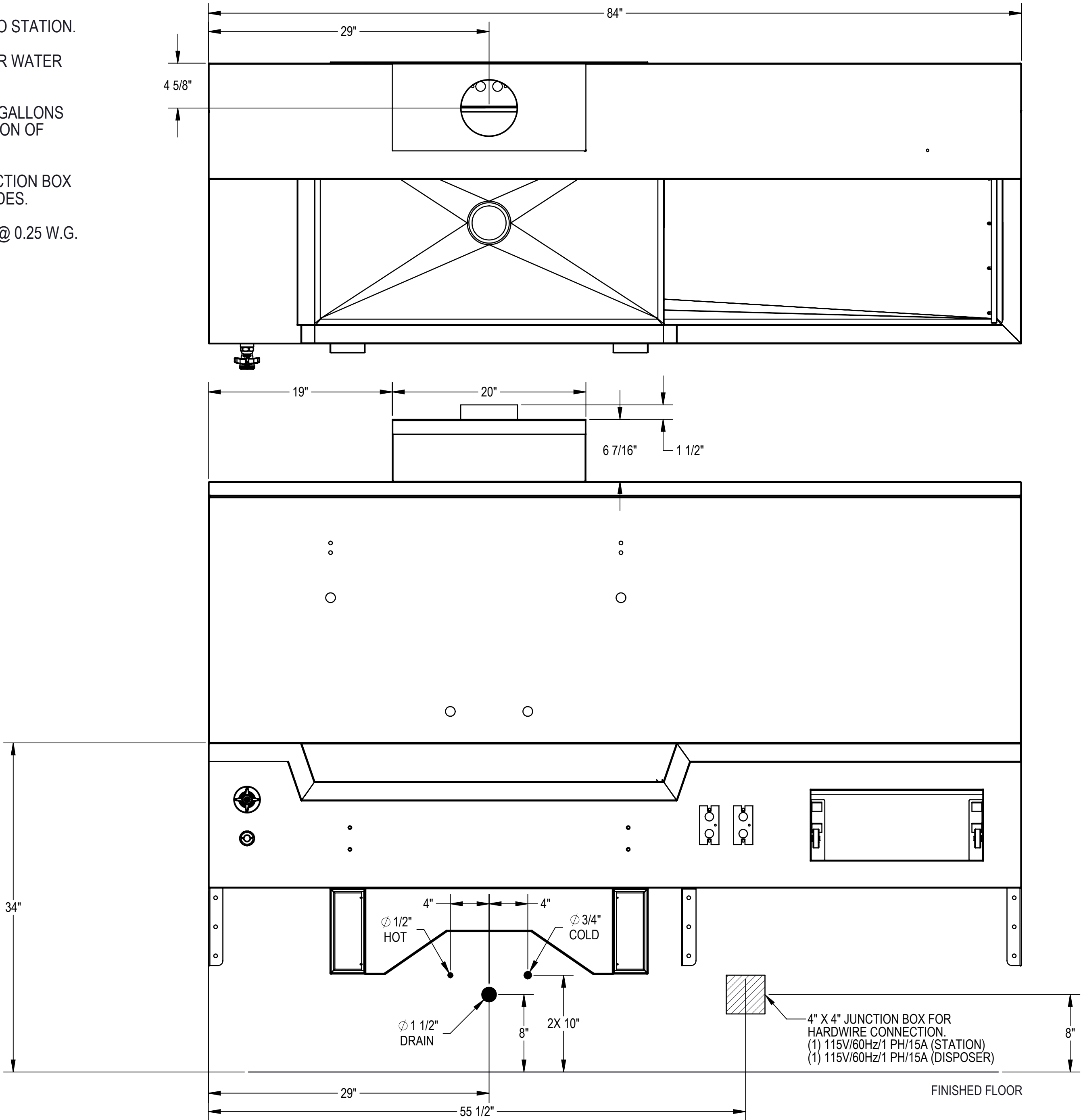
DO NOT SCALE DRAWING		APPROVALS		DATE	
MATERIAL		DRAWN BY		04/18/17	
304 STAINLESS STEEL		GABRIEL G.			
FINISH		CHECKED BY			
#4 SATIN		APPROVED BY			

PROPRIETARY					
THIS DOCUMENT AND THE DATE DISCLOSED HEREIN AND HERewith IS NOT TO BE REPRODUCED, USED, OR OTHERWISE DISCLOSED IN WHOLE OR IN PART TO ANYONE WITHOUT WRITTEN AUTHORIZATION FROM MORTECH MFG.					
DO NOT SCALE DRAWING		APPROVALS		DATE	
MATERIAL		DRAWN BY		04/18/17	
304 STAINLESS STEEL		GABRIEL G.			
FINISH		CHECKED BY			
#4 SATIN		APPROVED BY			

MOPEC GROUP					
411 North Aerojet Avenue Azusa, CA 91702 tel: (800) 410-0100 (626) 334-1471 fax: (626) 334-1704 www.mortechmfg.com					
TITLE					
MODEL 1036-25-L					
WALL MOUNTED AUTOPSY STATION, LEFT SINK					
SIZE		DWG NO.		REV.	
C		1036-25L-AP		X01	
SCALE		NEXT ASSY.		SHEET	
1:12				1 OF 3	

UTILITY REQUIREMENT NOTES:

1. FLUSH LINES CLEAR BEFORE CONNECTING TO STATION.
2. PLUMBER TO PROVIDE SHUT OFF VALVES FOR WATER CONNECTIONS AND P-TRAP FOR DRAIN.
3. PROVIDE 60-65 PSI WATER PRESSURE AND 4 GALLONS PER MINUTE OF FLOW FOR PROPER OPERATION OF HYDRO ASPIRATOR.
4. ELECTRICIAN TO PROVIDE LIQUID TIGHT JUNCTION BOX AND CONDUIT CONNECTIONS PER LOCAL CODES.
5. EXHAUST RECOMMENDATIONS: 400-450 CFM @ 0.25 W.G.

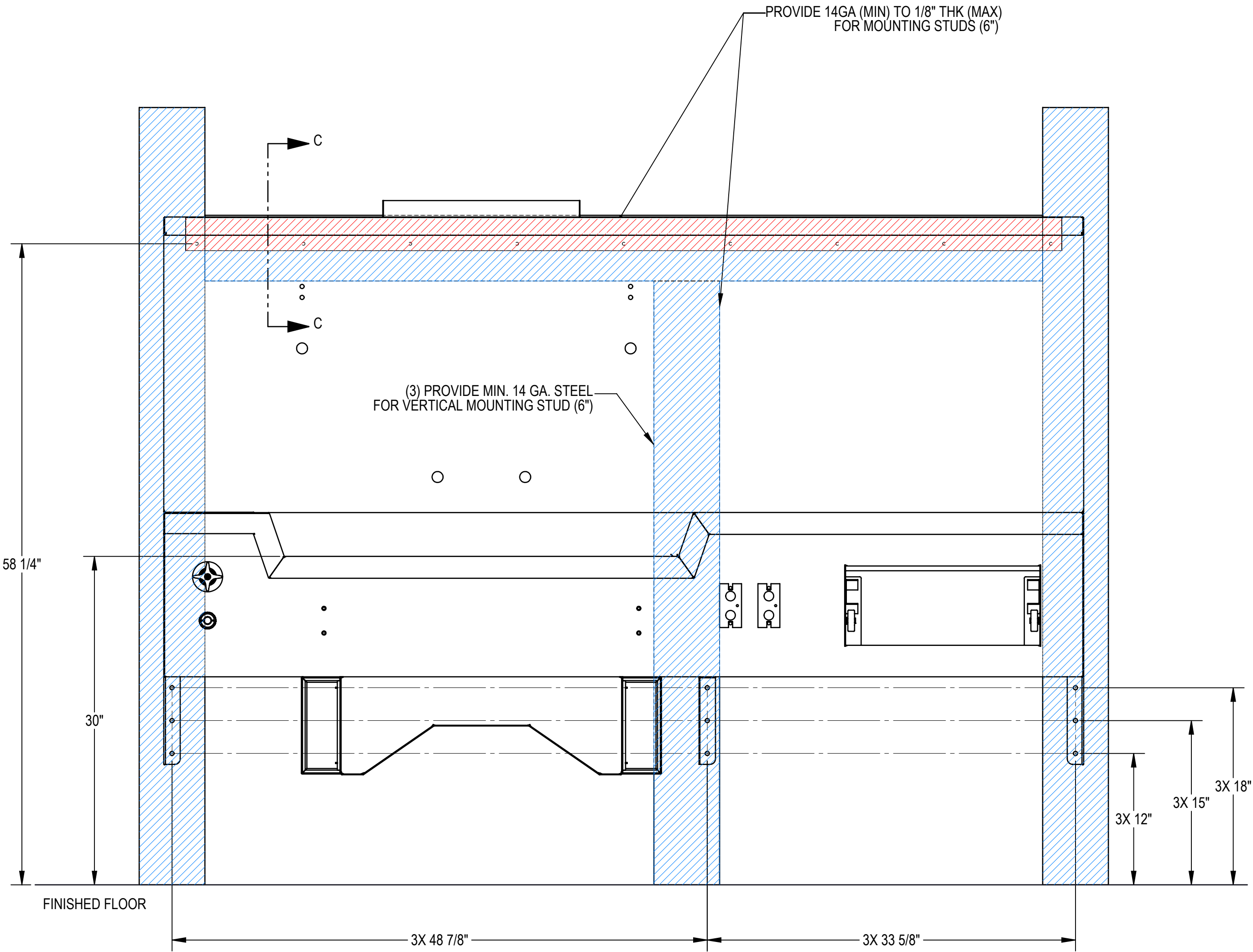
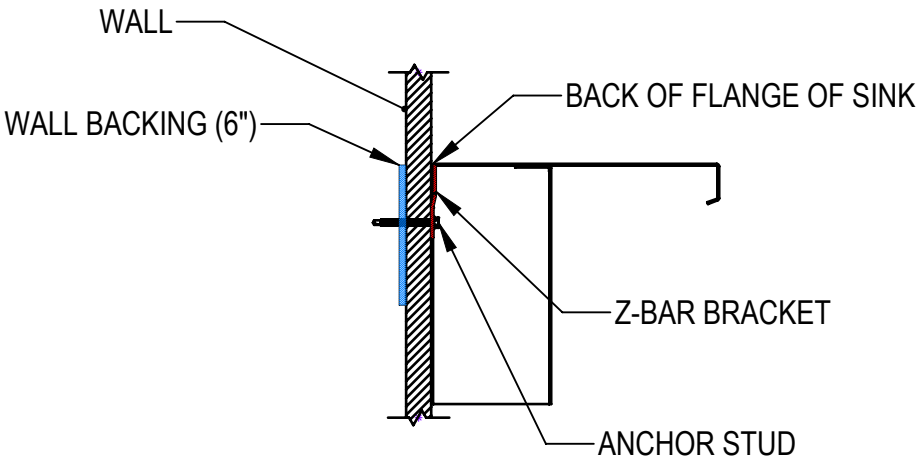


CUSTOMER		APPROVAL		PROPRIETARY			MOPEC GROUP			411 North Aerojet Avenue Azusa, CA 91702 tel: (800) 410-0100 (626) 334-1471 fax: (626) 334-1704 www.mortechmfg.com		
PROJECT				THIS DOCUMENT AND THE DATE DISCLOSED HEREIN AND HEREWITH IS NOT TO BE REPRODUCED, USED, OR OTHERWISE DISCLOSED IN WHOLE OR IN PART TO ANYONE WITHOUT WRITTEN AUTHORIZATION FROM MORTECH MFG.			TITLE			MODEL 1036-25-L		
				DO NOT SCALE DRAWING			APPROVALS			WALL MOUNTED AUTOPSY STATION, LEFT SINK ROUGH-IN		
				MATERIAL			DRAWN BY			SIZE		
				304 STAINLESS STEEL			GABRIEL G.			C		
				FINISH			CHECKED BY			DWG NO.		
				#4 SATIN			APPROVED BY			1036-25L-AP		
										REV. X01		
										SCALE 1:8		
										NEXT ASSY.		
										SHEET 2 OF 3		

WALL MOUNTING NOTES:

1. Z-BAR SHIPPED WITHOUT MOUNTING HOLES FOR ADOPTION TO FIELD CONDITIONS. HOLES TO BE DRILLED BY INSTALLER.
2. INSTALL MINIMUM (8) UPPER ANCHORS.
FIRST HOLE: 1" IN FROM SIDE OF Z-BAR.
Z-BAR LENGTH: 80" LONG.
ADDITIONAL ANCHORS CAN BE ADDED AS NEEDED.
3. USE MINIMUM 1/4" TEK SCREWS 2 3/4" LONG. ADJUST LENGTH PER WALL THICKNESS.
4. ANCHORS USED MUST BE FLUSH TO Z-BAR AS MUCH AS POSSIBLE. THEY MUST NOT INTERFERE WITH PLUMBING BEHIND WALL.
5. THE LOWER ANCHORS ARE USED TO KEEP THE BOTTOM OF THE SINK FROM PULLING AWAY FROM THE WALL. THE Z-BAR HOLDS THE WEIGHT OF THE SINK.
6. INSTALLATION IS BASED ON ROUGH-IN MOUNTING DETAIL PROVIDED.

CRITICAL INSTALLATION NOTE:
IT IS CRITICAL FOR THE EXHAUST CARRIER AND SINK EXHAUST DUCTS TO BE PROPERLY ALIGNED. THE CARRIER SHOULD BE PRESENT AT TIME OF INSTALLATION. THE SINK SHALL BE MOUNTED SO THAT THE CARRIER CAN BE LOCKED INTO THE SINK EXHAUST DUCTS. YOU MAY NEED TO ALLOW FOR BUILDING INCONSISTENCIES. (FOR EXAMPLE-UNEVEN FLOORS AND WALLS, ETC...)



SUPPORT LOCATION FOR SINK MOUNTING ONLY.
ADDITIONAL WALL SUPPORTS MAY BE REQUIRED.

CUSTOMER PROJECT	APPROVAL		PROPRIETARY THIS DOCUMENT AND THE DATE DISCLOSED HEREIN AND HEREWITH IS NOT TO BE REPRODUCED, USED, OR OTHERWISE DISCLOSED IN WHOLE OR IN PART TO ANYONE WITHOUT WRITTEN AUTHORIZATION FROM MORTECH MFG.			MOPEC GROUP 411 North Aerojet Avenue Azusa, CA 91702 tel: (800) 410-0100 (626) 334-1471 fax: (626) 334-1704 www.mortechmfg.com	
	SIGNATURE	DATE	DO NOT SCALE DRAWING	APPROVALS	DATE	TITLE	MODEL 1036-25-L
			MATERIAL	DRAWN BY	04/18/17	SIZE	WALL MOUNTED AUTOPSY STATION, LEFT SINK
			304 STAINLESS STEEL	GABRIEL G.	CHECKED BY	DWG NO.	1036-25L-AP
			FINISH	APPROVED BY		SCALE	REV. X01
			#4 SATIN			1:8	
						NEXT ASSY.	SHEET 3 OF 3