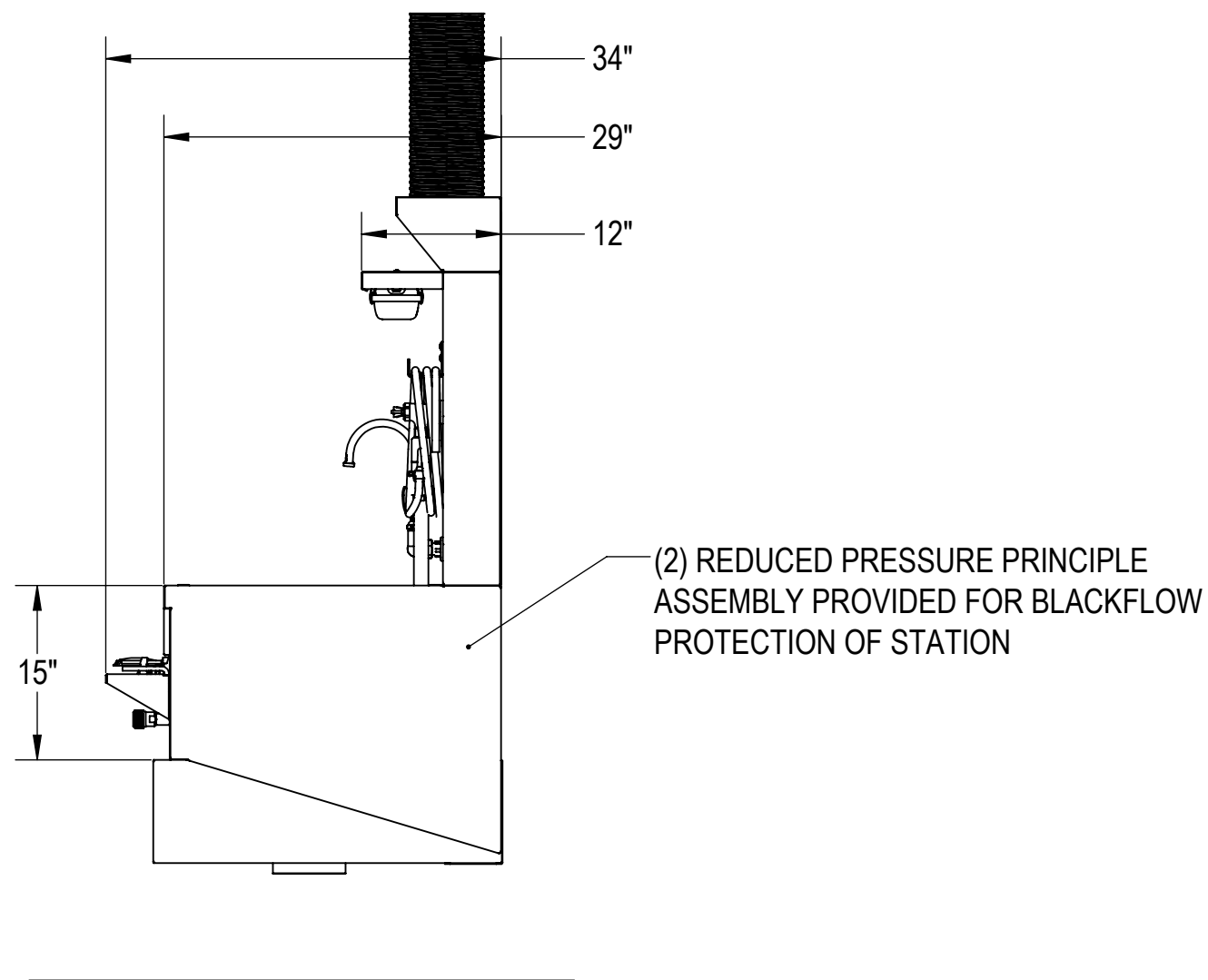
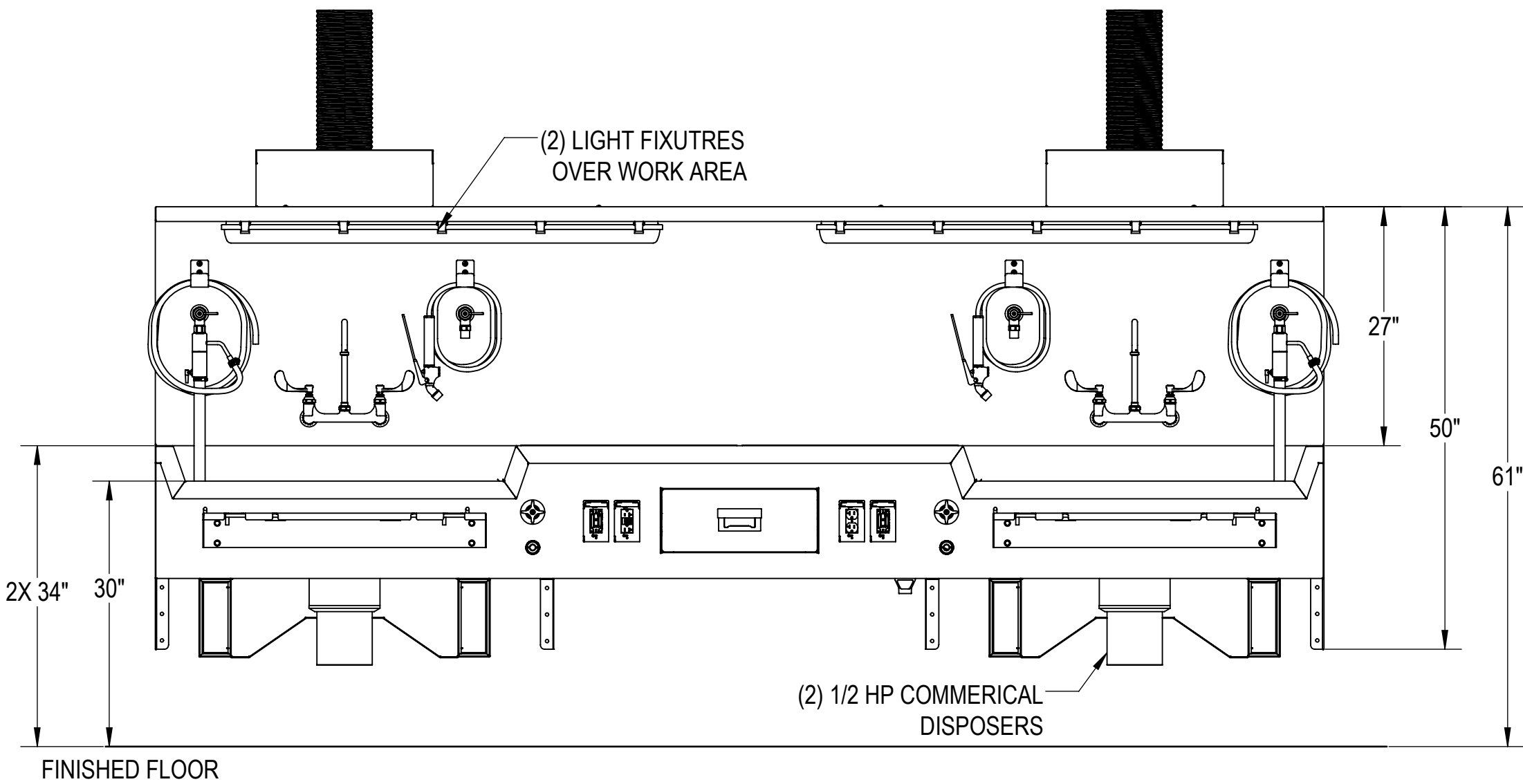
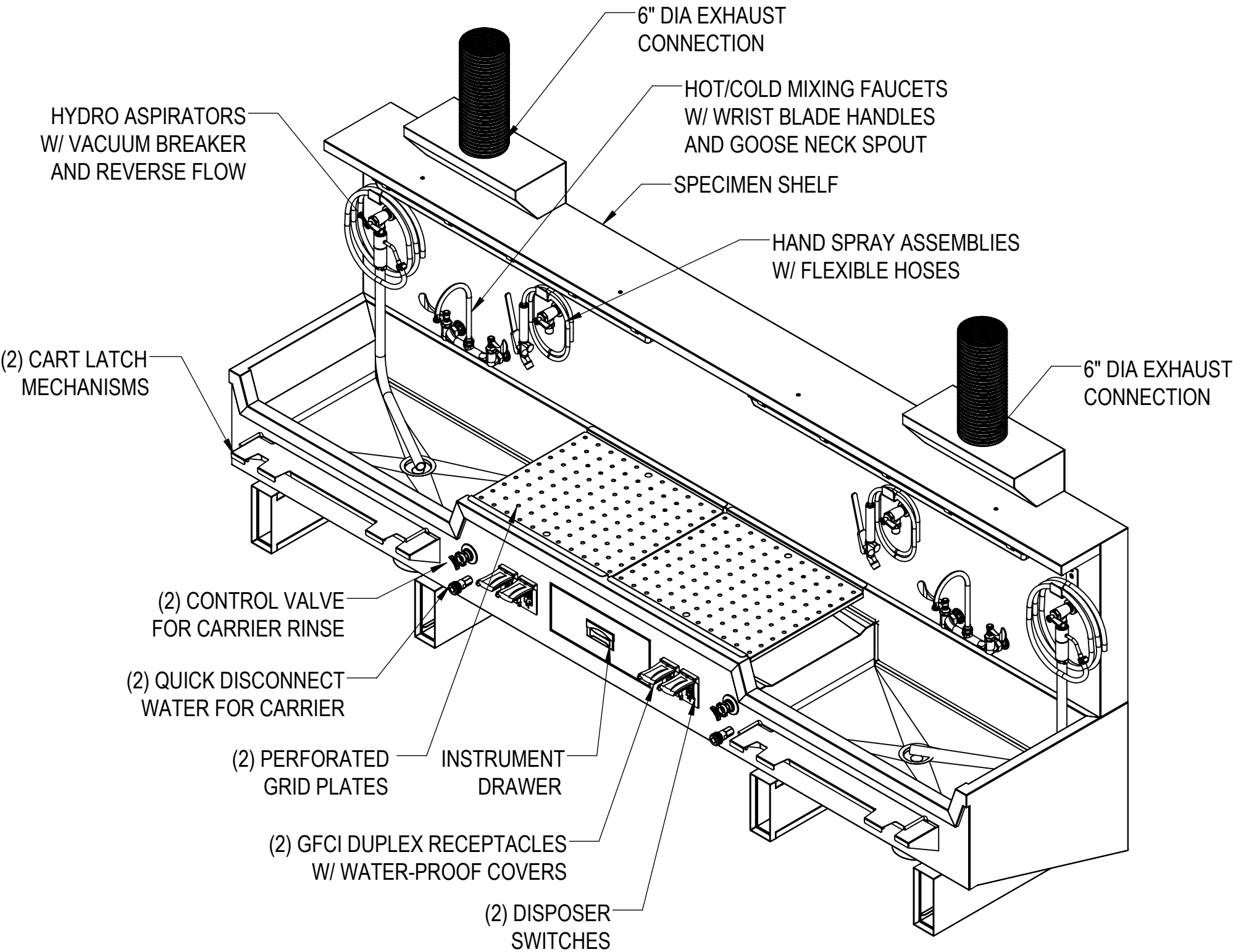
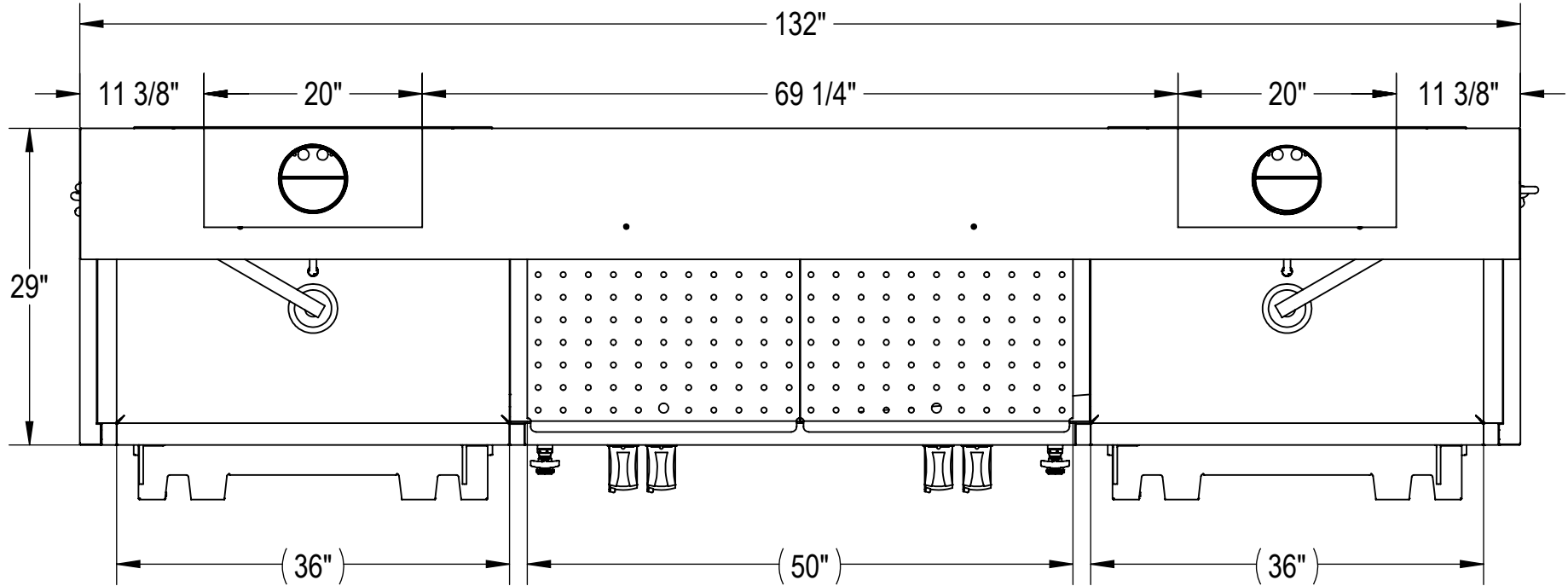


NOTES: UNLESS OTHERWISE SPECIFIED

1. APPLICABLE STANDARDS AND SPECIFICATIONS;
ASME Y14.5-2009, DIMENSIONING AND TOLERANCING
ASME Y14.38-2007, ABBREVIATIONS

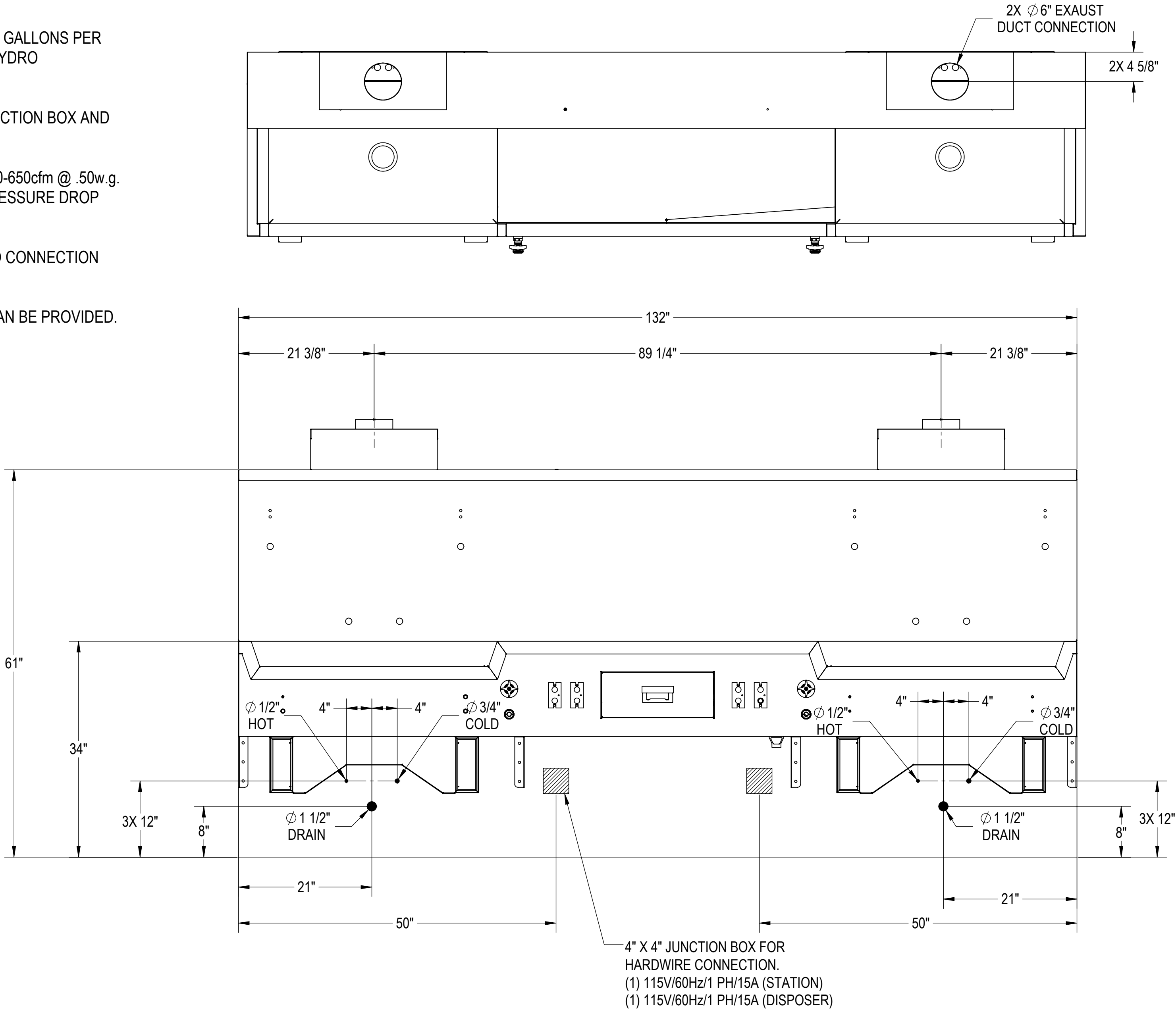


CUSTOMER CUSTOMER NAME		APPROVAL		PROPRIETARY		MOPEC GROUP		411 North Aerojet Avenue Azusa, CA 91702 tel: (800) 410-0100 (626) 334-1471 fax: (626) 334-1704 www.mortechmfg.com	
PROJECT PROJECT NAME		SIGNATURE		DATE		THIS DOCUMENT AND THE DATE DISCLOSED HEREIN AND HEREWITH IS NOT TO BE REPRODUCED, USED, OR OTHERWISE DISCLOSED IN WHOLE OR IN PART TO ANYONE WITHOUT WRITTEN AUTHORIZATION FROM MORTECH MFG.		TITLE MODEL 1036-D AUTOPSY STATION, CENTER DISSECTING	
						DO NOT SCALE DRAWING		APPROVALS	
						MATERIAL 304 STAINLESS STEEL		DRAWN BY BRIAN W.	
						FINISH #4 SATIN		CHECKED BY	
								DATE 11/19/18	
								APPROVED BY	
								SCALE 1:15	
								NEXT ASSY.	
								SHEET 1 OF 3	
								REV. X01	

UTILITY REQUIREMENT NOTES:

1. FLUSH LINES CLEAR BEFORE CONNECTING TO STATION.
2. PLUMBER TO PROVIDE SHUT-OFF VALVES FOR WATER CONNECTIONS AND P-TRAP FOR DRAIN.
3. PROVIDE 60-65 PSI WATER PRESSURE AND 4 GALLONS PER MINUTE OF FLOW PROPER OPERATION OF HYDRO ASPIRATOR.
4. ELECTRICIAN TO PROVIDE LIQUID TIGHT JUNCTION BOX AND CONDUIT CONNECTIONS PER LOCAL CODES.
5. EXHAUST RECOMMENDATIONS: PROVIDE 600-650cfm @ .50w.g. PER EXHAUST GRILL WILL APPROXIMATE PRESSURE DROP OF 0.25 w.g.
6. EXHAUST ROUGH-IN SHOWS AS UNEXPOSED CONNECTION THROUGH REAR OF UNIT.
7. EXPOSED CONNECTION OUT TOP OF SINK CAN BE PROVIDED. (PLEASE SPECIFY)

BACK FLOW PREVENTION PROVIDED REDUCED PRESSURE ZONE ASSEMBLY WITH AIR GAP. PROJECT PLUMBER TO CONNECT TO BUILDING DRAIN.

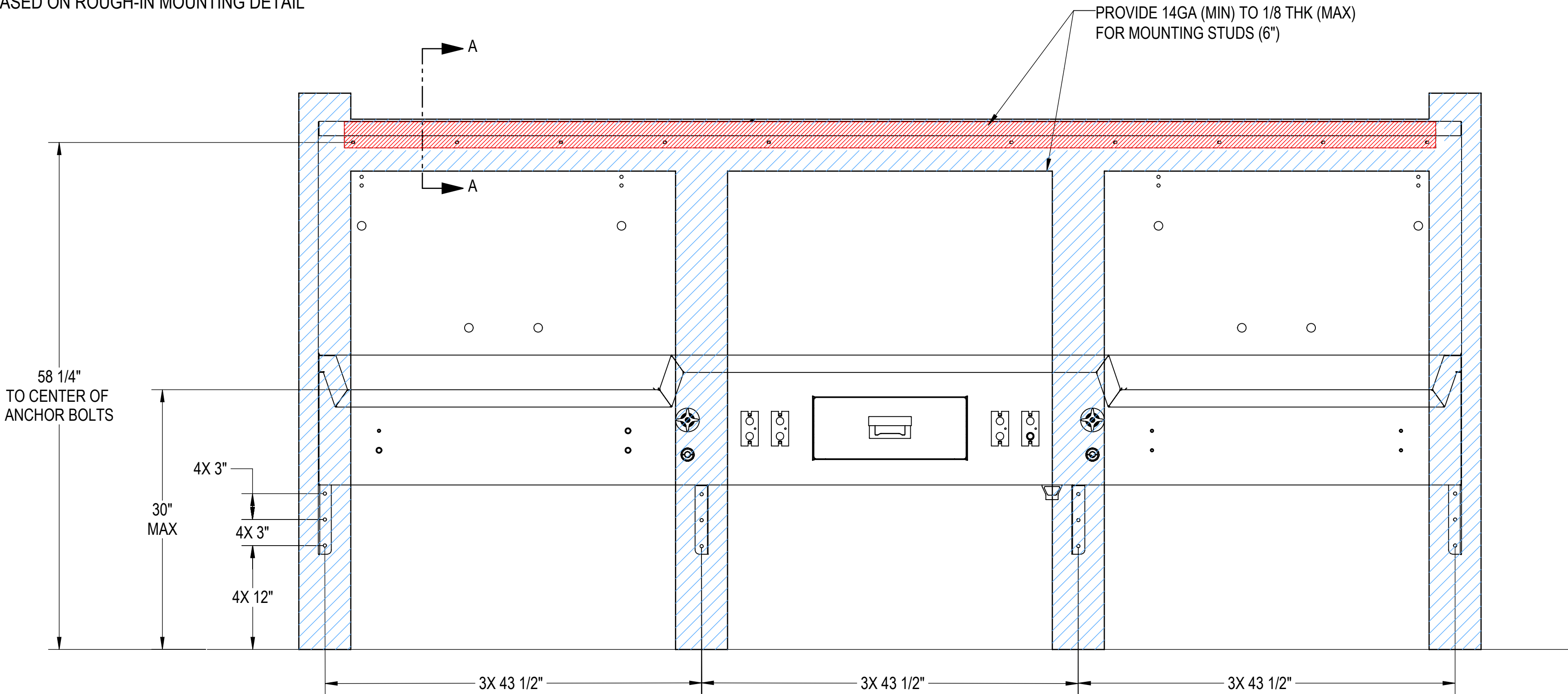
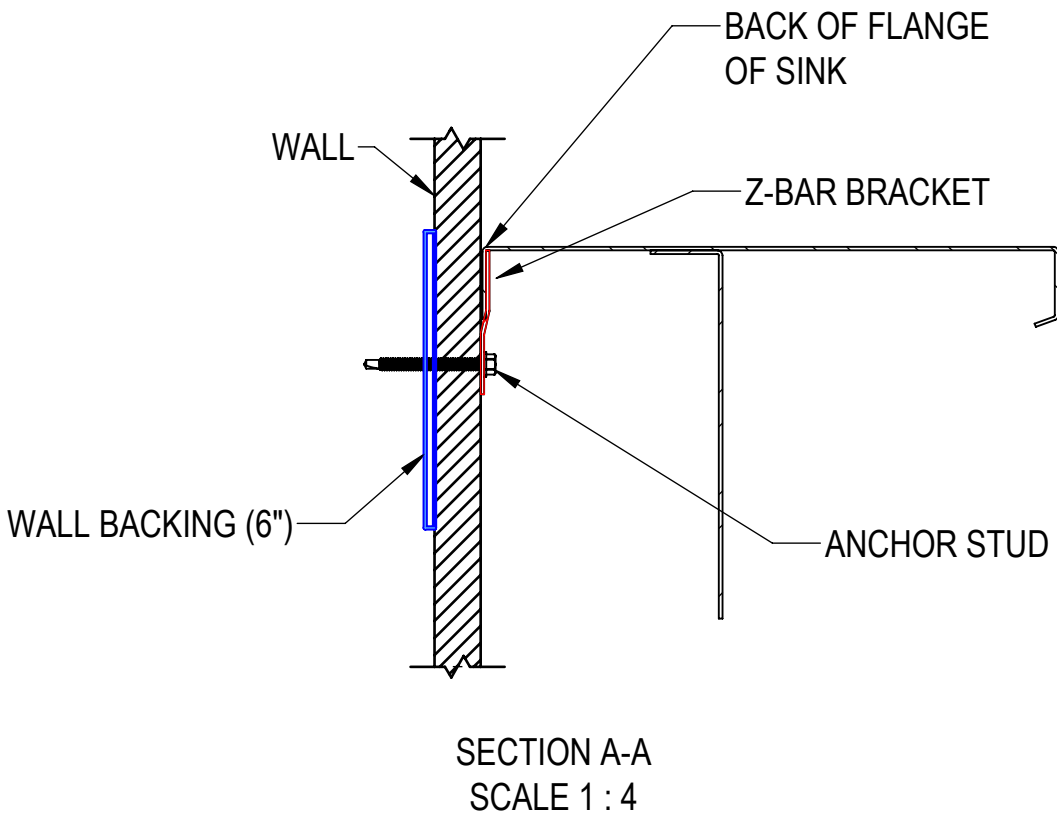


CUSTOMER	CUSTOMER NAME		APPROVAL	PROPRIETARY		MOPEC GROUP		411 North Aerojet Avenue Azusa, CA 91702 tel: (800) 410-0100 (626) 334-1471 fax: (626) 334-1704 www.mortechmfg.com	
PROJECT	PROJECT NAME		SIGNATURE		DATE	TITLE		MODEL 1036-D AUTOPSY STATION, CENTER DISSECTING ROUGH-IN	
						DO NOT SCALE DRAWING		APPROVALS	
						MATERIAL		DRAWN BY	
						304 STAINLESS STEEL		BRIAN W.	
						FINISH		CHECKED BY	
						#4 SATIN		APPROVED BY	
						DATE		11/19/18	
						SIZE		DWG NO.	
						C		1036-25-DAP	
						SCALE		NEXT ASSY.	
						1:12		SHEET	
								2 OF 3	
								REV. X01	

WALL MOUNTING NOTES:

1. Z-BAR SHIPPED WITHOUT MOUNTING HOLES FOR ADOPTION TO FIELD CONDITIONS. HOLES TO BE DRILLED BY INSTALLER.
2. INSTALL 14 ANCHORS AT 9 5/8" ON CENTER.
FIRST HOLE: 1" IN FROM SIDE OF Z-BAR.
Z-BAR LENGTH: 127 1/8" LONG.
ADDITIONAL ANCHORS CAN BE ADDED AS NEEDED.
3. USE MINIMUM 1/4" TEK SCREWS 2 3/4" LONG.
ADJUST LENGTH PER WALL THICKNESS.
4. ANCHORS USED MUST BE FLUSH TO Z-BAR AS MUCH AS POSSIBLE. THEY MUST NOT INTERFERE WITH PLUMBING BEHIND WALL.
5. THE LOWER ANCHORS ARE USED TO KEEP THE BOTTOM OF THE SINK FROM PULLING AWAY FROM THE WALL. THE Z-BAR HOLDS THE WEIGHT OF THE SINK.
6. USE MINIMUM OF (2) 1/4" TEK SCREWS PER LOWER GUSSET.
7. INSTALLATION IS BASED ON ROUGH-IN MOUNTING DETAIL PROVIDED.

SUPPORT LOCATION FOR SINK MOUNTING ONLY.
ADDITIONAL WALL SUPPORTS MAY BE REQUIRED.



CUSTOMER	CUSTOMER NAME
PROJECT	PROJECT NAME

APPROVAL	
SIGNATURE	DATE

PROPRIETARY		
THIS DOCUMENT AND THE DATE DISCLOSED HEREIN AND HEREWITH IS NOT TO BE REPRODUCED, USED, OR OTHERWISE DISCLOSED IN WHOLE OR IN PART TO ANYONE WITHOUT WRITTEN AUTHORIZATION FROM MORTECH MFG.		
DO NOT SCALE DRAWING	APPROVALS	DATE
MATERIAL	DRAWN BY	11/19/18
304 STAINLESS STEEL	CHECKED BY	
FINISH	APPROVED BY	
#4 SATIN		

MOPEC GROUP		411 North Aerojet Avenue Azusa, CA 91702 tel: (800) 410-0100 (626) 334-1471 fax: (626) 334-1704 www.mortechmfg.com	
TITLE			
MODEL 1036-D AUTOPSY STATION, CENTER DISSECTING WALL MOUNT			
SIZE	DWG NO.	REV.	
C	1036-25-DAP	X01	
SCALE	1:10	NEXT ASSY.	SHEET 3 OF 3