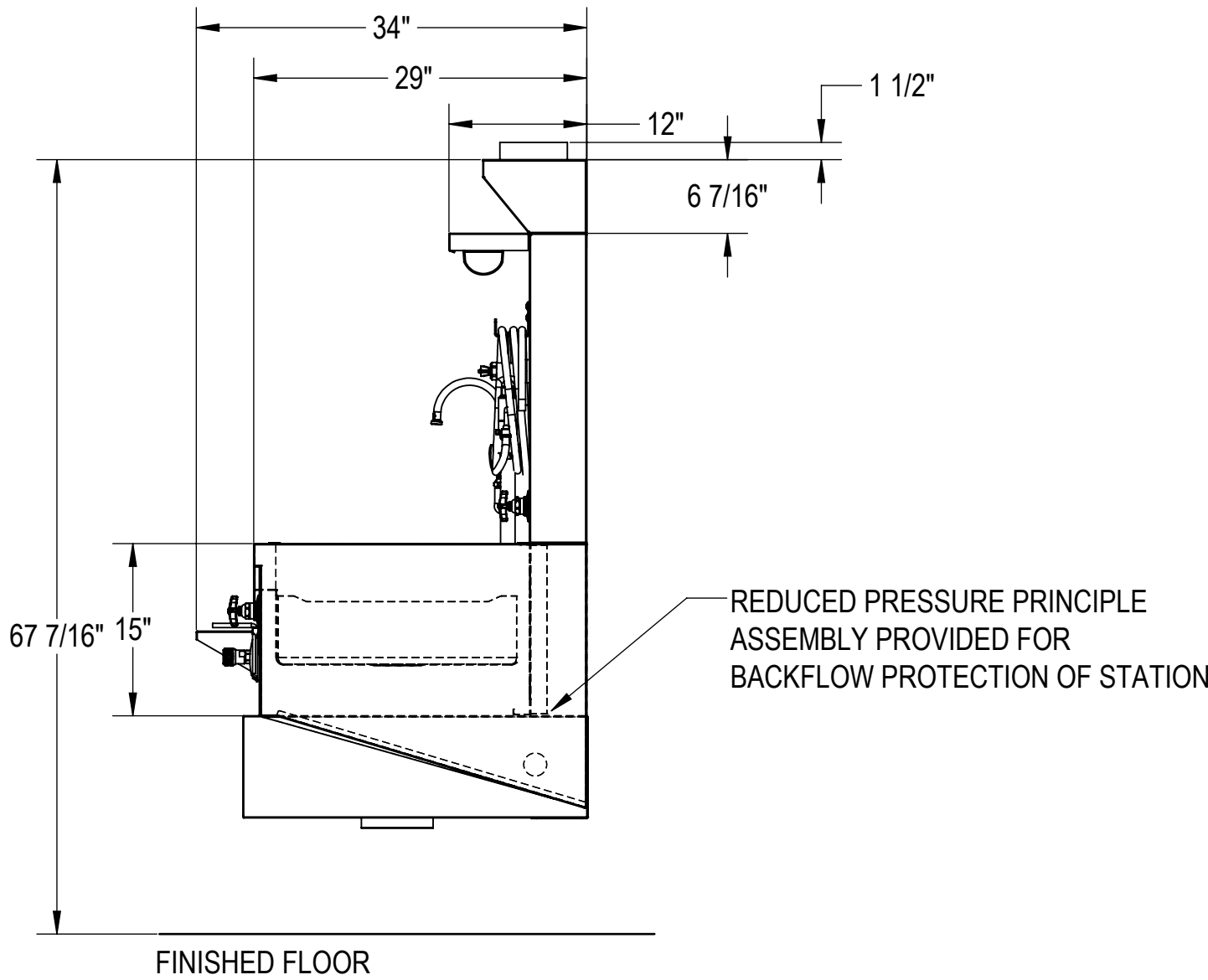
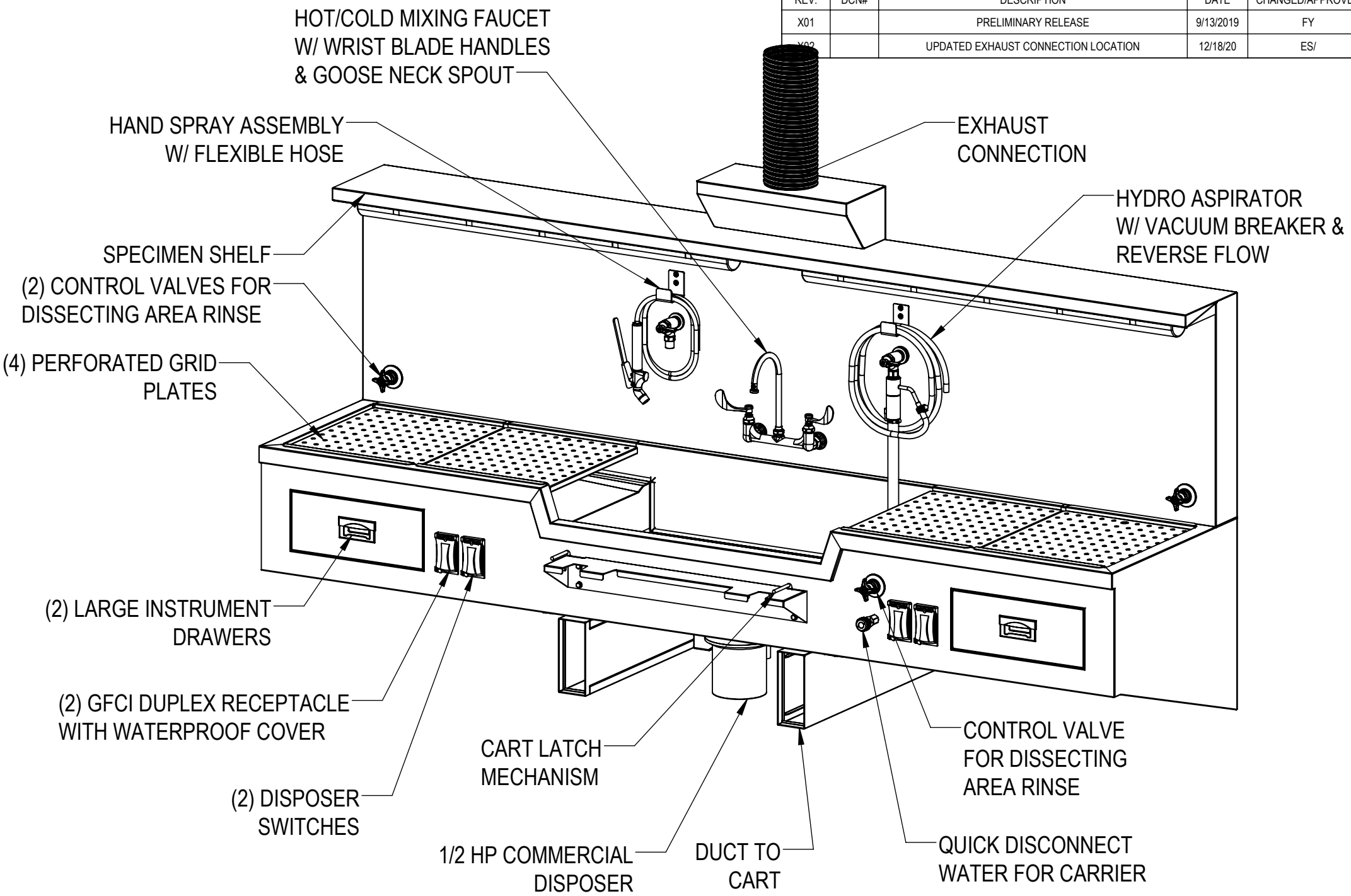
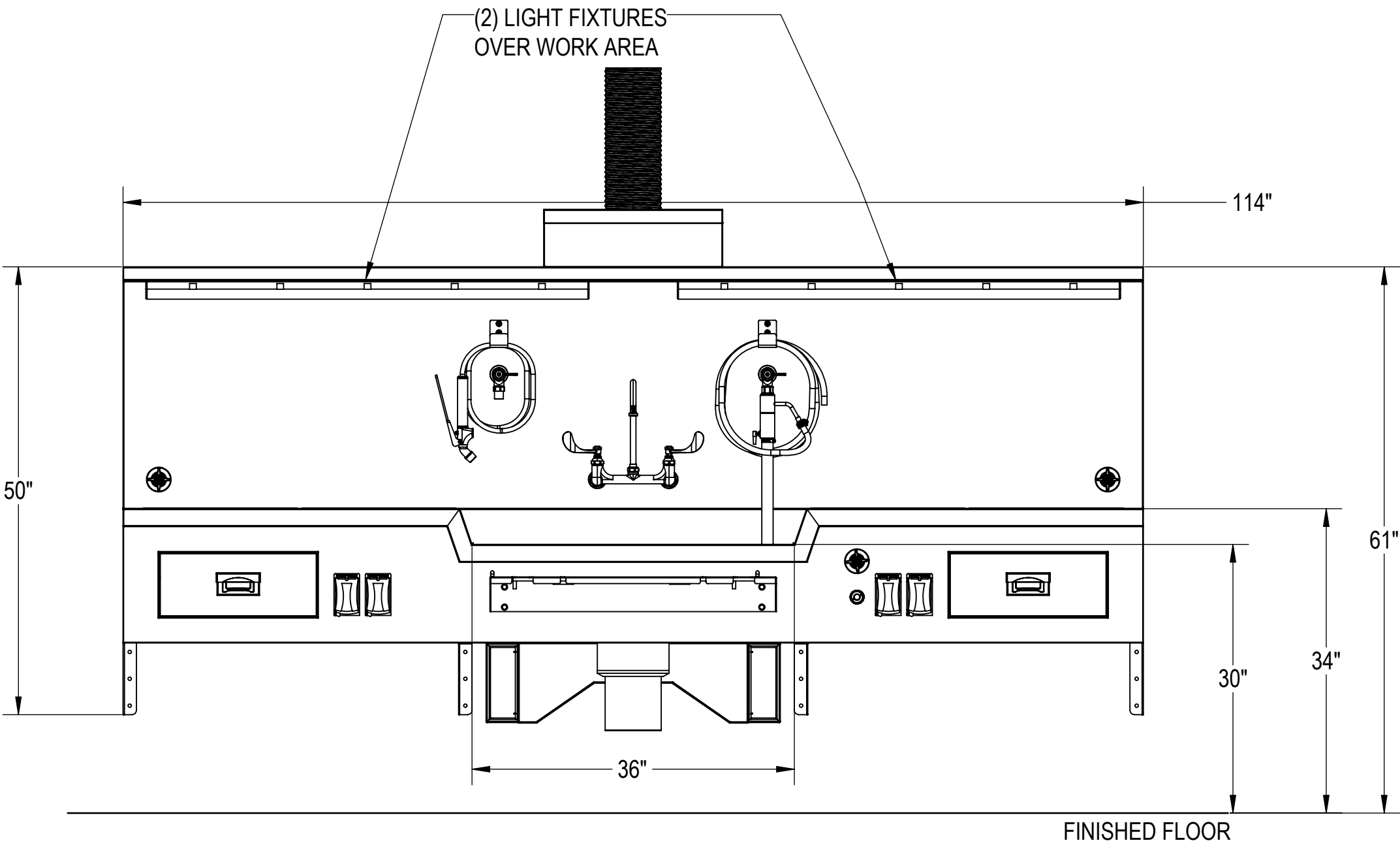
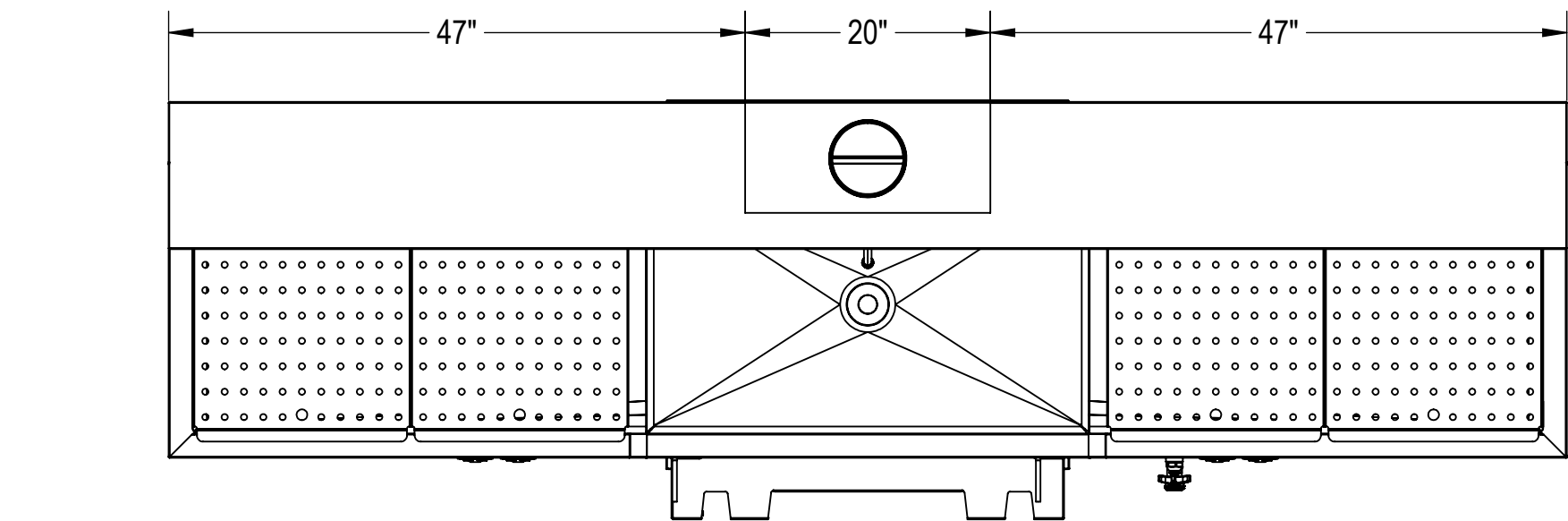


NOTES: UNLESS OTHERWISE SPECIFIED

1. APPLICABLE STANDARDS AND SPECIFICATIONS;  
ASME Y14.5-2009, DIMENSIONING AND TOLERANCING  
ASME Y14.38-2007, ABBREVIATIONS

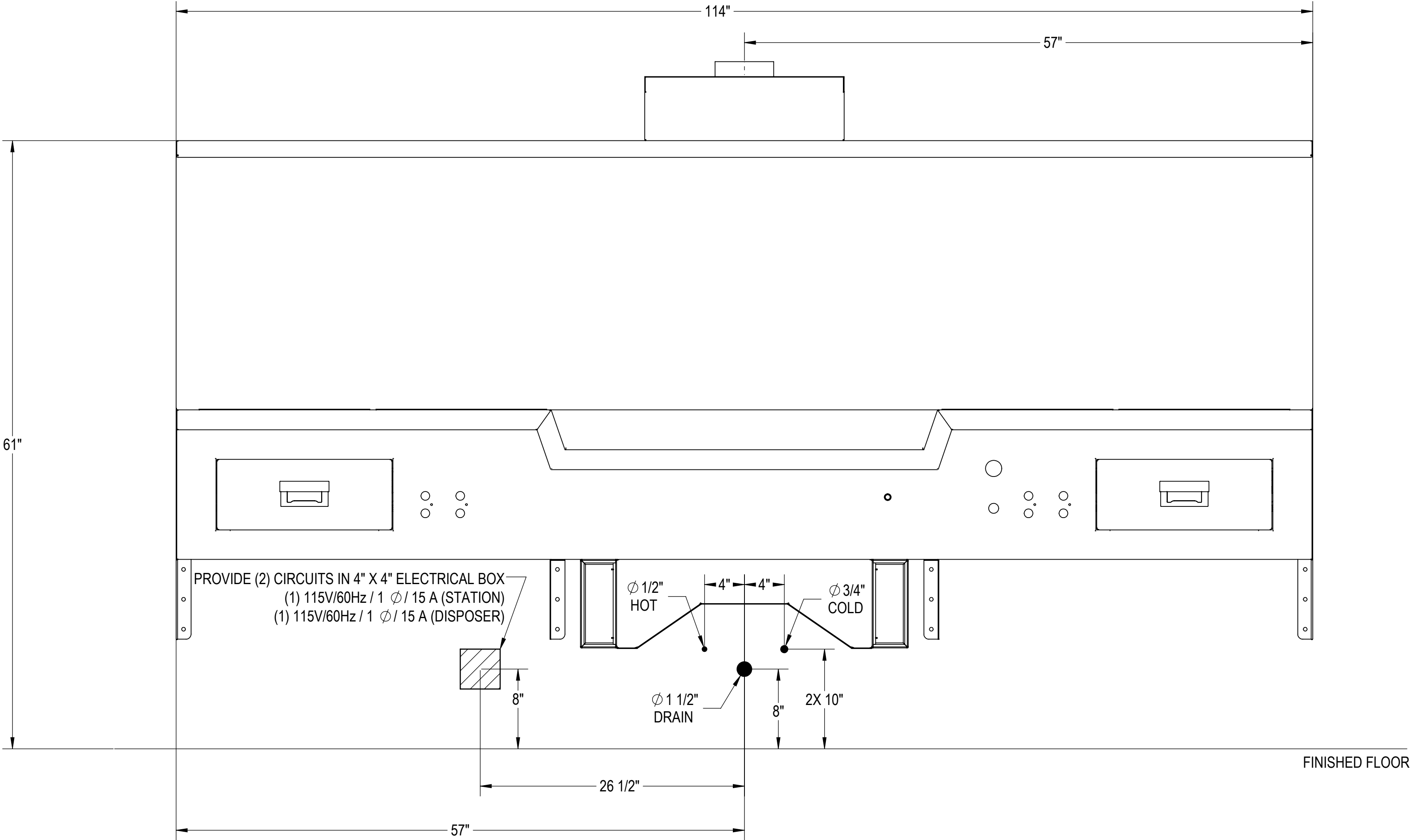
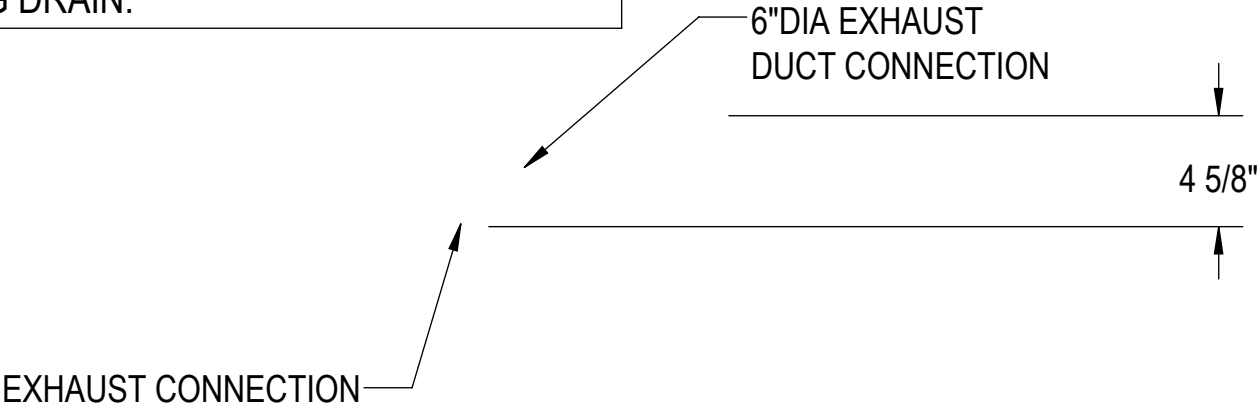


CUSTOMER		APPROVAL		PROPRIETARY		MOPEC GROUP		411 North Aerojet Avenue Azusa, CA 91702 tel: (800) 410-0100 (626) 334-1471 fax: (626) 334-1704 www.mortechmfg.com	
PROJECT		SIGNATURE		DATE		TITLE		MODEL 1036-25C	
CUSTOMER NAME		PROJECT NAME		DO NOT SCALE DRAWING		APPROVALS		WALL MOUNT AUTOPSY STATION, CENTER SINK	
				MATERIAL		F. YANEZ		DWG NO.	
				FINISH		ELISEO S.		1036-25-CAP	
						APPROVED BY		X02	
								SCALE 1:14	
								NEXT ASSY.	
								SHEET 1 OF 3	

UTILITY REQUIREMENT NOTES

1. FLUSH LINES CLEAR BEFORE CONNECTING TO STATION.
2. PLUMBER TO PROVIDE SHUT-OFF VALVES FOR WATER CONNECTIONS AND P-TRAP FOR DRAIN.
3. PROVIDE 60-65 PSI WATER PRESSURE AND 4 GALLONS PER MINUTE OF FLOW FOR PROPER OPERATION OF HYDRO ASPIRATOR.
4. ELECTRICIAN TO PROVIDE LIQUID TIGHT JUNCTION BOX AND CONDUIT CONNECTIONS PER LOCAL CODES.
5. RECOMMENDED EXHAUST: 400-450 CFM @ 0.25 W.G.

BACK FLOW PREVENTION PROVIDED REDUCED PRESSURE ZONE ASSEMBLY WITH AIR GAP. PROJECT PLUMBER TO CONNECT TO BUILDING DRAIN.



CUSTOMER		APPROVAL		PROPRIETARY			<div><div>MOPEC GROUP</div><div>411 North Aerojet Avenue Azusa, CA 91702 tel: (800) 410-0100 (626) 334-1471 fax: (626) 334-1704 www.mortechmfg.com</div></div>		
PROJECT		SIGNATURE		DATE		TITLE			
CUSTOMER NAME						MODEL 1036-25C			
PROJECT NAME						WALL MOUNT AUTOPSY STATION, CENTER SINK			
						ROUGH-IN			
						SIZE			
						C			
						DWG NO.			
						1036-25-CAP			
						REV.			
						X02			
						SCALE			
						1:8			
						NEXT ASSY.			
						SHEET			
						2			
						OF			
						3			

WALL MOUNTING NOTES:

1. Z-BAR SHIPPED WITHOUT MOUNTING HOLES FOR ADOPTION TO FIELD CONDITIONS. HOLES TO BE DRILLED BY INSTALLER.

2. INSTALL MINIMUM (11) UPPER ANCHORS..  
FIRST HOLE: 1" IN FROM SIDE OF Z-BAR.  
Z-BAR LENGTH: 110" LONG.  
ADDITIONAL ANCHORS CAN BE ADDED AS NEEDED.

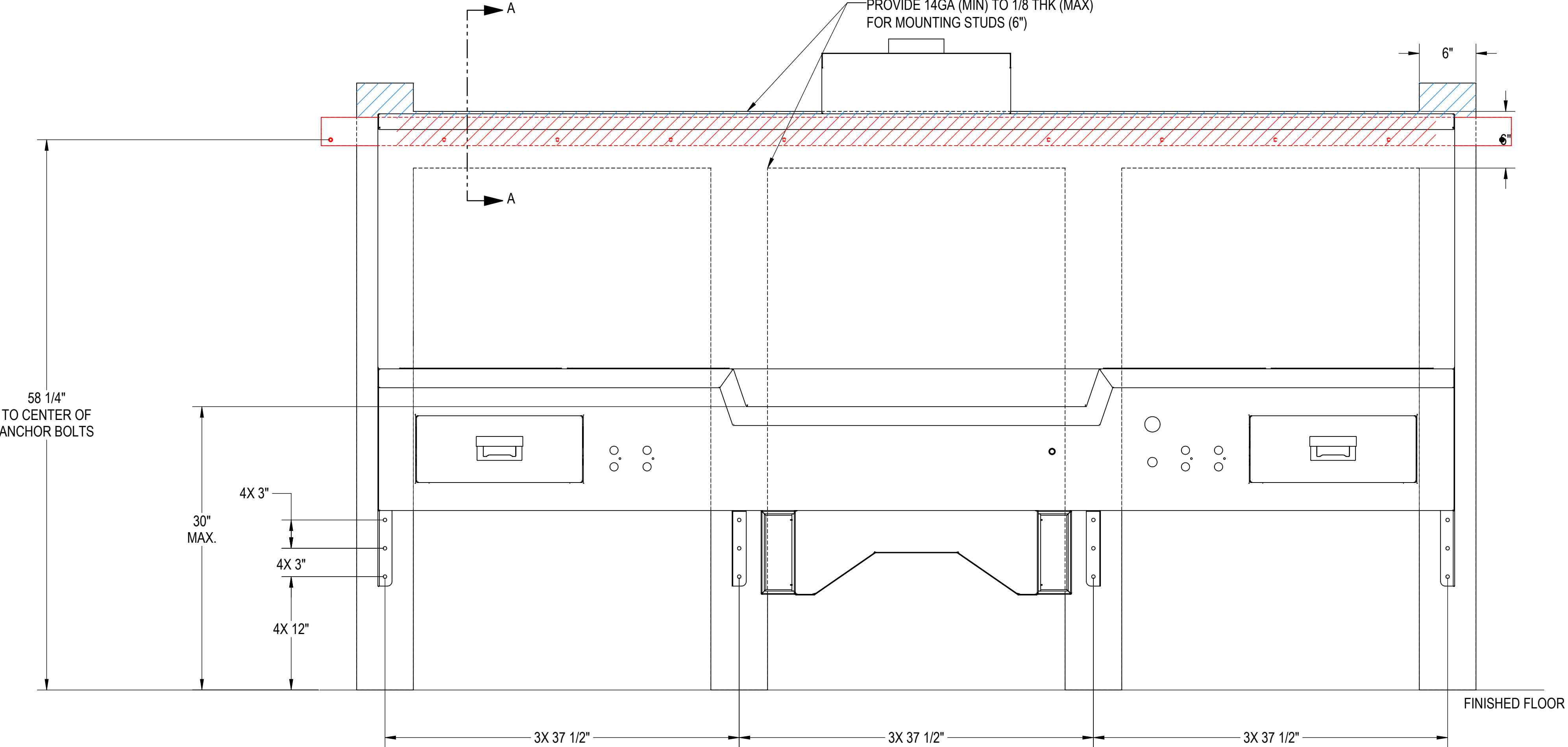
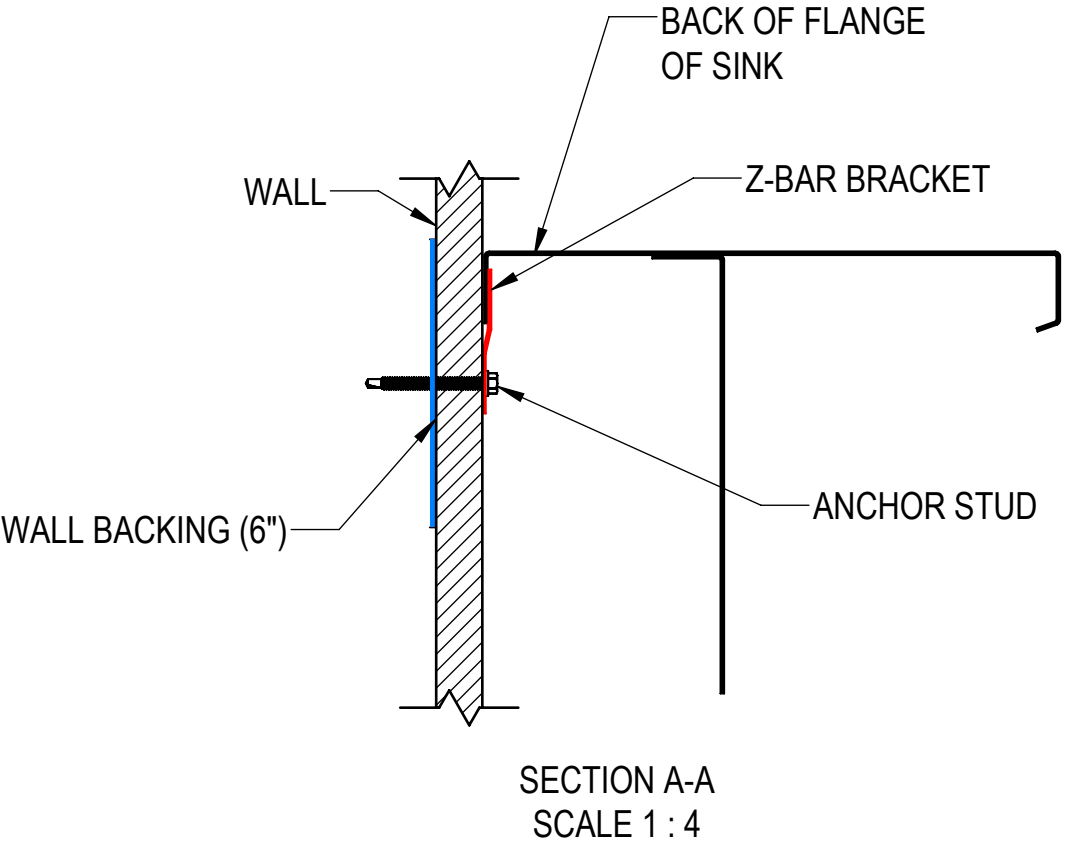
3. USE MINIMUM 1/4" TEK SCREWS 2 3/4" LONG. ADJUST LENGTH PER WALL THICKNESS.

4. ANCHORS USED MUST BE FLUSH TO Z-BAR AS MUCH AS POSSIBLE. THEY MUST NOT INTERFERE WITH PLUMBING BEHIND WALL.

5. THE LOWER ANCHORS ARE USED TO KEEP THE BOTTOM OF THE SINK FROM PULLING AWAY FROM THE WALL. THE Z-BAR HOLDS THE WEIGHT OF THE SINK.
6. USE MINIMUM OF (2) 1/4" TEK SCREWS PER LOWER GUSSET

7. INSTALLATION IS BASED ON ROUGH-IN MOUNTING DETAIL PROVIDED.

SUPPORT LOCATION FOR SINK MOUNTING ONLY.  
ADDITIONAL WALL SUPPORTS MAY BE REQUIRED.



CUSTOMER <div>CUSTOMER NAME</div>		APPROVAL		PROPRIETARY <div>THIS DOCUMENT AND THE DATE DISCLOSED HEREIN AND HEREWITH IS NOT TO BE REPRODUCED, USED, OR OTHERWISE DISCLOSED IN WHOLE OR IN PART TO ANYONE WITHOUT WRITTEN AUTHORIZATION FROM MORTECH MFG.</div>			<div><div><div>MOPEC GROUP</div><div><div>MOPEC</div><div>MORTECH</div><div><small>MORTALITY MANUFACTURING</small></div></div></div><div>411 North Aerojet Avenue Azusa, CA 91702 tel: (800) 410-0100 (626) 334-1471 fax: (626) 334-1704 <a href="http://www.mortechmfg.com">www.mortechmfg.com</a></div></div>				
PROJECT <div>PROJECT NAME</div>							TITLE <div>MODEL 1036-25C WALL MOUNT AUTOPSY STATION, CENTER SINK WALL-MOUNTING</div>				
		SIGNATURE		DATE		DO NOT SCALE DRAWING		APPROVALS		DATE	
						MATERIAL 304 STAINLESS STEEL		DRAWN BY F. YANEZ		09/13/19	
						FINISH #4 SATIN		CHECKED BY ELISEO S.		12/18/20	
								APPROVED BY			
								SCALE		1:8	
								NEXT ASSY.		SHEET 3 OF 3	
								DWG NO.		1036-25-CAP	
								REV.		X02	