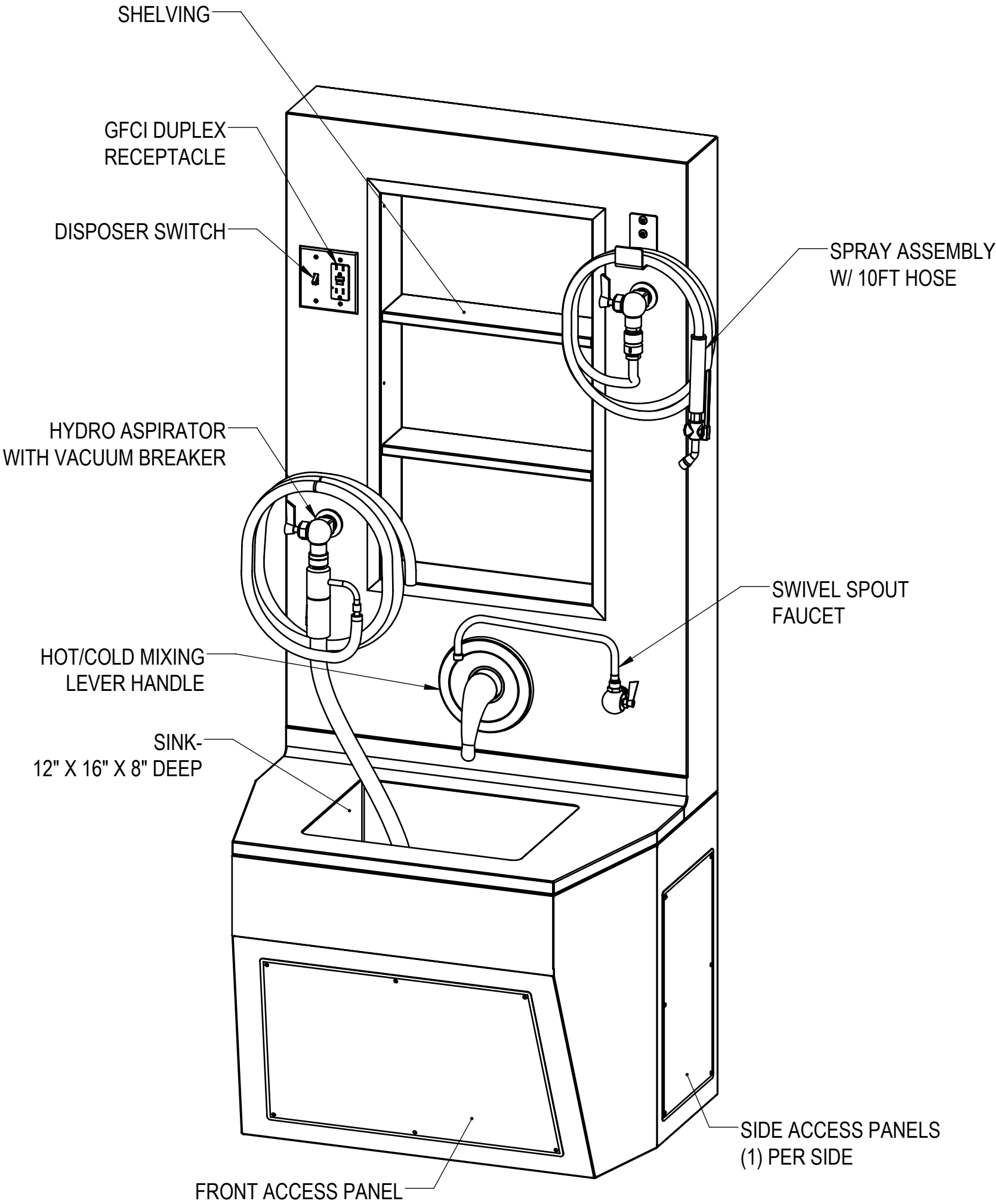
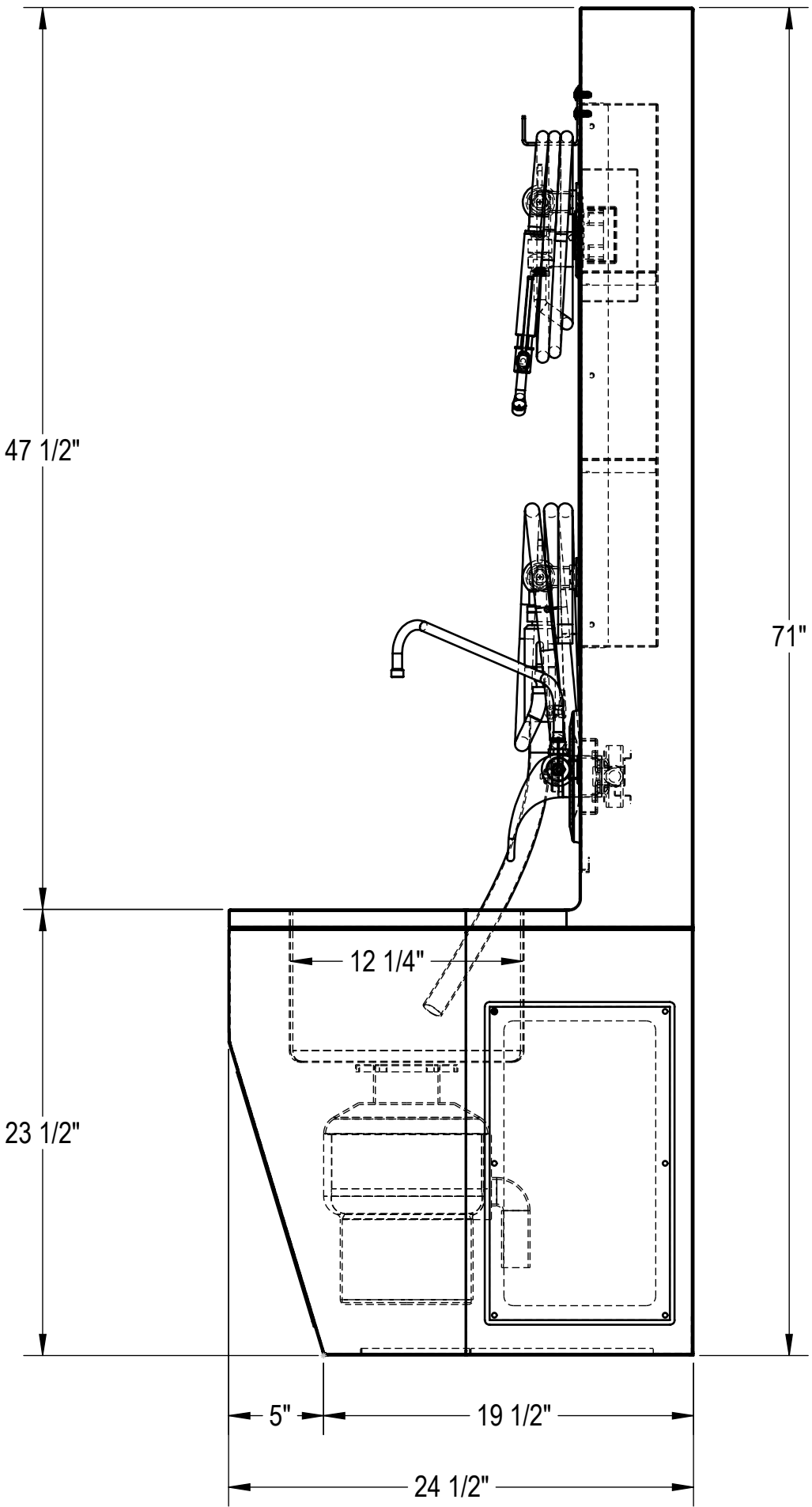
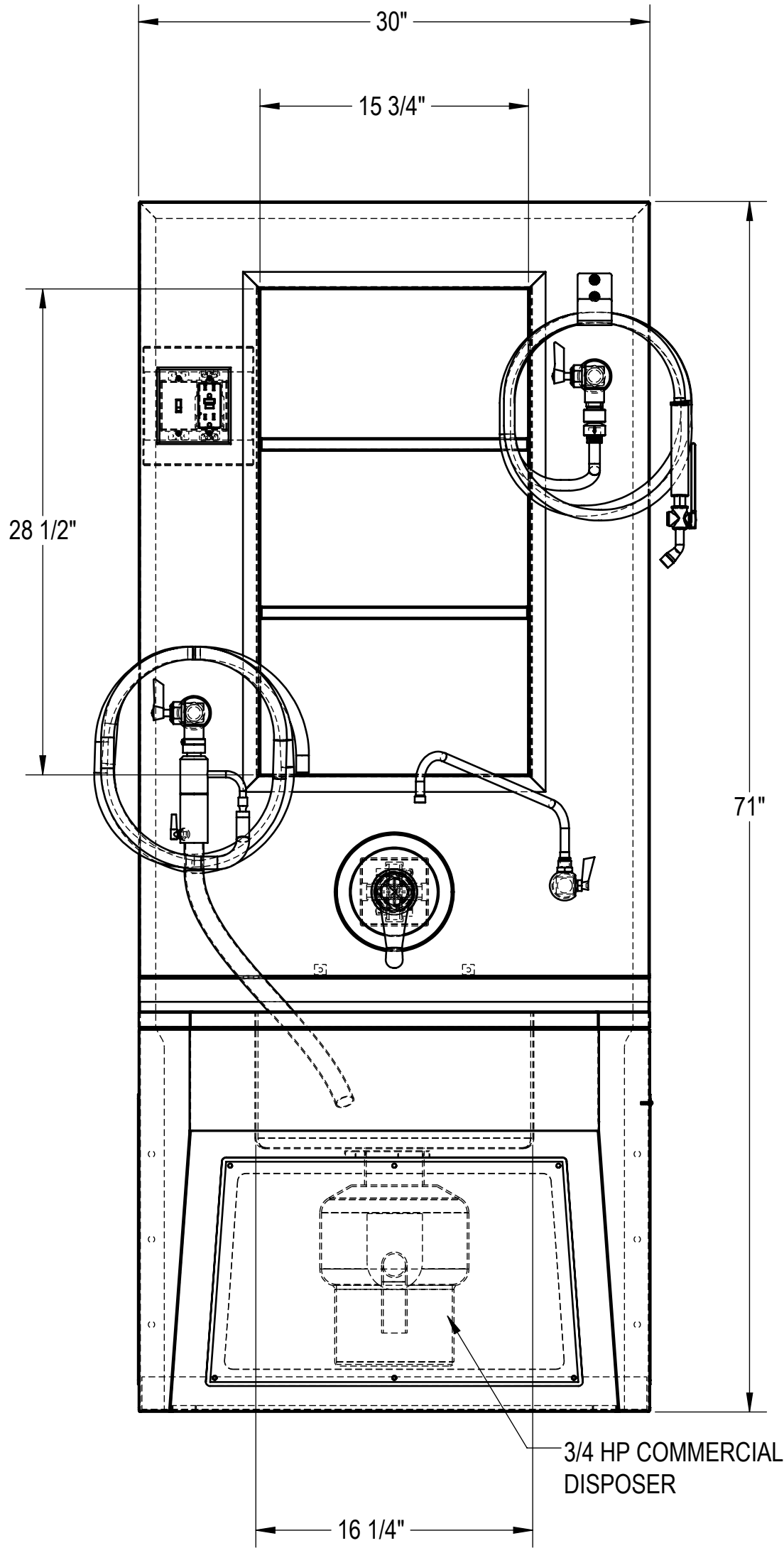


NOTES: UNLESS OTHERWISE SPECIFIED

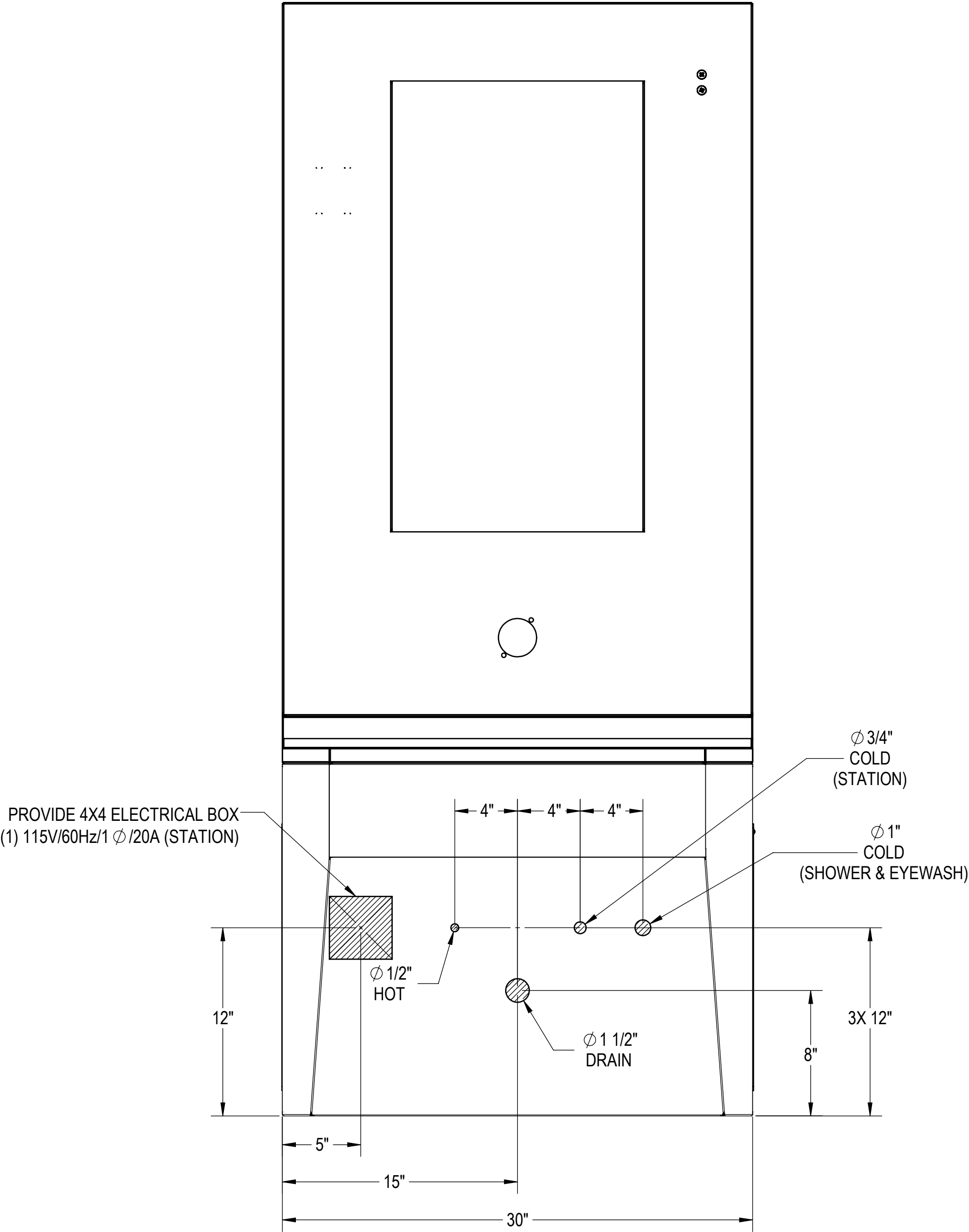
1. APPLICABLE STANDARDS AND SPECIFICATIONS;
ANSI Y14.5M, DIMENSIONS AND TOLERANCES
ANSI Y1.1, ABBREVIATIONS



CUSTOMER	APPROVAL		<div>PROPRIETARY</div> <div>THIS DOCUMENT AND THE DATE DISCLOSED HEREIN AND HEREWITH IS NOT TO BE REPRODUCED, USED, OR OTHERWISE DISCLOSED IN WHOLE OR IN PART TO ANYONE WITHOUT WRITTEN AUTHORIZATION FROM MORTECH MFG.</div>			<div><div><div><div>MOPEC</div><div>GROUP</div></div><div><div>MOPEC</div><div>MORTECH</div><div><small>MANUFACTURING</small></div></div></div><div>411 North Aerojet Avenue Azusa, CA 91702 tel: (800) 410-0100 (626) 334-1471 fax: (626) 334-1704 www.mortechmfg.com</div></div>					
PROJECT						TITLE		<div>MODEL 1036-2</div> <div>WALL-MOUNTED SERVICE STATION</div>			
SIGNATURE			DATE			SIZE		DWG NO.		REV.	
						C		1036-2-AP		X01	
						SCALE 1:8		SHEET 1 OF 3			
			DO NOT SCALE DRAWING			APPROVALS		DATE			
			MATERIAL			DRAWN BY				01/23/17	
			304 STAINLESS STEEL			ELISEO S.					
			FINISH			CHECKED BY					
			#4			APPROVED BY					

NOTES: UNLESS OTHERWISE SPECIFIED

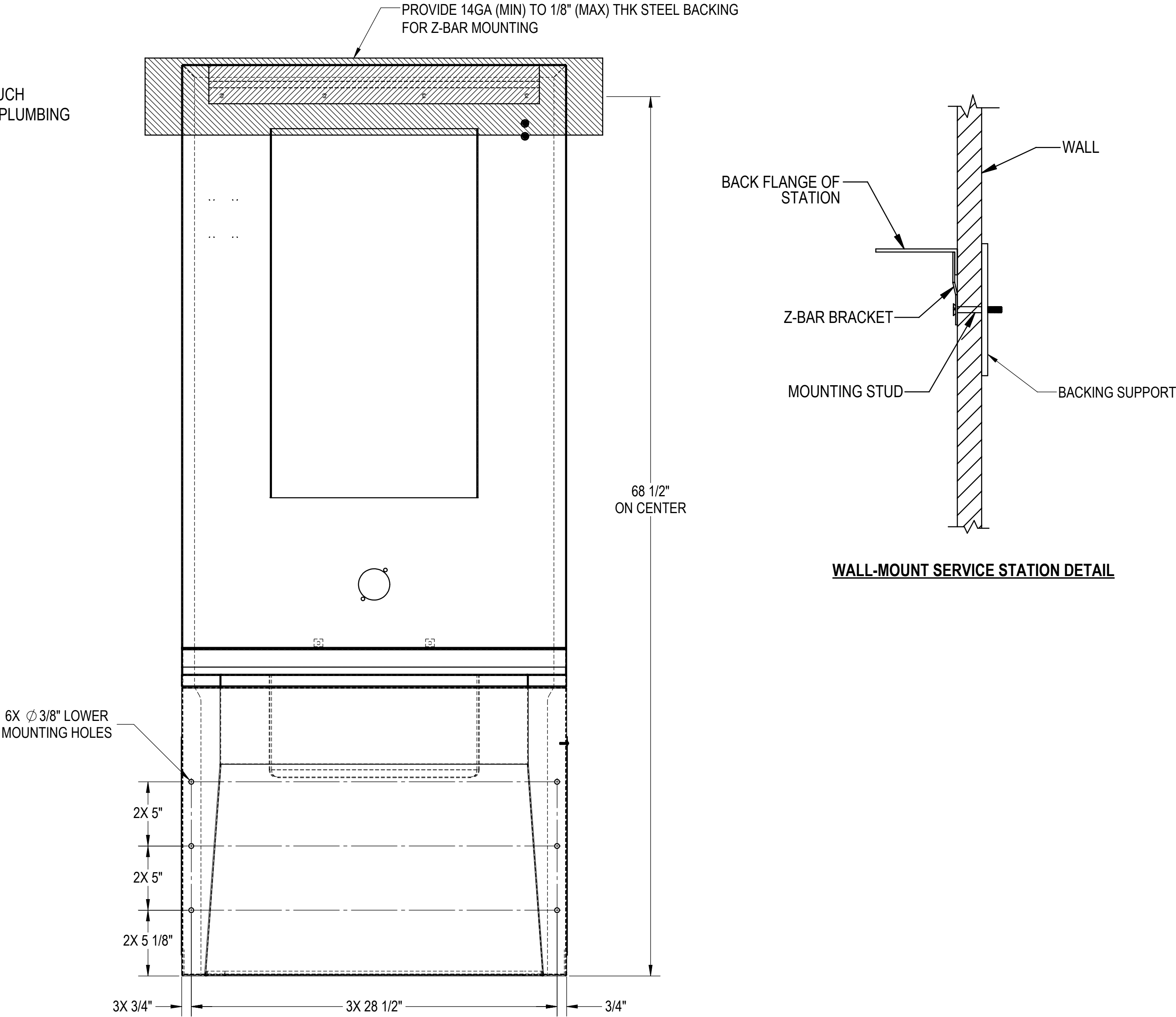
1. FLUSH LINES CLEAR BEFORE CONNECTING TO STATION.
2. PLUMBER TO PROVIDE SHUT-OFF VALVES FOR WATER CONNECTIONS AND P-TRAP FOR DRAIN.
3. PROVIDE 60-65 PSI WATER PRESSURE AND 4 GALLONS PER MINUTE OF FLOW FOR PROPER OPERATION OF HYDRO ASPIRATOR.
4. ELECTRICIAN TO PROVIDE LIQUID TIGHT JUNCTION BOX AND CONDUIT CONNECTIONS PER LOCAL CODES.



CUSTOMER	APPROVAL		PROPRIETARY THIS DOCUMENT AND THE DATE DISCLOSED HEREIN AND HEREWITH IS NOT TO BE REPRODUCED, USED, OR OTHERWISE DISCLOSED IN WHOLE OR IN PART TO ANYONE WITHOUT WRITTEN AUTHORIZATION FROM MORTECH MFG.			MOPEC GROUP Mopec MORTECH MANUFACTURING	411 North Aerojet Avenue Azusa, CA 91702 tel: (800) 410-0100 (626) 334-1471 fax: (626) 334-1704 www.mortechmfg.com		
PROJECT	SIGNATURE		DATE		DO NOT SCALE DRAWING	APPROVALS	DATE	TITLE	
					MATERIAL	DRAWN BY	CHECKED BY	MODEL 1036-2	
					304 STAINLESS STEEL	ELISEO S.	01/23/17	WALL-MOUNTED SERVICE STATION	
					FINISH	APPROVED BY		ROUGH-INS	REV.
					#4			1036-2-AP	X01
								SCALE 1:6	SHEET 2 OF 3

NOTES: UNLESS OTHERWISE SPECIFIED

- 1. Z-BAR SHIPPED WITHOUT MOUNTING HOLES FOR ADOPTION TO FIELD CONDITIONS. HOLES TO BE DRILLED BY INSTALLER.
- 2. INSTALL ANCHORS AS NEEDED.
- 3. ANCHORS USED MUST BE FLUSH TO Z-BAR AS MUCH AS POSSIBLE. THEY MUST NOT INTERFERE WITH PLUMBING BEHIND WALL.



CUSTOMER		APPROVAL		<div>PROPRIETARY</div> <div>THIS DOCUMENT AND THE DATE DISCLOSED HEREIN AND HERewith IS NOT TO BE REPRODUCED, USED, OR OTHERWISE DISCLOSED IN WHOLE OR IN PART TO ANYONE WITHOUT WRITTEN AUTHORIZATION FROM MORTECH MFG.</div>			<div><div><div><div>MOPEC</div><div>GROUP</div></div><div><div>MOPEC</div><div>MANUFACTURING</div></div></div><div>411 North Aerojet Avenue Azusa, CA 91702 tel: (800) 410-0100 (626) 334-1471 fax: (626) 334-1704 www.mortechmfg.com</div></div>										
PROJECT							TITLE		<div>MODEL 1036-2</div> <div>WALL-MOUNTED SERVICE STATION</div> <div>WALL-MOUNTING</div>								
		SIGNATURE		DATE		MATERIAL		DRAWN BY		DATE		SIZE		DWG NO.		REV.	
						304 STAINLESS STEEL		ELISEO S.		01/23/17		C				X01	
						FINISH		CHECKED BY				SCALE					
						#4		APPROVED BY				1:6				SHEET 3 OF 3	