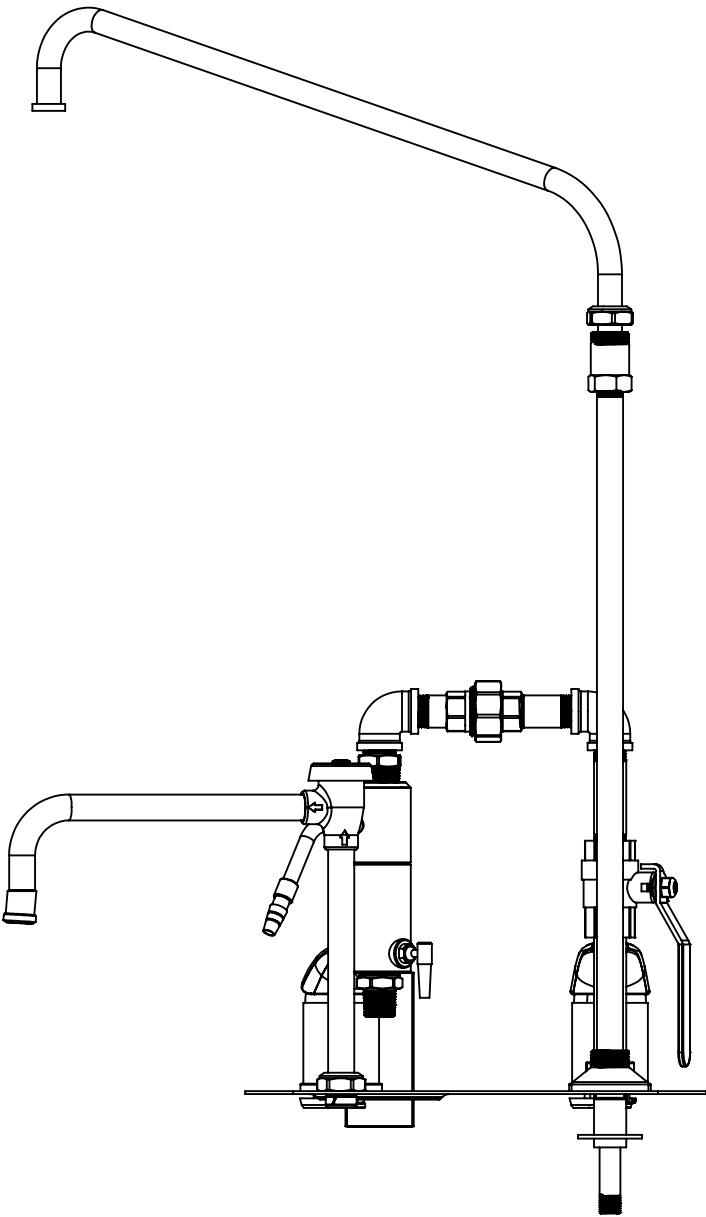
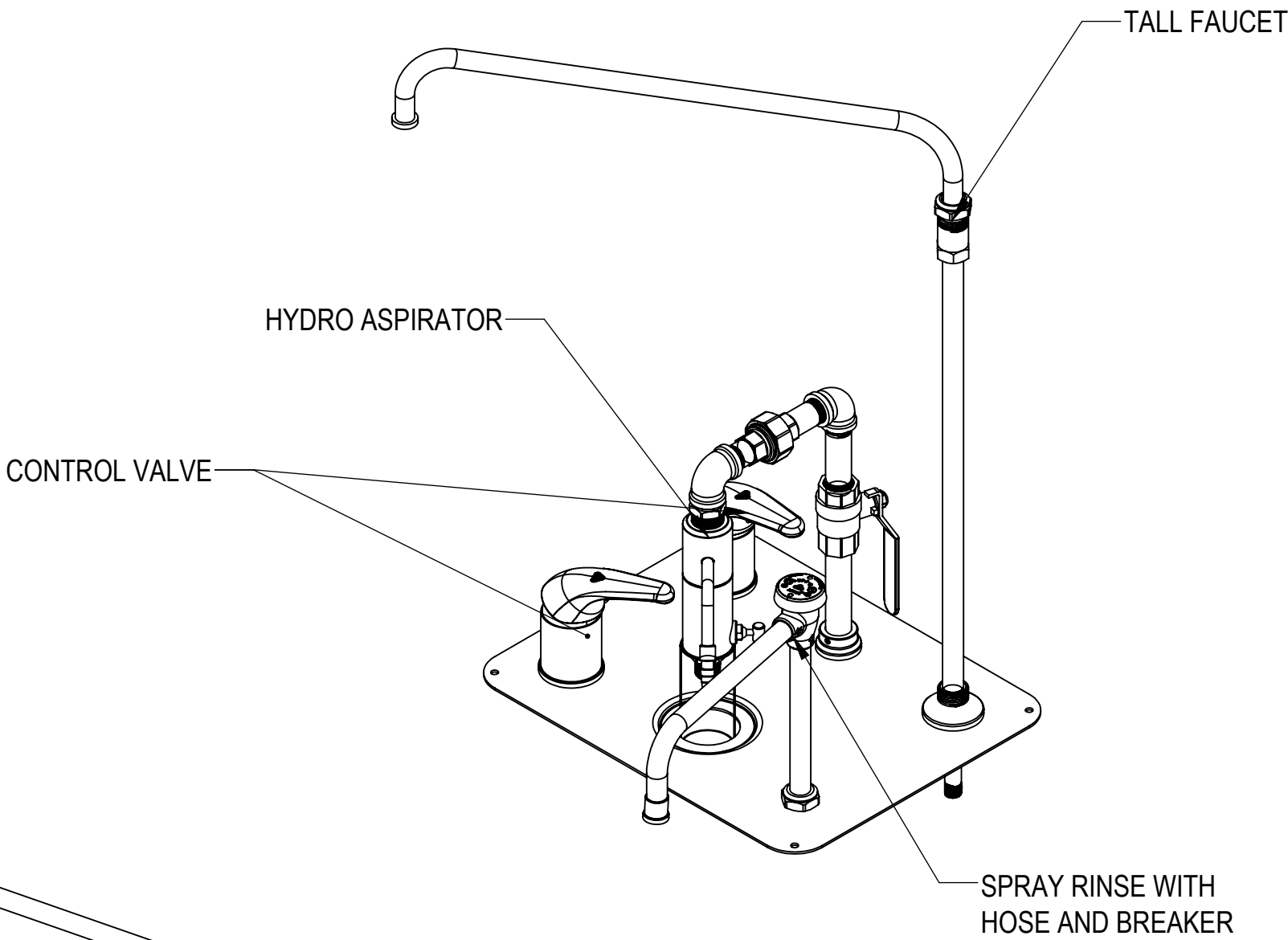
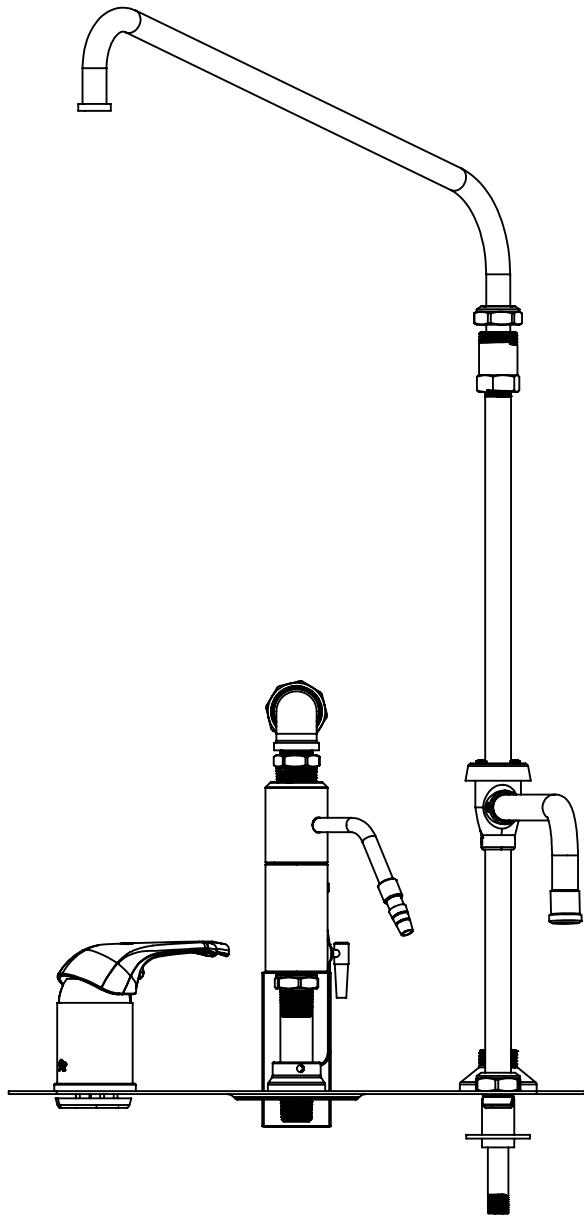
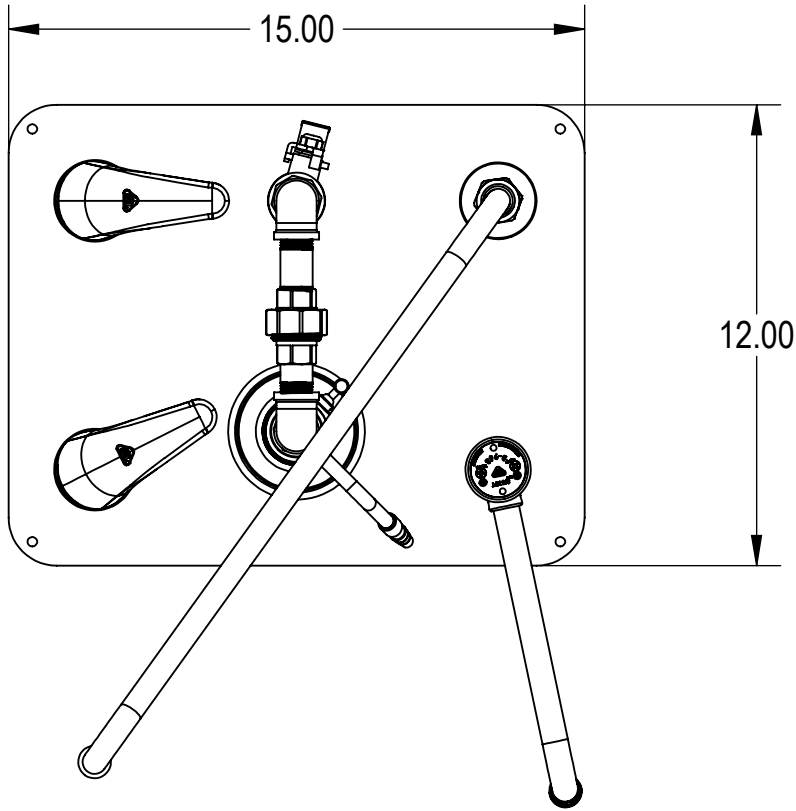


NOTES: UNLESS OTHERWISE SPECIFIED

1. APPLICABLE STANDARDS AND SPECIFICATIONS;
ASME Y14.5-2009, DIMENSIONING AND TOLERANCING
ASME Y14.5-2007, ABBREVIATIONS

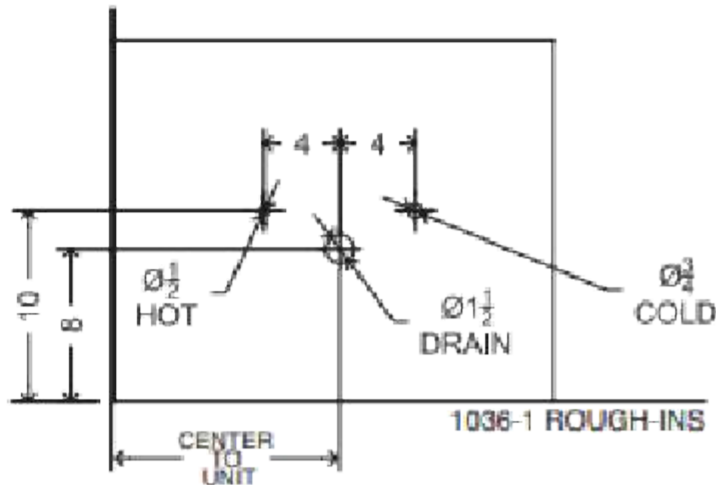
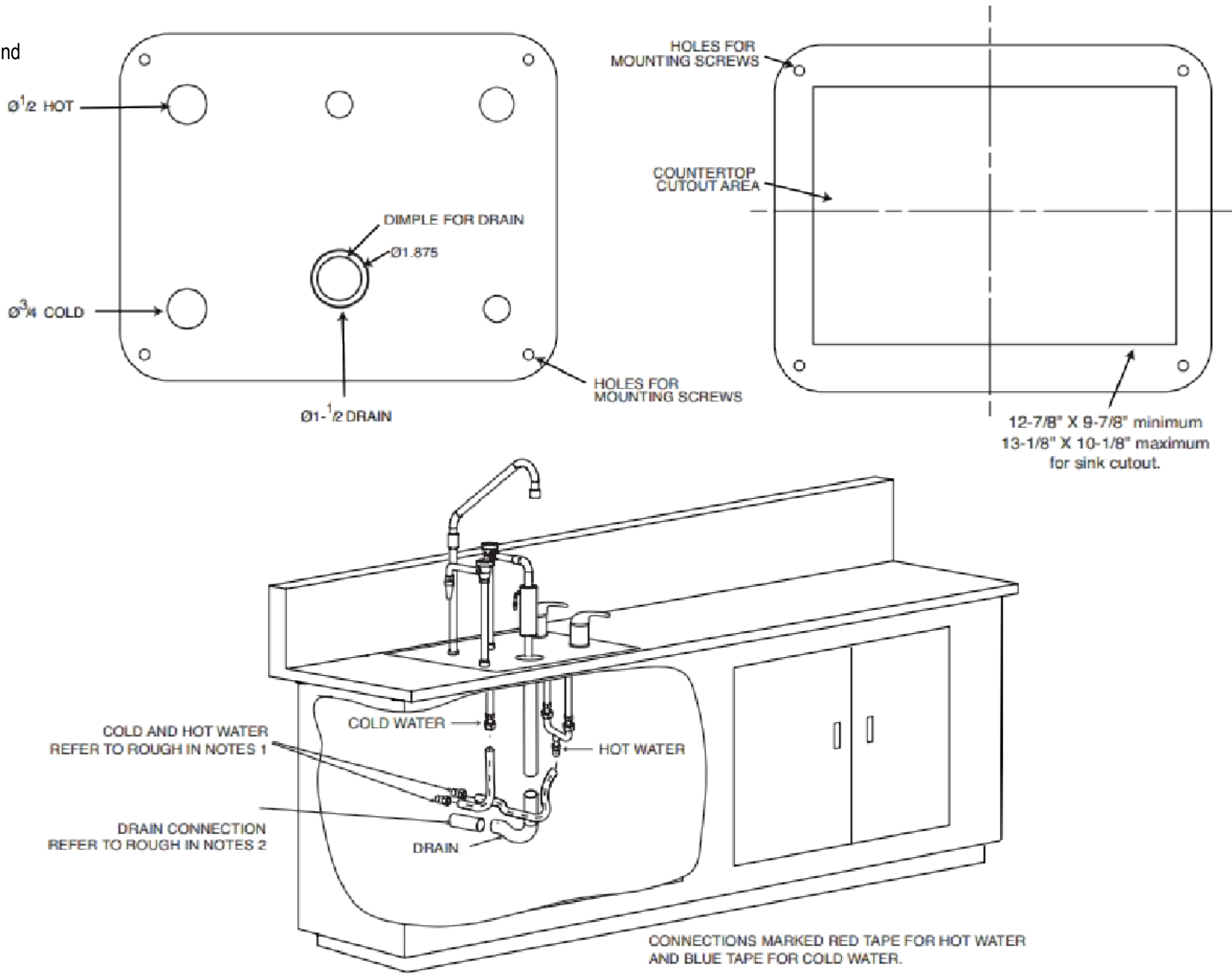
REVISIONS				
REV.	DCN#	DESCRIPTION	DATE	CHANGED/APPROVED
X01	-	PRELIMIANRY RELEASE	02/12/25	EL/



CUSTOMER		APPROVAL		PROPRIETARY		MOPEC GROUP		411 North Aerojet Avenue Azusa, CA 91702	
PROJECT				THIS DOCUMENT AND THE DATE DISCLOSED HEREIN AND HEREWITH IS NOT TO BE REPRODUCED, USED, OR OTHERWISE DISCLOSED IN WHOLE OR IN PART TO ANYONE WITHOUT WRITTEN AUTHORIZATION FROM MORTECH MFG.		ISO 9001:2015 CERTIFIED COMPANY		tel: (800) 410-0100 (626) 334-1471 fax: (626) 334-1704 www.mortechmfg.com	
CUSTOMER NAME				DO NOT SCALE DRAWING		APPROVALS		DATE	
LINE 1				MATERIAL		CHECKED BY			
LINE 2				FINISH		APPROVED BY			
		SIGNATURE		DATE					
				304 SS					
				GRAINED					

NOTES: UNLESS OTHERWISE SPECIFIED

1. A 12-7/8" X 9-7/8" minimum and a 13-1/8" X 10-1/8" maximum area for inlet plumbing to include the following: One (1) cold water supply, 3/4". One (1) hot water supply, 1/2" Supply shut off valves at each water supply.
Provide 58-60 lbs. water pressure and 4 gallons per minute of flow for proper operation of hydro aspirator.
2. One (1) standard 1-1/2" waste line
Plumber to provide shut off valve for water connection and P-Trap for drain.



CUSTOMER	APPROVAL		PROPRIETARY		MOPEC GROUP		411 North Aerojet Avenue Azusa, CA 91702 tel: (800) 410-0100 (626) 334-1471 fax: (626) 334-1704 www.mortechmfg.com	
PROJECT	SIGNATURE		DATE	DO NOT SCALE DRAWING		APPROVALS		DATE
LINE 1				MATERIAL		CHECKED BY		
LINE 2				FINISH		APPROVED BY		
				THIS DOCUMENT AND THE DATE DISCLOSED HEREIN AND HERewith IS NOT TO BE REPRODUCED, USED, OR OTHERWISE DISCLOSED IN WHOLE OR IN PART TO ANYONE WITHOUT WRITTEN AUTHORIZATION FROM MORTECH MFG.		TITLE		
				304 SS		MODEL # 1036-1R		
				GRAINED		ROUGH IN		
						1036-1R-AP		REV. X01
						SCALE 1:5		SHEET 2 OF 2