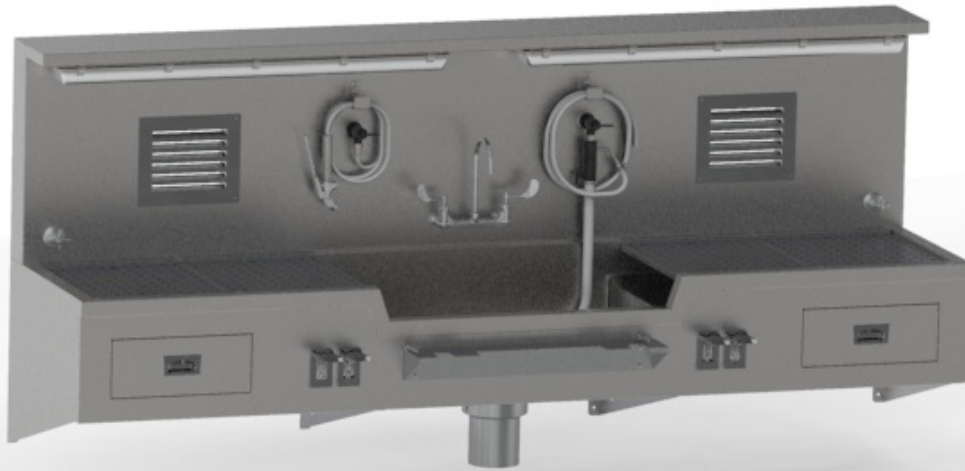


# Wall Mounted Autopsy Station, Center Sink

Mopec's Wall-Mounted Autopsy Stations are a durable, stainless steel workstation designed for professional pathology and mortuary environments. It offers a spacious, easy-to-clean work surface with efficient drainage, integrated utilities, and features that support smooth workflow and sanitation. With built-in lighting, storage, waste handling, and compatibility with Mopec carts, this line is reliable for everyday use in demanding settings.



1036-10

## SPECIFICATIONS

### Construction

- TÜV Certified
- Grid plate work surfaces with 1/2" recessed holes for drainage
- 10' Spray hose assembly that can reach the length of the sink
- (2) Large instrument drawers
- (2) End rinses that drain into a common sink
- Cart latch works with most Mopec Carts except those with hydraulic bases
- Wall mounted passive ventilation through Facility-provided HVAC
- Cart-latch mechanism with operation handle which can be accessed from either side of the carrier
- Plumbing and electrical lines are factory-installed and require only minimum installation
- (2) GFCI duplex receptacle with waterproof cover
- Heavy-duty commercial waste disposer, 1/2 hp and (2) switches
- Light fixtures over work areas
- Deluxe aspirator with reverse flow for additional waste removal: "reverse flow" feature instantly relieves suction clogging by providing a reverse flow of water

### Utilities / Power

- 2-duplex GFCI 120V / 60Hz outlets, Requires 2- 15-amp circuits, one for station, one for disposal
- 1/2" Hot water, 3/4" Cold Water connection dropping to 1/2" after RPZ valve, and 1-1/2" Drain for water hookup
- Provide 60-65 psi of water pressure at 4 Gallons per minute for proper operation of hydro aspirator
- Uses facility ventilation Capable of 700CFM at 0.25 w.g.
- Recommended Supply 300-350 CFM X 2 Grilles, 600-700 CFM total

### Materials

- 14-18 gauge 304 stainless steel with a #4 finish
- Pex piping for plumbing purposes
- Chrome plated brass fixtures

### Dimensions

- 114" L x 29" W X 50" H
- Sink Dimensions: 16" L X 30" W X 6.0" D

**MOPEC**  
GROUP

**Mopec**  
ELEVATING PATHOLOGY

**MORTECH**  
MANUFACTURING

[www.mopecgroup.com](http://www.mopecgroup.com)

800.362.8491

800 Tech Row, Madison Heights, MI