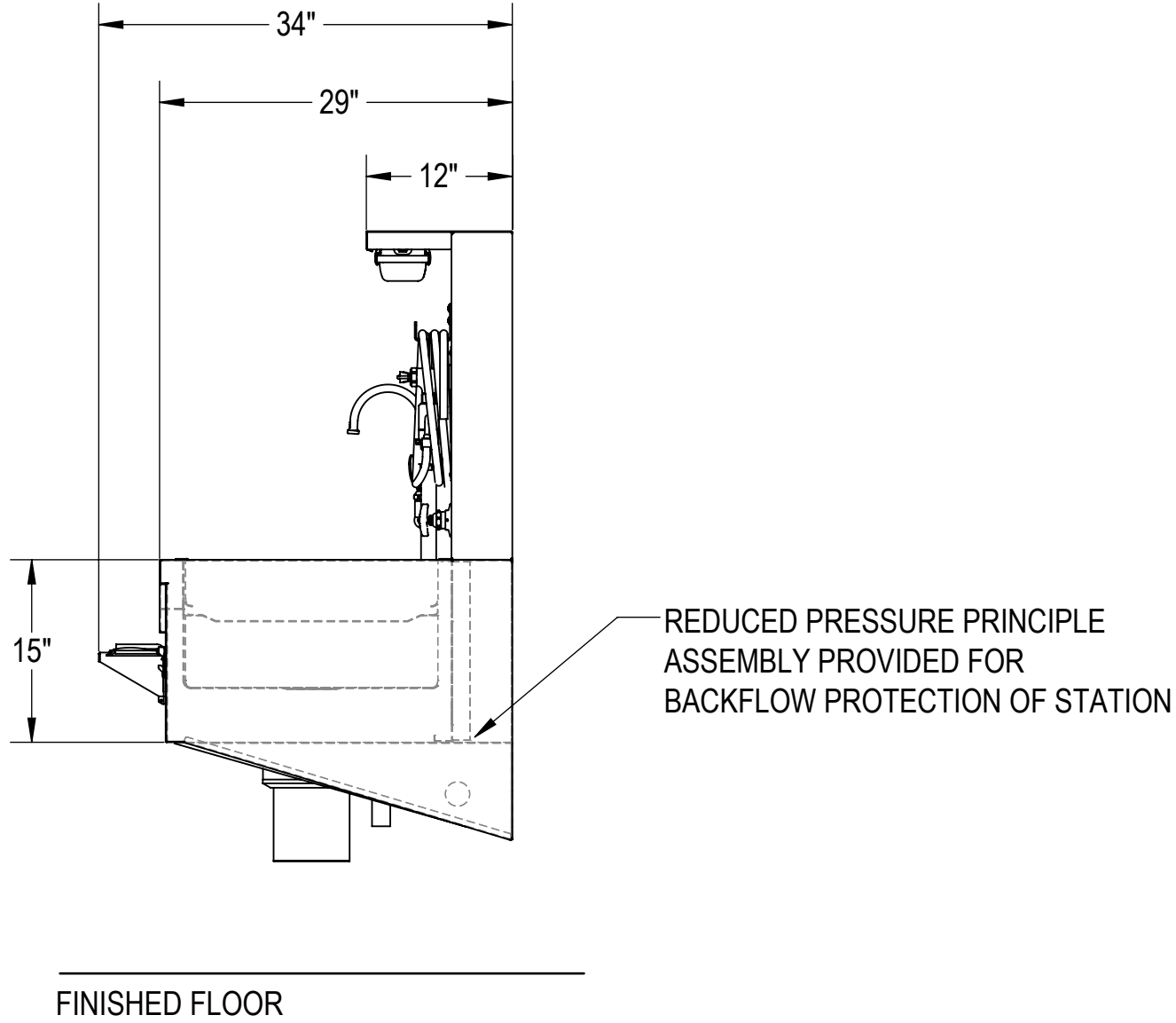
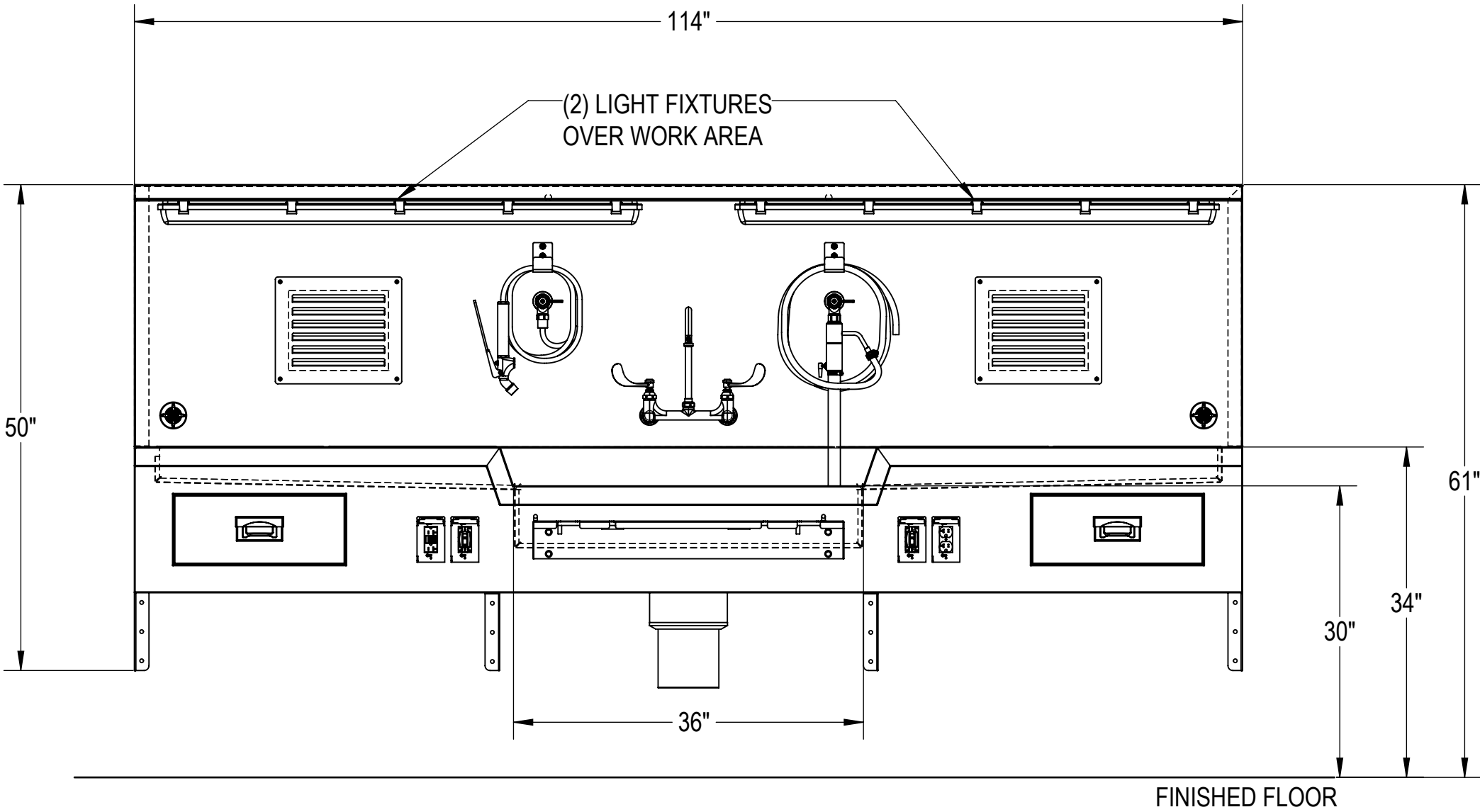
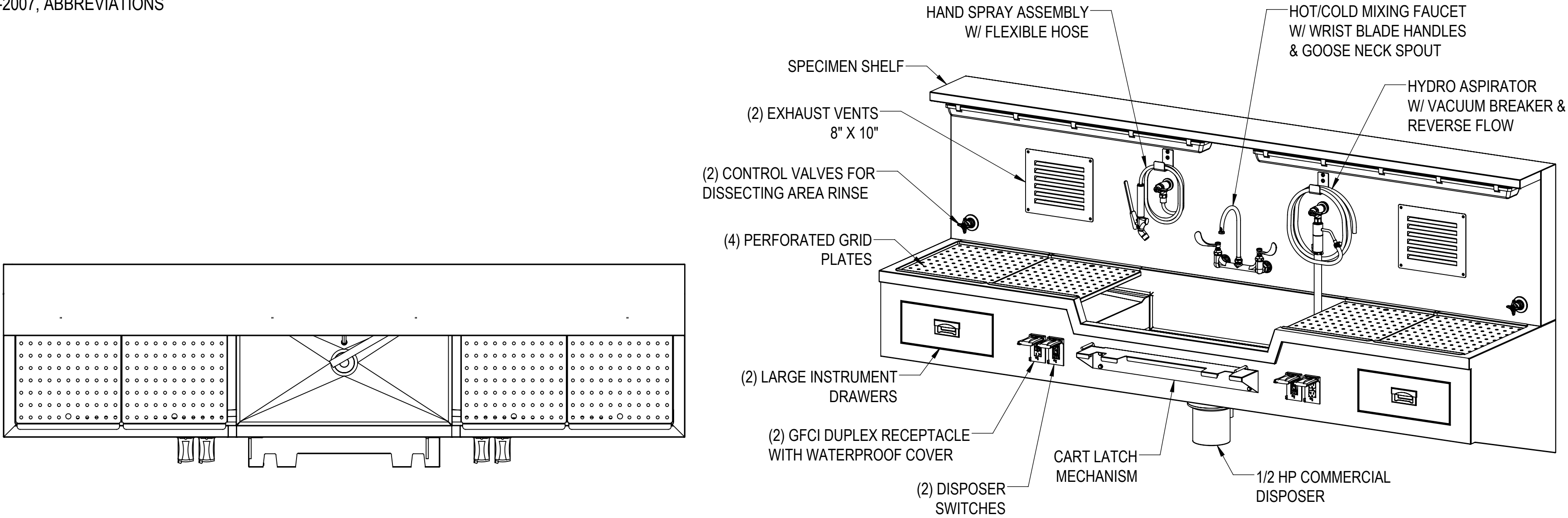


NOTES: UNLESS OTHERWISE SPECIFIED

1. APPLICABLE STANDARDS AND SPECIFICATIONS;
ASME Y14.5-2009, DIMENSIONING AND TOLERANCING
ASME Y14.38-2007, ABBREVIATIONS

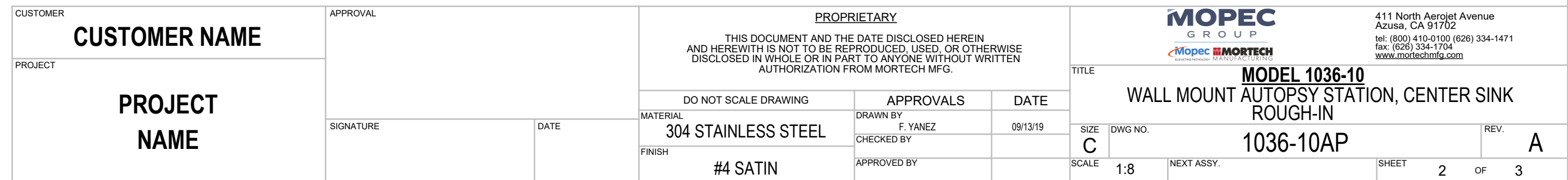
REVISIONS				
REV.	DCN#	DESCRIPTION	DATE	CHANGED/APPROVED
A		PRELIMINARY RELEASE	9/13/2019	FY



CUSTOMER CUSTOMER NAME		APPROVAL		PROPRIETARY THIS DOCUMENT AND THE DATE DISCLOSED HEREIN AND HEREWITH IS NOT TO BE REPRODUCED, USED, OR OTHERWISE DISCLOSED IN WHOLE OR IN PART TO ANYONE WITHOUT WRITTEN AUTHORIZATION FROM MORTECH MFG.		MOPEC GROUP 411 North Aerojet Avenue Azusa, CA 91702 tel: (800) 410-0100 (626) 334-1471 fax: (626) 334-1704 www.mortechmfg.com	
PROJECT PROJECT NAME		SIGNATURE					
		DATE		DO NOT SCALE DRAWING		APPROVALS	
				MATERIAL 304 STAINLESS STEEL		DRAWN BY F. YANEZ	
				FINISH #4 SATIN		CHECKED BY	
						APPROVED BY	
						DATE 09/13/19	
						TITLE MODEL 1036-10	
						WALL MOUNT AUTOPSY STATION, CENTER SINK	
						SIZE C	
						DWG NO. 1036-10AP	
						REV. A	
						SCALE 1:14	
						NEXT ASSY.	
						SHEET 1	
						OF 3	

1. FLUSH LINES CLEAR BEFORE CONNECTING TO STATION.
2. PLUMBER TO PROVIDE SHUT-OFF VALVES FOR WATER CONNECTIONS AND P-TRAP FOR DRAIN.
3. PROVIDE 60-65 PSI WATER PRESSURE AND 4 GALLONS PER MINUTE OF FLOW FOR PROPER OPERATION OF HYDRO ASPIRATOR.
4. ELECTRICIAN TO PROVIDE LIQUID TIGHT JUNCTION BOX AND CONDUIT CONNECTIONS PER LOCAL CODES.
5. RECOMMENDED EXHAUST: 300-350 CFM PER EXHAUST GRILLE WITH APPROXIMATE PRESSURE DROP OF .25 W.G.
6. EXHAUST ROUGH-IN SHOWN AS UNEXPOSED CONNECTION THROUGH REAR OF UNIT.

- BACK FLOW PREVENTION PROVIDED REDUCED PRESSURE
ZONE ASSEMBLY WITH AIR GAP. PROJECT PLUMBER TO
CONNECT TO BUILDING DRAIN.



WALL MOUNTING NOTES:

1. Z-BAR SHIPPED WITHOUT MOUNTING HOLES FOR ADOPTION TO FIELD CONDITIONS. HOLES TO BE DRILLED BY INSTALLER.

2. INSTALL MINIMUM (11) UPPER ANCHORS..
FIRST HOLE: 1" IN FROM SIDE OF Z-BAR.
Z-BAR LENGTH: 110" LONG.
ADDITIONAL ANCHORS CAN BE ADDED AS NEEDED.

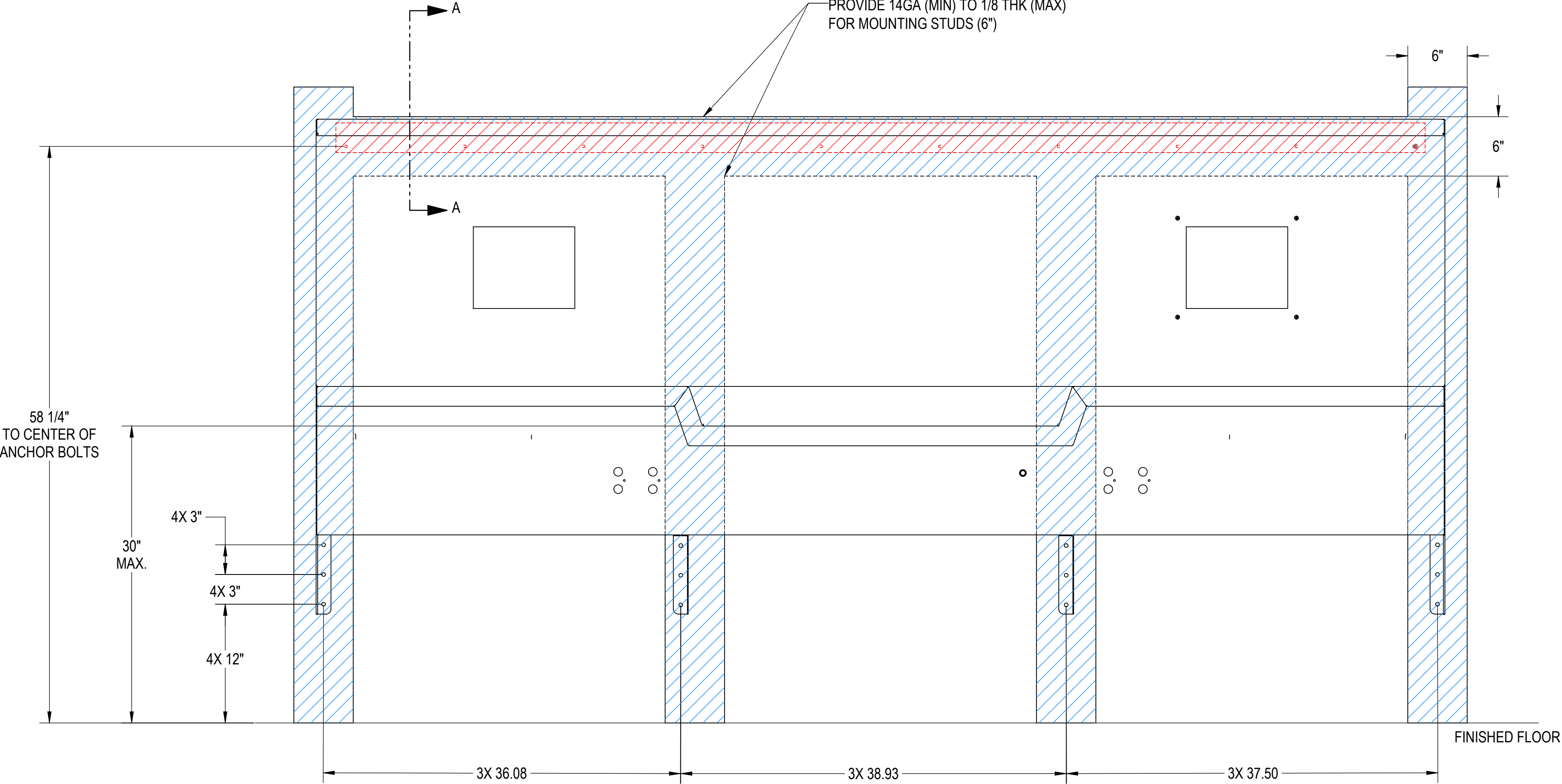
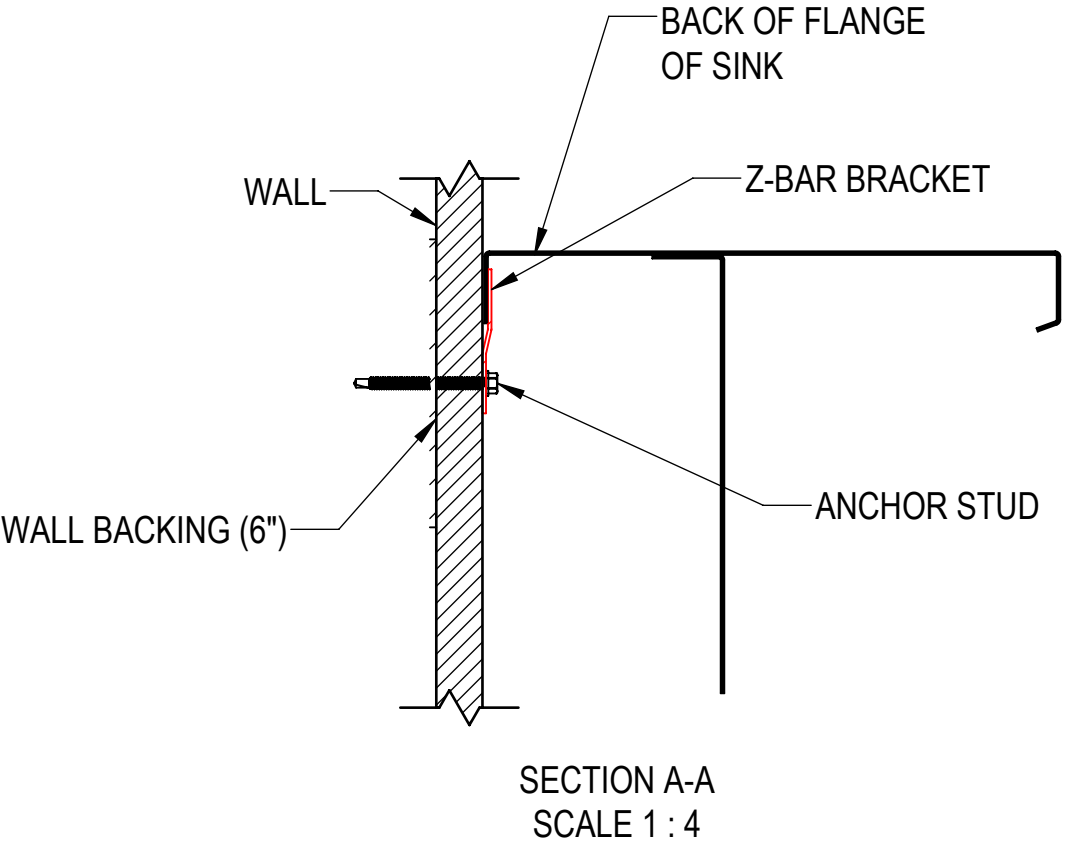
3. USE MINIMUM 1/4" TEK SCREWS 2 3/4" LONG. ADJUST LENGTH PER WALL THICKNESS.

4. ANCHORS USED MUST BE FLUSH TO Z-BAR AS MUCH AS POSSIBLE. THEY MUST NOT INTERFERE WITH PLUMBING BEHIND WALL.

5. THE LOWER ANCHORS ARE USED TO KEEP THE BOTTOM OF THE SINK FROM PULLING AWAY FROM THE WALL. THE Z-BAR HOLDS THE WEIGHT OF THE SINK.
6. USE MINIMUM OF (2) 1/4" TEK SCREWS PER LOWER GUSSET

7. INSTALLATION IS BASED ON ROUGH-IN MOUNTING DETAIL PROVIDED.

SUPPORT LOCATION FOR SINK MOUNTING ONLY.
ADDITIONAL WALL SUPPORTS MAY BE REQUIRED.



CUSTOMER CUSTOMER NAME		APPROVAL		PROPRIETARY		MOPEC GROUP		411 North Aerojet Avenue Azusa, CA 91702 tel: (800) 410-0100 (626) 334-1471 fax: (626) 334-1704 www.mortechmfg.com	
PROJECT PROJECT NAME		SIGNATURE		DATE		THIS DOCUMENT AND THE DATE DISCLOSED HEREIN AND HERewith IS NOT TO BE REPRODUCED, USED, OR OTHERWISE DISCLOSED IN WHOLE OR IN PART TO ANYONE WITHOUT WRITTEN AUTHORIZATION FROM MORTECH MFG.		TITLE MODEL 1036-10 WALL MOUNT AUTOPSY STATION, CENTER SINK WALL-MOUNTING	
						DO NOT SCALE DRAWING		APPROVALS	
						MATERIAL 304 STAINLESS STEEL		DRAWN BY F. YANEZ	
						FINISH #4 SATIN		CHECKED BY	
								APPROVED BY	
								DATE 09/13/19	
								SIZE C	
								DWG NO. 1036-10AP	
								SCALE 1:8	
								NEXT ASSY.	
								SHEET 3	
								OF 3	
								REV. A	