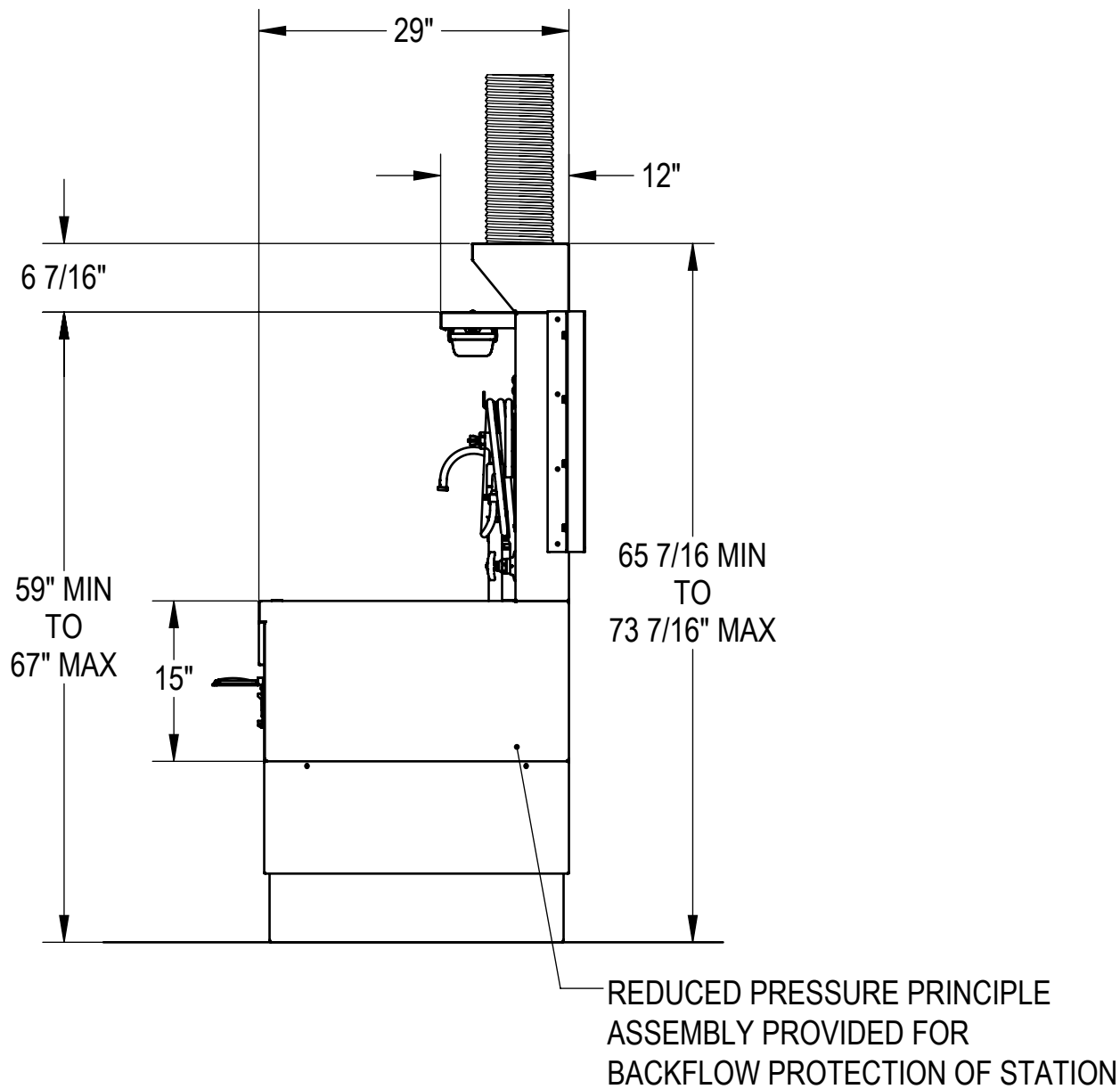
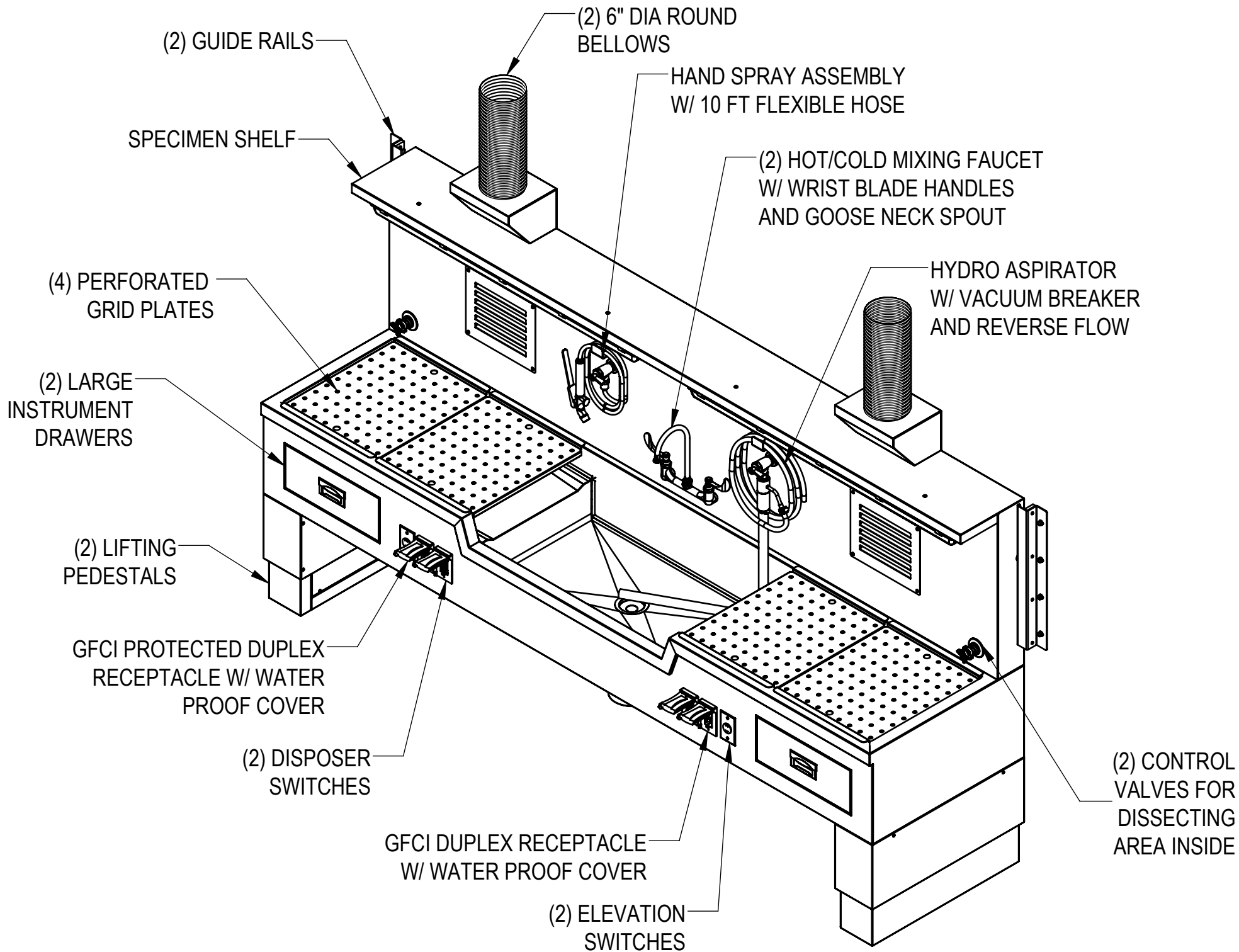
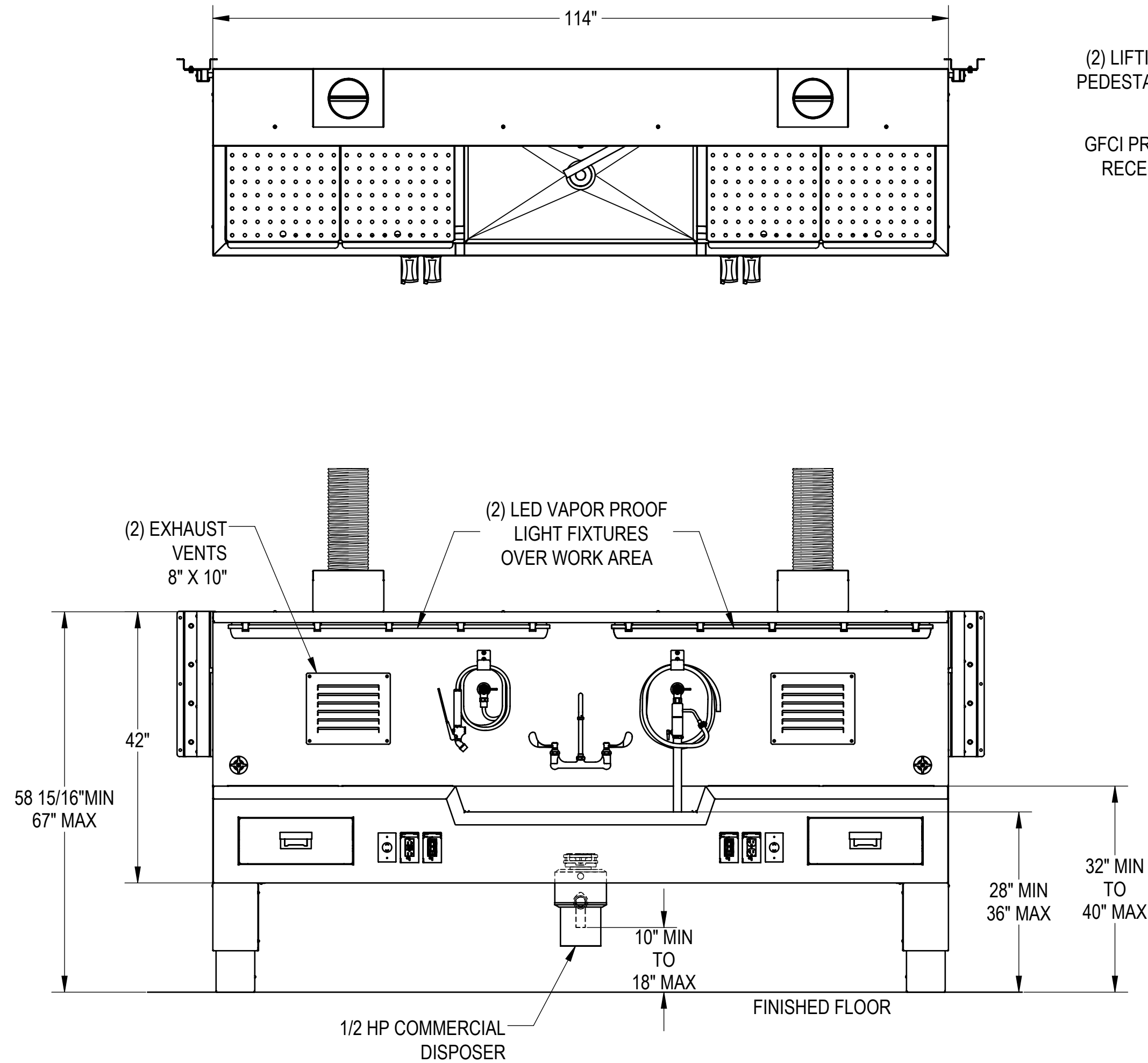


NOTES: UNLESS OTHERWISE SPECIFIED

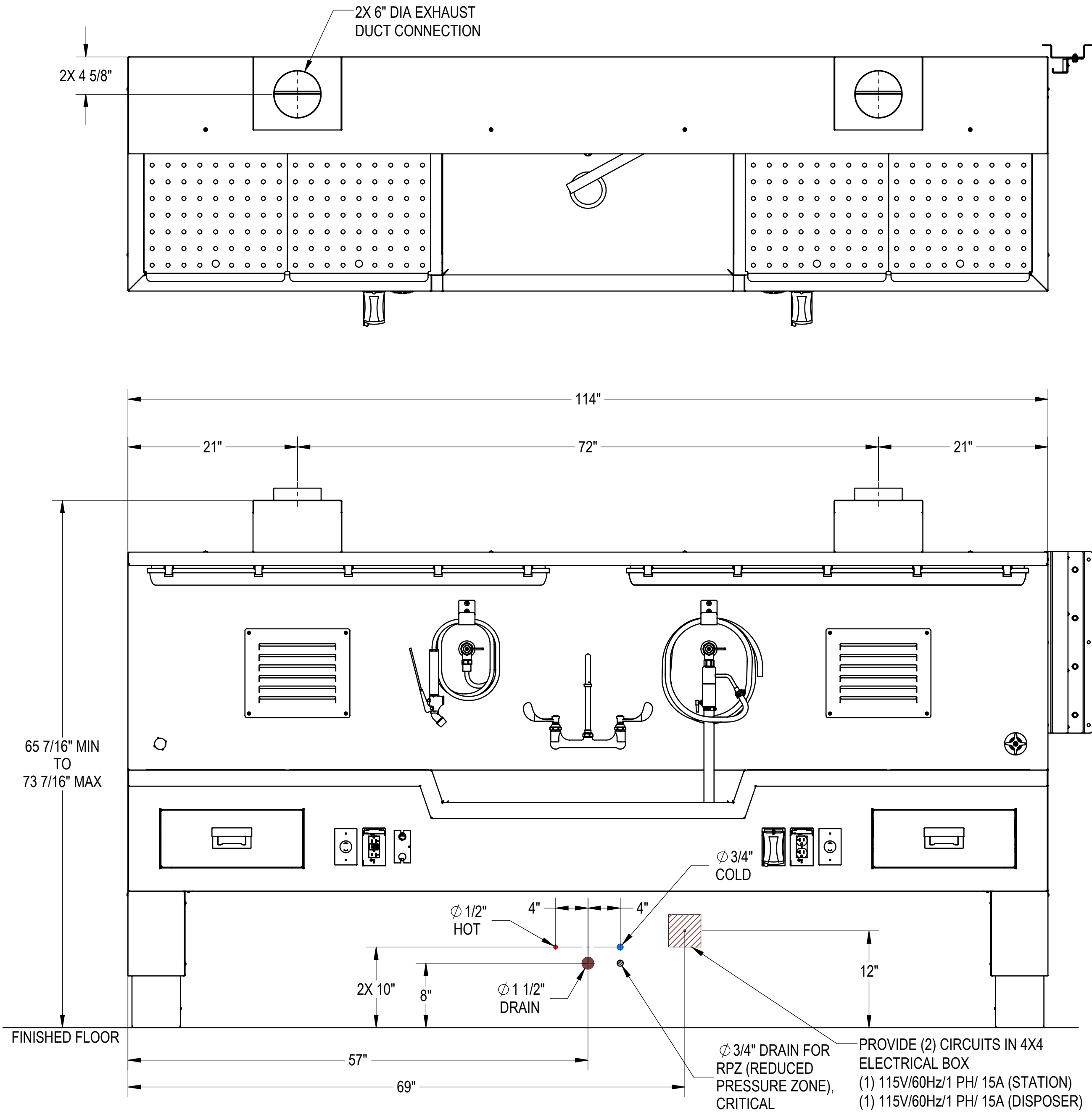
1. APPLICABLE STANDARDS AND SPECIFICATIONS;
ASMEY14.5-2009, DIMENSIONING AND TOLERANCING
ASME Y14.5-2007, ABBREVIATIONS



CUSTOMER		APPROVAL		PROPRIETARY		MOPEC GROUP		411 North Aerojet Avenue Azusa, CA 91702 tel: (800) 410-0100 (626) 334-1471 fax: (626) 334-1704 www.mortechmfg.com	
PROJECT		SIGNATURE		DATE		DO NOT SCALE DRAWING		APPROVALS	
						MATERIAL		DRAWN BY	
						304 STAINLESS STEEL		LUIS F.	
						FINISH		CHECKED BY	
						#4 SATIN		APPROVED BY	
								DATE	
								06/06/19	
								SIZE	
								C	
								DWG NO.	
								1036-10A-AP	
								SCALE	
								1:16	
								NEXT ASSY.	
								SHEET	
								1	
								OF	
								4	
								REV.	
								X01	

UTILITY REQUIREMENT NOTES

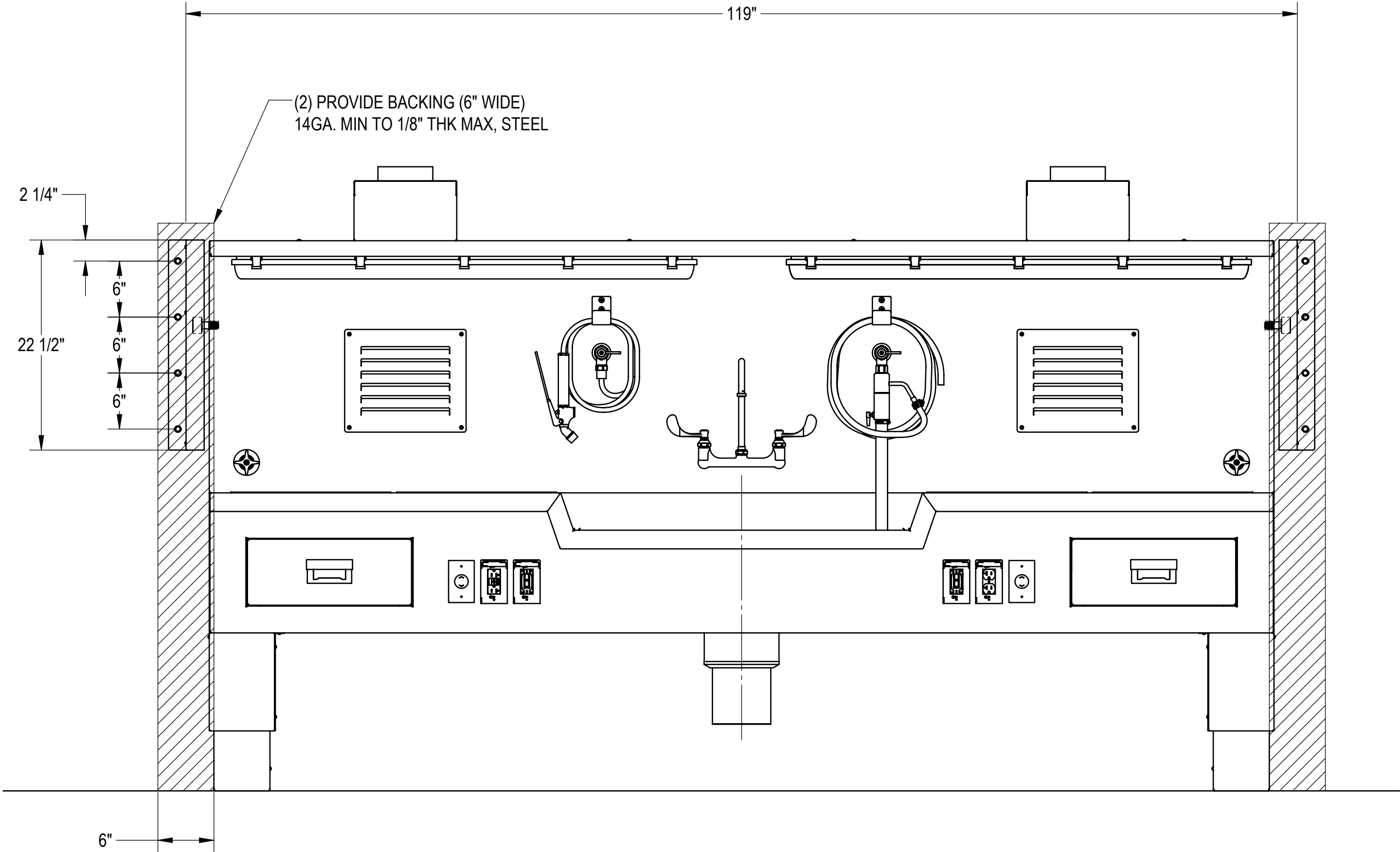
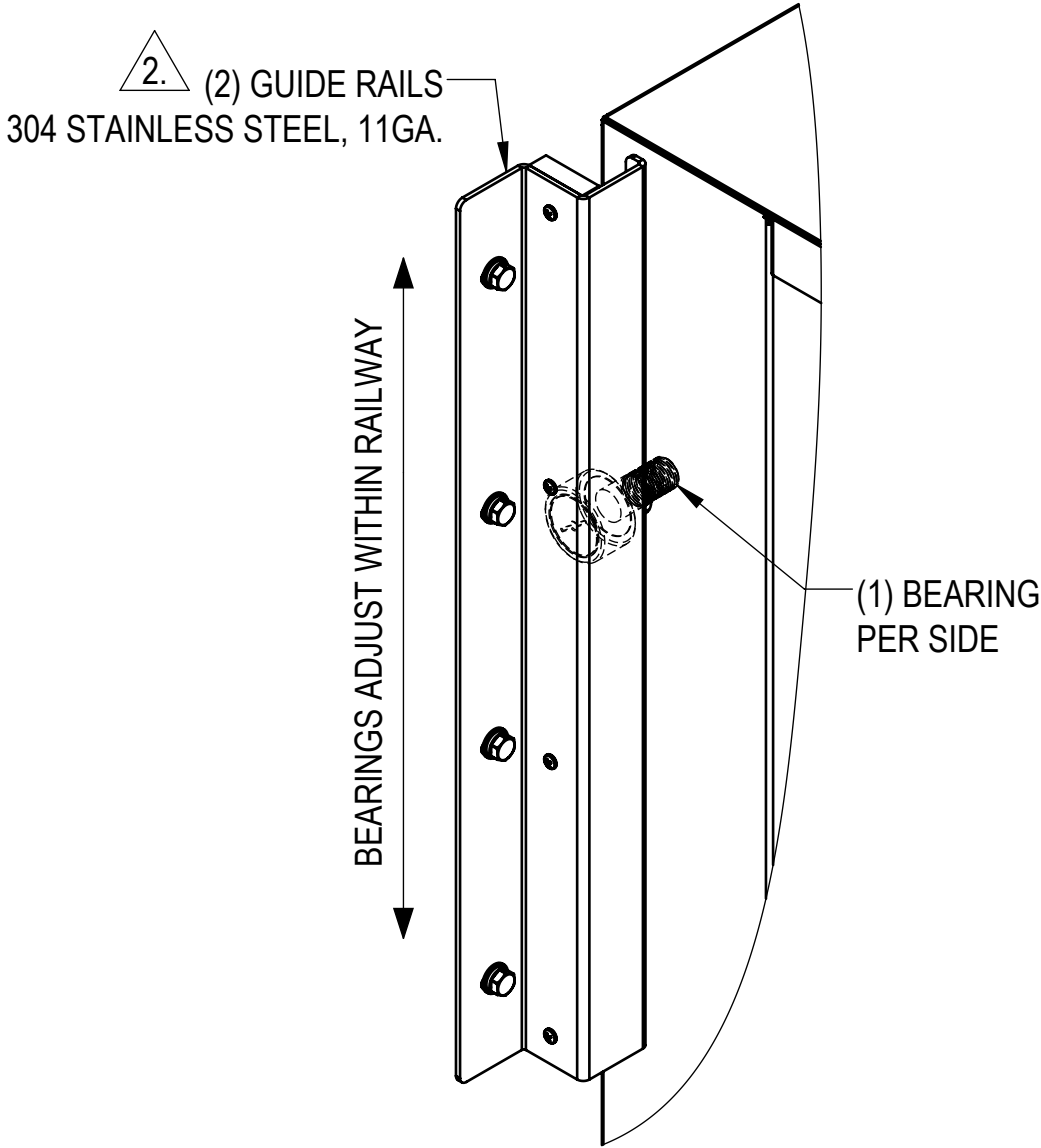
1. FLUSH LINES CLEAR BEFORE CONNECTING TO STATION.
2. PLUMBER TO PROVIDE SHUT OFF VALVES FOR WATER CONNECTIONS AND P-TRAP FOR DRAIN.
3. PROVIDE 60-65 PSI WATER PRESSURE AND 4 GALLONS PER MINUTE OF FLOW FOR PROPER OPERATION OF HYDRO ASPIRATOR.
4. ELECTRICIAN TO PROVIDE LIQUID TIGHT JUNCTION BOX AND CONDUIT CONNECTIONS PER LOCAL CODES.
5. RECOMMENDED EXHAUST: 300-350 CFM PER EXHAUST VENT WITH APPROXIMATE PRESSURE DROP OF 0.25 W.G.



CUSTOMER	APPROVAL		PROPRIETARY			<div>MOPEC GROUP</div> <div>ISO 9001:2015 CERTIFIED COMPANY</div> <div>411 North Aerojet Avenue Azusa, CA 91702 tel: (800) 410-0100 (626) 334-1471 fax: (626) 334-1704 www.moritechmfg.com</div>					
PROJECT			THIS DOCUMENT AND THE DATE DISCLOSED HEREIN AND HEREWITH IS NOT TO BE REPRODUCED, USED, OR OTHERWISE DISCLOSED IN WHOLE OR IN PART TO ANYONE WITHOUT WRITTEN AUTHORIZATION FROM MORTECH MFG.			TITLE MODEL 1036-10A FLOOR MOUNT AUTOPSY STATION, CENTER SINK, ELEVATING, ROUGH-IN					
			DO NOT SCALE DRAWING		APPROVALS					DATE	
			MATERIAL	DRAWN BY		06/06/19		SIZE C	DWG NO. 1036-10A-AP	REV. X01	
			304 STAINLESS STEEL		LUIS F.						
			FINISH		CHECKED BY						
			#4 SATIN		APPROVED BY						
SIGNATURE		DATE				SCALE 1:10		NEXT ASSY.		SHEET 2	OF 4

NOTES: UNLESS OTHERWISE SPECIFIED

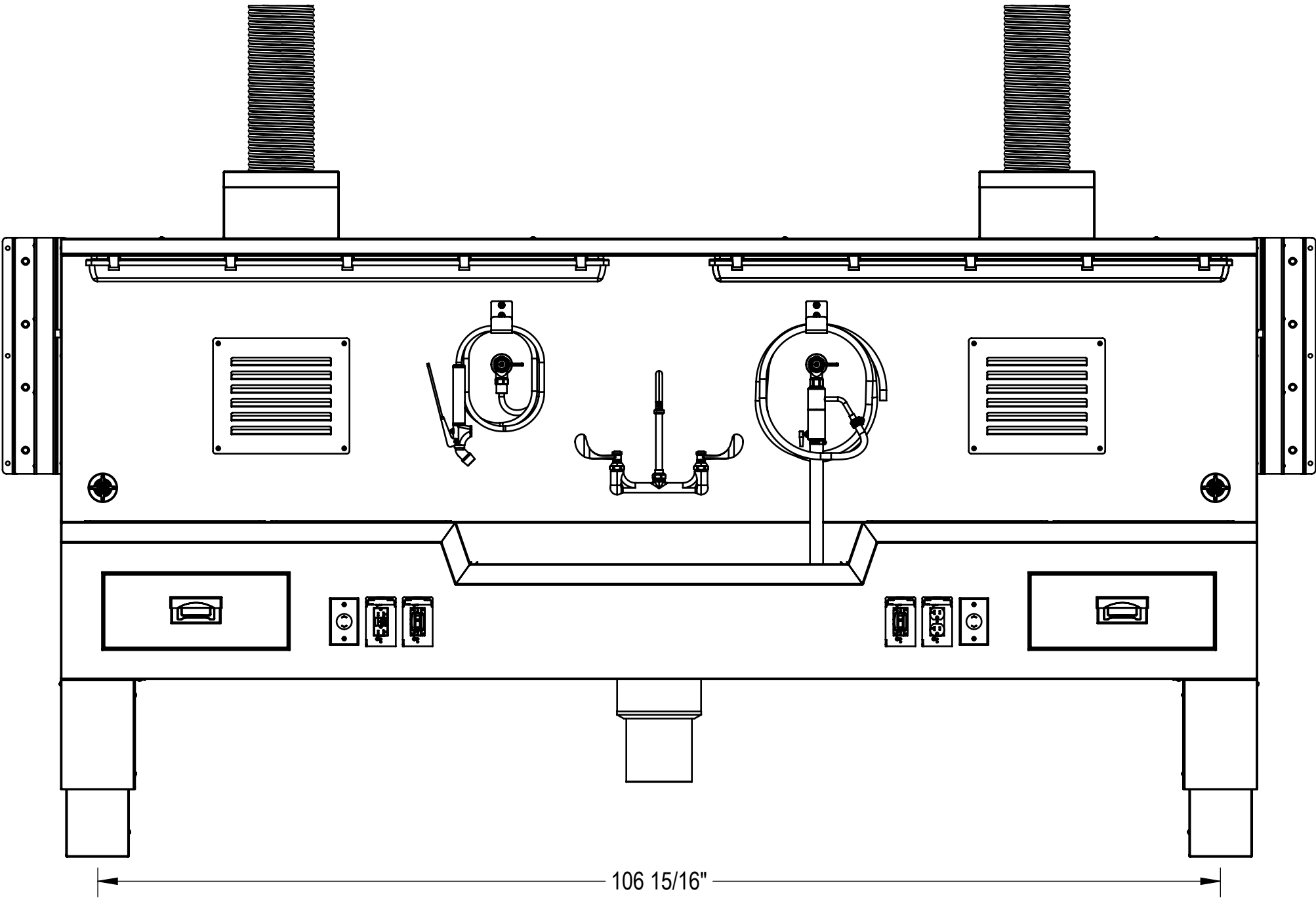
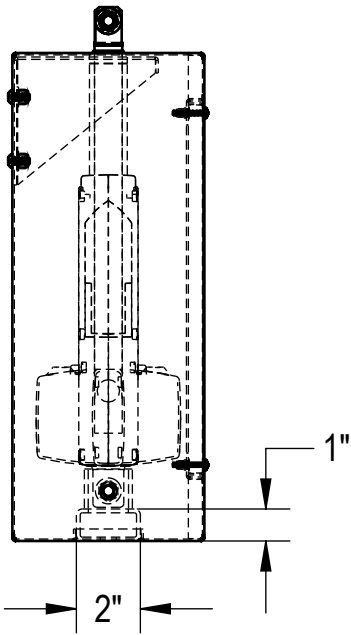
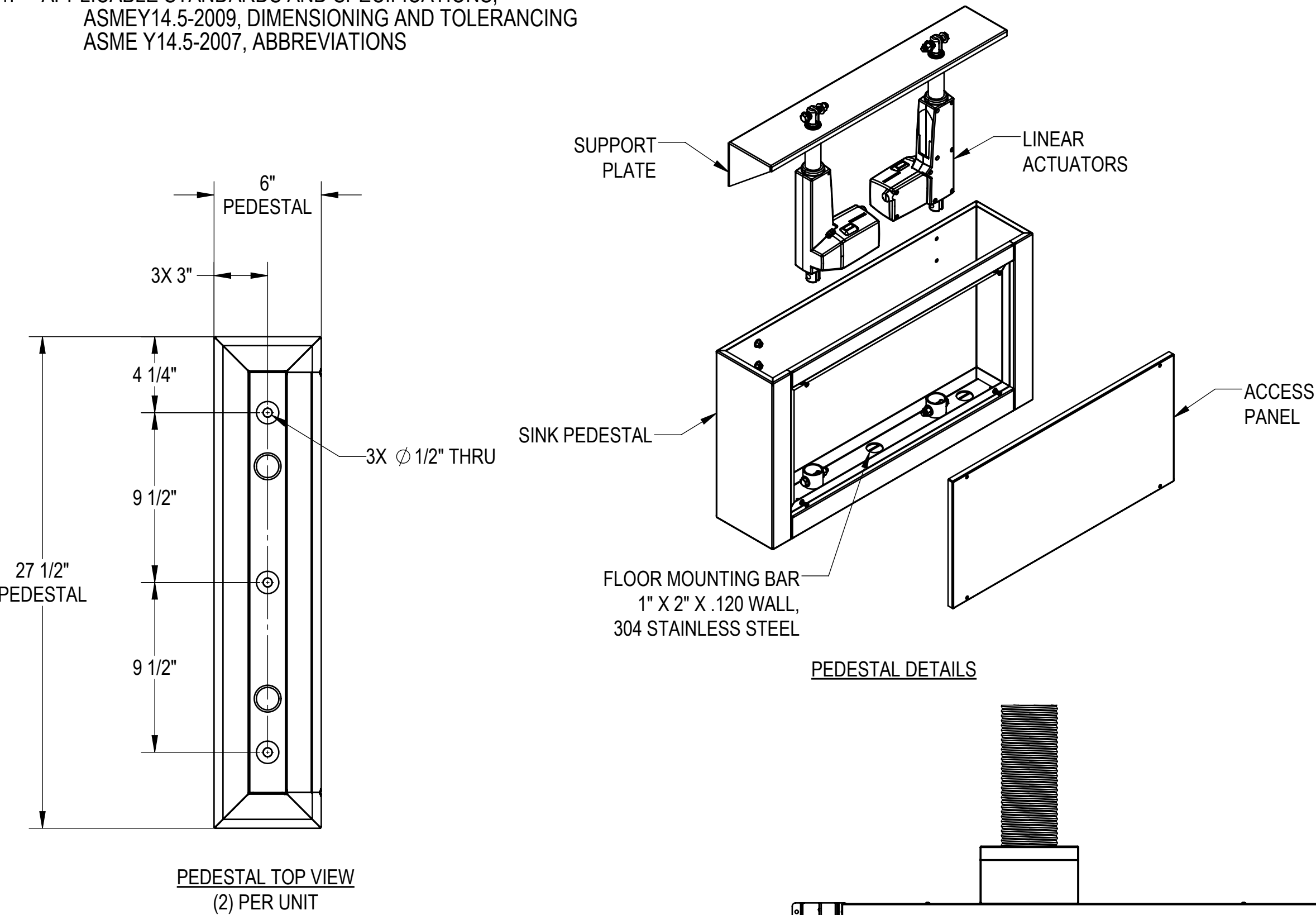
1. INSTALLATION IS BASED ON ROUGH-IN MOUNTING
DETAIL PROVIDED.
2. GUIDE RAILS PREVENT TOP OF SINK FROM
PULLING AWAY FROM WALL.



CUSTOMER	APPROVAL		PROPRIETARY THIS DOCUMENT AND THE DATE DISCLOSED HEREIN AND HERewith IS NOT TO BE REPRODUCED, USED, OR OTHERWISE DISCLOSED IN WHOLE OR IN PART TO ANYONE WITHOUT WRITTEN AUTHORIZATION FROM MORTECH MFG.			MOPEC GROUP MORTECH ISO 9001:2015 CERTIFIED COMPANY 411 North Aerojet Avenue Azusa, CA 91702 tel: (800) 410-0100 (626) 334-1471 fax: (626) 334-1704 www.mortechmfg.com		
PROJECT	SIGNATURE		DATE		DO NOT SCALE DRAWING	APPROVALS	DATE	TITLE
					MATERIAL	CHECKED BY	6/6/19	MODEL 1036-10A
					304 STAINLESS STEEL	LUIS F.		FLOOR MOUNT AUTOPSY STATION, CENTER SINK, ELEVATING, WALL RAIL
					FINISH	APPROVED BY		1036-10A-AP
				#4 SATIN			SCALE	1:10
								NEXT ASSY.
								SHEET
								3
								OF
								4
								REV.
								X01

NOTES: UNLESS OTHERWISE SPECIFIED

1. APPLICABLE STANDARDS AND SPECIFICATIONS;
ASMEY14.5-2009, DIMENSIONING AND TOLERANCING
ASME Y14.5-2007, ABBREVIATIONS



CUSTOMER	APPROVAL		<div>PROPRIETARY</div> <div>THIS DOCUMENT AND THE DATE DISCLOSED HEREIN AND HEREWITH IS NOT TO BE REPRODUCED, USED, OR OTHERWISE DISCLOSED IN WHOLE OR IN PART TO ANYONE WITHOUT WRITTEN AUTHORIZATION FROM MORTECH MFG.</div>			<div><div><div>MOPEC GROUP</div><div><div>MOPEC</div><div>MORTECH</div></div></div><div>ISO 9001:2015 CERTIFIED COMPANY</div></div> <div>411 North Aerojet Avenue Azusa, CA 91702 tel: (800) 410-0100 (626) 334-1471 fax: (626) 334-1704 www.mortechmfg.com</div>						
PROJECT						TITLE			MODEL 1036-10A			
			DO NOT SCALE DRAWING			APPROVALS			DATE			
			MATERIAL			DRAWN BY			06/06/19			
			304 STAINLESS STEEL			LUIS F.						
		SIGNATURE		DATE		FINISH			CHECKED BY			
						#4 SATIN			APPROVED BY			
							SCALE			1:10		
							NEXT ASSY.			SHEET		
										4 OF 4		
										REV. X01		
										1036-10A-AP		