

REV	DESCRIPTION	DATE	ECN #	APPR
A	INITIAL RELEASE	00-XXX-19	XXXXX	MM
B	PRODUCT IMPROVEMENT	10-JAN-25	1255	AS

Item #	Qty.	File Name	Title	Material	Rev.
1	8	PB0137.par	BOLT – ZINC, M8 x 1.25 x 14mm, HEX HEAD		A
2	8	PB0211.par	WASHER – SS, M8 x 5/16", SERRATED BELLEVILLE		A
3	3	PM0803.par	5"x1" CASTER WHEEL, WITH BRAKE. GREY LOCK		A
4	1	PM0804.par	5"x1" CASTER WHEEL, WITH BRAKE. DRIVE LOCK GREEN		A
5	1	S7261-A.asm	26" CANTILEVER STORAGE CART WELDMNT		A

**MOPEC LEGAL NOTE**

THIS DOCUMENT CONTAINS PROPRIETARY INFORMATION OF MOPEC, AND MAY NOT BE COPIED IN WHOLE OR PART, AND NO USE SHALL BE MADE OF IT OTHER THAN FOR WHICH IT HAS BEEN SUBMITTED WITHOUT THE WRITTEN PERMISSION OF A MOPEC MANAGER

MOPEC 2025

UNLESS OTHERWISE SPECIFIED:  
ALL DIMENSIONS IN INCHES

TOLERANCES

0.0	± 0.1 in
0.00	± 0.05 in
0.000	± 0.010 in
0.0000	± 0.0010 in
ANGLES	±0.5°

BREAK ALL CORNERS 0.063 X 45°  
ALL FILLET RADII R0.063 /0.125in  
INSPECT OVAL DIMENSIONS

MATERIAL

**MOPEC GROUP**

**MORTECH**  
subcontractor MANUFACTURING

DRAWN TO 3RD ANGLE PROJECTION

DRAWN BY: asalame  
DATE: 1/9/2025

CHECKED BY: ---  
DATE: 1/9/2025

APPROVED BY: MMcCLAIN  
DATE: 1/9/2025

PART NUMBER: JB026-B

DESCRIPTION: JB260 26" IR CART

SIZE: A2

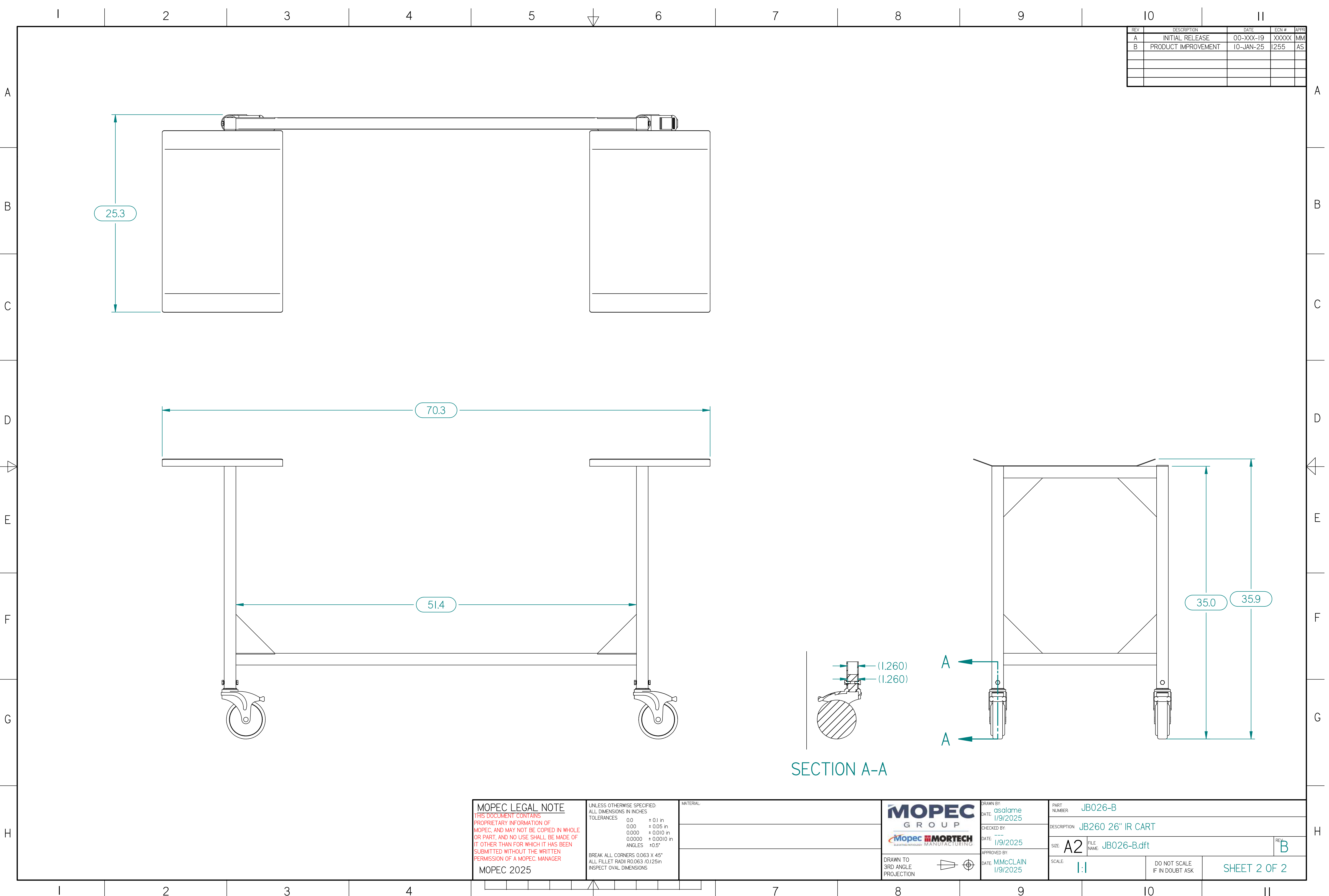
SCALE: 2:1

DO NOT SCALE IF IN DOUBT ASK

SHEET 1 OF 2

FILE NAME: JB026-B.dft

REV: B



REV	DESCRIPTION	DATE	ECN #	APPR
A	INITIAL RELEASE	00-XXX-19	XXXXX	MM
B	PRODUCT IMPROVEMENT	10-JAN-25	1255	AS

**MOPEC LEGAL NOTE**

THIS DOCUMENT CONTAINS PROPRIETARY INFORMATION OF MOPEC, AND MAY NOT BE COPIED IN WHOLE OR PART, AND NO USE SHALL BE MADE OF IT OTHER THAN FOR WHICH IT HAS BEEN SUBMITTED WITHOUT THE WRITTEN PERMISSION OF A MOPEC MANAGER

MOPEC 2025

UNLESS OTHERWISE SPECIFIED:  
ALL DIMENSIONS IN INCHES

TOLERANCES	0.0	± 0.1 in
	0.00	± 0.05 in
	0.000	± 0.010 in
	0.0000	± 0.0010 in
	ANGLES	± 0.5°

BREAK ALL CORNERS 0.063 X 45°  
ALL FILLET RADII R0.063 / 0.125 in  
INSPECT OVAL DIMENSIONS

MATERIAL

**MOPEC GROUP**

**MORTECH**  
subcontractor MANUFACTURING

DRAWN TO 3RD ANGLE PROJECTION

DRAWN BY: asalame  
DATE: 1/9/2025

CHECKED BY: ---  
DATE: 1/9/2025

APPROVED BY: MMcCLAIN  
DATE: 1/9/2025

PART NUMBER: JB026-B

DESCRIPTION: JB260 26" IR CART

SIZE: A2

SCALE: 1:1

DO NOT SCALE IF IN DOUBT ASK

SHEET 2 OF 2

FILE NAME: JB026-B.dft

REV: B

\* JB026-B.dft\*