

REV	DESCRIPTION	DATE	ECN #	APPR
A	INITIAL RELEASE	00-XXX-19	XXXXX	MM
B	UPDATED/RESTRCTURED ASSY	26-JUN-14	738	JB
C	PRODUCT IMPROVEMENT	10-JAN-25	1255	AS

Item #	Qty.	File Name	Title	Material	Rev.
1	8	PB0137.par	BOLT - ZINC, M8 x 1.25 x 14mm, HEX HEAD		A
2	8	PB0211.par	WASHER - SS, M8 x 5/16", SERRATED BELLEVILLE		A
3	3	PM0803.par	5"x1" CASTER WHEEL, WITH BRAKE. GREY LOCK		A
4	1	PM0804.par	5"x1" CASTER WHEEL, WITH BRAKE. DRIVE LOCK GREEN		A
5	1	S5863-Aasm	27" CANTILEVER STORAGE CART WELDMNT		A

MOPEC LEGAL NOTE

THIS DOCUMENT CONTAINS PROPRIETARY INFORMATION OF MOPEC, AND MAY NOT BE COPIED IN WHOLE OR PART, AND NO USE SHALL BE MADE OF IT OTHER THAN FOR WHICH IT HAS BEEN SUBMITTED WITHOUT THE WRITTEN PERMISSION OF A MOPEC MANAGER

MOPEC 2025

UNLESS OTHERWISE SPECIFIED:
ALL DIMENSIONS IN INCHES

TOLERANCES

0.0	± 0.1 in
0.00	± 0.05 in
0.000	± 0.010 in
0.0000	± 0.0010 in
ANGLES	±0.5°

BREAK ALL CORNERS 0.063 X 45°
ALL FILLET RADII R0.063 /0.125in
INSPECT OVAL DIMENSIONS

MATERIAL

MOPEC GROUP

MORTECH

subcontractor MANUFACTURING

DRAWN TO 3RD ANGLE PROJECTION

DRAWN BY: **jjohnson**
DATE: **6/20/2025**

CHECKED BY: **---**
DATE: **6/20/2025**

APPROVED BY: **MMcCLAIN**
DATE: **6/20/2025**

PART NUMBER: **JB010-A**

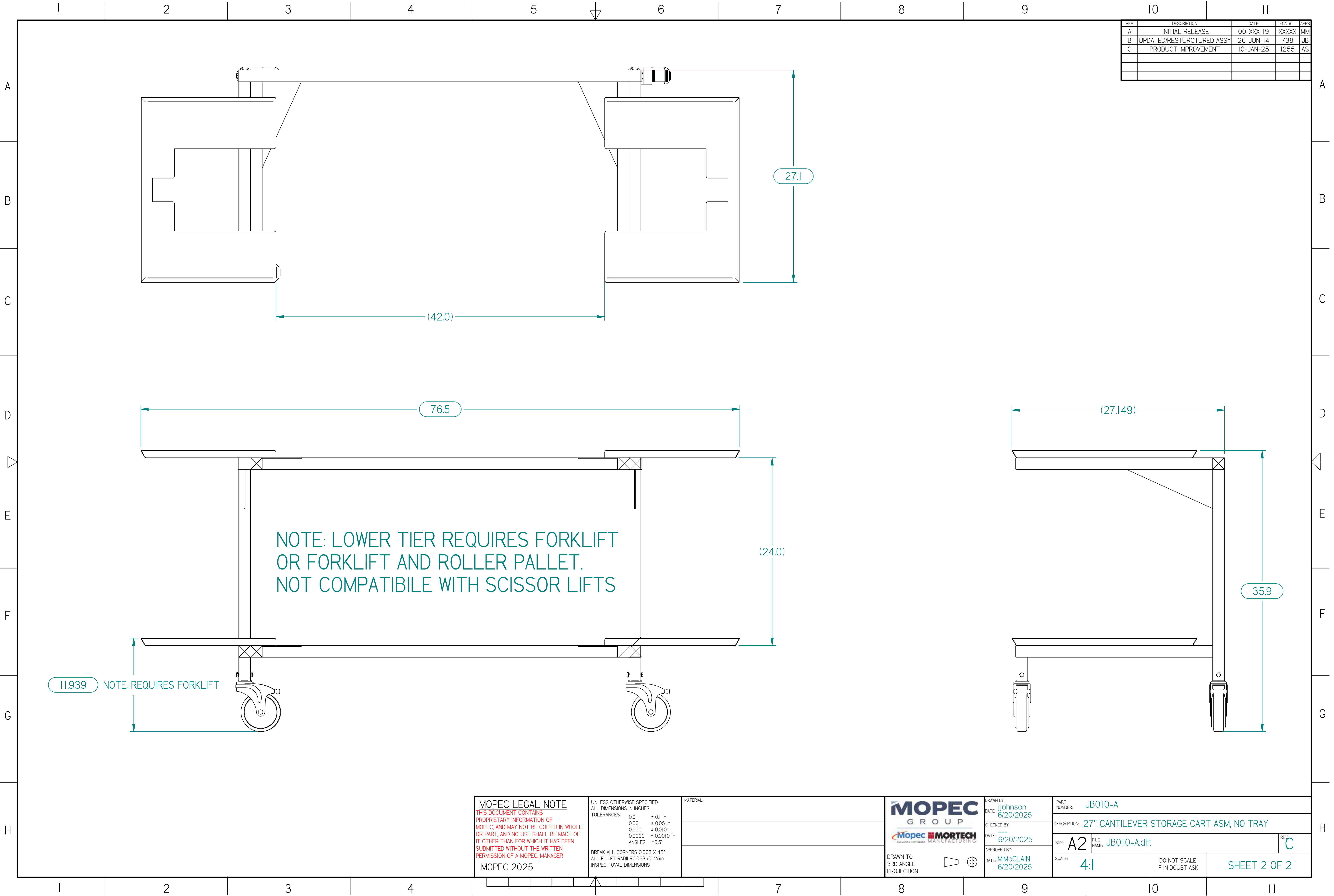
DESCRIPTION: **27" CANTILEVER STORAGE CART ASM, NO TRAY**

SIZE: **A2** FILE NAME: **JB010-A.dft** REV: **C**

SCALE: **1:1**

DO NOT SCALE IF IN DOUBT ASK

SHEET 1 OF 2



* JB010-A.dft*