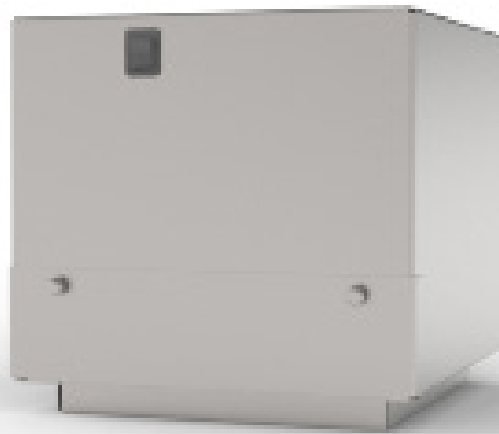


White Fume Exhaust Module With Filters

The BF710 exhaust module is a self-contained air purification chamber. Vapor-laden air is drawn through a two-stage filtration system. Airborne debris is first trapped in the pre-filter, followed by hydrocarbon absorption in a highly efficient filter cartridge containing over 210 cubic inches of activated charcoal (OR) potassium permanganate. Removal of the incoming particulate matter by the pre-filter serves to protect the filter from prematurely losing its effectiveness due to clogging. Front access panel makes the disposable filters easy to replace. The blower system filters the air and recirculates it back into the room.



BF710

SPECIFICATIONS

Construction

- Includes (1) BF710 fume extractor
- Front access panel makes disposable filters easy to replace
- Need BF724, BF736, BF748, or BF760 to mount this item on

Materials

- Powder coated steel, electric blower, (1) particulate and (1) potassium permanganate filter

Dimensions

- 12.3" L x 12.3" W x 11.2" H

Compatibility

- Fits BF724 through BF760 fume extractor modules

Options & Accessories

- BF724, BF736, BF748, BF760, fume extraction modules
- BF002 Charcoal filter for BF710
Quantity of 1 required
- BF003 Particulate filter for BF710
Quantity of 1 required
- BF005 Pot. Permanganate filter for BF710
Quantity of 1 required

Performance

- Vapor-laden air is drawn through a two-stage filtration system
- Airborne debris is first trapped in the pre-filter, followed by hydrocarbon absorption in a highly efficient filter cartridge
- Filters air and recirculates back into room

MOPEC
GROUP

mopec
ELEVATING PATHOLOGY

MORTECH
MANUFACTURING

www.mopecgroup.com

800.362.8491

800 Tech Row, Madison Heights, MI