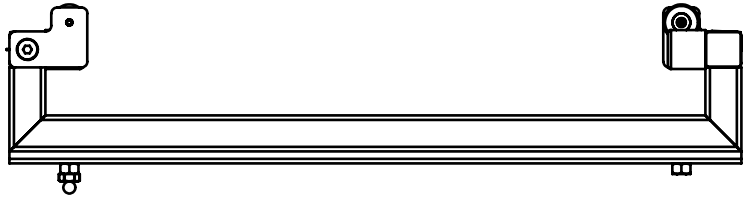
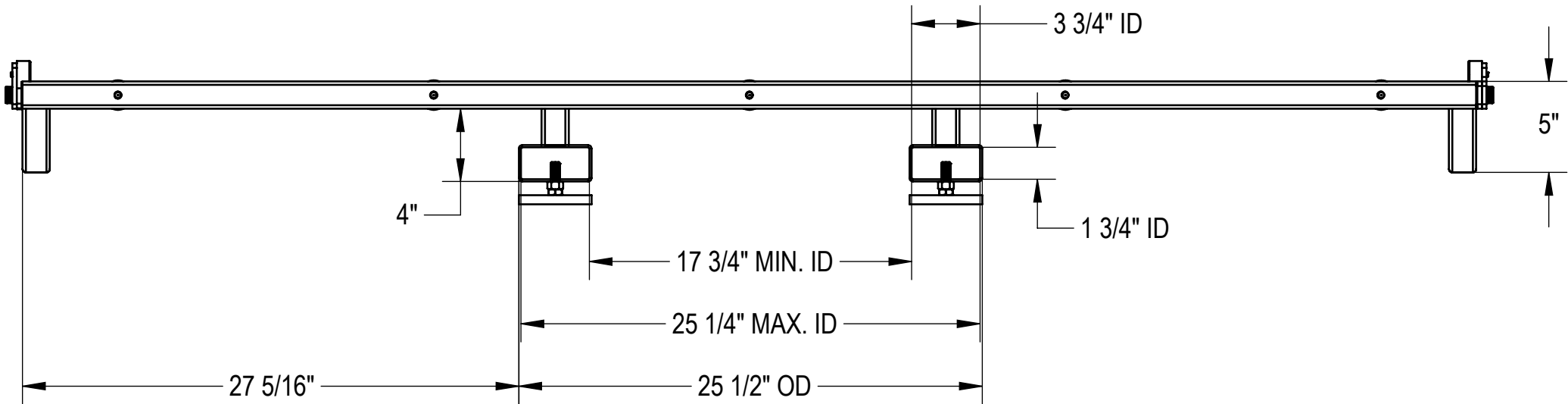
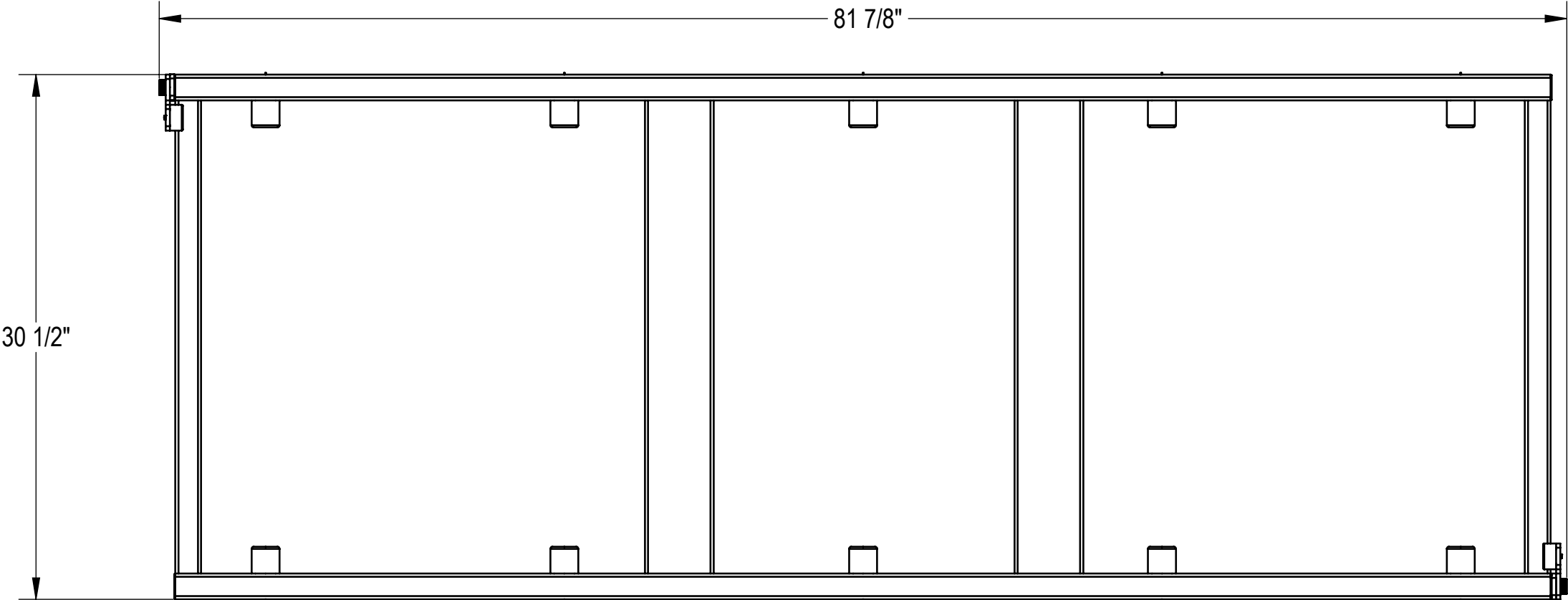
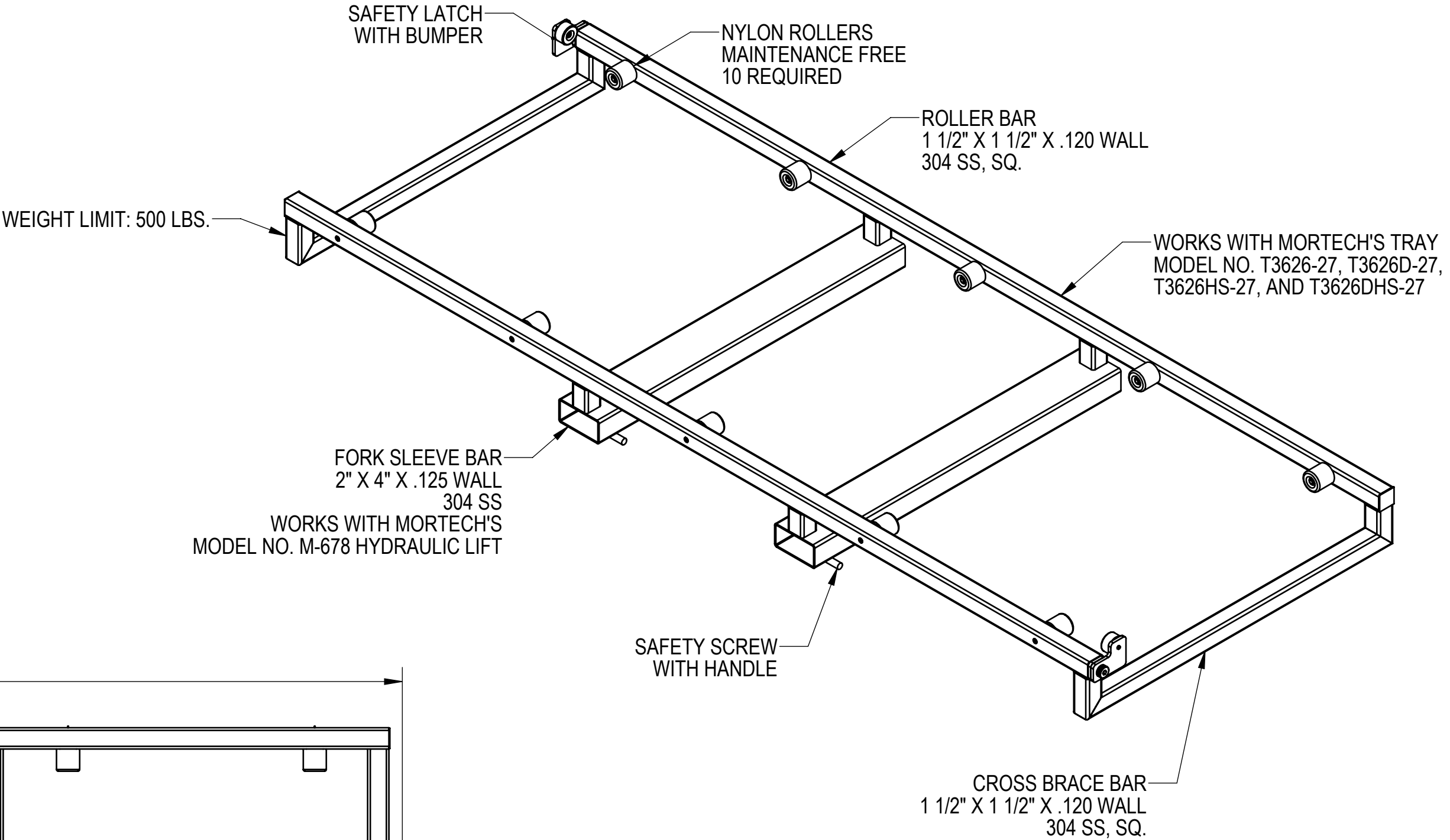


NOTES: UNLESS OTHERWISE SPECIFIED

1. APPLICABLE STANDARDS AND SPECIFICATIONS;
ASME Y14.5-2009, DIMENSIONING AND TOLERANCING
ASME Y14.5-2007, ABBREVIATIONS



CUSTOMER		APPROVAL		PROPRIETARY			MOPEC GROUP		
CUSTOMER NAME				THIS DOCUMENT AND THE DATE DISCLOSED HEREIN AND HEREWITH IS NOT TO BE REPRODUCED, USED, OR OTHERWISE DISCLOSED IN WHOLE OR IN PART TO ANYONE WITHOUT WRITTEN AUTHORIZATION FROM MORTECH MFG.			411 North Aerojet Avenue Azusa, CA 91702 tel: (800) 410-0100 (626) 334-1471 fax: (626) 334-1704 www.mortechmfg.com		
PROJECT				DO NOT SCALE DRAWING	APPROVALS	DATE	TITLE		
LINE 1				MATERIAL	DRAWN BY	6/8/2022	MODEL M600H-27		
LINE 2				304 STAINLESS STEEL	YULISSA G.		ROLLER PALLET ASSEMBLY, HYDRAULIC		
				FINISH	CHECKED BY		SIZE	DWG NO.	REV.
				GRAINED	APPROVED BY		C	M600H-27AP	X01
							SCALE	NEXT ASSY.	SHEET
							1:8		1 OF 1