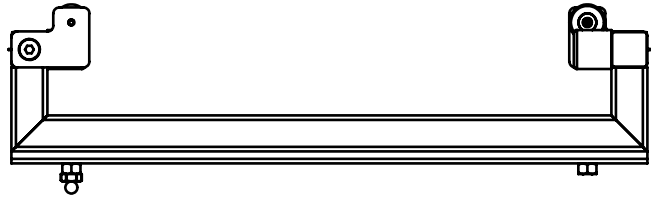
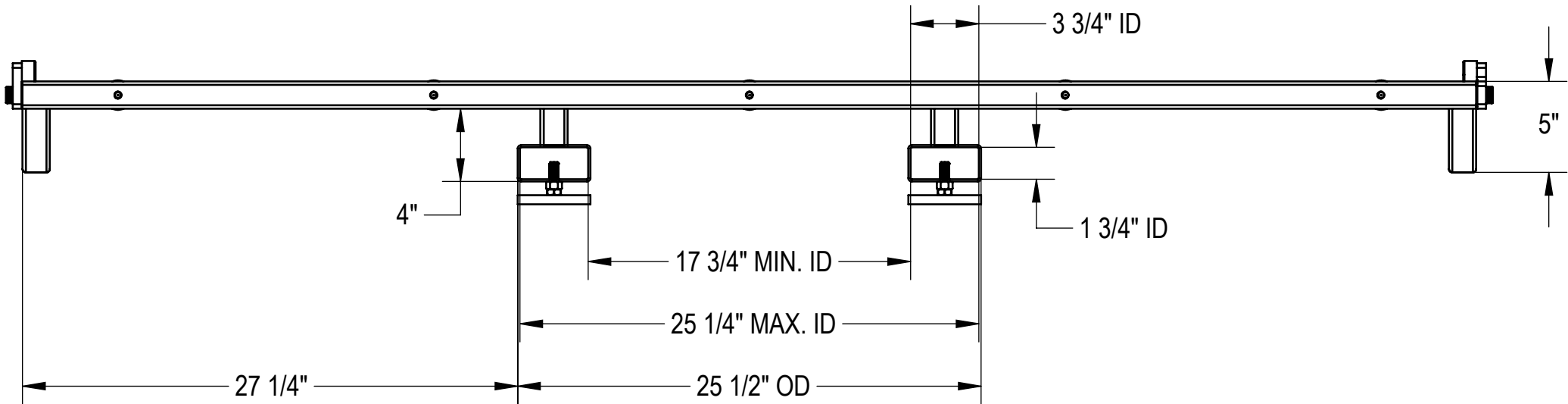
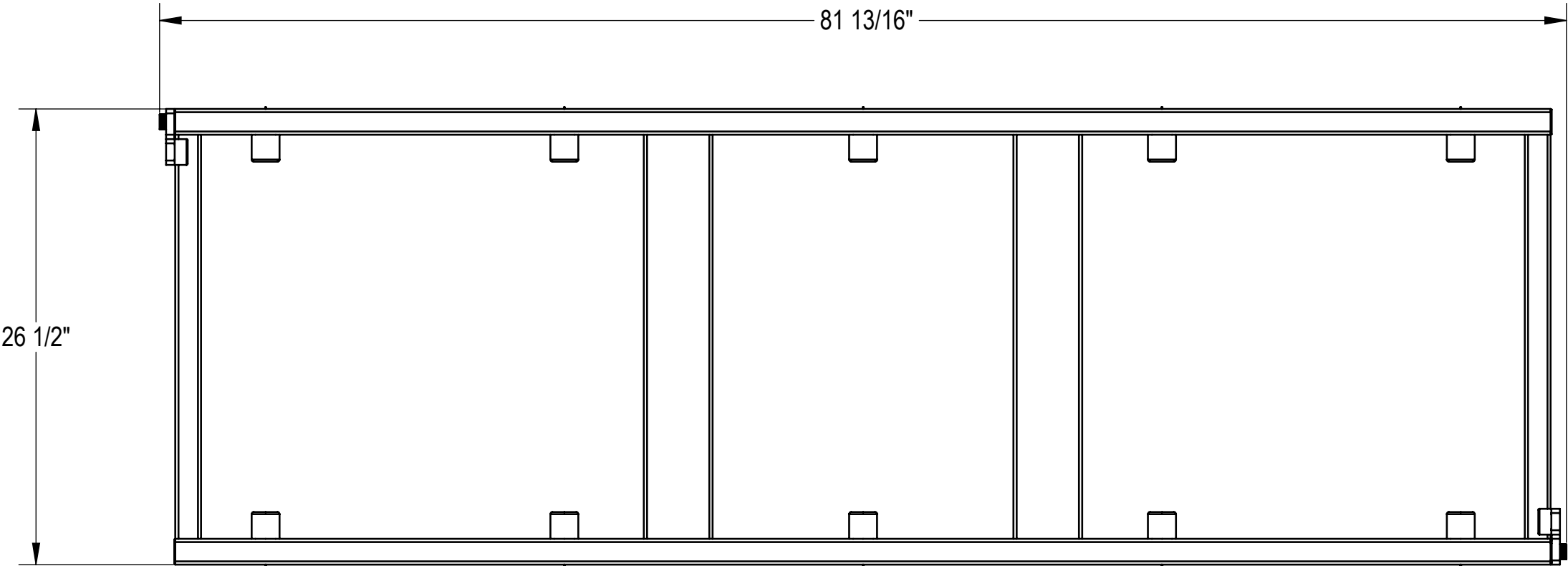
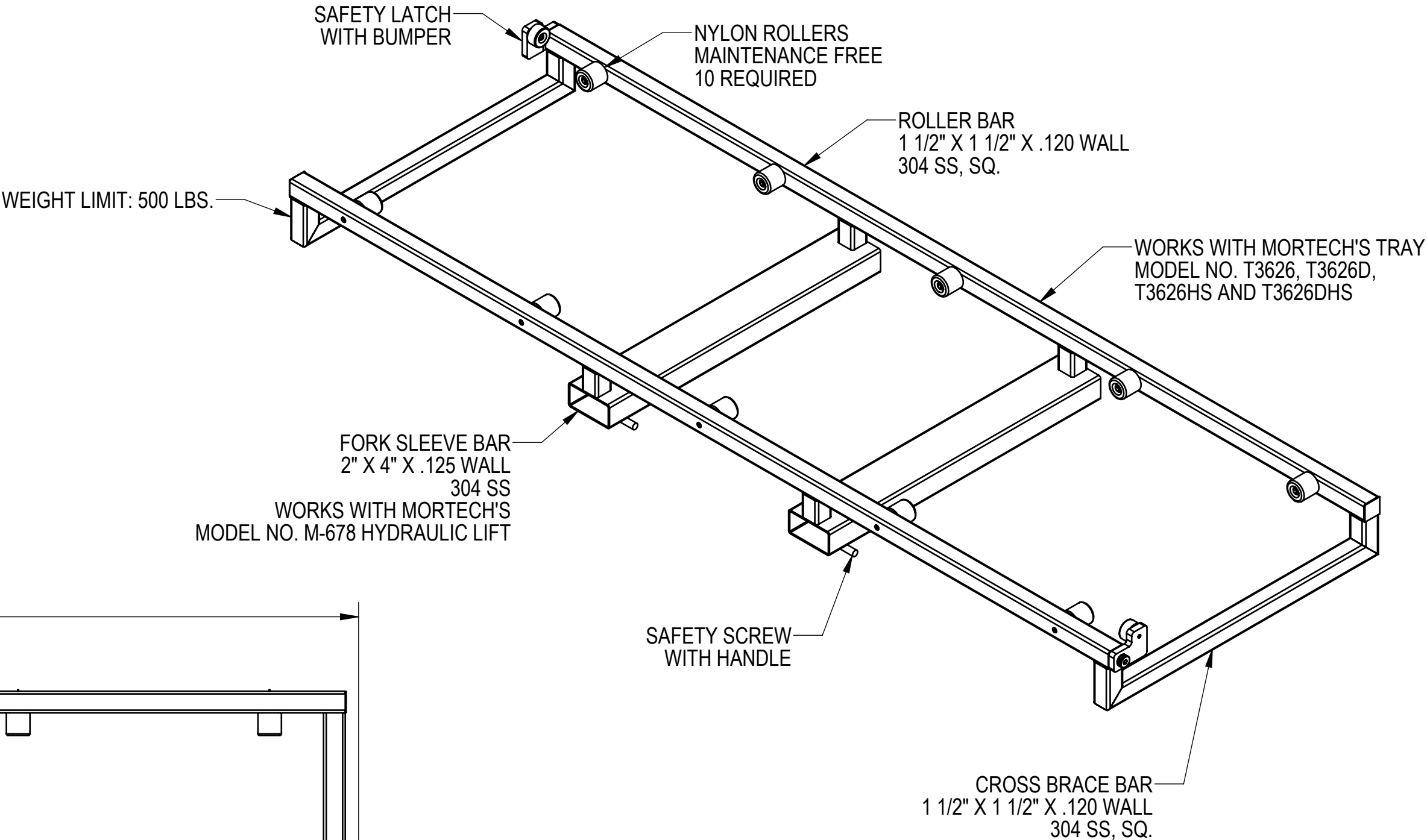


NOTES: UNLESS OTHERWISE SPECIFIED

1. APPLICABLE STANDARDS AND SPECIFICATIONS:
ASMEY14.5-2009, DIMENSIONING AND TOLERANCING
ASME Y14.5-2007, ABBREVIATIONS

REVISIONS				
REV.	DCN#	DESCRIPTION	DATE	CHANGED/APPROVED
A	-	PRODUCTION RELEASE	11/20/12	PV/RR
B	-	REVISED DRAWING SHEET AND VIEWS TO ACCOMMODATE REQUIREMENTS OF NEW PDM SYSTEM AND DRAWING STANDARDS.	01/08/18	JA/



CUSTOMER <div>CUSTOMER NAME</div>		APPROVAL		<div>PROPRIETARY</div> <div>THIS DOCUMENT AND THE DATE DISCLOSED HEREIN AND HEREWITH IS NOT TO BE REPRODUCED, USED, OR OTHERWISE DISCLOSED IN WHOLE OR IN PART TO ANYONE WITHOUT WRITTEN AUTHORIZATION FROM MORTECH MFG.</div>		<div><div><div>MOPEC GROUP</div><div>Mopec MORTTECH</div></div><div>411 North Aerojet Avenue Azusa, CA 91702 tel: (800) 410-0100 (626) 334-1471 fax: (626) 334-1704 www.mortechmfg.com</div></div>					
PROJECT <div>PROJECT NAME</div>		SIGNATURE				DATE		TITLE <div>MODEL M600H-23</div> <div>ROLLER PALLET ASSEMBLY, HYDRAULIC</div>			
				DO NOT SCALE DRAWING		APPROVALS		DATE			
				MATERIAL 304 STAINLESS STEEL		DRAWN BY PETE V.		2/28/2012			
				FINISH GRAINED		CHECKED BY RICK R		11/20/2012			
						APPROVED BY					
						SIZE C		DWG NO. M600HAP		REV. B	
						SCALE 1:8		NEXT ASSY.		SHEET 1 OF 1	