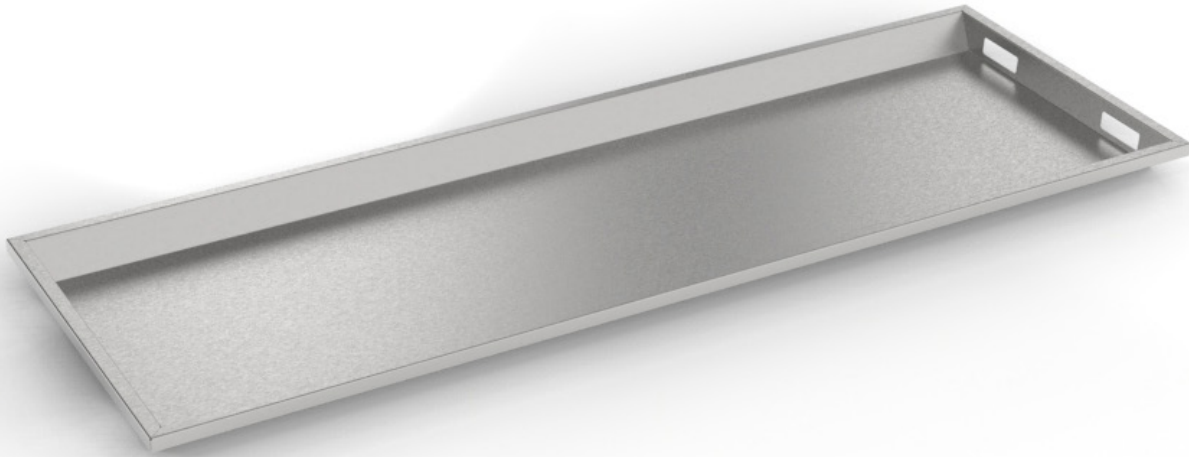


27" Body Tray with Hand Slots

Mopec's body trays are engineered from high-quality stainless steel to withstand daily use in pathology and mortuary settings. Each tray reflects Mopec's commitment to durable, professional-grade equipment that meets the demands of clinical and post-mortem environments.



JC027

SPECIFICATIONS

Construction

- Features a flat surface with sloped sides and 2 hand slots at each end
- Sloped sides to allow for easy loading and unloading

Materials

- 304 stainless steel, 18GA, sheetmetal has a polished No. 4 finish

Dimensions

- 77.5" L x 27" W x 2.75" H

Capacity

- 375 lbs

Compatibility

- Fits IA32, IB32, IJ27, IF27, IS27, and IW27 racks
- JD4000, JD5000, and M690E-27, M690ES-27, M690ESSC-27 scissor lifts with M600C-27, M600H-27, M601H-27, M601H-ES-27 roller pallets

Options & Accessories

- Other sizes available

Related Product Model Numbers

Model No.	Description	Dimensions
JC027-D	Body Tray with Hand Slots and Drain Hole	77.5" L x 27" W x 2.75" H

MOPEC
GROUP

Mopec
ELEVATING PATHOLOGY

MORTECH
MANUFACTURING

www.mopecgroup.com

800.362.8491

800 Tech Row, Madison Heights, MI