

| REV | DESCRIPTION | DATE | ECN # | APPR |
|-----|-----------------|-----------|-------|------|
| A | INITIAL RELEASE | 00-XXX-19 | XXXXX | MM |
| B | UPDATED DESIGN | XXXX | XXXX | MM |
| | | | | |
| | | | | |
| | | | | |

MOPEC LEGAL NOTE

THIS DOCUMENT CONTAINS PROPRIETARY INFORMATION OF MOPEC, AND MAY NOT BE COPIED IN WHOLE OR PART, AND NO USE SHALL BE MADE OF IT OTHER THAN FOR WHICH IT HAS BEEN SUBMITTED WITHOUT THE WRITTEN PERMISSION OF A MOPEC MANAGER

MOPEC 2025

UNLESS OTHERWISE SPECIFIED:
ALL DIMENSIONS IN INCHES

| | | |
|------------|--------|-------------|
| TOLERANCES | 0.0 | ± 0.1 in |
| | 0.00 | ± 0.05 in |
| | 0.000 | ± 0.010 in |
| | 0.0000 | ± 0.0010 in |
| ANGLES | | ±0.5° |

BREAK ALL CORNERS 0.063 X 45°
ALL FILLET RADII R0.063 /0.125in
INSPECT OVAL DIMENSIONS

MATERIAL

subcontractor **MORTECH**
MANUFACTURING

DRAWN TO
3RD ANGLE
PROJECTION

DRAWN BY:
jjohnson
DATE: 4/15/2025

CHECKED BY:
DATE: 4/15/2025

APPROVED BY:
DATE: M.McCLAIN
4/15/2025

PART
NUMBER: JC027-B

DESCRIPTION: BODY TRAY, 27X77, HAND SLOTS

SIZE: **A2**

SCALE: **1:6**

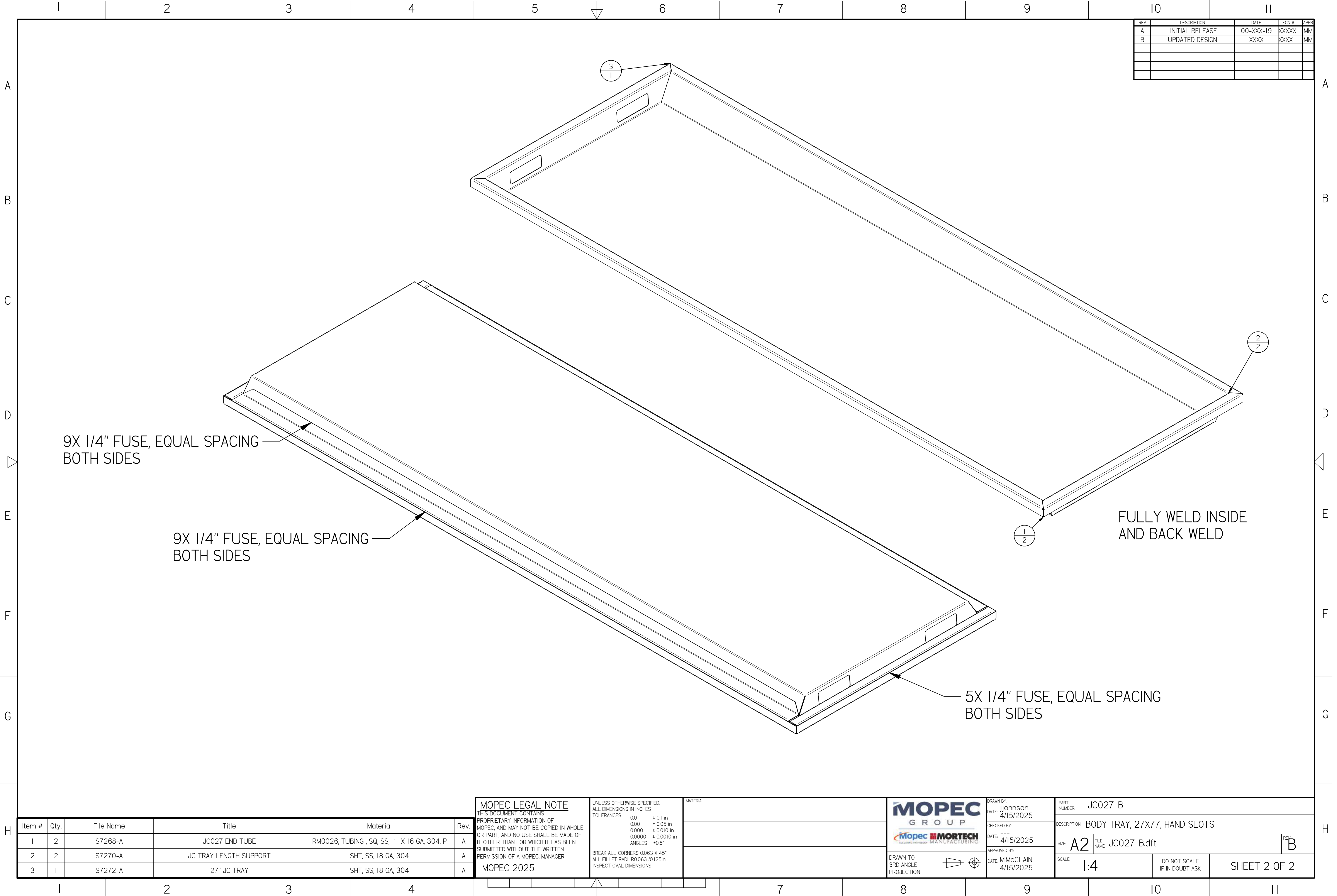
DO NOT SCALE
IF IN DOUBT ASK

SHEET 1 OF 2

FILE NAME: JC027-B.dft

REV: **B**

* JC027-B.dft*



| REV | DESCRIPTION | DATE | ECN # | APPR |
|-----|-----------------|-----------|-------|------|
| A | INITIAL RELEASE | 00-XXX-19 | XXXXX | MM |
| B | UPDATED DESIGN | XXXX | XXXX | MM |
| | | | | |
| | | | | |
| | | | | |

| Item # | Qty. | File Name | Title | Material | Rev. |
|--------|------|-----------|------------------------|---|------|
| 1 | 2 | S7268-A | JC027 END TUBE | RM0026, TUBING , SQ, SS, 1" X 16 GA, 304, P | A |
| 2 | 2 | S7270-A | JC TRAY LENGTH SUPPORT | SHT, SS, 18 GA, 304 | A |
| 3 | 1 | S7272-A | 27" JC TRAY | SHT, SS, 18 GA, 304 | A |

MOPEC LEGAL NOTE
THIS DOCUMENT CONTAINS PROPRIETARY INFORMATION OF MOPEC, AND MAY NOT BE COPIED IN WHOLE OR PART, AND NO USE SHALL BE MADE OF IT OTHER THAN FOR WHICH IT HAS BEEN SUBMITTED WITHOUT THE WRITTEN PERMISSION OF A MOPEC MANAGER

MOPEC 2025

UNLESS OTHERWISE SPECIFIED:
ALL DIMENSIONS IN INCHES

TOLERANCES

| | |
|--------|-------------|
| 0.0 | ± 0.1 in |
| 0.00 | ± 0.05 in |
| 0.000 | ± 0.010 in |
| 0.0000 | ± 0.0010 in |
| ANGLES | ±0.5° |

BREAK ALL CORNERS 0.063 X 45°
ALL FILLET RADII R0.063 /0.125in
INSPECT OVAL DIMENSIONS

MATERIAL

| |
|--|
| |
| |
| |

MOPEC GROUP
submittals, introduction, MANUFACTURING

MORTECH

DRAWN TO 3RD ANGLE PROJECTION

DRAWN BY: jjohnson
DATE: 4/15/2025

CHECKED BY: ---
DATE: 4/15/2025

APPROVED BY: M.McCLAIN
DATE: 4/15/2025

PART NUMBER: JC027-B

DESCRIPTION: BODY TRAY, 27X77, HAND SLOTS

SIZE: A2
FILE NAME: JC027-B.dft
REV: B

SCALE: 1:4

DO NOT SCALE IF IN DOUBT ASK

SHEET 2 OF 2