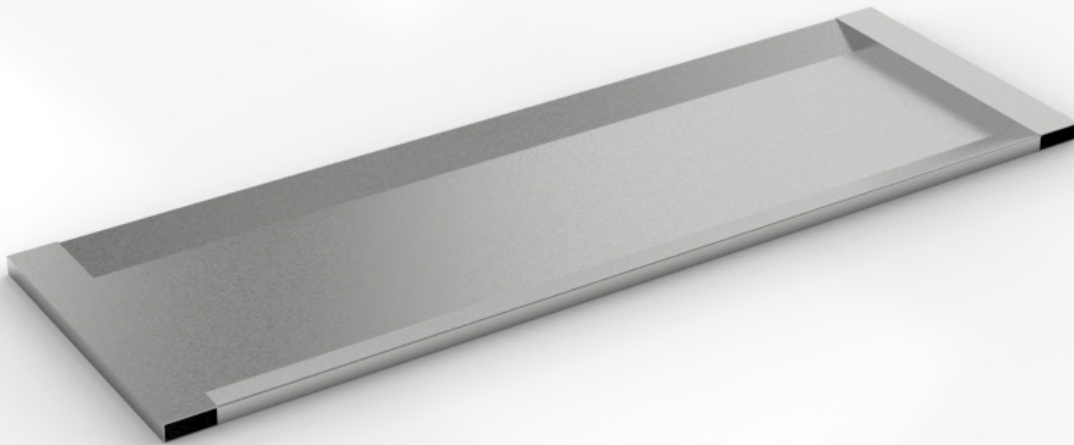


26" Body Tray

Mopec's body trays are engineered from high-quality stainless steel to withstand daily use in pathology and mortuary settings. Each tray reflects Mopec's commitment to durable, professional-grade equipment that meets the demands of clinical and post-mortem environments.



JC026

SPECIFICATIONS

Construction

- Features a flat surface with sloped sides and 1.5" x 4" tubing at each end
- Sloped sides to allow for easy loading and unloading
- To be transported by forklift or the JB026 one body cadaver carrier

Materials

- 304 stainless steel, 16GA, 1.5" x 4" 16GA tube sheetmetal, with a mill finish (not polished)

Dimensions

- 80" L x 26" W x 2.75" H

Capacity

- 375 lbs

Compatibility

- For use only with the IR series racks system
- JB026 one body cadaver carrier
- JD470 forklift

Options & Accessories

- Other sizes available

Variations

Model No.	Description	Dimensions
JC026-U	Used 26" Body Tray	80" L x 26" W x 2.75" H

MOPEC
GROUP

Mopec
ELEVATING PATHOLOGY

MORTECH
MANUFACTURING

www.mopecgroup.com

800.362.8491

800 Tech Row, Madison Heights, MI