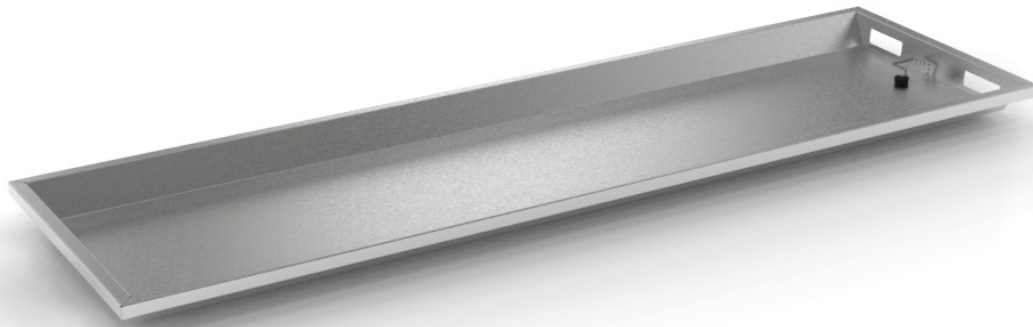


23" Body Tray with Hand Slots and Drain Hole

Mopec's body trays are engineered from high-quality stainless steel to withstand daily use in pathology and mortuary settings. Each tray reflects Mopec's commitment to durable, professional-grade equipment that meets the demands of clinical and post-mortem environments.



JC023-D

SPECIFICATIONS

Construction

- Features a flat surface with sloped sides and 2 hand slots at each end
- Sloped sides to allow for easy loading and unloading
- Creased to allow for draining to the included drain hole
- Includes drain plug and chain

Materials

- 304 stainless steel, 18GA, sheetmetal has a polished No. 4 finish

Dimensions

- 77.5" L x 23" W x 2.75" H

Capacity

- 375 lbs

Compatibility

- Fits IA32, IB32, IJ23, IF23, IS23, and IW23 racks
- JD4000, JD5000, and M690E-23, M690ES-23, M690ESSC-23 scissor lifts with M600C-23, M600H-23, M601H-23, M601H-ES-23 roller pallets

Options & Accessories

- Other sizes available

Variations

Model No.	Description	Dimensions
JC023	Body Tray with Hand Slots	77.5" L x 23" W x 2.75" H

MOPEC
GROUP

mopec
ELEVATING PATHOLOGY

MORTECH
MANUFACTURING

www.mopecgroup.com

800.362.8491

800 Tech Row, Madison Heights, MI