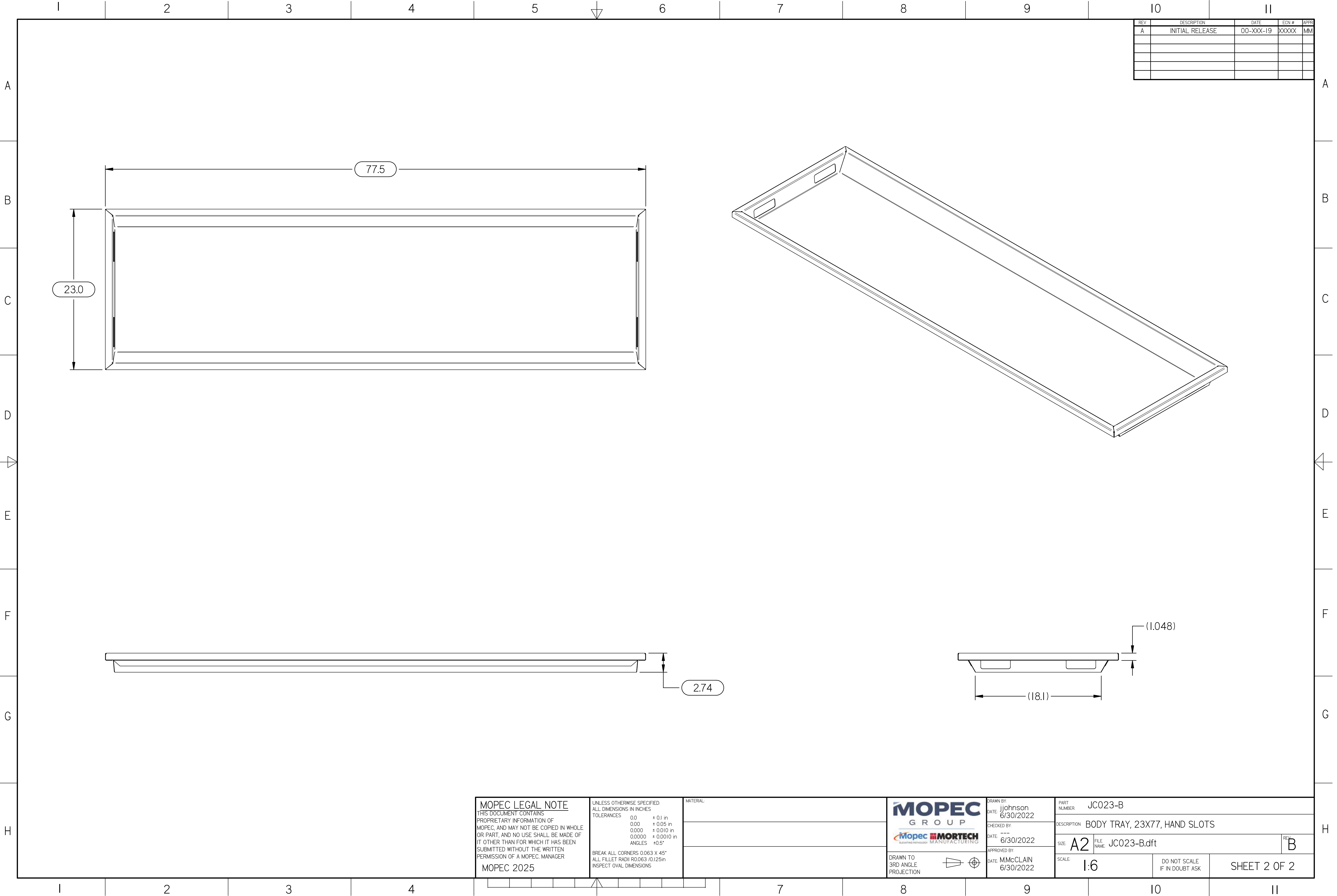


* JC023-B.dft*



REV	DESCRIPTION	DATE	ECN #	APPR
A	INITIAL RELEASE	00-XXX-19	XXXXX	MM

MOPEC LEGAL NOTE

THIS DOCUMENT CONTAINS PROPRIETARY INFORMATION OF MOPEC, AND MAY NOT BE COPIED IN WHOLE OR PART, AND NO USE SHALL BE MADE OF IT OTHER THAN FOR WHICH IT HAS BEEN SUBMITTED WITHOUT THE WRITTEN PERMISSION OF A MOPEC MANAGER

MOPEC 2025

UNLESS OTHERWISE SPECIFIED:
ALL DIMENSIONS IN INCHES

TOLERANCES	0.0	± 0.1 in
	0.00	± 0.05 in
	0.000	± 0.010 in
	0.0000	± 0.0010 in
	ANGLES	±0.5°

BREAK ALL CORNERS 0.063 X 45°
ALL FILLET RADII R0.063 /0.125in
INSPECT OVAL DIMENSIONS

MATERIAL

MOPEC GROUP

MORTECH
subcontractor MANUFACTURING

DRAWN TO 3RD ANGLE PROJECTION

DRAWN BY: jjohnson
DATE: 6/30/2022

CHECKED BY:
DATE: 6/30/2022

APPROVED BY: M.McCLAIN
DATE: 6/30/2022

PART NUMBER: JC023-B

DESCRIPTION: BODY TRAY, 23X77, HAND SLOTS

SIZE: A2

FILE NAME: JC023-B.dft

SCALE: 1:6

DO NOT SCALE IF IN DOUBT ASK

SHEET 2 OF 2

REV: B

* JC023-B.dft*