

REV	DESCRIPTION	DATE	ECN #	APPR
A	INITIAL RELEASE	00-XXX-19	XXXXX	MM
B	UPDATED ASSY	4/8/2021		JJ
C	NEW CADAVER COVER	9/25/23	1155	JJ

Item Number	Quantity	File Name	Title	Material	Revision
1	1	JZ005-Apar	CADAVER COVER WHITE 81"L X 31"W X 18"D		A
2	1	S0499-Basm	JA610 FALSE FRAME WELDMNT		B

MOPEC LEGAL NOTE

THIS DOCUMENT CONTAINS PROPRIETARY INFORMATION OF MOPEC, AND MAY NOT BE COPIED IN WHOLE OR PART, AND NO USE SHALL BE MADE OF IT OTHER THAN FOR WHICH IT HAS BEEN SUBMITTED WITHOUT THE WRITTEN PERMISSION OF A MOPEC MANAGER

MOPEC 2025

UNLESS OTHERWISE SPECIFIED:
ALL DIMENSIONS IN INCHES

TOLERANCES

0.0	± 0.1 in
0.00	± 0.05 in
0.000	± 0.010 in
0.0000	± 0.0010 in
ANGLES	± 0.5°

BREAK ALL CORNERS 0.063 X 45°
ALL FILLET RADII R0.063 /0.125in
INSPECT OVAL DIMENSIONS

MATERIAL

MOPEC GROUP

Mopec MORTECH
SOLUTIONS IN PRODUCTION MANUFACTURING

DRAWN TO 3RD ANGLE PROJECTION

DRAWN BY: ehankins
DATE: 9/25/2023

CHECKED BY: ---
DATE: 9/25/2023

APPROVED BY: MMcCLAIN
DATE: 9/25/2023

PART NUMBER: JA610-C

DESCRIPTION: ALUMINUM FALSE FRAME AND COVER -JA600

SIZE: A2

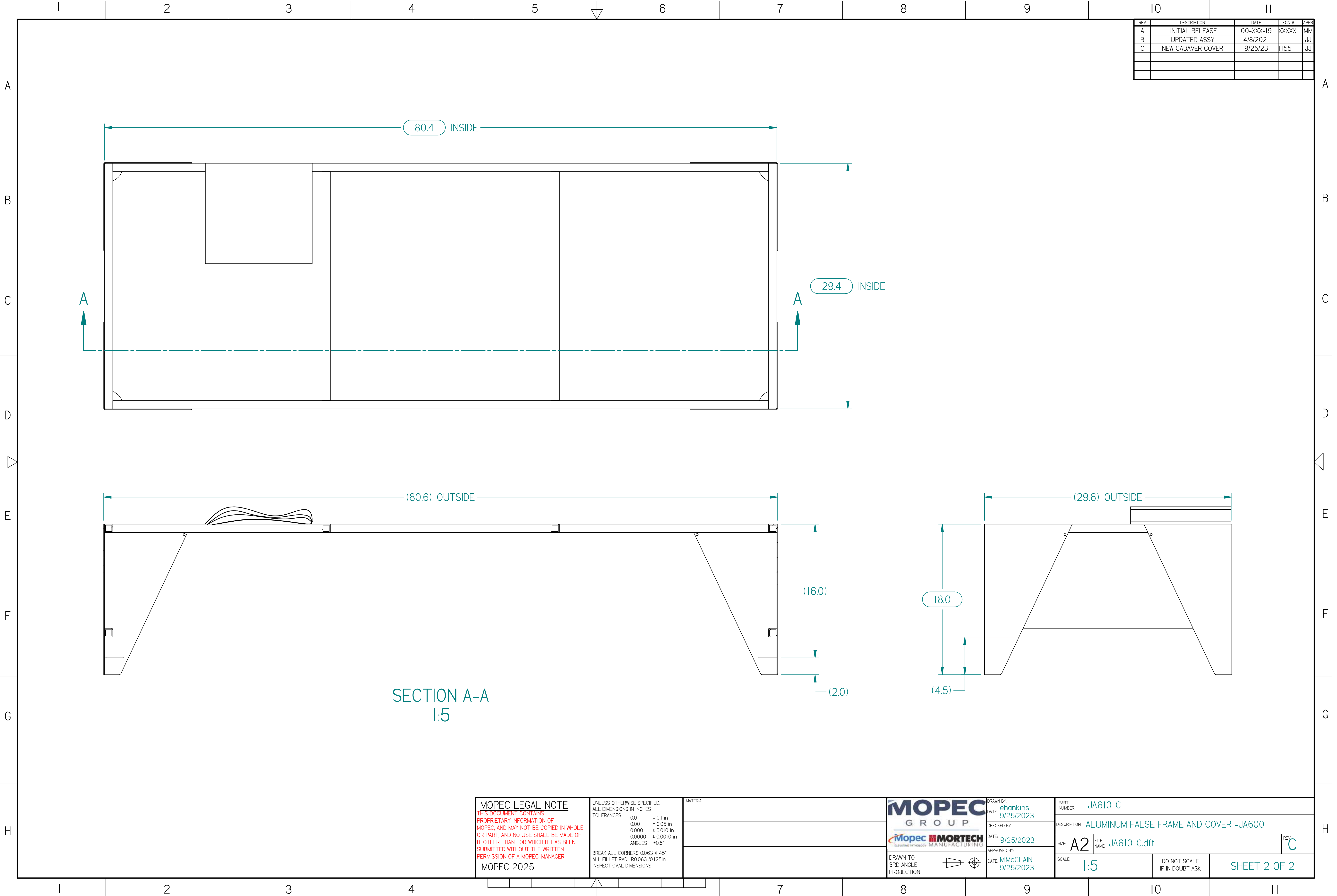
FILE NAME: JA610-C.dft

SCALE: 1:4

DO NOT SCALE IF IN DOUBT ASK

SHEET 1 OF 2

REV: C



JA610-C.dft