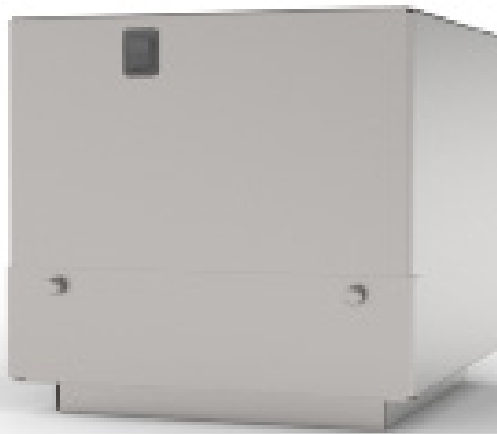


# White Fume Exhaust Module With Filters

The BF710 exhaust module is a self-contained air purification chamber. Vapor-laden air is drawn through a two-stage filtration system. Airborne debris is first trapped in the pre-filter, followed by hydrocarbon absorption in a highly efficient filter cartridge containing over 210 cubic inches of activated charcoal (OR) potassium permanganate. Removal of the incoming particulate matter by the pre-filter serves to protect the filter from prematurely losing its effectiveness due to clogging. Front access panel makes the disposable filters easy to replace. The blower system filters the air and recirculates it back into the room.



BF710

## SPECIFICATIONS

### Construction

- Includes (1) BF710 fume extractor
- Front access panel makes disposable filters easy to replace
- Need BF724, BF736, BF748, or BF760 to mount this item on

### Materials

- Powder coated steel, electric blower, (1) particulate and (1) potassium permanganate filter

### Dimensions

- 12.3" L x 12.3" W x 11.2" H

### Compatibility

- Fits BF724 through BF760 fume extractor modules

### Options & Accessories

- BF724, BF736, BF748, BF760, fume extraction modules
- BF002 Charcoal filter for BF710 Qty. of 1 Req'd
- BF003 Particulate filter for BF710 Qty. of 1 Req'd
- BF005 Pot. Permanganate filter for BF710 of 1 Req'd

### Performance

- Vapor-laden air is drawn through a two-stage filtration system
- Airborne debris is first trapped in the pre filter, followed by hydrocarbon absorption in a highly efficient filter cartridge
- Filters air and recirculates back into room

**MOPEC**  
GROUP

**mopec**  
ELEVATING PATHOLOGY

**MORTECH**  
MANUFACTURING

[www.mopecgroup.com](http://www.mopecgroup.com)

800.362.8491

800 Tech Row, Madison Heights, MI