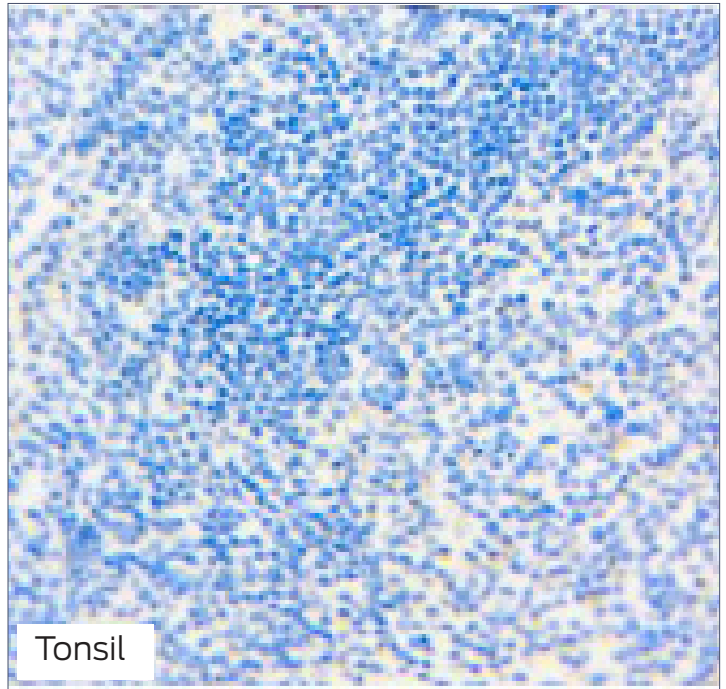
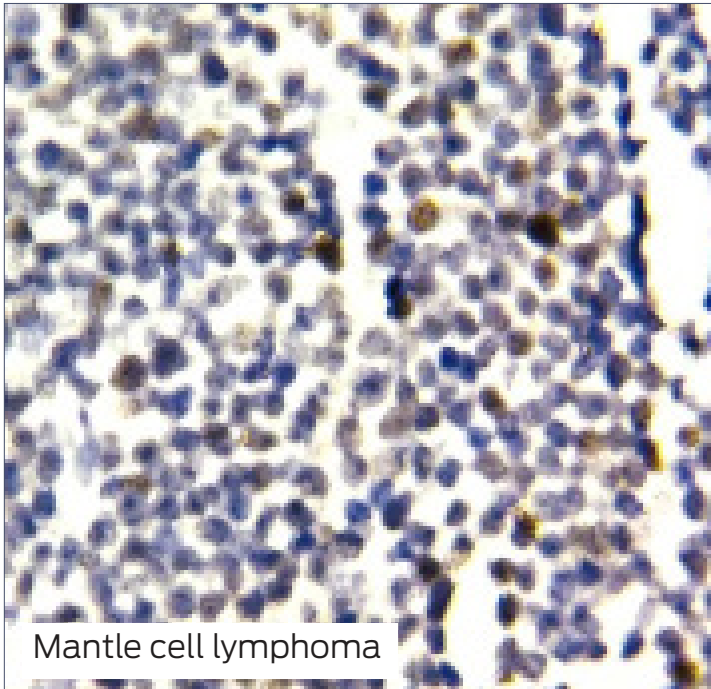


SOX11

Positive tissue controls should only be utilized for monitoring the correct performance of processed tissues and test reagents, rather than as an aid in the interpretation of samples. If the positive tissue controls fail to demonstrate positive staining, results with the test specimens should be considered invalid.



SPECIFICATIONS

Tissue

- (+) Mantle Cell Lymphoma
- (-) Tonsil (Tissue Type Varies)

Fixative

- 10% Neutral buffered formalin

Embedding

- Paraffin

Thickness

- 4 µm

Mounting

- Mounted on positively charged slides made of pure white glass; air dried

Storage Conditions

- RT, light-deprived, humidity-controlled

Notes

- Deparaffinize and rehydrate before use
- Custom modifications available, including tissue placement, drying method, section thickness, and/or slide glass

Variations

Model No.	Description	Contains
SC625-25	Control Slides, IHC, SOX11 Box of 25	24 unstained, +1 stained
SC625-100	Control Slides, IHC, SOX11, Box of 100	98 unstained, +2 stained

MOPEC
GROUP

Mopec
ELEVATING PATHOLOGY

MORTECH
MANUFACTURING

www.mopecgroup.com

800.362.8491

800 Tech Row, Madison Heights, MI