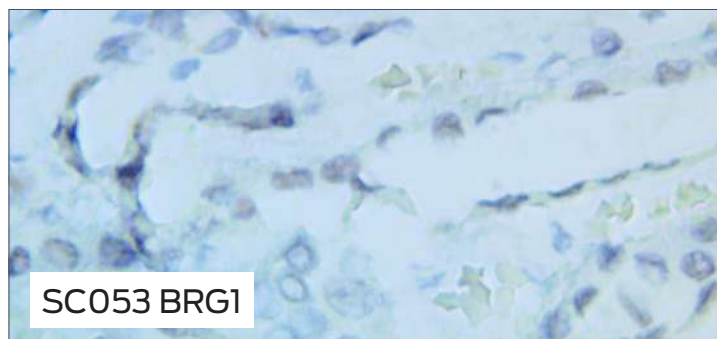
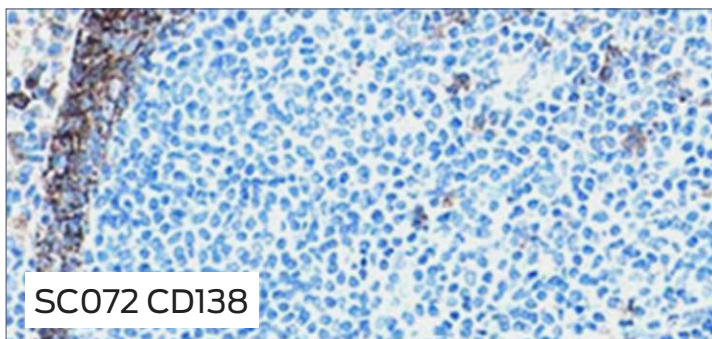


Immunohistochemical (IHC)

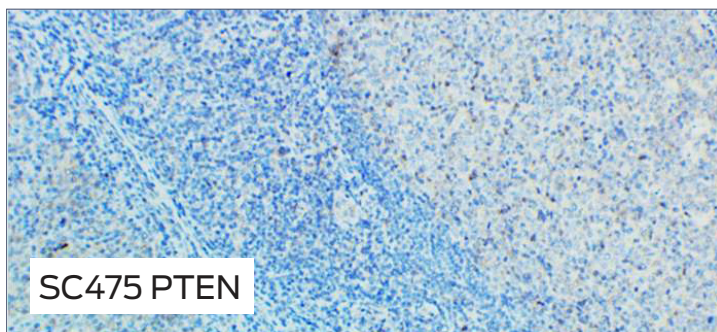
IHC control slides play a crucial role in assessing the accuracy of the staining protocol, detecting any background staining, and determining sensitivity and specificity. These slides are an indispensable quality control tool, helping researchers to verify that the staining protocol is functioning correctly, and the observed staining is specific to the target protein of interest. The use of IHC control slides allows researchers to interpret their results with confidence, avoiding any false-positive or false-negative outcomes.



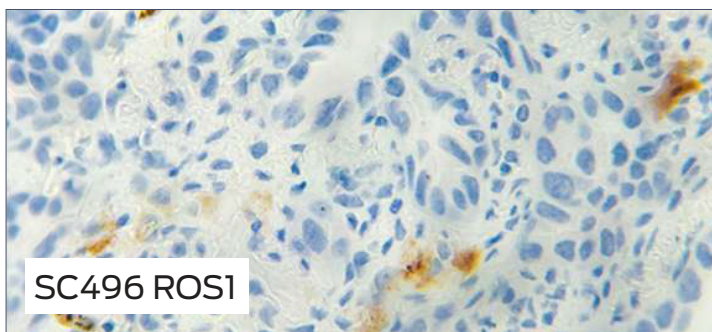
SC053 BRG1



SC072 CD138



SC475 PTEN



SC496 ROS1

SPECIFICATIONS

Construction

- All controls are cut in serial sections at 4 microns.
- Standard tissues placement is mid-high on slide to facilitate placement of patient and control tissue on the same slide.
- All slides are air dried.

Materials

- Each slide is made using Formalin Fixed Paraffin Embedded (FFPE) human tissue mounted on Mopec's IHC Enhanced Hydrophilic Adhesive Slides.

Performance

- Product specific reactivity is guaranteed for one year from date of receipt when stored properly at 60-80°F in a humidity controlled and light-deprived environment.
- Revalidate after one year to verify continued reactivity.

Capacity

- Box of 25: contains 24 unstained and 1 stained slide.
- Box of 100 contains: 98 unstained slides and 2 stained slides.

Options & Accessories

- Custom Modifications Available.
- This includes changes to the tissue placement, drying method, section thickness and/or slide glass.

Notes

- The intended use of these control slides is to qualitatively assess the performance of the immunohistochemical stain.
- These controls are not quality controlled for IHC methods, we do not certify antigenicity.

MOPEC
GROUP

mopec
ELEVATING PATHOLOGY

MORTECH
MANUFACTURING

www.mopecgroup.com

800.362.8491

800 Tech Row, Madison Heights, MI