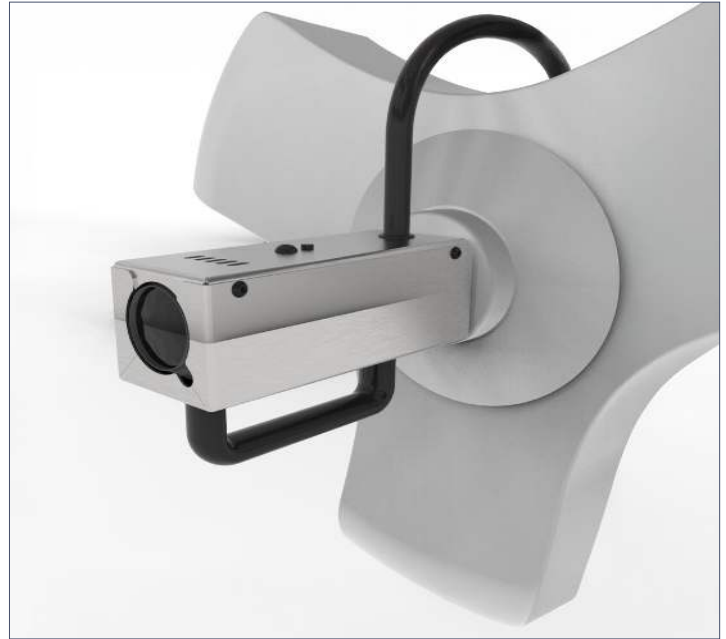


PathCam HD Camera for BB Series Surgical Lights

The BB105 HD Light-Mounted Camera features the integrated PathCam HD, a high-definition, light-mounted camera designed for live demonstrations, teaching, and streaming. It is compatible with all Limitless Rotation Surgical Light Mounts (BB138, BB139, BB140, BB141), offering a seamless solution for surgical visualization and documentation.



SPECIFICATIONS

Construction

- Surgical Light-Mounted Camera: PathCam HD
- Best for live Demonstrations and teaching/streaming applications
- Preprogrammed with PathCam Software settings

Compatibility

- Compatible with all Limitless Rotation Surgical Light Mounts (BB138, BB139, BB140, BB141)

Materials

- BB105: 2.7" L x 4.4" W x 7"
- PathCam HD Camera
- HDMI-USB Hub Converter
- HDMI Cable
- 60-Day PathCam Software Free Trial
- 1-year Limited Manufacturer's Warranty

Dimensions

- BB105: 2.7" L x 4.4" W x 7" H

Performance

- Image Sensor: 2.1 MP CMOS
- LWiVe Video Feed: 1920 x 1080 pixels
- Optical/Digital Magnification
- Auto Focus, Auto White Balance and Auto Exposure
- Multi-monitor switching system compatible
- Max FOV: 11.3 ft x 8 ft (3.4 m x 2.4 m) @ 9 ft (2.7 m)
- Min FOV: 7.5 in x 5.3 in (19.1 cm x 13.5 cm) @ 6 in (15.2 cm)

MOPEC
GROUP

mopec **MORTECH**
ELEVATING PATHOLOGY MANUFACTURING

www.mopecgroup.com

800.362.8491

800 Tech Row, Madison Heights, MI