

REV	DESCRIPTION	DATE	ECN #	APPR
A	INITIAL RELEASE	00-XXX-19	XXXXX	MM

Item Number	Quantity	File Name	Title	Material
1	1	PTE-0001-26D.asm	PTA-45 ARM	
2	1	S7972.asm	PIVOT ADAPTER / CABLE PASS THROUGH	
3	1	AX250HR-001.asm	CAMERA / ENCLOSURE	
4	1	91280A351_Medium-Strength Class 8.8 Steel Hex Head Screw.par		
5	1	6092K21_Nylon Seven Arm Knob.par		
6	4	90910A768.par	SS Button Head Torx Screws, 8-32 x 3/8"	
7	1	PM0766.par	ERGOTRON 42" WALL TRACK	
8	2	S6836-B.par	AX ACCESSORY MOUNT	RM0258, FLAT, AL, 1/2" X 2-1/2", 6061
9	1	PM0354-B.asm	ERGOTRON, KEYBOARD ARM	
10	1	PM0355-B.asm	ERGOTRON, MONITOR ARM	
11	4	PL0091.par	5/16"-18 x 1-1/2" L. KNOB	Stainless steel
12	1	PM0875.par	ERGOTRON 10" WALL TRACK	
13	1	PM0864.par	ERGOTRON, WALL TRACK MOUNT BRACKET KIT FOR CPU HOLDER	
14	1	PM0874.asm	ERGOTRON, CPU HOLDER	

THIS DOCUMENT CONTAINS PROPRIETARY INFORMATION OF MOPEC, AND MAY NOT BE COPIED IN WHOLE OR PART, AND NO USE SHALL BE MADE OF IT OTHER THAN FOR WHICH IT HAS BEEN SUBMITTED WITHOUT THE WRITTEN PERMISSION OF A MOPEC MANAGER

MOPEC 2021

UNLESS OTHERWISE SPECIFIED:
ALL DIMENSIONS IN INCHES
TOLERANCES 0.0 ± 0.1 in
0.00 ± 0.05 in
0.000 ± 0.010 in
0.0000 ± 0.0010 in
ANGLES ±0.5°
BREAK ALL CORNERS 0.063 X 45°
ALL FILLET RADI R0.063 (0.125in)
INSPECT OVAL DIMENSIONS

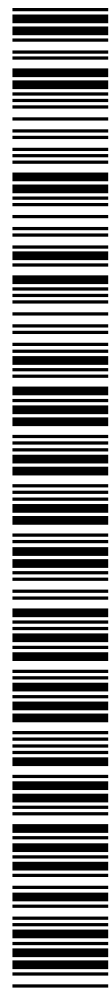
MATERIAL

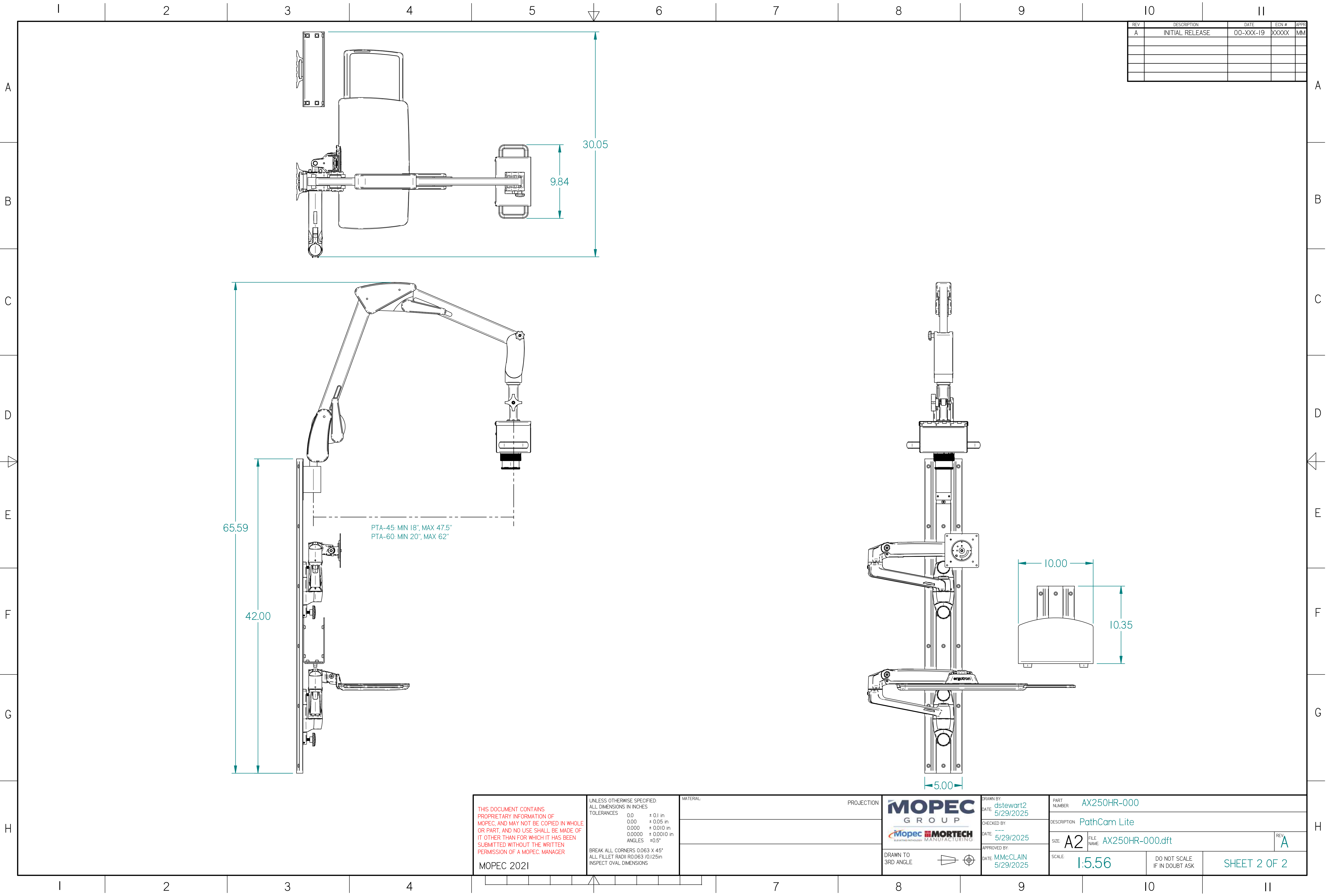
MOPEC GROUP
Advanced Technology Manufacturing

Mopec MORTECH
Advanced Technology Manufacturing

DRAWN BY: dstewart2
DATE: 5/29/2025
CHECKED BY:
DATE: 5/29/2025
APPROVED BY: MMcCLAIN
DATE: 5/29/2025

PART NUMBER: AX250HR-000
DESCRIPTION: PathCam Lite
SIZE: A2
SCALE: 1:4
DO NOT SCALE IF IN DOUBT ASK
SHEET 1 OF 2





REV	DESCRIPTION	DATE	ECN #	APPR
A	INITIAL RELEASE	00-XXX-19	XXXXX	MM

THIS DOCUMENT CONTAINS
PROPRIETARY INFORMATION OF
MOPEC, AND MAY NOT BE COPIED IN WHOLE
OR PART, AND NO USE SHALL BE MADE OF
IT OTHER THAN FOR WHICH IT HAS BEEN
SUBMITTED WITHOUT THE WRITTEN
PERMISSION OF A MOPEC MANAGER

MOPEC 2021

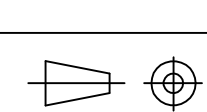
UNLESS OTHERWISE SPECIFIED:
ALL DIMENSIONS IN INCHES
TOLERANCES 0.0 ± 0.1 in
0.00 ± 0.05 in
0.000 ± 0.010 in
0.0000 ± 0.0010 in
ANGLES ± 0.5°
BREAK ALL CORNERS 0.063 X 45°
ALL FILLET RADI R0.063 /0.125in
INSPECT OVAL DIMENSIONS

MATERIAL

PROJECTION



DRAWN TO
3RD ANGLE



DRAWN BY:
DATE: dstewart2
5/29/2025
CHECKED BY:
DATE: ---
5/29/2025
APPROVED BY:
DATE: MMcLAIN
5/29/2025

PART
NUMBER AX250HR-000

DESCRIPTION PathCam Lite

SIZE A2 FILE NAME AX250HR-000.dft

SCALE 1:5.56

DO NOT SCALE
IF IN DOUBT ASK

SHEET 2 OF 2

REV A

