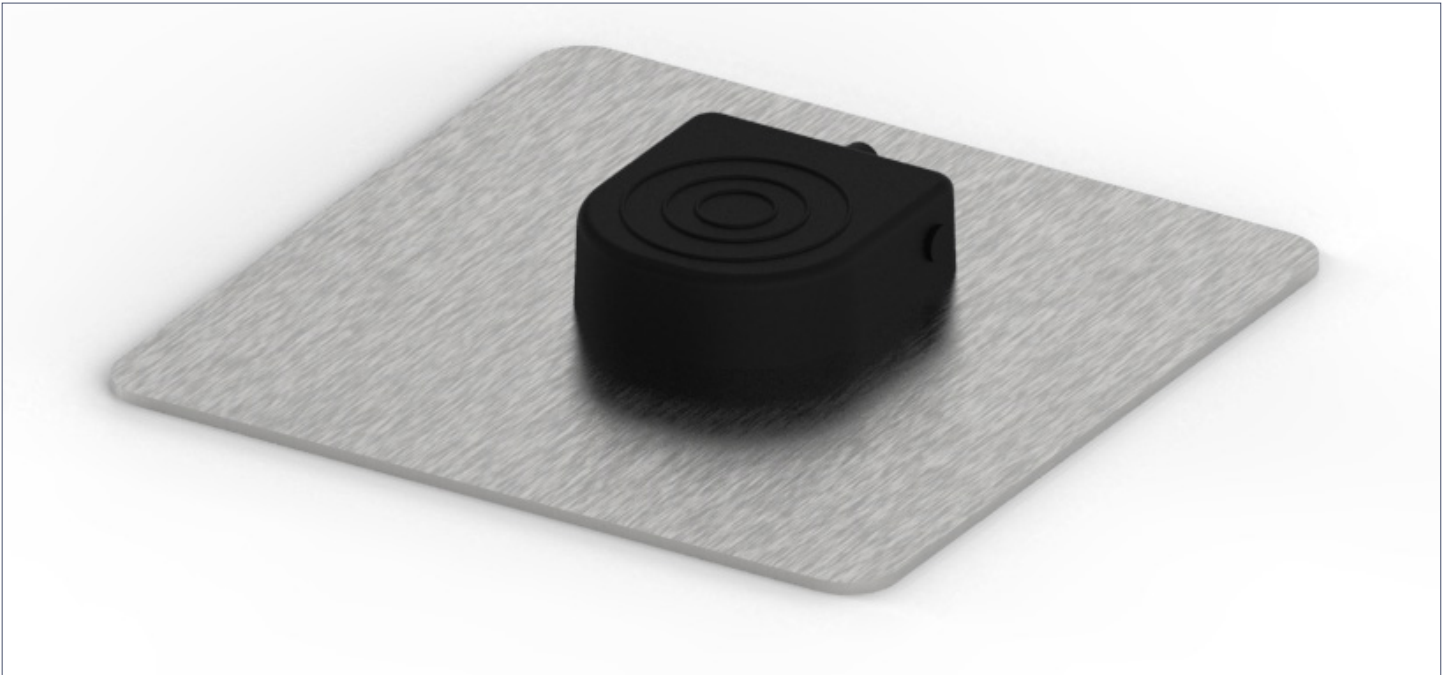


# Maestro Pneumatic Faucet Foot Pedal



## SPECIFICATIONS

### Construction

- Designed to control the On/Off function for the sink on a Maestro or Maestro Encore grossing station
- Includes pneumatic foot pedal, hose, water solenoid, and coil

### Performance

- Controls the On/Off function of the unit's sink
- Use pedal to turn on faucet, and press again to turn faucet off, unless water timer is set for automatic shut off

### Compatibility

- Compatible with all Maestro and Maestro Encore grossing stations

**MOPEC**  
GROUP

**Mopec**  
ELEVATING PATHOLOGY

**MORTECH**  
MANUFACTURING

[www.mopecgroup.com](http://www.mopecgroup.com)

800.362.8491

800 Tech Row, Madison Heights, MI