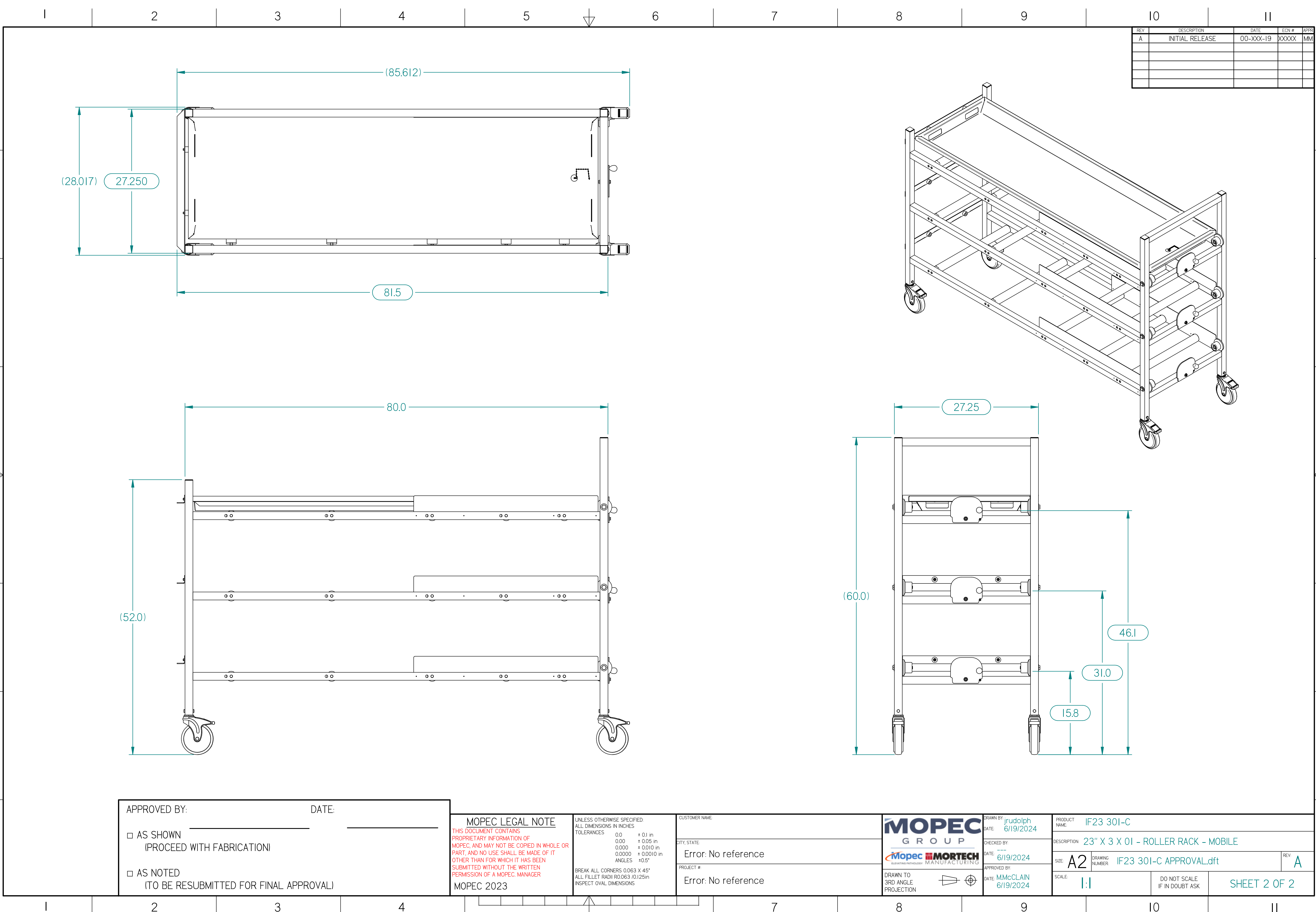




A  
B  
C  
D  
E  
F  
G  
H



REV	DESCRIPTION	DATE	ECN #	APPR
A	INITIAL RELEASE	00-XXX-19	XXXXX	MM

APPROVED BY: \_\_\_\_\_ DATE: \_\_\_\_\_

☐ AS SHOWN (PROCEED WITH FABRICATION)

☐ AS NOTED (TO BE RESUBMITTED FOR FINAL APPROVAL)

**MOPEC LEGAL NOTE**  
THIS DOCUMENT CONTAINS PROPRIETARY INFORMATION OF MOPEC, AND MAY NOT BE COPIED IN WHOLE OR PART, AND NO USE SHALL BE MADE OF IT OTHER THAN FOR WHICH IT HAS BEEN SUBMITTED WITHOUT THE WRITTEN PERMISSION OF A MOPEC MANAGER  
MOPEC 2023

UNLESS OTHERWISE SPECIFIED:  
ALL DIMENSIONS IN INCHES  
TOLERANCES  
0.0 ± 0.1 in  
0.00 ± 0.05 in  
0.000 ± 0.010 in  
0.0000 ± 0.0010 in  
ANGLES ± 0.5°  
BREAK ALL CORNERS 0.063 X 45°  
ALL FILLET RADII R0.063 /0.125in  
INSPECT OVAL DIMENSIONS

CUSTOMER NAME

CITY, STATE

PROJECT #

Error: No reference

Error: No reference

**MOPEC GROUP**  
**Mopec MORTECH**  
ADVANCED TECHNOLOGY MANUFACTURING

DRAWN TO 3RD ANGLE PROJECTION

DRAWN BY: jrudolph DATE: 6/19/2024

CHECKED BY: DATE: 6/19/2024

APPROVED BY: MMcCLAIN DATE: 6/19/2024

PRODUCT NAME: IF23 301-C

DESCRIPTION: 23" X 3 X 01 - ROLLER RACK - MOBILE

SIZE: A2

DRAWING NUMBER: IF23 301-C APPROVAL.dft

SCALE: 1:1

DO NOT SCALE IF IN DOUBT ASK

REV: A

SHEET 2 OF 2

\*IF23 301-C APPROVAL.dft\*