

REV	DESCRIPTION	DATE	ECN #	APPR
A	INITIAL RELEASE	00-XXX-19	XXXXX	MM

**MOPEC LEGAL NOTE**

THIS DOCUMENT CONTAINS PROPRIETARY INFORMATION OF MOPEC, AND MAY NOT BE COPIED IN WHOLE OR PART, AND NO USE SHALL BE MADE OF IT OTHER THAN FOR WHICH IT HAS BEEN SUBMITTED WITHOUT THE WRITTEN PERMISSION OF A MOPEC MANAGER

MOPEC 2025

UNLESS OTHERWISE SPECIFIED:  
ALL DIMENSIONS IN INCHES

TOLERANCES	0.0	± 0.1 in
	0.00	± 0.05 in
	0.000	± 0.010 in
	0.0000	± 0.0010 in
ANGLES		±0.5°

BREAK ALL CORNERS 0.063 X 45°  
ALL FILLET RADII R0.063 /0.125in  
INSPECT OVAL DIMENSIONS

MATERIAL


ILLUSTRATED BY MORTALITY

DRAWN BY: jbourbeau  
DATE: 4/15/2025

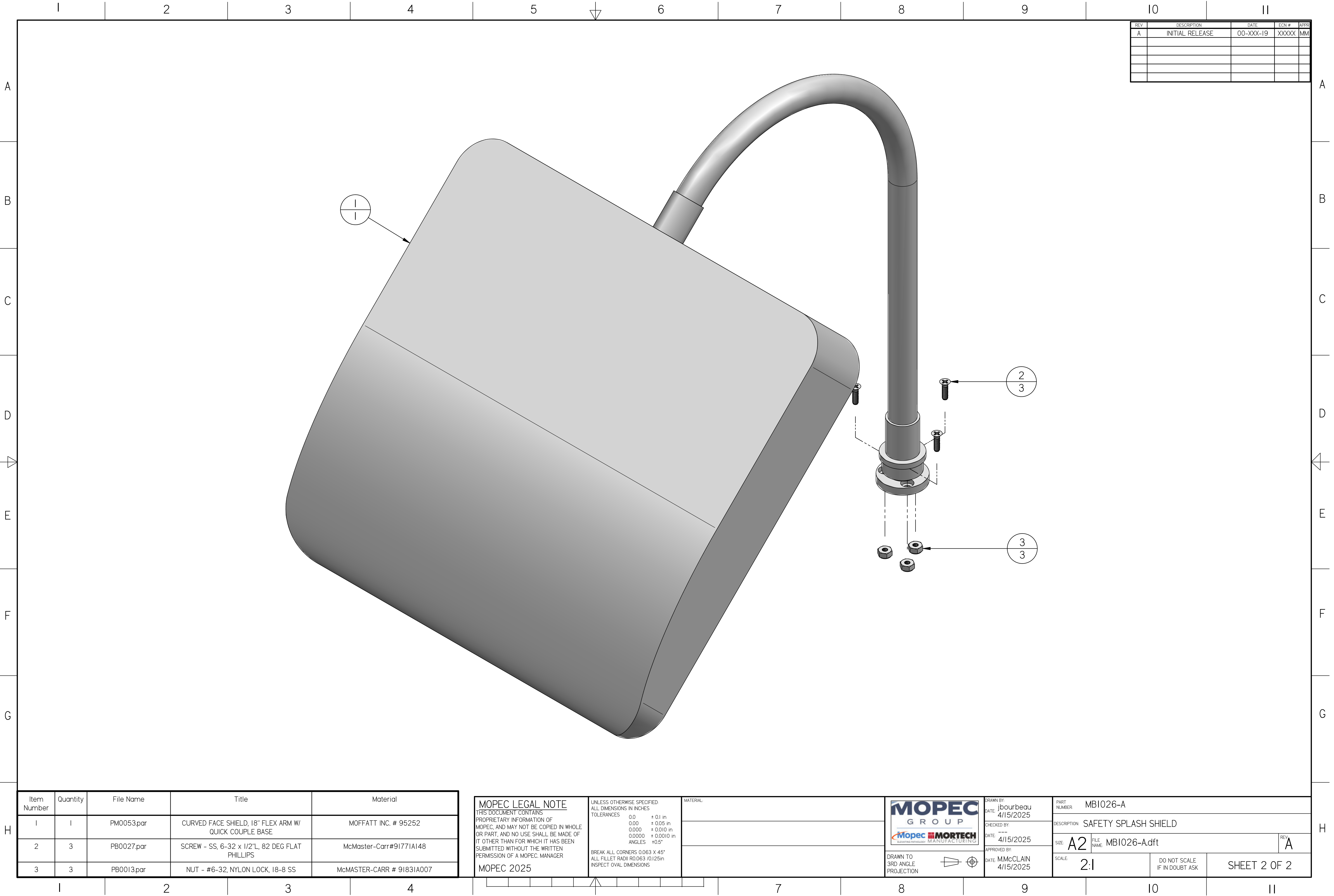
CHECKED BY: \_\_\_\_\_  
DATE: 4/15/2025

APPROVED BY: \_\_\_\_\_  
DATE: M.McCLAIN 4/15/2025

PART NUMBER: MBI026-A	
DESCRIPTION: SAFETY SPLASH SHIELD	
SIZE: A2	FILE NAME: MBI026-A.dft
SCALE: 1:2	DO NOT SCALE IF IN DOUBT ASK
SHEET 1 OF 2	

REV: A

\*MB1026-A.dft\*



REV	DESCRIPTION	DATE	ECN #	APPR
A	INITIAL RELEASE	00-XXX-19	XXXXX	MM

Item Number	Quantity	File Name	Title	Material
1	1	PM0053.par	CURVED FACE SHIELD, 18" FLEX ARM W/ QUICK COUPLE BASE	MOFFATT INC. # 95252
2	3	PB0027.par	SCREW - SS, 6-32 x 1/2"L, 82 DEG FLAT PHILLIPS	McMaster-Carr#91771A148
3	3	PB0013.par	NUT - #6-32, NYLON LOCK, 18-8 SS	McMASTER-CARR # 91831A007

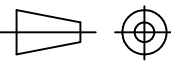
**MOPEC LEGAL NOTE**  
THIS DOCUMENT CONTAINS PROPRIETARY INFORMATION OF MOPEC, AND MAY NOT BE COPIED IN WHOLE OR PART, AND NO USE SHALL BE MADE OF IT OTHER THAN FOR WHICH IT HAS BEEN SUBMITTED WITHOUT THE WRITTEN PERMISSION OF A MOPEC MANAGER  
MOPEC 2025

UNLESS OTHERWISE SPECIFIED:  
ALL DIMENSIONS IN INCHES  
TOLERANCES  
0.0 ± 0.1 in  
0.00 ± 0.05 in  
0.000 ± 0.010 in  
0.0000 ± 0.0010 in  
ANGLES ±0.5°  
BREAK ALL CORNERS 0.063 X 45°  
ALL FILLET RADII R0.063 /0.125in  
INSPECT OVAL DIMENSIONS

MATERIAL



DRAWN TO 3RD ANGLE PROJECTION



DRAWN BY: jbourbeau  
DATE: 4/15/2025  
CHECKED BY: ---  
DATE: 4/15/2025  
APPROVED BY: M.McCLAIN  
DATE: 4/15/2025

PART NUMBER: MBI026-A	REV: A
DESCRIPTION: SAFETY SPLASH SHIELD	
SIZE: A2	FILE NAME: MBI026-A.dft
SCALE: 2:1	DO NOT SCALE IF IN DOUBT ASK
	SHEET 2 OF 2

\*MB1026-A.dft\*