

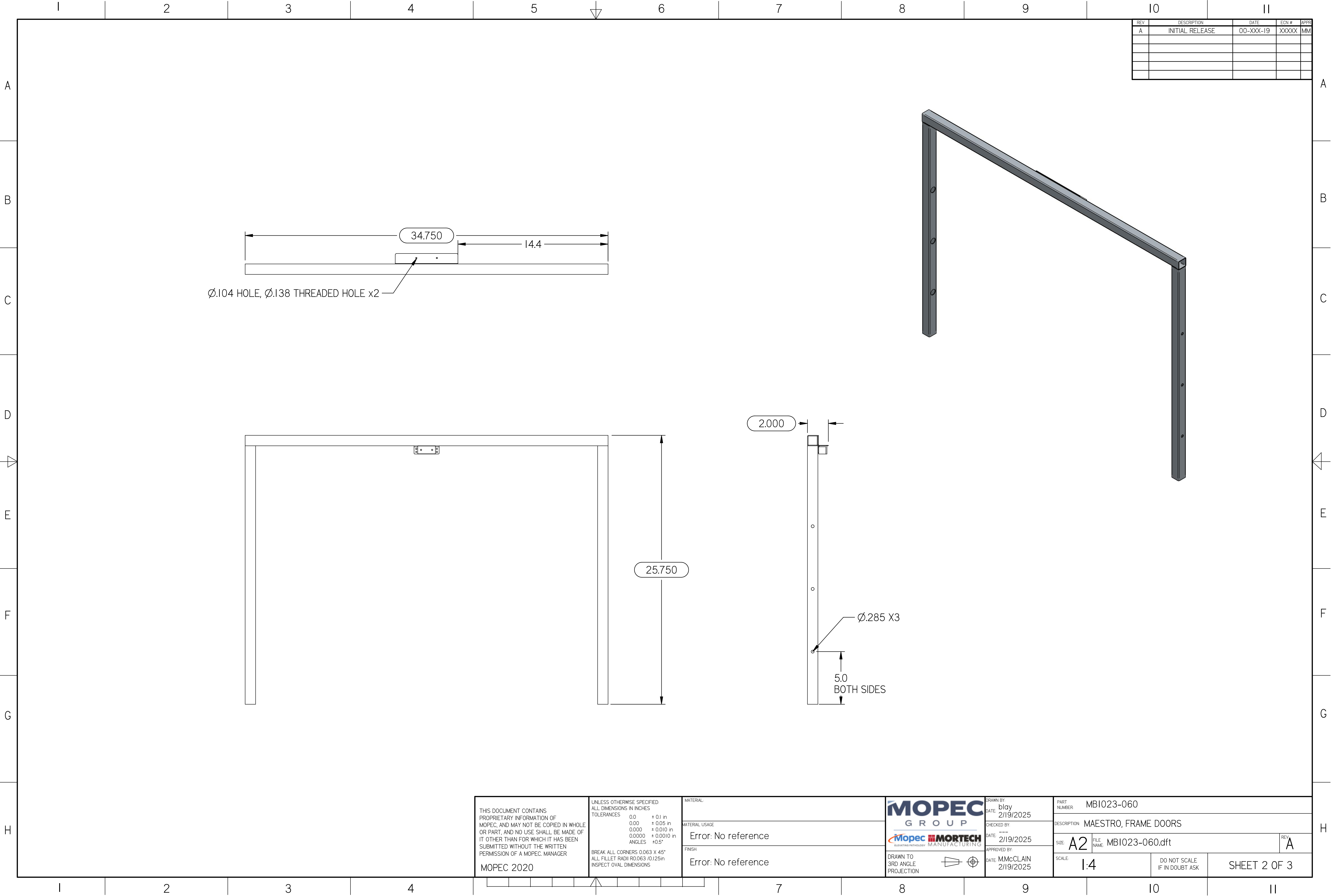



REV	DESCRIPTION	DATE	ECN #	APPR
A	INITIAL RELEASE	00-XXX-19	XXXXX	MM

THIS DOCUMENT CONTAINS PROPRIETARY INFORMATION OF MOPEC, AND MAY NOT BE COPIED IN WHOLE OR PART, AND NO USE SHALL BE MADE OF IT OTHER THAN FOR WHICH IT HAS BEEN SUBMITTED WITHOUT THE WRITTEN PERMISSION OF A MOPEC. MANAGER MOPEC 2020	UNLESS OTHERWISE SPECIFIED: ALL DIMENSIONS IN INCHES TOLERANCES 0.0 ± 0.1 in 0.00 ± 0.05 in 0.000 ± 0.010 in 0.0000 ± 0.0010 in ANGLES ±0.5° BREAK ALL CORNERS 0.063 X 45° ALL FILLET RADII R0.063 /0.125in INSPECT OVAL DIMENSIONS	MATERIAL MATERIAL USAGE Error: No reference FINISH Error: No reference	<div>MOPEC GROUP</div> <div>MOPEC MORTTECH SUSTAINING TECHNOLOGY MANUFACTURING</div> <div>DRAWN TO 3RD ANGLE PROJECTION</div> <div></div>	DRAWN BY: blay DATE: 2/19/2025	PART NUMBER: MBI023-060		
				CHECKED BY:	DESCRIPTION: MAESTRO, FRAME DOORS		
				DATE: 2/19/2025	SIZE: A2	FILE NAME: MBI023-060.dft	REV: A
				APPROVED BY:	SCALE: 1:4	DO NOT SCALE IF IN DOUBT ASK	SHEET 1 OF 3
DATE: M.McCLAIN 2/19/2025							

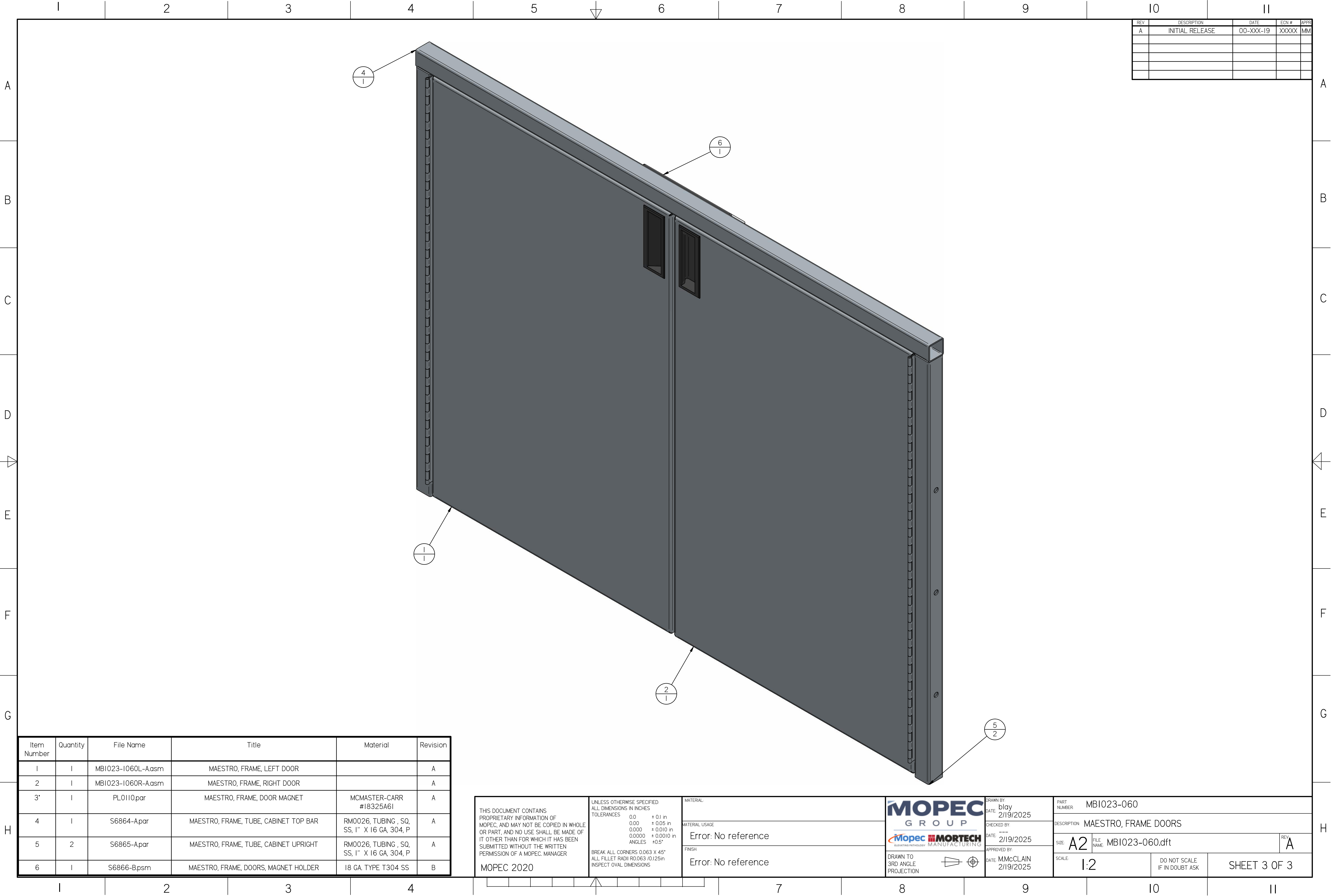
MB1023-060.dft



REV	DESCRIPTION	DATE	ECN #	APPR
A	INITIAL RELEASE	00-XXX-19	XXXXX	MM

THIS DOCUMENT CONTAINS PROPRIETARY INFORMATION OF MOPEC, AND MAY NOT BE COPIED IN WHOLE OR PART, AND NO USE SHALL BE MADE OF IT OTHER THAN FOR WHICH IT HAS BEEN SUBMITTED WITHOUT THE WRITTEN PERMISSION OF A MOPEC. MANAGER MOPEC 2020	UNLESS OTHERWISE SPECIFIED: ALL DIMENSIONS IN INCHES TOLERANCES 0.0 ± 0.1 in 0.00 ± 0.05 in 0.000 ± 0.010 in 0.0000 ± 0.0010 in ANGLES ±0.5° BREAK ALL CORNERS 0.063 X 45° ALL FILLET RADII R0.063 /0.125in INSPECT OVAL DIMENSIONS	MATERIAL	DRAWN BY: blay DATE: 2/19/2025		PART NUMBER: MBI023-060		
		MATERIAL USAGE	CHECKED BY:		DESCRIPTION: MAESTRO, FRAME DOORS		
		Error: No reference	DATE: 2/19/2025		SIZE: A2	FILE NAME: MBI023-060.dft	REV: A
		FINISH	APPROVED BY:		SCALE: 1:4	DO NOT SCALE IF IN DOUBT ASK	SHEET 2 OF 3
Error: No reference		DRAWN TO 3RD ANGLE PROJECTION					

MB1023-060.dft



REV	DESCRIPTION	DATE	ECN #	APPR
A	INITIAL RELEASE	00-XXX-19	XXXXX	MM

Item Number	Quantity	File Name	Title	Material	Revision
1	1	MB1023-1060L-Aasm	MAESTRO, FRAME, LEFT DOOR		A
2	1	MB1023-1060R-Aasm	MAESTRO, FRAME, RIGHT DOOR		A
3	1	PL0110.par	MAESTRO, FRAME, DOOR MAGNET	MCMMASTER-CARR #18325A6I	A
4	1	S6864-Apar	MAESTRO, FRAME, TUBE, CABINET TOP BAR	RM0026, TUBING , SQ, SS, 1" X 16 GA, 304, P	A
5	2	S6865-Apar	MAESTRO, FRAME, TUBE, CABINET UPRIGHT	RM0026, TUBING , SQ, SS, 1" X 16 GA, 304, P	A
6	1	S6866-Bpsm	MAESTRO, FRAME, DOORS, MAGNET HOLDER	18 GA. TYPE T304 SS	B

THIS DOCUMENT CONTAINS PROPRIETARY INFORMATION OF MOPEC, AND MAY NOT BE COPIED IN WHOLE OR PART, AND NO USE SHALL BE MADE OF IT OTHER THAN FOR WHICH IT HAS BEEN SUBMITTED WITHOUT THE WRITTEN PERMISSION OF A MOPEC. MANAGER

MOPEC 2020

UNLESS OTHERWISE SPECIFIED:
ALL DIMENSIONS IN INCHES

TOLERANCES	0.0	± 0.1 in
	0.00	± 0.05 in
	0.000	± 0.010 in
	0.0000	± 0.0010 in
ANGLES		±0.5°

BREAK ALL CORNERS 0.063 X 45°
ALL FILLET RADII R0.063 /0.125in
INSPECT OVAL DIMENSIONS

MATERIAL:

MATERIAL USAGE:

Error: No reference

FINISH:

Error: No reference

MOPEC GROUP

Mopec MORTECH

ADVANCED TECHNOLOGY MANUFACTURING

DRAWN TO 3RD ANGLE PROJECTION

DRAWN BY: blay
DATE: 2/19/2025

CHECKED BY: ---
DATE: 2/19/2025

APPROVED BY: M.McCLAIN
DATE: 2/19/2025

PART NUMBER: MB1023-060

DESCRIPTION: MAESTRO, FRAME DOORS

SIZE: A2

FILE NAME: MB1023-060.dft

SCALE: 1:2

DO NOT SCALE IF IN DOUBT ASK

SHEET 3 OF 3

MB1023-060.dft