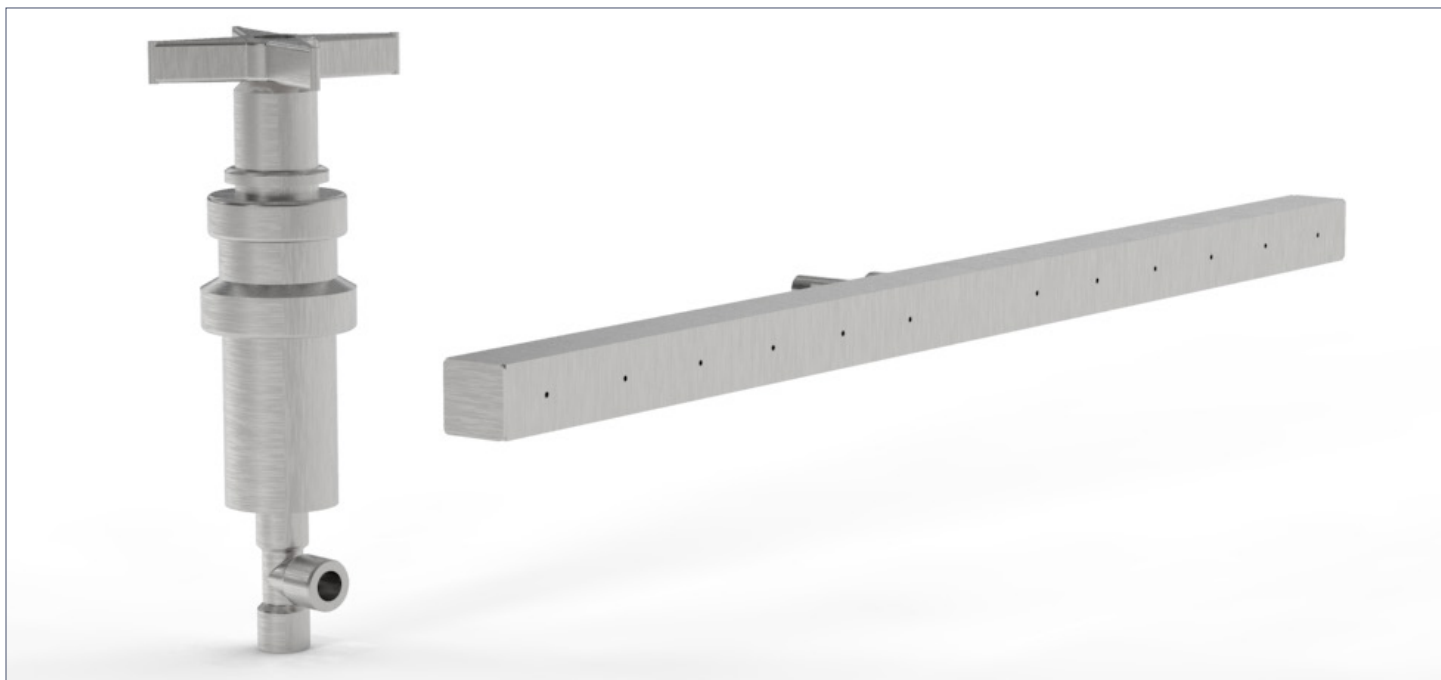


# Maestro End Rinse



## SPECIFICATIONS

### Construction

- Designed to be a rinse bar for the work surface of your grossing station.
- Mounts on the end of the work surface opposite the sink to help wash the surface down.
- Includes a rinse bar, mixing valve for temperature control, and a flow control valve.

### Materials

- Rinse Bar: 304 stainless steel construction with #4 finish
- Fixtures and Hardware: chrome-plated brass

### Dimensions

- Rinse Bar: 16.3" L x .75" W x .75" H

### Compatibility

- Compatible with all Maestro and Maestro Encore grossing stations

## NOTE:

- This option should be ordered at the time of purchase. Installation after delivery can be difficult.
- Water pressure and spray pattern may vary based on facility.

**MOPEC**  
GROUP

**Mopec**  
ELEVATING PATHOLOGY

**MORTECH**  
MANUFACTURING

[www.mopecgroup.com](http://www.mopecgroup.com)

800.362.8491

800 Tech Row, Madison Heights, MI